

### 3.0 PROPOSED TRAILS

#### 3.1 Rerouted Hinds Lake Trail

Figure 3 shows the original Hinds Lake trail section that was submitted for EA review in 2015. In consultation with various regulators, RILOT reviewed this routing and determined that their business operations could function with portions rerouted to occur on less wetland and more mineral dominated terrain (Figures 4 and 5).

Based on advice from the WRMD, RILOT endeavored to reroute this trail such that wetland areas and water features visible on a 1:50,000 scale topographic map were reduced (Figure 4 and Table 3). The number of water features noted in Table 3 are likely greater than what will be found on the ground as the 1:50,000 topographic map generalizes wetland areas, are somewhat dated and may not reflect all localized non-wetland areas. Where possible and appropriate, RILOT will follow mitigations outlined in this EPP for proposed trail sections that intersect water features.

Where a wetland area could not be avoided, RILOT endeavored to route the trail around the edges of the wetland area. Please note that the new routing was completed using satellite imagery and RILOT is committed to modifying sections of the rerouted trails should ground truthing indicate a better route with more mineral type substrates. RILOT is also aware that permit(s) from the WRMD will be required prior to any construction related activity. RILOT is confident that specific details relative to exact stream and wetland crossing locations can be provided once ground truthing allows for more precise data collection

**Table 3: Coordinates of Water Features that Intersect Rerouted Hinds Lake Trail**

<b>Number</b>	<b>Coordinates</b>	
WF1	509540.74	5415504.12
WF2	509566.20	5415513.03
WF3	509591.20	5415521.78
WF4	509095.15	5415379.22
WF5	510381.83	5416315.97
WF6	510233.37	5416835.56
WF7	510281.92	5417570.50
WF8	510695.76	5417905.84
WF9	511192.08	5418289.68

Notes: NAD83 UTM Zone 21 North. Water features visible on a 1:50,000 topo map.

**Government of Newfoundland & Labrador  
Department of Municipal & Intergovernmental Affairs**



**NOTE TO USERS**

The information on this map was compiled from land surveys registered in the Crown Lands Registry.

Since the Registry does not contain information on all land ownership within the Province, the information depicted cannot be considered complete.

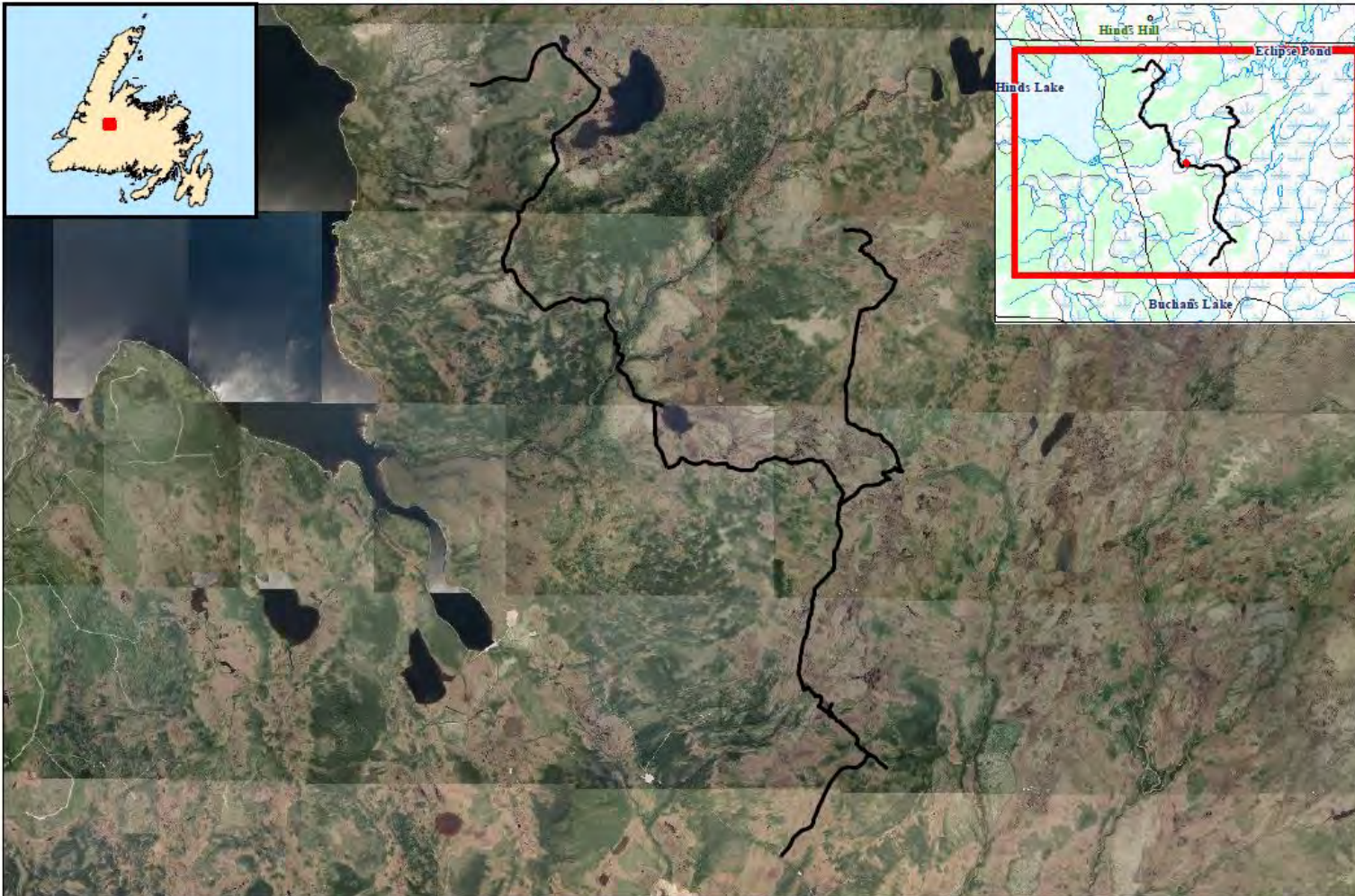
The boundary lines shown are intended to be used as an index to land titles issued by the Crown. The accuracy of the plot is not sufficient for measurement purposes and does not guarantee title.

Users finding any errors or omissions on this map sheet are asked to contact the Crown Titles Mapping Section, Hawley Building Higgins Lane, St. John's Newfoundland.

Users finding error or omissions can contact the Crown Titles Mapping Section by telephone at 729-2051. Some titles may not be plotted due to Crown Lands volumes missing from the Crown Lands registry or not plotted due to insufficient survey information.

The User hereby indemnifies and saves harmless the Minister, his officers, employees and agents from and against all claims, demands, liabilities, actions or cause of actions alleging any loss, injury, damages and matter (including claims or demands for any violation of copyright or intellectual property) arising out of any missing or incomplete Crown Land files, and the Minister, his or her officers, employees and agents shall not be liable for any loss of profits or contracts or any other loss of any kind as a result.

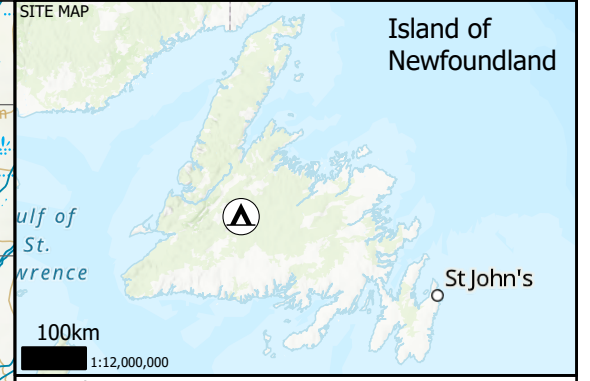
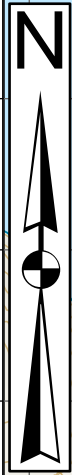
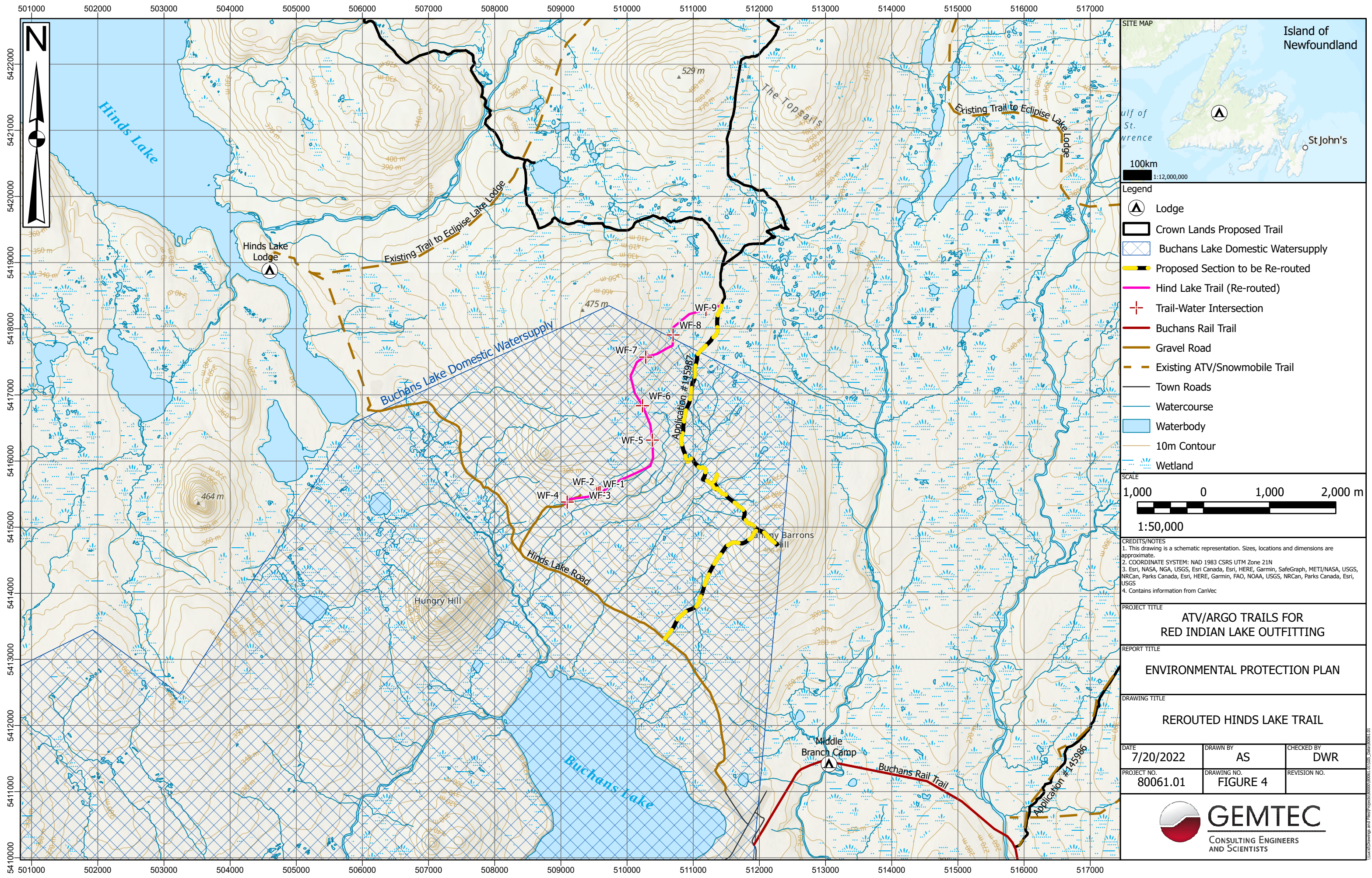
For inquiries please contact a Regional Lands Office.  
 Corner Brook - 637-2387  
 Gander - 255-1400  
 Goose Bay - 836-2488  
 St. John's - 723-2654  
 Clarenville - 466-4074  
 Grand Falls-Windsor 292-4267



Crown Lands Application 145987 - Hinds Lake

0 2.5 5 Kilometers

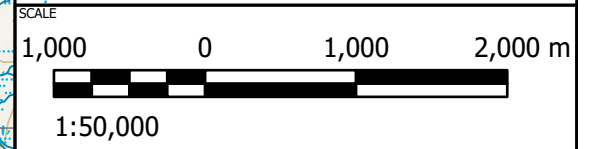
**Figure 3: Original Hinds Lake Trail - Proposed 2015**



100km  
1:12,000,000

Legend

- Lodge
- Crown Lands Proposed Trail
- Buchans Lake Domestic Watersupply
- Proposed Section to be Re-routed
- Hind Lake Trail (Re-routed)
- Trail-Water Intersection
- Buchans Rail Trail
- Gravel Road
- Existing ATV/Snowmobile Trail
- Town Roads
- Watercourse
- Waterbody
- 10m Contour
- Wetland



CREDITS/NOTES

- This drawing is a schematic representation. Sizes, locations and dimensions are approximate.
- COORDINATE SYSTEM: NAD 1983 CSRS UTM Zone 21N
- Esri, NASA, NGA, USGS, Esri Canada, Esri, HERE, Garmin, SafeGraph, METI/NASA, USGS, NRCAN, Parks Canada, Esri, HERE, Garmin, FAO, NOAA, USGS, NRCAN, Parks Canada, Esri, USGS
- Contains information from CanVec

PROJECT TITLE

**ATV/ARGO TRAILS FOR  
RED INDIAN LAKE OUTFITTING**

REPORT TITLE

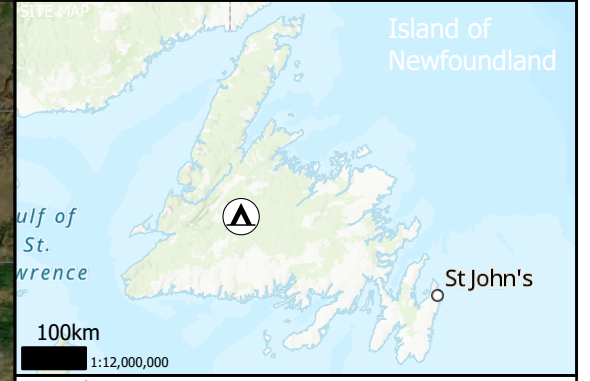
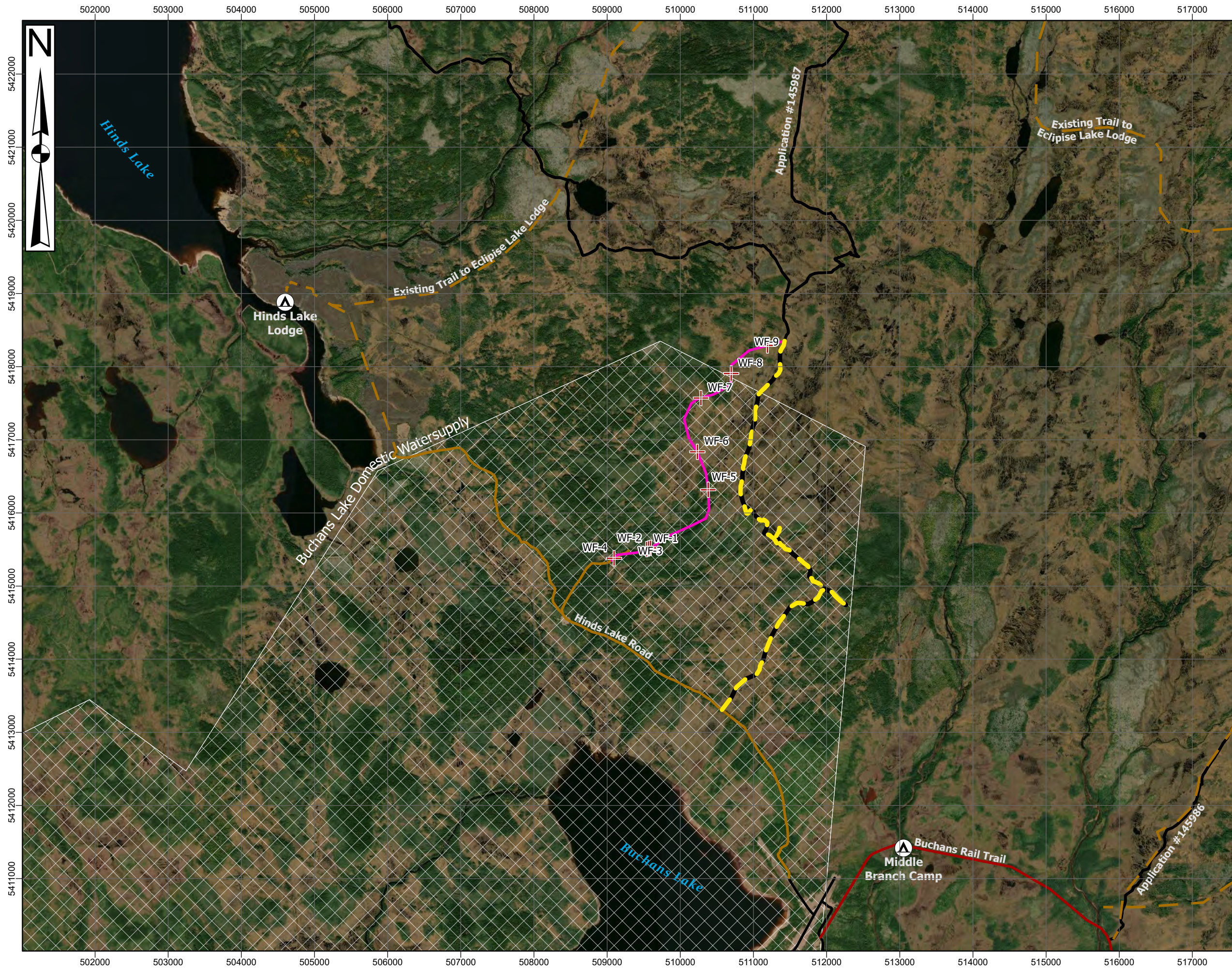
**ENVIRONMENTAL PROTECTION PLAN**

DRAWING TITLE

**REROUTED HINDS LAKE TRAIL**

DATE 7/20/2022	DRAWN BY AS	CHECKED BY DWR
PROJECT NO. 80061.01	DRAWING NO. FIGURE 4	REVISION NO.



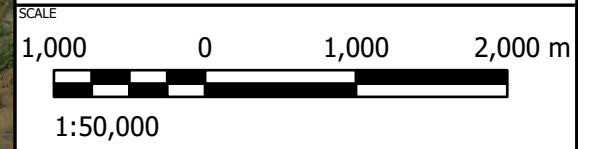


**Legend**

- Lodge
- Crown Lands Proposed Trail
- Proposed Section to be Re-routed
- Hind Lake Trail (Re-routed)
- Trail-Water Intersection

**Existing Road/Trail**

- Buchans Rail Trail
- Gravel Road
- Existing ATV/Snowmobile Trail
- Town Roads



**CREDITS/NOTES**

1. This drawing is a schematic representation. Sizes, locations and dimensions are approximate.
2. COORDINATE SYSTEM: NAD 1983 CSRS UTM Zone 21N
3. Esri, HERE, Garmin, FAO, NOAA, USGS, NRCAN, Parks Canada, Esri, USGS, Maxar
4. Contains information from CanVec

**PROJECT TITLE**

**ATV/ARGO TRAILS FOR  
RED INDIAN LAKE OUTFITTING**

**REPORT TITLE**

**ENVIRONMENTAL PROTECTION PLAN**

**DRAWING TITLE**

**REROUTED HINDS LAKE TRAIL**

<b>DATE</b> 7/20/2022	<b>DRAWN BY</b> AS	<b>CHECKED BY</b> DWR
<b>PROJECT NO.</b> 80061.01	<b>DRAWING NO.</b> FIGURE 5	<b>REVISION NO.</b>

**GEMTEC**  
CONSULTING ENGINEERS  
AND SCIENTISTS

LucidDrawings and FileProjects\80061\0051\ATV\_Summary.dwg