

3.2 Rerouted Saddler Lake Trail

Figure 6 shows the original Saddler Lake trail section that was submitted for EA review in 2015. In consultation with various regulators, RILOT reviewed this routing and determined that their business operations could function with portions rerouted to occur on less wetland and more mineral dominated terrain (Figures 7 and 8).

Based on advice from the WRMD, RILOT endeavored to reroute this trail such that wetland areas and water features visible on a 1:50,000 scale topographic map were reduced (Figure 7 and Table 4). The number of water features noted in Table 4 are likely greater than what will be found on the ground as the 1:50,000 topographic map generalizes wetland areas, are somewhat dated and may not reflect all localized non-wetland areas. Where possible and appropriate, RILOT will follow mitigations outlined in this EPP for proposed trail sections that intersect water features. Please note the dead-end trail is an area of prime hunting. RILOT travels this area and back tracks once the trail terminates.

Where a wetland area could not be avoided, RILOT routed the trail around the edges of the wetland area to the extent possible. Please note that the new routing was completed using satellite imagery and RILOT is committed to modifying sections of the rerouted trails should ground truthing indicate a better route with more mineral soil substrates. RILOT is also aware that permit(s) from the WRMD will be required prior to any construction related activity. RILOT is confident that specific details relative to exact stream and wetland crossing locations can be provided once ground truthing allows for more precise data collection

Table 4: Coordinates of Water Features that Intersect Rerouted Saddler Lake Trail

Feature	Coordinates	
WF1	492101.19	5395833.74
WF2	484008.25	5394866.71
WF3	484049.45	5394962.17
WF4	484010.33	5394653.89
WF5	492361.53	5396617.53
WF6	491672.14	5396511.92
WF7	493930.70	5399337.68
WF8	492358.44	5396669.98
WF9	491089.20	5396875.77
WF10	492507.09	5397313.38
WF11	492833.04	5397812.33
WF12	489093.88	5396555.26
WF13	489213.01	5396684.21
WF14	489252.78	5396718.79
WF15	489753.58	5396778.19

3.0 PROPOSED TRAILS

3.1 Rerouted Hinds Lake Trail

Figure 3 shows the original Hinds Lake trail section that was submitted for EA review in 2015. In consultation with various regulators, RILOT reviewed this routing and determined that their business operations could function with portions rerouted to occur on less wetland and more mineral dominated terrain (Figures 4 and 5).

Based on advice from the WRMD, RILOT endeavored to reroute this trail such that wetland areas and water features visible on a 1:50,000 scale topographic map were reduced (Figure 4 and Table 3). The number of water features noted in Table 3 are likely greater than what will be found on the ground as the 1:50,000 topographic map generalizes wetland areas, are somewhat dated and may not reflect all localized non-wetland areas. Where possible and appropriate, RILOT will follow mitigations outlined in this EPP for proposed trail sections that intersect water features.

Where a wetland area could not be avoided, RILOT endeavored to route the trail around the edges of the wetland area. Please note that the new routing was completed using satellite imagery and RILOT is committed to modifying sections of the rerouted trails should ground truthing indicate a better route with more mineral type substrates. RILOT is also aware that permit(s) from the WRMD will be required prior to any construction related activity. RILOT is confident that specific details relative to exact stream and wetland crossing locations can be provided once ground truthing allows for more precise data collection

Table 3: Coordinates of Water Features that Intersect Rerouted Hinds Lake Trail

Number	Coordinates	
WF1	509540.74	5415504.12
WF2	509566.20	5415513.03
WF3	509591.20	5415521.78
WF4	509095.15	5415379.22
WF5	510381.83	5416315.97
WF6	510233.37	5416835.56
WF7	510281.92	5417570.50
WF8	510695.76	5417905.84
WF9	511192.08	5418289.68

Notes: NAD83 UTM Zone 21 North. Water features visible on a 1:50,000 topo map.

**Government of Newfoundland & Labrador
Department of Municipal & Intergovernmental Affairs**



NOTE TO USERS

The information on this map was compiled from land surveys registered in the Crown Lands Registry.

Since the Registry does not contain information on all land ownership within the Province, the information depicted cannot be considered complete.

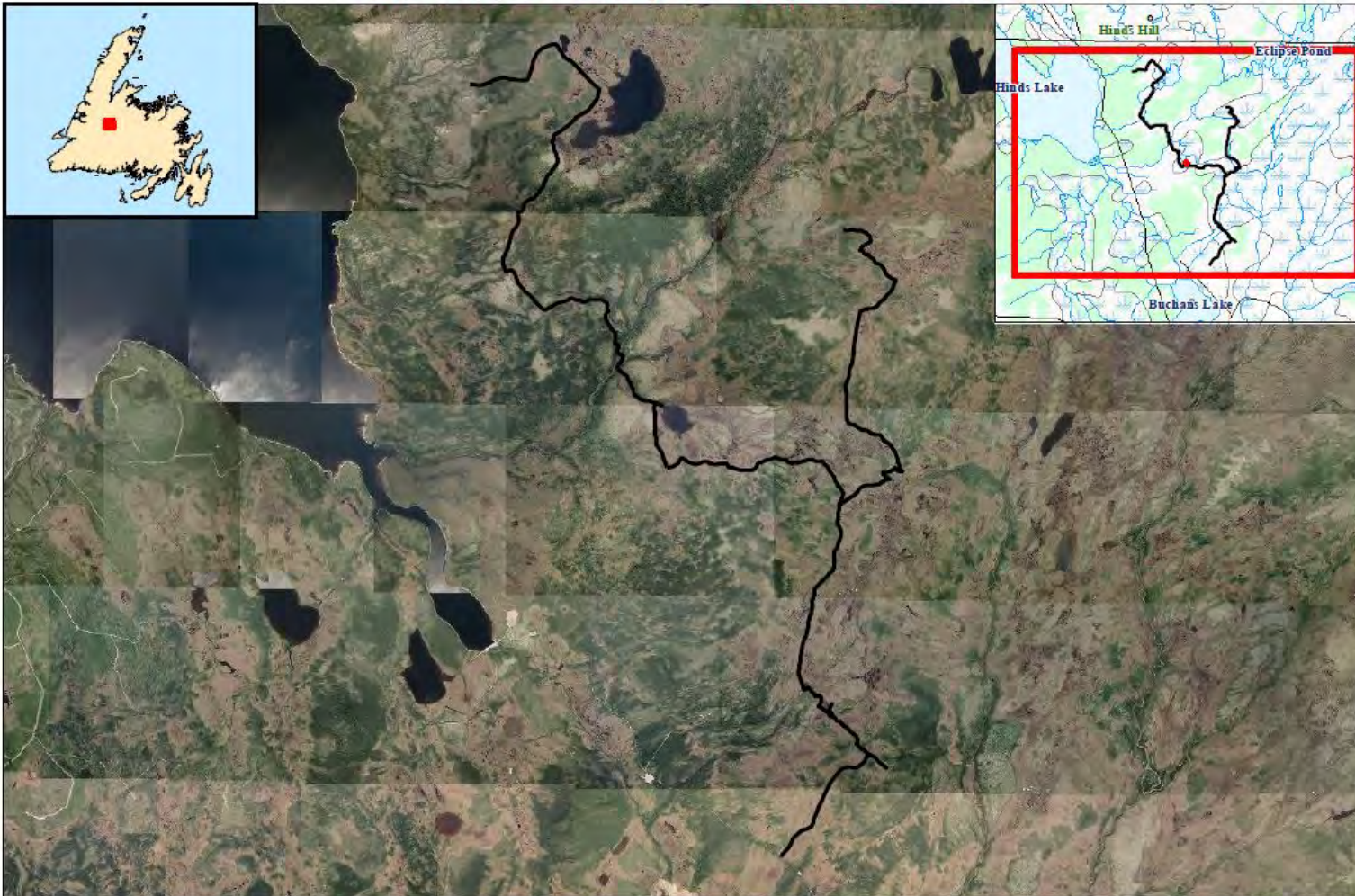
The boundary lines shown are intended to be used as an index to land titles issued by the Crown. The accuracy of the plot is not sufficient for measurement purposes and does not guarantee title.

Users finding any errors or omissions on this map sheet are asked to contact the Crown Titles Mapping Section, Hawley Building Higgins Line, St. John's Newfoundland.

Users finding error or omissions can contact the Crown Titles Mapping Section by telephone at 729-2051. Some titles may not be plotted due to Crown Lands volumes missing from the Crown Lands registry or not plotted due to insufficient survey information.

The User hereby indemnifies and saves harmless the Minister, his officers, employees and agents from and against all claims, demands, liabilities, actions or cause of actions alleging any loss, injury, damages and matter (including claims or demands for any violation of copyright or intellectual property) arising out of any missing or incomplete Crown Land files, and the Minister, his or her officers, employees and agents shall not be liable for any loss of profits or contracts or any other loss of any kind as a result.

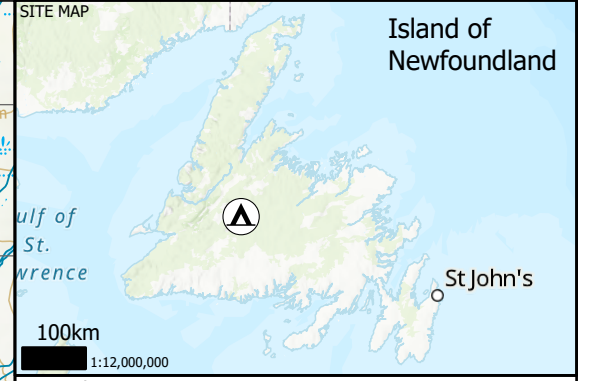
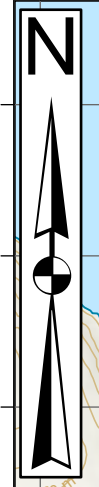
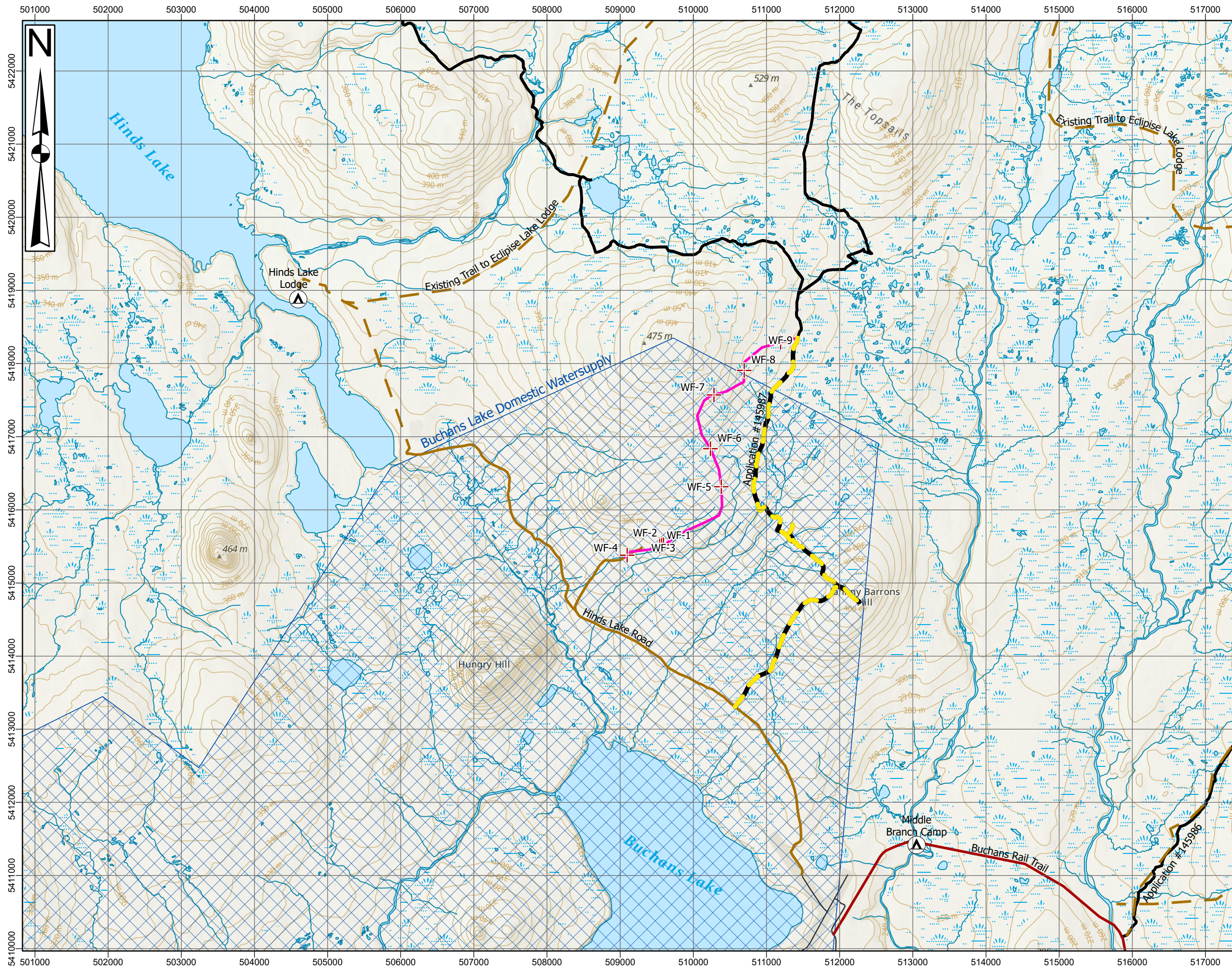
For inquiries please contact a Regional Lands Office.
 Corner Brook - 637-2387
 Gander - 255-1400
 Goose Bay - 836-2488
 St. John's - 723-2654
 Clarenville - 468-4074
 Grand Falls-Windsor 292-4267



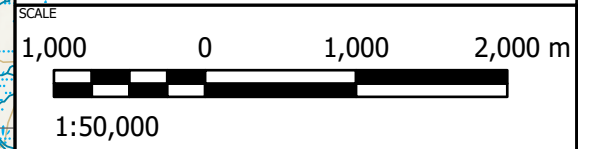
Crown Lands Application 145987 - Hinds Lake

0 2.5 5 Kilometers

Figure 3: Original Hinds Lake Trail - Proposed 2015



- Legend**
- Lodge
 - Crown Lands Proposed Trail
 - Buchans Lake Domestic Watersupply
 - Proposed Section to be Re-routed
 - Hind Lake Trail (Re-routed)
 - Trail-Water Intersection
 - Buchans Rail Trail
 - Gravel Road
 - Existing ATV/Snowmobile Trail
 - Town Roads
 - Watercourse
 - Waterbody
 - 10m Contour
 - Wetland



CREDITS/NOTES

1. This drawing is a schematic representation. Sizes, locations and dimensions are approximate.
2. COORDINATE SYSTEM: NAD 1983 CSRS UTM Zone 21N
3. Esri, NASA, NGA, USGS, Esri Canada, Esri, HERE, Garmin, SafeGraph, METI/NASA, USGS, NRCAN, Parks Canada, Esri, HERE, Garmin, FAO, NOAA, USGS, NRCAN, Parks Canada, Esri, USGS
4. Contains information from CanVec

PROJECT TITLE

ATV/ARGO TRAILS FOR RED INDIAN LAKE OUTFITTING

REPORT TITLE

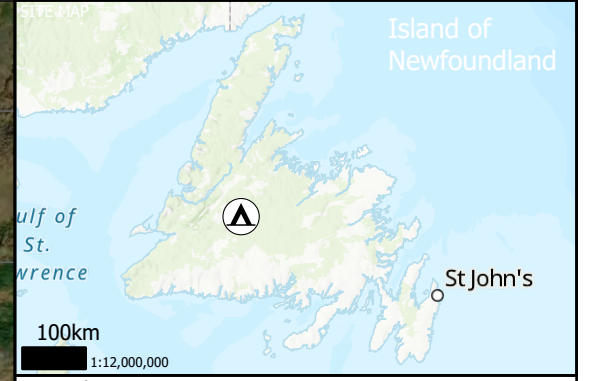
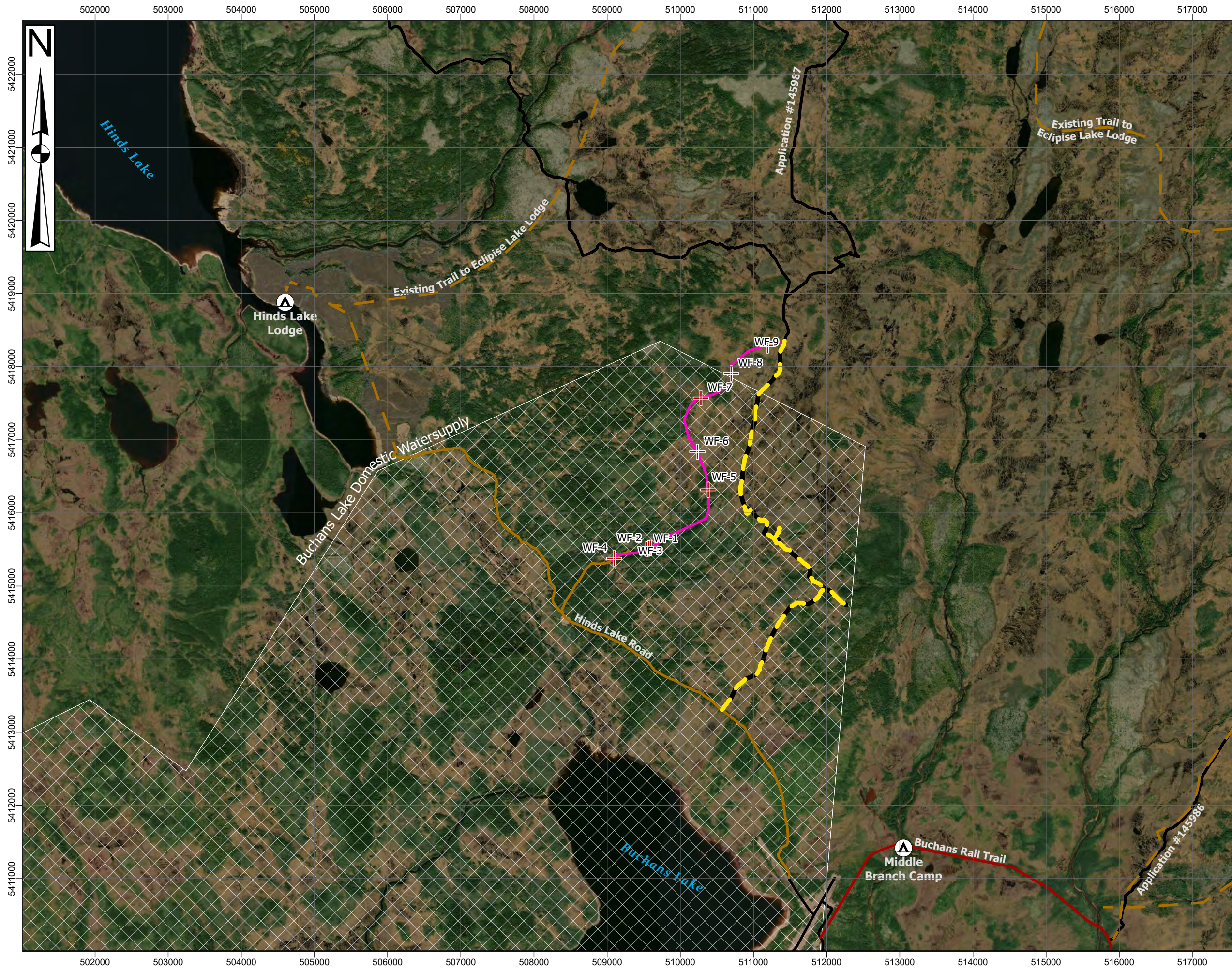
ENVIRONMENTAL PROTECTION PLAN

DRAWING TITLE

REROUTED HINDS LAKE TRAIL

DATE 7/20/2022	DRAWN BY AS	CHECKED BY DWR
PROJECT NO. 80061.01	DRAWING NO. FIGURE 4	REVISION NO.



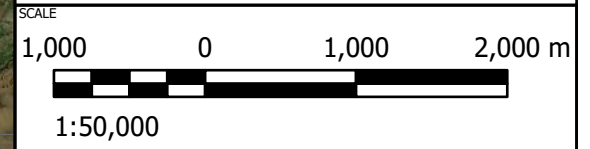


Legend

- Lodge
- Crown Lands Proposed Trail
- Proposed Section to be Re-routed
- Hind Lake Trail (Re-routed)
- Trail-Water Intersection

Existing Road/Trail

- Buchans Rail Trail
- Gravel Road
- Existing ATV/Snowmobile Trail
- Town Roads



CREDITS/NOTES

1. This drawing is a schematic representation. Sizes, locations and dimensions are approximate.
2. COORDINATE SYSTEM: NAD 1983 CSRS UTM Zone 21N
3. Esri, HERE, Garmin, FAO, NOAA, USGS, NRCAN, Parks Canada, Esri, USGS, Maxar
4. Contains information from CanVec

PROJECT TITLE

**ATV/ARGO TRAILS FOR
RED INDIAN LAKE OUTFITTING**

REPORT TITLE

ENVIRONMENTAL PROTECTION PLAN

DRAWING TITLE

REROUTED HINDS LAKE TRAIL

DATE 7/20/2022	DRAWN BY AS	CHECKED BY DWR
PROJECT NO. 80061.01	DRAWING NO. FIGURE 5	REVISION NO.

GEMTEC
CONSULTING ENGINEERS
AND SCIENTISTS

LocalDrawings and FileProjects\80061\0051\ATV_Summary.dwg

Feature	Coordinates	
WF16	493657.04	5400863.43
WF17	487092.39	5395508.03
WF18	487988.87	5396053.45
WF19	488630.31	5396326.40
WF20	492115.02	5395710.46
WF21	490482.88	5395037.77
WF22	489357.26	5395293.60
WF23	483135.31	5395498.00
WF24	485179.13	5394811.75
WF25	485995.96	5395009.35
WF26	487661.20	5395894.69
WF27	487974.51	5395247.41
WF28	492038.08	5396438.68
WF29	490490.78	5396861.18
WF30	493701.16	5400812.47
WF31	492402.65	5395707.21

Notes: NAD83 UTM Zone 21 North. Water features visible on a 1:50,000 topo map.