

**Government of Newfoundland & Labrador
Department of Municipal & Intergovernmental Affairs**



NOTE TO USERS

The information on this map was compiled from land surveys registered in the Crown Lands Registry.

Since the Registry does not contain information on all land ownership within the Province, the information depicted cannot be considered complete.

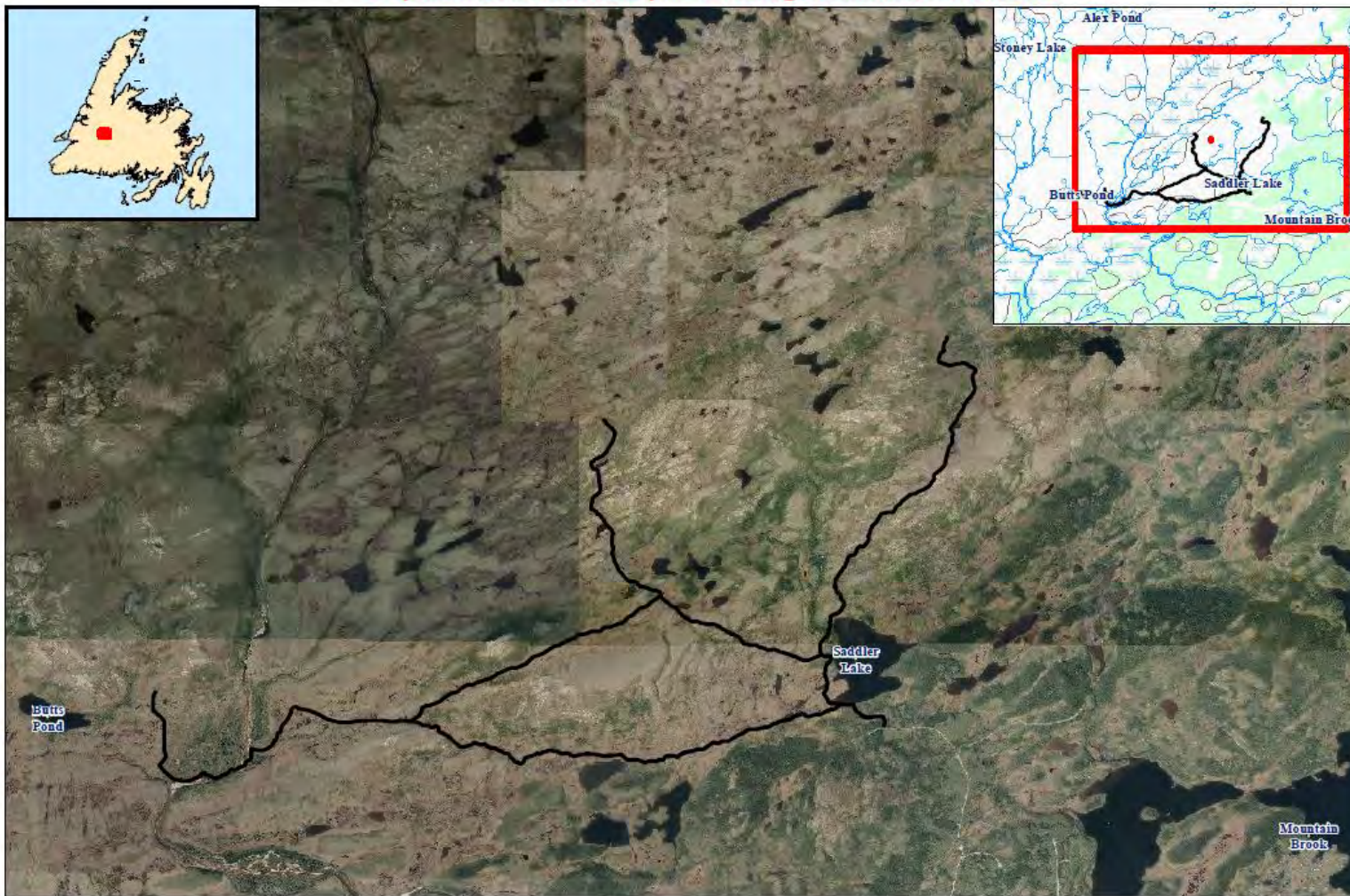
The boundary lines shown are intended to be used as an index to land files issued by the Crown. The accuracy of the plot is not sufficient for measurement purposes and does not guarantee title.

Users finding any errors or omissions on this map sheet are asked to contact the Crown Titles Mapping Section, Howley Building, Higgins Line, St. John's, Newfoundland.

Users finding errors or omissions can contact the Crown Titles Mapping Section by telephone at 729-0051. Some titles may not be plotted due to Crown Lands volumes missing from the Crown Lands registry or not plotted due to insufficient survey information.

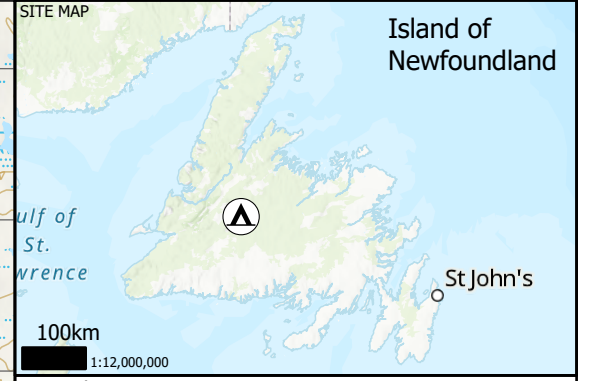
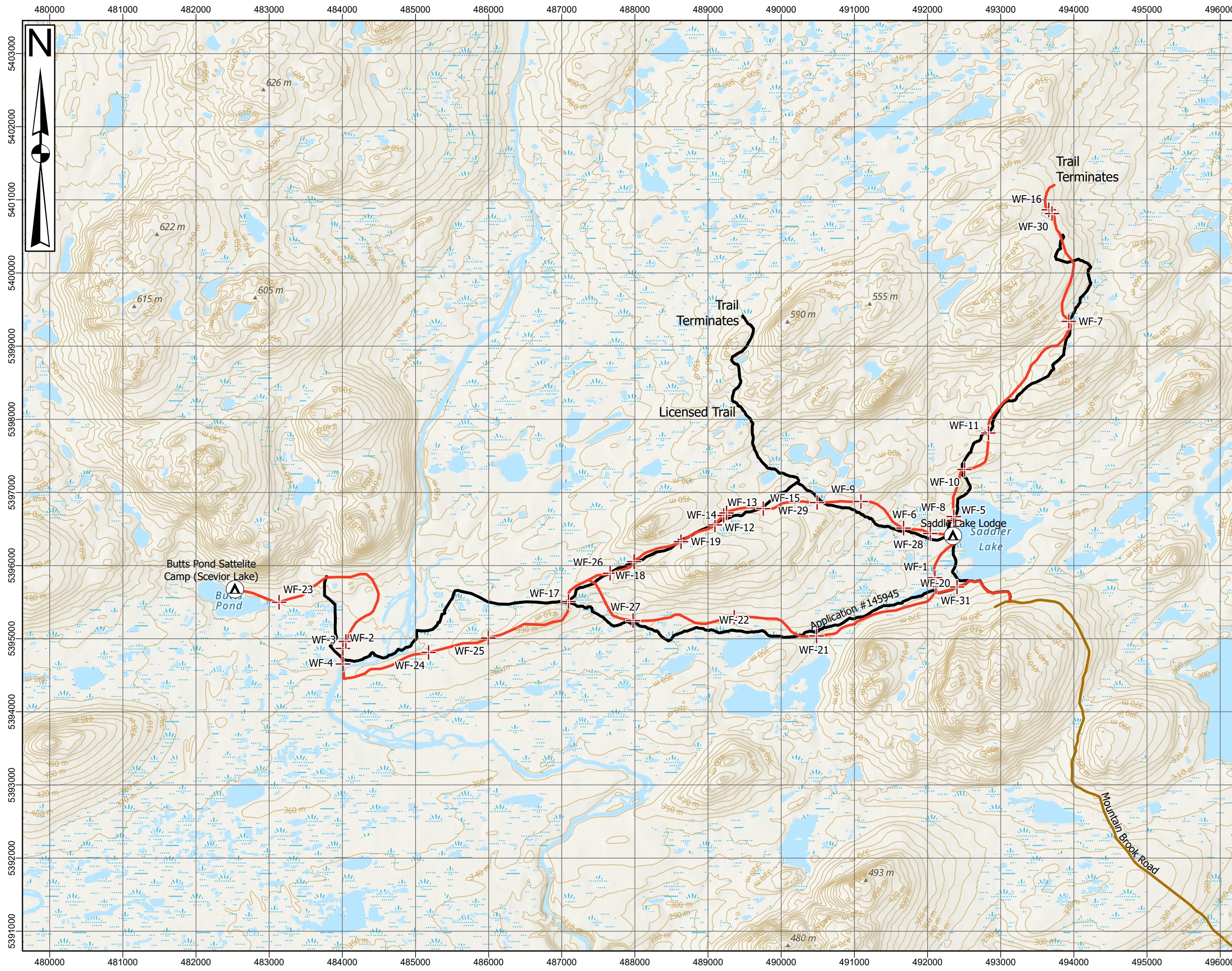
The User hereby indemnifies and saves harmless the Minister, his officers, employees and agents from and against all claims, demands, liabilities, actions or causes of actions alleging any loss, injury, damages and costs (including claims or demands for any violation of copyright or intellectual property) arising out of any mining or non-mining Crown Land files, and the Minister, his or her officers, employees and agents shall not be liable for any loss of profits or contracts or any other loss of any kind as a result.

For inquiries please contact a Regional Lands Office.
 Corner Brook - 537-2587
 Gander - 256-1400
 Goose Bay - 836-2488
 St. John's - 729-2654
 Clarenville - 466-4074
 Grand Falls-Windsor 292-4267



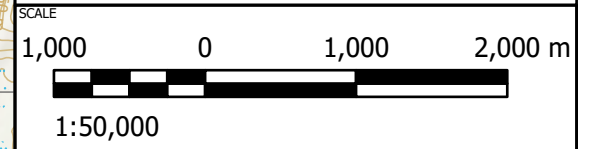
Crown Lands Application 145945 - Saddler Lake 0 2.5 5 Kilometers

Figure 6: Original Saddler Lake Trail- Proposed 2015



Legend

- Lodge
- Crown Lands Proposed Trail
- Saddle Lake Trail (Re-routed)
- Trail-Water Intersection
- Gravel Road
- 10m Contour
- Wetland



CREDITS/NOTES

- This drawing is a schematic representation. Sizes, locations and dimensions are approximate.
- COORDINATE SYSTEM: NAD 1983 CSRS UTM Zone 21N
- Esri, NASA, NGA, USGS, Esri Canada, Esri, HERE, Garmin, SafeGraph, METI/NASA, USGS, NRCAN, Parks Canada, Esri, HERE, Garmin, FAO, NOAA, USGS, NRCAN, Parks Canada, Esri, USGS
- Contains information from CanVec

PROJECT TITLE

ATV/ARGO TRAILS FOR
RED INDIAN LAKE OUTFITTING

REPORT TITLE

ENVIRONMENTAL PROTECTION PLAN

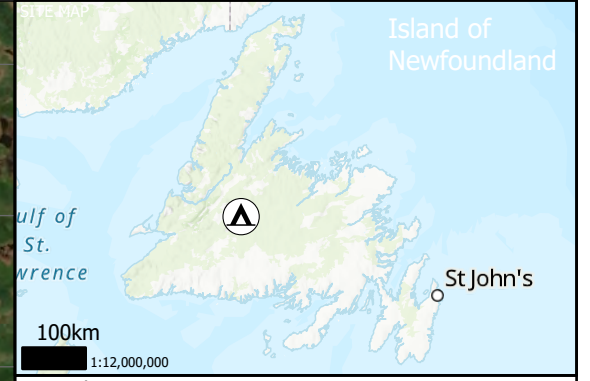
DRAWING TITLE

REROUTED SADDLER LAKE TRAIL

DATE 7/20/2022	DRAWN BY AS	CHECKED BY DWR
PROJECT NO. 80061.01	DRAWING NO. FIGURE 7	REVISION NO.



LocalDrawings and FileProjects\80061\80061_01\Figure 7.dwg

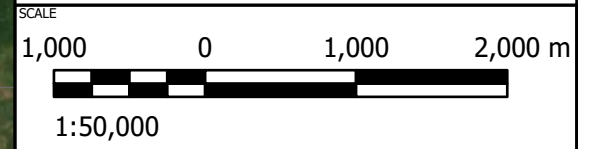


Legend

- Lodge
- Crown Lands Proposed Trail
- Saddler Lake Trail (Re-routed)
- Trail-Water Intersection

Existing Road/Trail

- Gravel Road



CREDITS/NOTES

1. This drawing is a schematic representation. Sizes, locations and dimensions are approximate.
2. COORDINATE SYSTEM: NAD 1983 CSRS UTM Zone 21N
3. Earthstar Geographics, Esri, HERE, Garmin, FAO, NOAA, USGS, NRCan, Parks Canada, Esri, USGS
4. Contains information from CanVec

PROJECT TITLE

**ATV/ARGO TRAILS FOR
RED INDIAN LAKE OUTFITTING**

REPORT TITLE

ENVIRONMENTAL PROTECTION PLAN

DRAWING TITLE

REROUTED SADDLER LAKE TRAIL

DATE 7/20/2022	DRAWN BY AS	CHECKED BY DWR
PROJECT NO. 80061.01	DRAWING NO. FIGURE 8	REVISION NO.

GEMTEC
CONSULTING ENGINEERS
AND SCIENTISTS

L:\Local Drawings and Files\Projects\80061\80061_01\GIS_Data\80061_01

3.3 Mary March River Trail

Figure 9 shows the original Mary March River trail section that was submitted for EA review in 2015. In consultation with various regulators, RILOT understands there is an existing trail (CL Lease 127210) in this area, and it is sufficient to carry out their business operations (Figure 10 and 11). RILOT will use this existing trail, therefore no new trail or reroute is necessary. RILOT will obtain any necessary permits, to allow use of this trail.