

**Government of Newfoundland & Labrador
Department of Municipal & Intergovernmental Affairs**



NOTE TO USERS

The information on this map was compiled from land surveys registered in the Crown Lands Registry.

Since the Registry does not contain information on all land ownership within the Province, the information depicted cannot be considered complete.

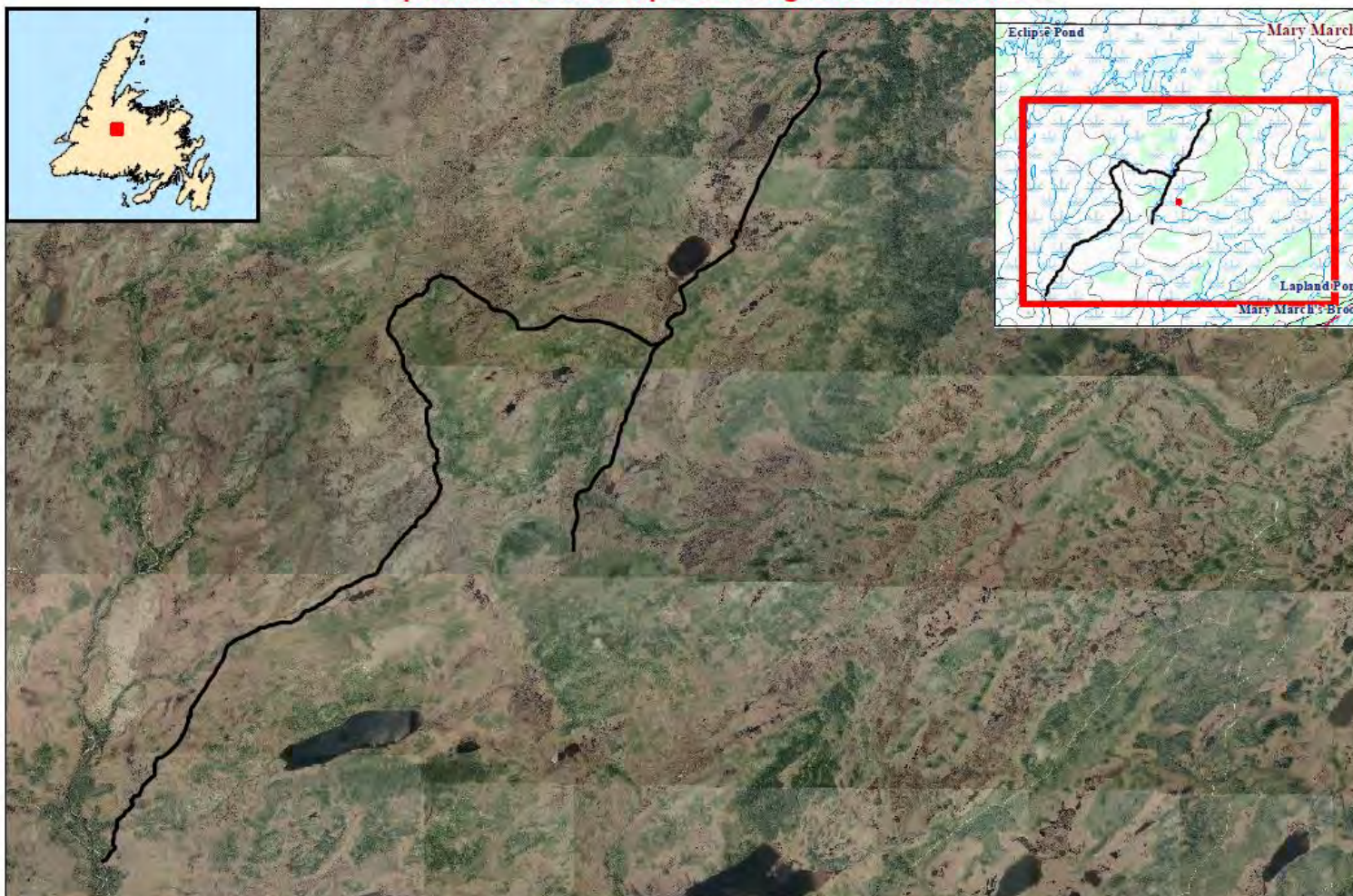
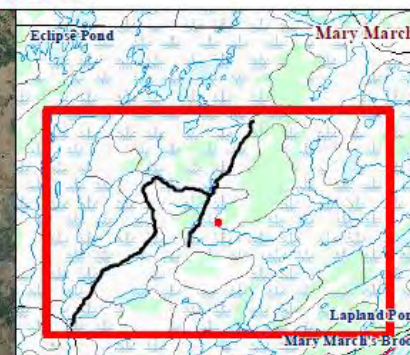
The boundary lines shown are intended to be used as an index to land titles issued by the Crown. The accuracy of the plot is not sufficient for measurement purposes and does not guarantee title.

Users finding any errors or omissions on the map sheet are asked to contact the Crown Titles Mapping Section, Hawley Building, Higgins Lane, St. John's, Newfoundland.

Users finding error or omissions can contact the Crown Titles Mapping Section by telephone at 725-0061. Some titles may not be plotted due to Crown Lands volumes missing from the Crown Lands registry or not plotted due to insufficient survey information.

The User hereby indemnifies and saves harmless the Minister, its officers, employees and agents from and against all claims, demands, liabilities, actions or causes of actions alleging any loss, injury, damages and matter (including claims or demands for any violation of copyright or intellectual property) arising out of any misreading or incomplete Crown Land files, and the Minister, its or her officers, employees and agents shall not be liable for any loss of profits, or contracts or any other loss of any kind as a result.

For inquiries please contact a Regional Lands Office:
 Corner Brook - 637-2387
 Gander - 256-1400
 Goose Bay - 896-2488
 St. John's - 725-2654
 Clarenville - 466-4074
 Grand Falls-Windsor 252-4267



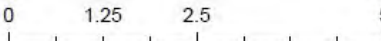
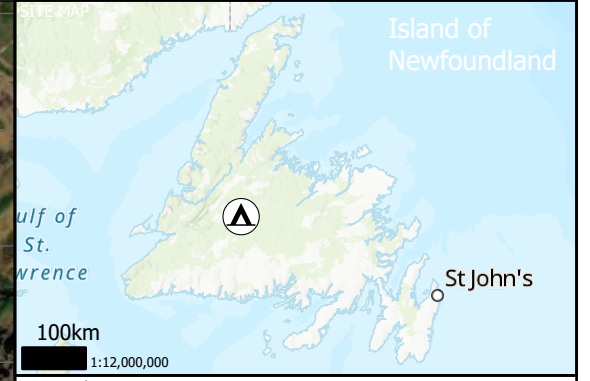
Crown Lands Application 145986 - Mary March River 

Figure 9: Original Mary March River Trail - Proposed 2015



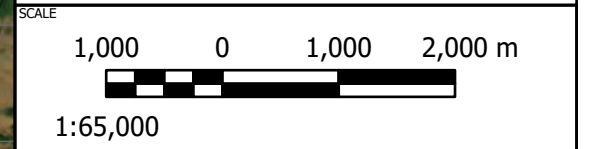
Legend

- Lodge

Client Data

Existing Road/Trail

- Buchans Rail Trail
- Existing Trail (Crown Lands Lease 127210)
- Town Roads



CREDITS/NOTES

1. This drawing is a schematic representation. Sizes, locations and dimensions are approximate.
2. COORDINATE SYSTEM: NAD 1983 CSRS UTM Zone 21N
3. Esri, HERE, Garmin, FAO, NOAA, USGS, NRCAN, Parks Canada, Esri, USGS, Maxar
4. Contains information from CanVec

PROJECT TITLE

**ATV/ARGO TRAILS FOR
RED INDIAN LAKE OUTFITTING**

REPORT TITLE

ENVIRONMENTAL PROTECTION PLAN

DRAWING TITLE

MARY MARCH RIVER TRAIL

DATE 8/1/2022	DRAWN BY AS	CHECKED BY DWR
PROJECT NO. 80061.01	DRAWING NO. FIGURE 11	REVISION NO.

GEMTEC
CONSULTING ENGINEERS
AND SCIENTISTS

\\ced\drawings and files\projects\80061\08011\GIS_data\8061_01

3.4 Halfway Mountain / Skidder Brook Trail - CL 145970

RILOT reviewed this routing and determined that this trail is important from an economic standpoint to the operation of their outfitting business (Figure 12). RILOT was unable however to confidently reroute this trail using available satellite imagery. RILOT is however committed to changing the route of this trail such that wetland areas visible on a 1:50,000 scale topographic map are reduced where possible (Figures 13 and 14).

The number of water features noted in Table 5 are likely greater than what will be found on the ground as the 1:50,000 topographic map generalizes wetland areas, are somewhat dated and may not reflect all localized non-wetland areas. Where possible and appropriate, RILOT will follow mitigations outlined in this EPP for proposed trail sections that intersect water features. Please note the dead-end trail is an area of prime hunting. RILOT travels this area and back tracks once the trail terminates.

Where a wetland area cannot be avoided, RILOT will route the trail around the edges of the wetland area. RILOT is confident that onsite ground truthing will indicate a better route with more mineral type substrates. RILOT is also aware that permit(s) from the WRMD will be required prior to any construction related activity. RILOT is confident that specific details relative to exact stream and wetland crossing locations can be provided once ground truthing allows for more precise data collection.

Table 5: Coordinates of Water Features that Intersect Halfway Mountain/Skidder Brook Trail

Feature	Coordinates	
WF1	500637.30	5400129.47
WF2	497786.41	5399565.33
WF3	497029.22	5399311.91
WF4	496378.72	5398872.36
WF5	498023.49	5399721.82
WF6	498654.31	5400163.31
WF7	498314.05	5399909.83
WF8	501868.14	5400170.66
WF9	501489.86	5400122.27
WF10	497552.28	5399521.37
WF11	499354.25	5400503.10
WF12	499064.17	5400463.76
WF13	499772.78	5400188.72
WF14	500652.52	5398081.56
WF15	500636.66	5397771.63
WF16	501124.71	5399155.99
WF17	500956.03	5398905.79
WF18	504346.40	5401282.70
WF19	496760.14	5398948.15
WF20	496990.92	5399171.48
WF21	500859.04	5398654.37
WF22	503322.39	5401078.13

Feature	Coordinates	
WF23	504777.02	5401856.95

Notes: NAD83 UTM Zone 21 North. Water features visible on a 1:50,000 topo map.