

**Government of Newfoundland & Labrador  
Department of Municipal & Intergovernmental Affairs**



**NOTE TO USERS**

The information on this map was compiled from land surveys registered in the Crown Lands Registry.

Since the Registry does not contain information on all land ownership within the Province, the information depicted cannot be considered complete.

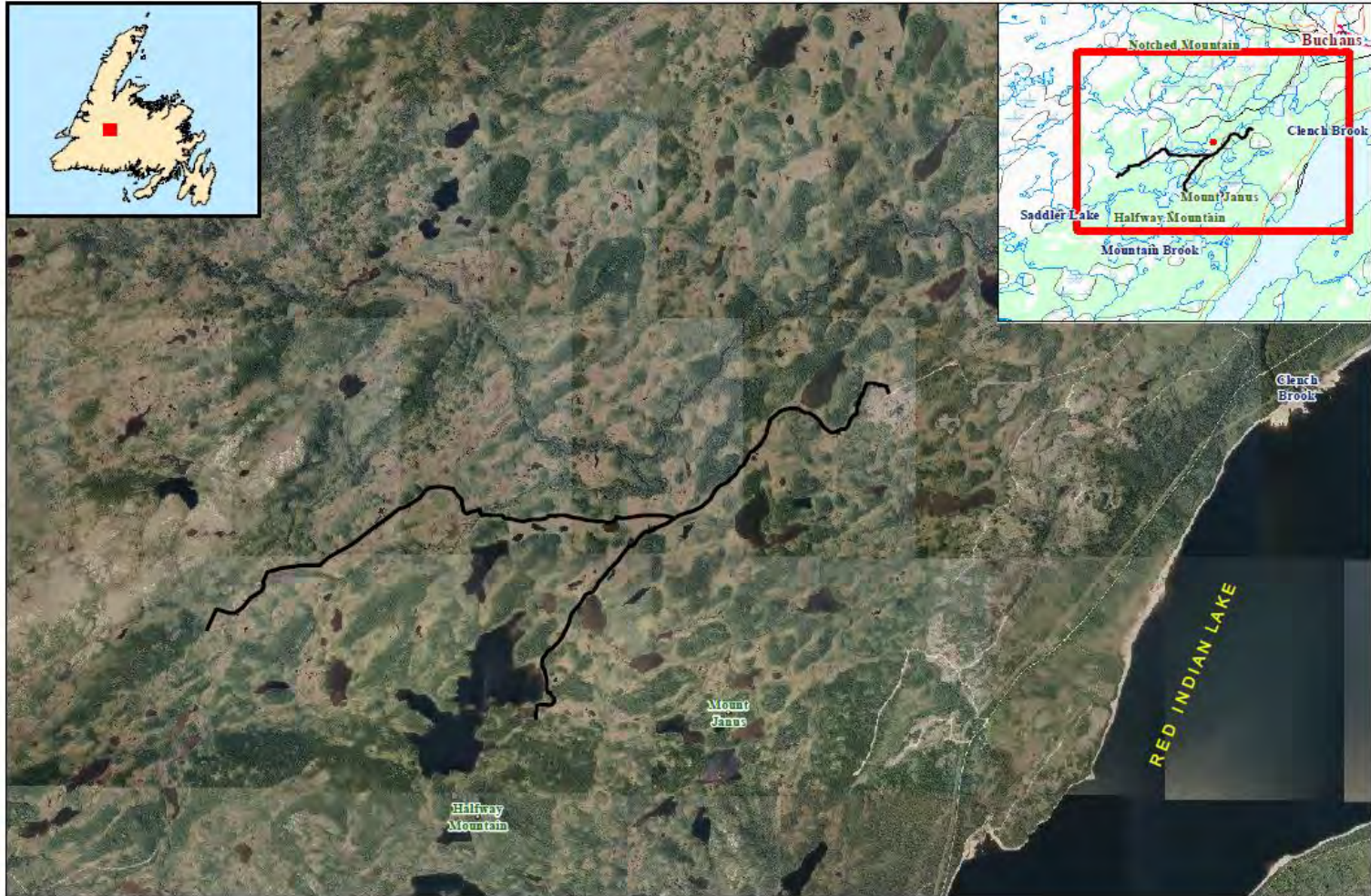
The boundary lines shown are intended to be used as an index to land titles issued by the Crown. The accuracy of the plot is not sufficient for measurement purposes and does not guarantee title.

Users finding any errors or omissions on the map sheet are asked to contact the Crown Titles Mapping Section, Honey Building, Highways Line - St. John's Newfoundland.

Users finding error or omissions can contact the Crown Titles Mapping Section by telephone at 726-0061. Some titles may not be plotted due to Crown Lands volumes missing from the Crown Lands registry or not plotted due to insufficient survey information.

The User hereby indemnifies and saves harmless the Minister, its officers, employees and agents from and against all claims, demands, liabilities, actions or cause of actions alleging any loss, injury, damages and matter (including claims or demands for any violation of copyright or intellectual property) arising out of any reliance on incomplete Crown Land files, and the Minister, its or her officers, employees and agents shall not be liable for any loss of profits or contracts or any other loss of any kind as a result.

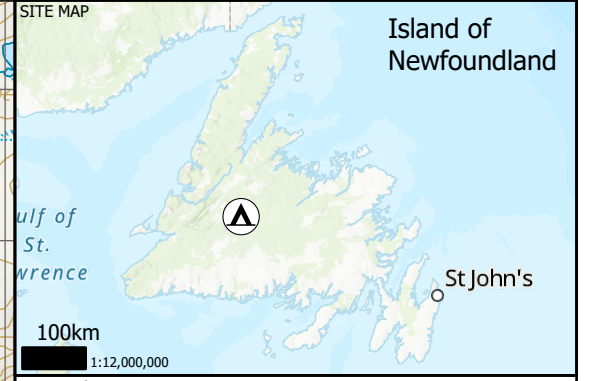
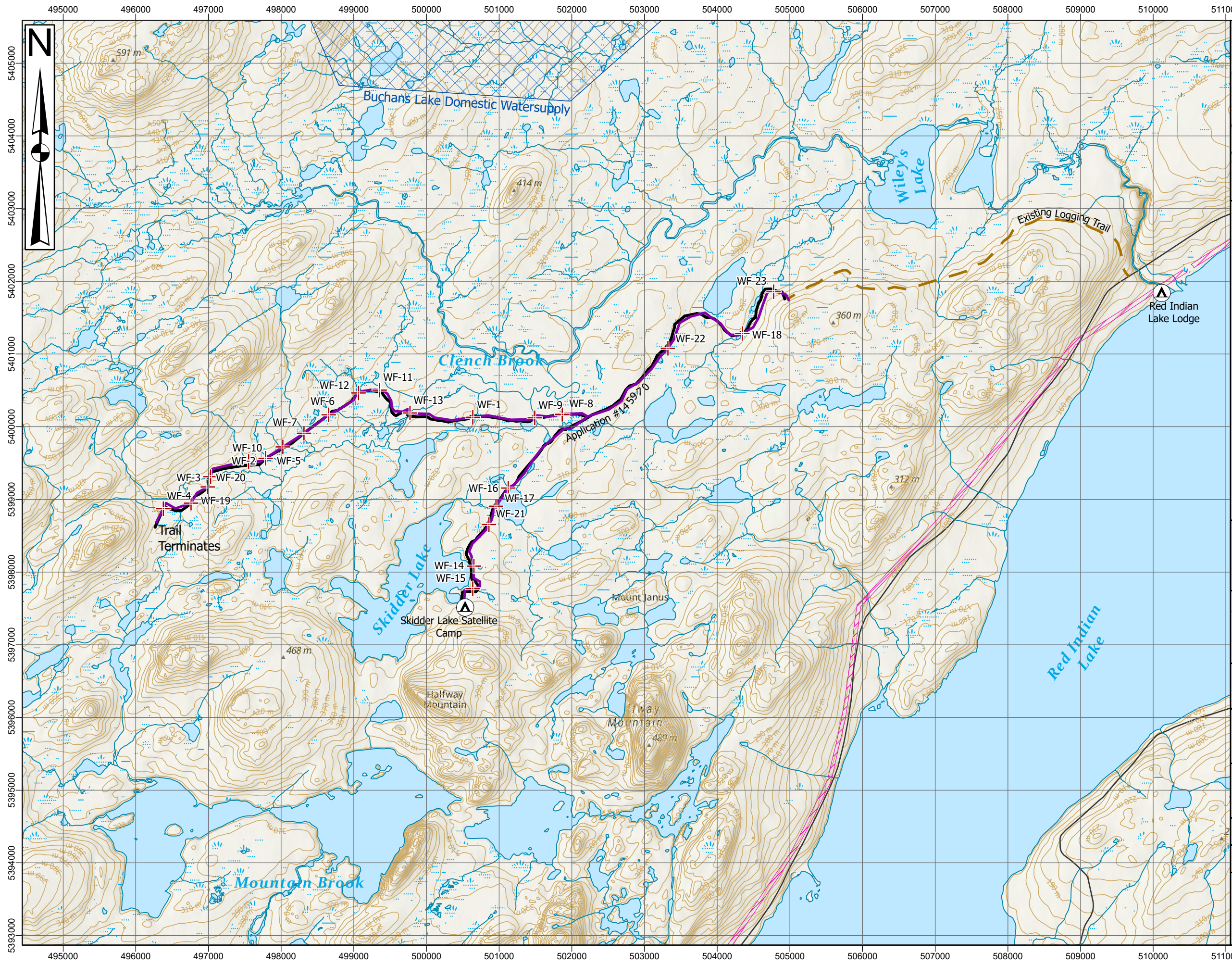
For inquiries please contact a Regional Lands Office.  
 Corner Brook - 637-2387  
 Gander - 256-1400  
 Goose Bay - 896-2488  
 St. John's - 729-2654  
 Clarendville - 466-4074  
 Grand Falls-Windsor 292-4267



Crown Lands Application 145970 - Halfway Mountain / Skidder Brook

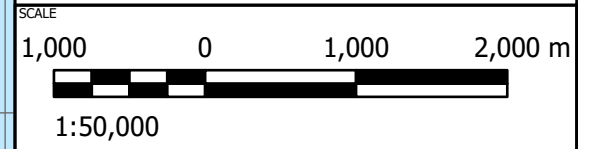
0 1.25 2.5 5 Kilometers

**Figure 12: Original Halfway Mountain / Skidder Brook Trail - Proposed 2015**



**Legend**

- Lodge
- Crown Lands Proposed Trail
- Halfway Mountain / Skidder Brook
- Trail-Water Intersection
- ATV/Snowmobile Trail
- Town Roads
- Transmission Line
- Watercourse
- Waterbody
- 10m Contour
- Wetland



**CREDITS/NOTES**

1. This drawing is a schematic representation. Sizes, locations and dimensions are approximate.
2. COORDINATE SYSTEM: NAD 1983 CSRS UTM Zone 21N
3. Esri, NASA, NGA, USGS, Esri Canada, Esri, HERE, Garmin, SafeGraph, METI/NASA, USGS, NRCAN, Parks Canada, Esri, HERE, Garmin, FAO, NOAA, USGS, NRCAN, Parks Canada, Esri, USGS
4. Contains information from CanVec

**PROJECT TITLE**

**ATV/ARGO TRAILS FOR  
RED INDIAN LAKE OUTFITTING**

**REPORT TITLE**

**ENVIRONMENTAL PROTECTION PLAN**

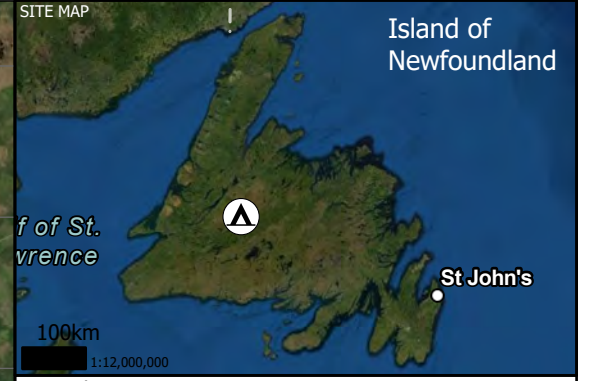
**DRAWING TITLE**

**REROUTED HALFWAY MOUNTAIN -  
SKIDDER BROOK TRAIL**

DATE <b>5/5/2022</b>	DRAWN BY <b>AS</b>	CHECKED BY <b>DWR</b>
PROJECT NO. <b>80061.01</b>	DRAWING NO. <b>FIGURE 13</b>	REVISION NO.



Local Drawings and Files Projects\80061\80061\_013.dwg, Date: 05/05/2022

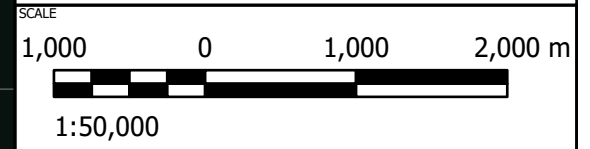


**Legend**

- Lodge
- Crown Lands Proposed Trail
- Halfway Mountain / Skidder Brook
- Trail-Water Intersection

**Existing Road/Trail**

- Gravel Road
- ATV/Snowmobile Trail
- Town Roads
- Transmission Line



**CREDITS/NOTES**

1. This drawing is a schematic representation. Sizes, locations and dimensions are approximate.
2. COORDINATE SYSTEM: NAD 1983 CSRS UTM Zone 21N
3. Earthstar Geographics, Esri, HERE, Garmin, FAO, NOAA, USGS, NRCAN, Parks Canada, Maxar
4. Contains information from CanVec

**PROJECT TITLE**

ATV/ARGO TRAILS FOR  
RED INDIAN LAKE OUTFITTING

**REPORT TITLE**

ENVIRONMENTAL PROTECTION PLAN

**DRAWING TITLE**

REROUTED HALFWAY MOUNTAIN -  
SKIDDER BROOK TRAIL

<b>DATE</b> 5/5/2022	<b>DRAWN BY</b> AS	<b>CHECKED BY</b> DWR
<b>PROJECT NO.</b> 80061.01	<b>DRAWING NO.</b> FIGURE 14	<b>REVISION NO.</b>



L:\CD\Drawings and Files\Projects\80061\001\ATV\_Sk\_Brook.dwg