

### 3.5 Alex Pond Trail - CL 145971

RILOT reviewed this routing and determined that this trail is important from an economic standpoint to the operation of their outfitting business (Figure 15). RILOT was unable however to confidently reroute this trail using available satellite imagery. RILOT is committed however to changing the route of this trail such that wetland areas visible on a 1:50,000 scale topographic map are reduced where possible (Figures 16 and 17).

The number of water features noted in Table 6 are likely greater than what will be found on the ground as the 1:50,000 topographic map generalizes wetland areas, are somewhat dated and do not reflect all localized non-wetland areas. Where possible and appropriate, RILOT will follow mitigations outlined in this EPP for proposed trail sections that intersect water features.

Where a wetland area cannot be avoided, RILOT will route the trail around the edges of the wetland area. RILOT is confident that onsite ground truthing will indicate a better route with more mineral type substrates. RILOT is also aware that permit(s) from the WRMD will be required prior to any construction related activity. RILOT is confident that specific details relative to exact stream and wetland crossing locations can be provided once ground truthing allows for more precise data collection.

**Table 6: Coordinates of Water Features that Intersect Alex Pond Trail**

Feature	Coordinates	
WF1	482257.58	5410369.83
WF2	482302.64	5409537.31
WF3	483769.46	5407120.71
WF4	483120.63	5407670.63
WF5	482638.47	5408168.84
WF6	482733.44	5408127.06
WF7	482787.41	5408103.31
WF8	482933.97	5408007.74
WF9	483664.08	5407275.37
WF10	482371.97	5410467.41
WF11	482417.38	5410518.49
WF12	482445.31	5410620.67
WF13	482304.00	5409674.91
WF14	482363.98	5409128.30
WF15	482323.91	5409886.86
WF16	483605.71	5407392.09

Notes: NAD83 UTM Zone 21 North. Water features visible on a 1:50,000 topo map.

Government of Newfoundland & Labrador  
 Department of Municipal & Intergovernmental Affairs



**NOTE TO USERS**

The information on this map was compiled from land surveys registered in the Crown Lands Registry.

Since the Registry does not contain information on all land ownership within the Province, the information depicted cannot be considered complete.

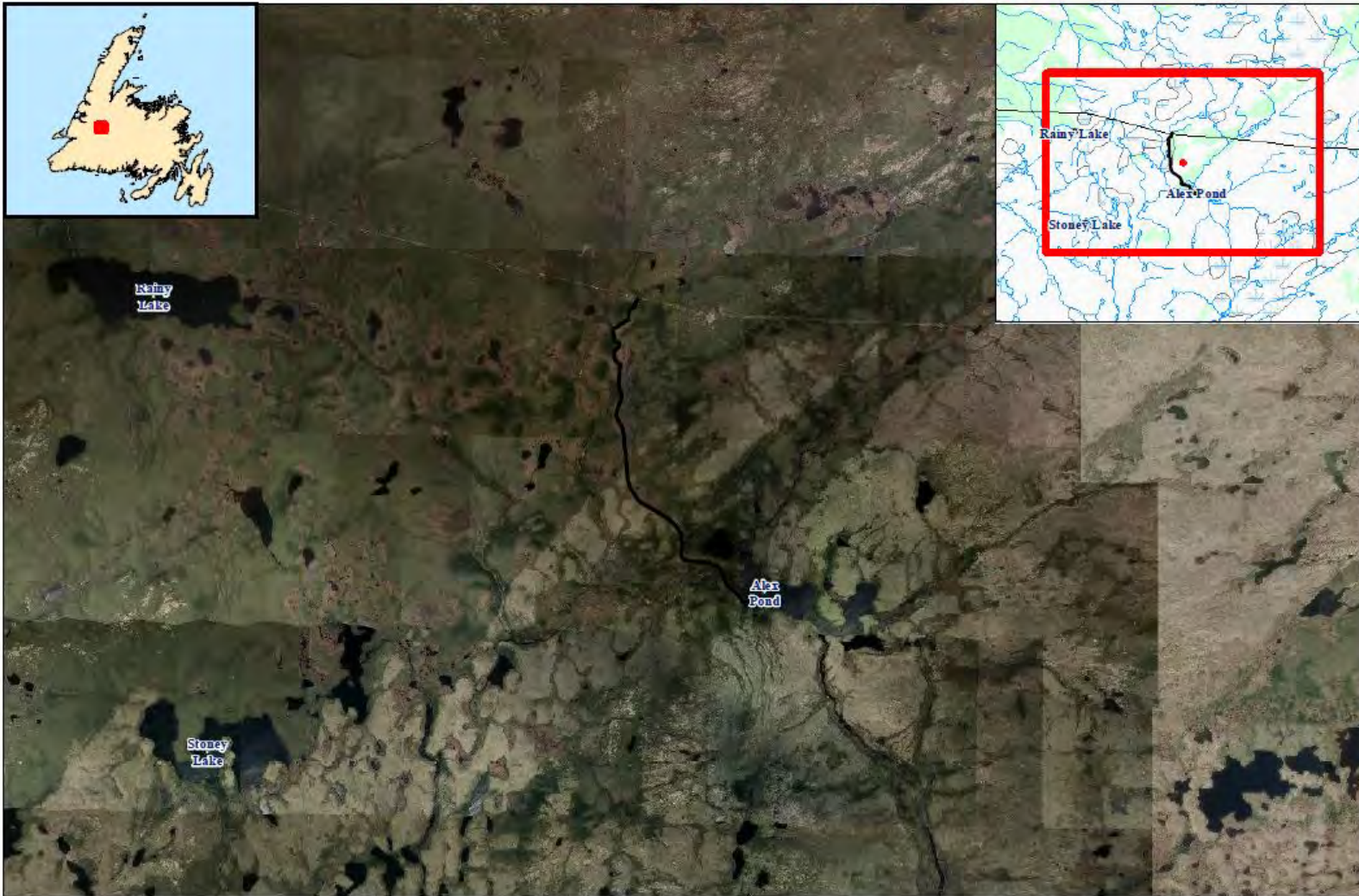
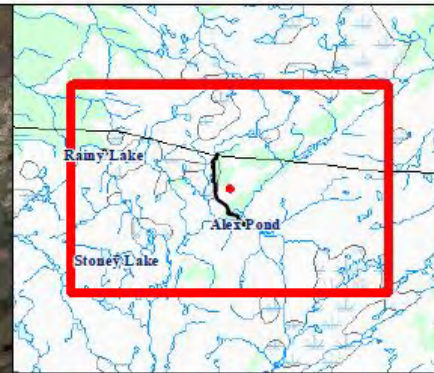
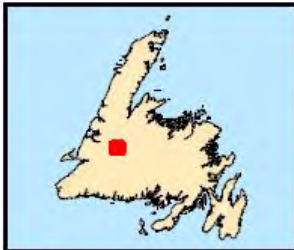
The boundary lines shown are intended to be used as an index to land titles issued by the Crown. The accuracy of the plot is not sufficient for measurement purposes and does not guarantee title.

Users finding any errors or omissions on this map sheet are asked to contact the Crown Titles Mapping Section, Howley Building, Highways Line, St. John's Newfoundland.

Users finding errors or omissions can contact the Crown Titles Mapping Section by telephone at 729-0061. Some titles may not be plotted due to Crown Lands volumes missing from the Crown Lands registry or not plotted due to insufficient survey information.

The User hereby indemnifies and saves harmless the Minister, its officers, employees and agents from and against all claims, demands, liabilities, actions or cause of actions alleging any loss, injury, damages and costs (including claims or demands for any violation of copyright or intellectual property) arising out of any tracing or incomplete Crown Land files, and the Minister, its or her officers, employees and agents shall not be liable for any loss of profits or contracts or any other loss of any kind as a result.

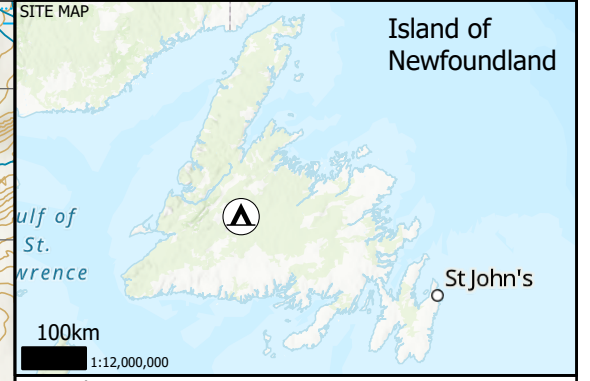
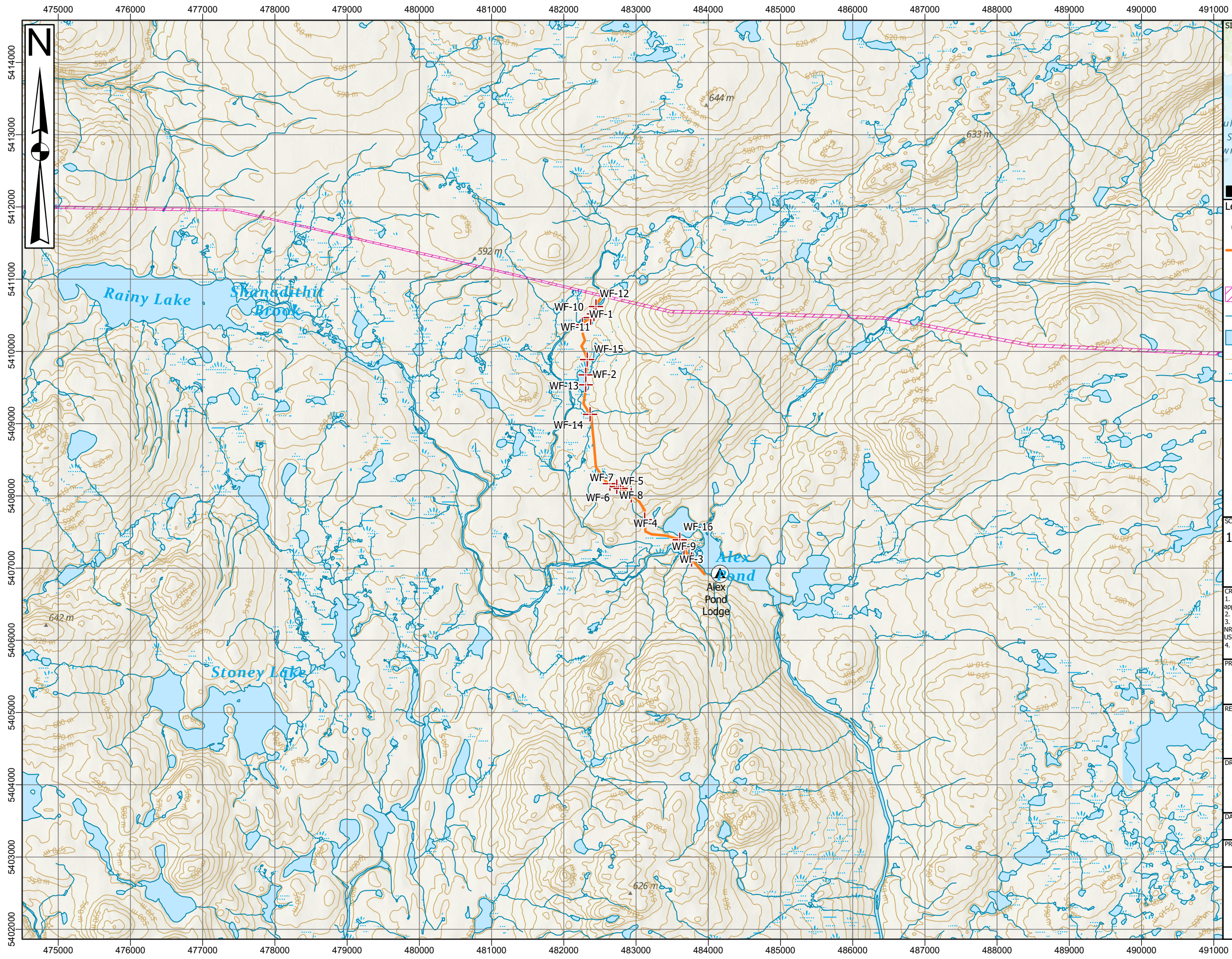
For inquiries please contact a Regional Lands Office.  
 Corner Brook - 637-2387  
 Gander - 256-1400  
 Goose Bay - 836-2488  
 St. John's - 729-2654  
 Clarenville - 466-4074  
 Grand Falls-Windsor 292-4267



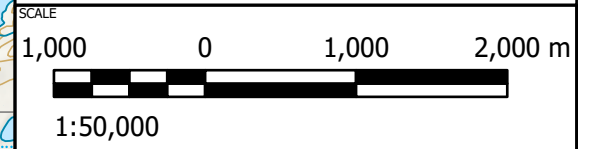
Crown Lands Application 145971 - Alex Pond



Figure 15: Alex Pond Trail (2015)



- Legend**
- Lodge
  - Alex Pond Trail
  - Trail-Water Intersection
  - Transmission Line
  - Watercourse
  - Waterbody
  - 10m Contour
  - Wetland



**CREDITS/NOTES**

1. This drawing is a schematic representation. Sizes, locations and dimensions are approximate.
2. COORDINATE SYSTEM: NAD 1983 CSRS UTM Zone 21N
3. Esri, NASA, NGA, USGS, Esri Canada, Esri, HERE, Garmin, SafeGraph, METI/NASA, USGS, NRCAN, Parks Canada, Esri, HERE, Garmin, FAO, NOAA, USGS, NRCAN, Parks Canada, Esri, USGS
4. Contains information from CanVec

**PROJECT TITLE**

**ATV/ARGO TRAILS FOR  
RED INDIAN LAKE OUTFITTING**

**REPORT TITLE**

**ENVIRONMENTAL PROTECTION PLAN**

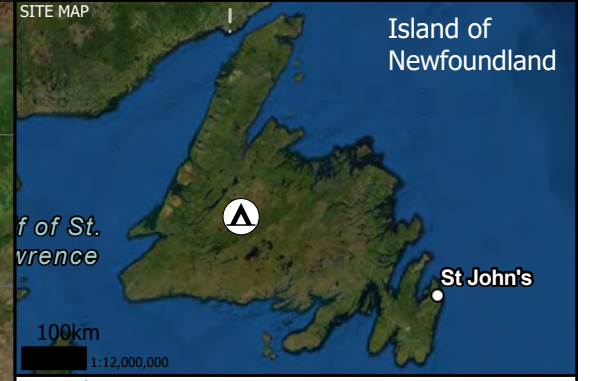
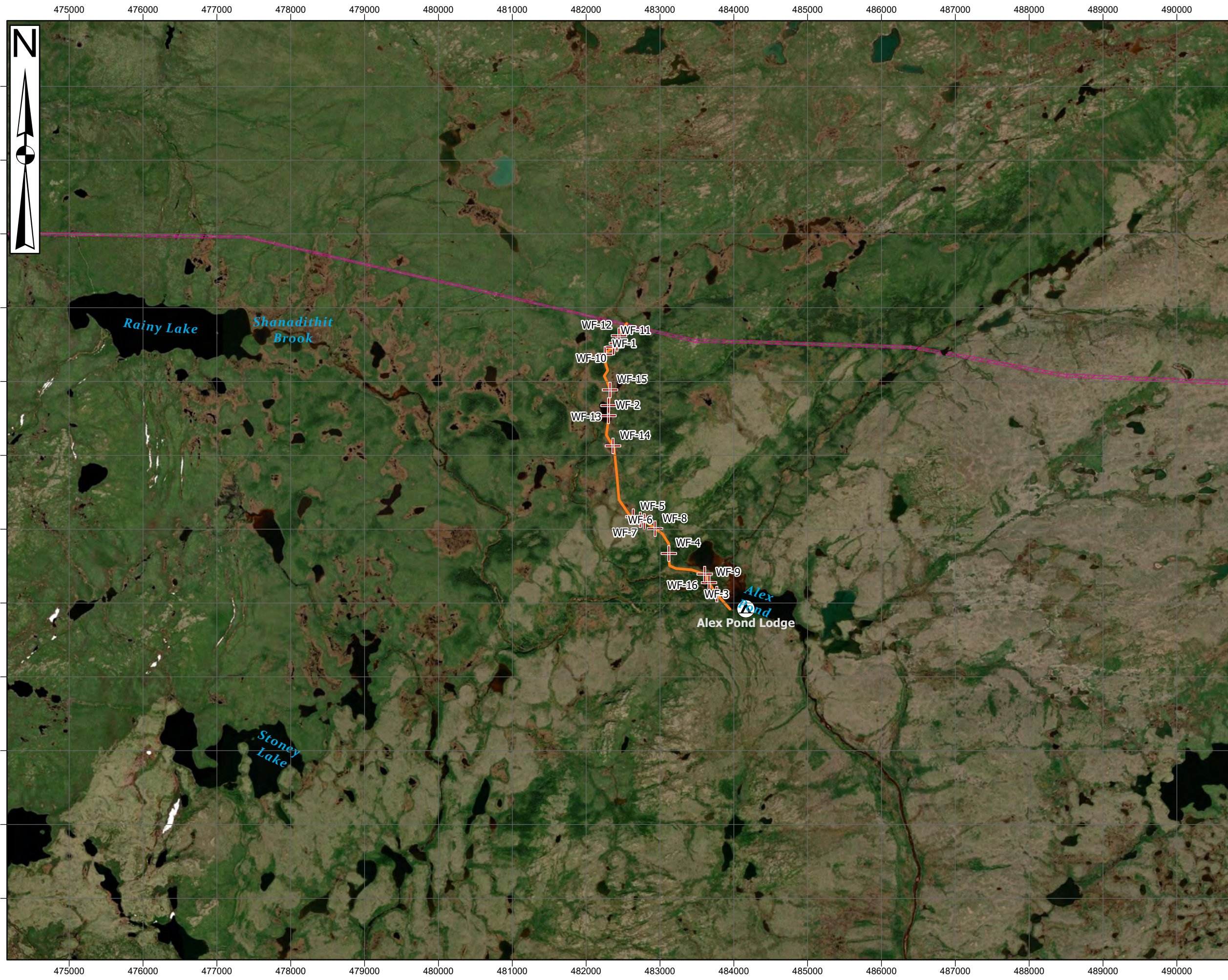
**DRAWING TITLE**

**ALEX POND TRAIL**

<b>DATE</b> 5/5/2022	<b>DRAWN BY</b> AS	<b>CHECKED BY</b> DWR
<b>PROJECT NO.</b> 80061.01	<b>DRAWING NO.</b> FIGURE 16	<b>REVISION NO.</b>

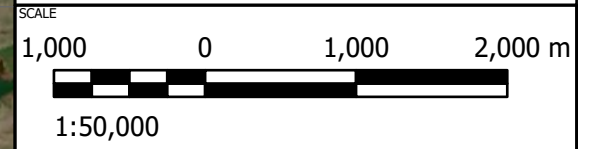


Local Drawings and Files \Projects\80061\80061\_016.dwg, Date: 05/05/2022



**Legend**

- Lodge
- Alex Pond Trail
- Trail-Water Intersection
- Transmission Line



**CREDITS/NOTES**

1. This drawing is a schematic representation. Sizes, locations and dimensions are approximate.
2. COORDINATE SYSTEM: NAD 1983 CSRS UTM Zone 21N
3. Earthstar Geographics, Esri, HERE, Garmin, FAO, NOAA, USGS, NRCan, Parks Canada
4. Contains information from CanVec

**PROJECT TITLE**

**ATV/ARGO TRAILS FOR  
RED INDIAN LAKE OUTFITTING**

**REPORT TITLE**

**ENVIRONMENTAL PROTECTION PLAN**

**DRAWING TITLE**

**ALEX POND TRAIL**

DATE 5/6/2022	DRAWN BY AS	CHECKED BY DWR
PROJECT NO. 80061.01	DRAWING NO. FIGURE 17	REVISION NO.

**GEMTEC**  
CONSULTING ENGINEERS  
AND SCIENTISTS

\\c:\projects\80061\80061.dwg

### **3.6 Kenneth Brook Trail - CL 145972**

Please note that the request for licensing of this trail has been withdrawn.