

**Environmental Assessment Registration Document**  
**Agriculture Land Development**  
**Springdale Jct.**

**Submitted to the Government of Newfoundland and Labrador**  
**Department of Environment and Climate Change**  
**Environmental Assessment Division**

**Prepared By: Michael Warren**

**Date: August 2, 2022**

(Crown Land Application No. C 158865)

**NAME OF UNDERTAKING:**

**Agricultural Land Development  
Springdale Jct.**

**PROPONENT:**

i. Name of Corporate Body: Route 390 Farm

ii.

iii. Owner( Principle Contact ) Michael Warren

**THE UNDERTAKING**

Nature of the undertaking: This project involves the development of approximately 18 acres for root crop production within a Crown Land agricultural lease.

Purpose for the undertaking: The project aims to increase the productive land base of root crops in the area and to grow for future expansion.

**DESCRIPTION OF THE UNDERTAKING**

**Geographical Location:** The general location of the project is the corner of route 390 and the TCH. The lease will be bounded by Warrens Farm , Hank Clarke and route 390.

**The Development:** The development of fields will require removing of trees, stumps and stones as well as rock picking, adding soil amendments (Lime ) and planting of crop.

All soils within the lease deemed arable will be developed. Areas that are not accessible or farmable will be left in its natural state .

**Construction:** The land development will start when the lease has been approved and title has been issued. There is an existing road to the lease from previous owner that passes under a transmission line and has been approved for usage by NL Hydro.

The land development will start in the fall and all useable farm land to be cleared and enhanced in a 3-5 year period.

---

There are no foreseeable sources of pollution during the construction of the land development. All work will be completed following the Environmental Farm Practice Guidelines for Vegetable Producers as well as conditions set out in the lease agreement . The parcel applied for is being processed through the normal Crown Land procedure and all government departments will have the opportunity to identify land use conflicts.

**Operation:** All farmable land will be cleared and will be put in production for the life of the farm. Soil amendment will be made regularly and crops harvested at maturity.

**Occupations:** Development stage will include land clearing persons and Production stages will include general farm workers .

**Maps of the area are attached**

**Sincerely,**

**Michael Warren**

**July 20th, 2022**

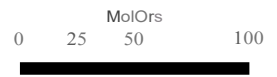


# LCP Application #120 Existing Land Use Springdale Junction, NL

- Legend**
- LCP
  - Idle
  - Regen



1:3,000



Designed for Illustrative Purposes Only





# Department of Fisheries, Forestry and Agriculture Crown Lands Division



## **NOTE TO USERS**

The information on this map was compiled from land surveys registered in the Crown Lands Registry.

Since the Registry does not contain information on all land ownership within the Province, the information depicted cannot be considered complete.

The boundary lines shown are intended to be used as an index to land titles issued by the Crown. The accuracy of the plot is not sufficient for measurement purposes and does not guarantee title.

Users finding any errors or omissions on this map sheet are asked to contact the Crown Lands Inquiries Line by telephone at 1-833-891-3249 or by email at [CrownLandsInfo@gov.nl.ca](mailto:CrownLandsInfo@gov.nl.ca).

Some titles may not be plotted due to Crown Lands volumes missing from the Crown Lands registry or not plotted due to insufficient survey information.

The User hereby indemnifies and saves harmless the Minister, his officers, employees and agents from and against all claims, demands, liabilities, actions or cause of actions alleging any loss, injury, damages and matter (including claims or demands for any violation of copyright or intellectual property) arising out of any missing or incomplete Crown Land titles, and the Minister, his or her officers, employees and agents shall not be liable for any loss of profits or contracts or any other loss of any kind as a result.

**For inquiries please contact the Crown Lands Inquiries Line by telephone at 1-833-891-3249 or by email at [CrownLandsInfo@gov.nl.ca](mailto:CrownLandsInfo@gov.nl.ca). Or visit the nearest Regional Lands Office; [http://www.flr.gov.nl.ca/departement/contact\\_lands.html](http://www.flr.gov.nl.ca/departement/contact_lands.html)**

Scale 1:10,000

0 140 280 560 840 1,120 Meters





# Department of Fisheries, Forestry and Agriculture Crown Lands Division



## **NOTE TO USERS**

The information on this map was compiled from land surveys registered in the Crown Lands Registry.

Since the Registry does not contain information on all land ownership within the Province, the information depicted cannot be considered complete.

The boundary lines shown are intended to be used as an index to land titles issued by the Crown. The accuracy of the plot is not sufficient for measurement purposes and does not guarantee title.

Users finding any errors or omissions on this map sheet are asked to contact the Crown Lands Inquiries Line by telephone at 1-833-891-3249 or by email at [CrownLandsInfo@gov.nl.ca](mailto:CrownLandsInfo@gov.nl.ca).

Some titles may not be plotted due to Crown Lands volumes missing from the Crown Lands registry or not plotted due to insufficient survey information.

The User hereby indemnifies and saves harmless the Minister, his officers, employees and agents from and against all claims, demands, liabilities, actions or cause of actions alleging any loss, injury, damages and matter (including claims or demands for any violation of copyright or intellectual property) arising out of any missing or incomplete Crown Land titles, and the Minister, his or her officers, employees and agents shall not be liable for any loss of profits or contracts or any other loss of any kind as a result.

**For inquiries please contact the Crown Lands Inquiries Line by telephone at 1-833-891-3249 or by email at [CrownLandsInfo@gov.nl.ca](mailto:CrownLandsInfo@gov.nl.ca). Or visit the nearest Regional Lands Office; [http://www.flr.gov.nl.ca/departement/contact\\_lands.html](http://www.flr.gov.nl.ca/departement/contact_lands.html)**

Scale 1:24,000

0 340 680 1,360 2,040 2,720 Meters





# Department of Fisheries, Forestry and Agriculture Crown Lands Division



## NOTE TO USERS

The information on this map was compiled from land surveys registered in the Crown Lands Registry.

Since the Registry does not contain information on all land ownership within the Province, the information depicted cannot be considered complete.

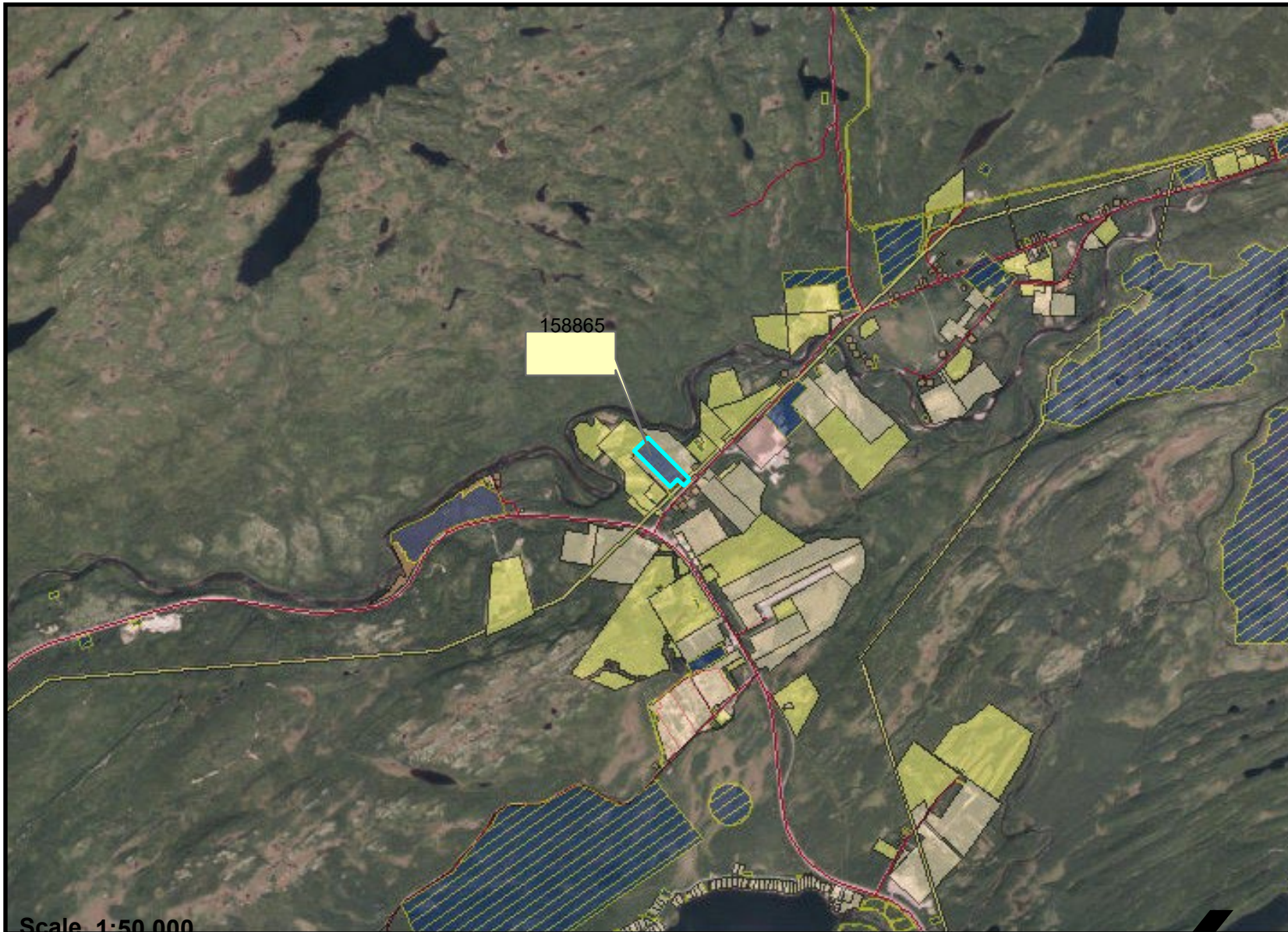
The boundary lines shown are intended to be used as an index to land titles issued by the Crown. The accuracy of the plot is not sufficient for measurement purposes and does not guarantee title.

Users finding any errors or omissions on this map sheet are asked to contact the Crown Lands Inquiries Line by telephone at 1-833-891-3249 or by email at [CrownLandsInfo@gov.nl.ca](mailto:CrownLandsInfo@gov.nl.ca).

Some titles may not be plotted due to Crown Lands volumes missing from the Crown Lands registry or not plotted due to insufficient survey information.

The User hereby indemnifies and saves harmless the Minister, his officers, employees and agents from and against all claims, demands, liabilities, actions or cause of actions alleging any loss, injury, damages and matter (including claims or demands for any violation of copyright or intellectual property) arising out of any missing or incomplete Crown Land titles, and the Minister, his or her officers, employees and agents shall not be liable for any loss of profits or contracts or any other loss of any kind as a result.

**For inquiries please contact the Crown Lands Inquiries Line by telephone at 1-833-891-3249 or by email at [CrownLandsInfo@gov.nl.ca](mailto:CrownLandsInfo@gov.nl.ca). Or visit the nearest Regional Lands Office; [http://www.flr.gov.nl.ca/departement/contact\\_lands.html](http://www.flr.gov.nl.ca/departement/contact_lands.html)**



Scale 1:50,000

Compiled on November 04, 2021

0 700 1,400 2,800 4,200 5,600 Meters

