



**NEWFOUND
GOLD CORP**

**Advanced Mineral Exploration Activities at the Queensway Gold Project -
Queensway North, Central Newfoundland**

Environmental Registration

Pursuant to the Newfoundland and Labrador Environmental Protection Act, SNL 2002, cE-14.2,
Sections 48(1)(h) and 52.

New Found Gold Corp.

300 Garrett Drive Gander, NL, A1V 0H6

October 20th, 2023

Executive Summary

New Found Gold Corporation (NFG) is proposing to continue the advanced mineral exploration program on its mineral licences associated with the Queensway Gold Project, particularly at Queensway North located east and north of Appleton, in central Newfoundland (Figures 1 to 4). The 36 mineral licenses associated with this Project include; 006821M, 007984M, 022216M, 022491M, 023720M, 023721M, 023804M, 023860M, 023861M, 023862M, 023863M, 023864M, 023866M, 023874M, 023875M, 023881M, 023916M, 023962M, 023987M, 024026M, 024031M, 024136M, 024138M, 024139M, 024140M, 024141M, 024264M, 024265M, 024266M, 024268M, 024997M, 025008M, 026074M, 030714M, 035198M, and 035681M.

The Advanced Exploration program will primarily focus on diamond drilling (Core drilling) and will occur over much of the same property as described in Registration 2106, previously released from the Environmental Assessment (EA) review process in October 2020 for diamond drilling. In addition, it will cover some of the same area defined in Registration 2214 previously released for a 48 square kilometers (km²) seismic survey and Trenching at the Keats Zone. That completed seismic survey included 226 km of source cut lines and 43 km of receiver cut lines, totaling 269 linear km. Registration 2214 also covers an exploration trench which will allow for a better understanding of vein orientation and mineralization characteristics within the Keat's Zone. This trench has a footprint of approximately 8,000 m² and has an estimated overburden removal volume of 40,000 m³. In addition to the Queensway North mineral licenses, NFG also holds mineral licenses associated with two other areas, Queensway South (QWS) and non-contiguous licences north and west of QWN (Figure 3). This document does not describe exploration activities associated with these other areas. Should exploration programs for these areas be proposed in the future, NFG will complete separate permits for them.

NFG will complete all Project work in accordance with regulatory permits, approvals and/or authorizations and with procedures outlined in their exploration Environmental Protection Plan and other associated plans. Most Project activities align with activities described in a previously released Projects (Registrations 2106 & 2214), and NFG will abide by conditions of release associated with those releases and associated permits.

The natural environment of this project area was characterized and assessed using background information, confirmatory fieldwork, aerial imagery, publicly available data and GIS software. The Study Area, as defined on Figure 4, has been subject to significant historical alteration from logging and past mineral exploration activities. The biophysical features that remain undisturbed were identified and assessed to determine potential impacts and associated mitigation measures, if necessary. NFG will notify the EA Division and the Mineral Lands Division of any significant changes to their planned exploration work.

Table of Contents

Executive Summary	i
1.0 Name of Undertaking	1
2.0 Proponent	1
i) Name of Corporate Body	1
ii) Address	1
iii) Chief Executive Officer	1
iv) Principle Contact	1
3.0 The Undertaking	2
i) Nature of the Undertaking	2
ii) Purpose/Rationale/Need for Undertaking	2
4.0 Description of the Undertaking	3
i) Geographic Location	3
ii) Physical Features	3
iii) Exploration	9
iv) Operation	12
v) Occupations	14
vi) Project Related Documents	17
vii) Baseline Studies	17
5.0 Approval of the Undertaking	18
6.0 Schedule	19
7.0 Funding	19
8.0 Limitations	19

List of Figures

Figure 1: Queensway Gold Project – Property Location Map (1:3,000,000)	4
Figure 2: Queensway Gold Project – Queensway Licences Map (1:500,000)	5
Figure 3: Queensway Gold Project – Queensway North Project Area (1:100,000)	6
Figure 4: Queensway North – Planned Exploration Activity Map (1:75,000)	8
Figure 5: Queensway North – Drill Hole Collars to Date (1:55,000)	10

List of Tables

Table 1: New Found Gold Project Occupation count as of October 17, 2023, with NOC.	15
--	----

List of Photographs

Picture 1: Visible Gold in quartz veining - sawn drill core.	2
Picture 2: Typical Core Drill Setup.	11
Picture 3: Inside a Typical Diamond Drill Rig.	11
Picture 4: Geologists and Technicians logging core.	16
Picture 5: Core Cutter taking samples from half cores.	16

Appendices

Appendix 1 List of New Found Gold Mineral Exploration Licenses

Appendix 2 Project Review Maps (Tabloid 11”X17”)

Map 1	Appleton Fault Zone North – Planned Exploration	1:20,000
Map 2	Appleton Fault Zone South – Planned Exploration	1:20,000
Map 3	Joe Batts Pond Fault Zone S – Planned Exploration	1:20,000
Map 4	Joe Batts Pond Fault Zone – Planned Exploration	1:20,000
Map 5	Joe Batts Pond Fault Zone N – Planned Exploration	1:20,000

Appendix 3 Project Permits and Approvals

Appendix 4 Project Baseline Studies

Appendix 5 Project ERP, WMP, WEP, and other Plans.

1.0 Name of Undertaking

Queensway Gold Project (Queensway North Gold Project)

2.0 Proponent

i) Name of Corporate Body

New Found Gold Corporation

ii) Address

Field Office Newfoundland and Labrador

300 Garrett Drive, Gander, NL. A1V 0H6

Head Office British Columbia

1600-595 Burrard St., Vancouver, BC, V7X 1L3

Web Page <https://newfoundgold.ca/>

iii) Chief Executive Officer

Mr. Greg Matheson, P.Geo. Chief Operating Officer (COO)

Telephone: 705-570-1233

Email: gmatheson@newfoundgold.ca

iv) Principle Contacts

Dr. Jared Saunders, PhD., CRSP, EP, Director of Environmental & Regulatory Affairs

Telephone: 709-424-9567

Email: jsaunders@newfoundgold.ca

Mr. Michael Regular, P.Geo. Lands Management & Permitting

Telephone: 709-486-7705

Email: mregular@newfoundgold.ca

3.0 The Undertaking

i) Nature of Undertaking

Continued advanced mineral exploration activities including primarily diamond bit core drilling with variable amounts of geochemical and geophysical surveys, prospecting, mapping, geological studies and related exploration activities at the Queensway Gold Project – Queensway North portion, Appleton - Gander Lake area, central Newfoundland.

ii) Purpose/Rationale/Need for Undertaking

New Found Gold Corp (NFG) is a publicly traded mineral exploration company (TSX-V:NFG;NYSE-A:NFGC) exploring for gold on the island of Newfoundland (Figure 1) at their Queensway Gold Project (Figure 2). As part of its exploration efforts the company wishes to continue its current diamond drilling program at the Queensway North (QWN) portion of the project (Figure 3). The company is currently drilling core samples at the project for geological/lithological examination, sampling to determine the orientation and size of gold mineralized bodies (Pictures 4 & 5) as well as testing the samples for gold content to assess economic viability (Picture 1).



Picture 1: Visible Gold in quartz veining - sawn drill core.

4.0 Description of the Undertaking

i) Geographic Location

The QWN Project is located between Gander Lake and the Gander River area from a north south perspective, from east to west it is located between the communities of Gander and Appleton including a transect by the Trans-Canada Highway (TCH)(Figure 3). The southern portions of the Queensway project lay south of Gander lake extending to the Baie d'Espoir Highway, near Middle Ridge and Third Berry Hill Pond (Figure 2). Non contiguous portions of the project occur north of the QWN towards Little Rocky Brook, Bellman's Pond, Ten Mickle Lake and Twin Ponds (Figure 2). This Environmental Registration deals solely with proposed drilling and related activities at QWN. A list of the Queensway mineral exploration licences is attached as Appendix 1. with more detailed review maps in Tabloid format and scaled to 1:20,000 attached as Appendix 2.

ii) Physical Features

The project requires the placement of drill sites and access trails extending from existing forest access roads and trails to proposed drill locations.

Drill sites are temporary in nature and are areas cleared of brush and trees by mulching for a 10-15m radius to provide safe and open areas for the operation of a diamond core drill. These cleared sites are typically in operation for approximately 1-2 weeks prior to being placed on the reclamation list.

Drill access trails are temporary linear trails cleared of brush by mulching trees for a 3-5m width to allow for safe access to the drill sites. Digging and ditching are not required for the creation of drill access trails. These cleared trails are typically operated anywhere from 1-8 weeks prior to being reclaimed.

No buildings or other permanent infrastructure are planned outside the surface rights at the NFG core yard in the Appleton Industrial Park.

The topography of the area is dominated by broad, northeast trending ridges with linear, bogs, brooks, and larger ponds in the lower areas. Gander Lake, at 29 m asl and the Gander River are the major waterbodies nearest to the project area. Maximum elevation is approximately 100 m above sea level (asl) at Appleton on the TCH with a minimum of 20 m asl along the Gander River in the northern portions of the project. Previously harvested forest covers much of the project area with some significant recent cutover dating from 1990's to the 2010's. the recently harvested areas of the project have been silviculture treated with a mix of genetically enhanced black and white spruce and are part of the forest land managed by Corner Brook Pulp and Paper. Older harvested regions around the Town of Appleton have regenerated naturally with frequent harvest of suitable firewood by the local town residents. Old access roads run throughout the region along with ATV trails and trails developed by the exploration companies who have operated in this area since the mid 1980's.

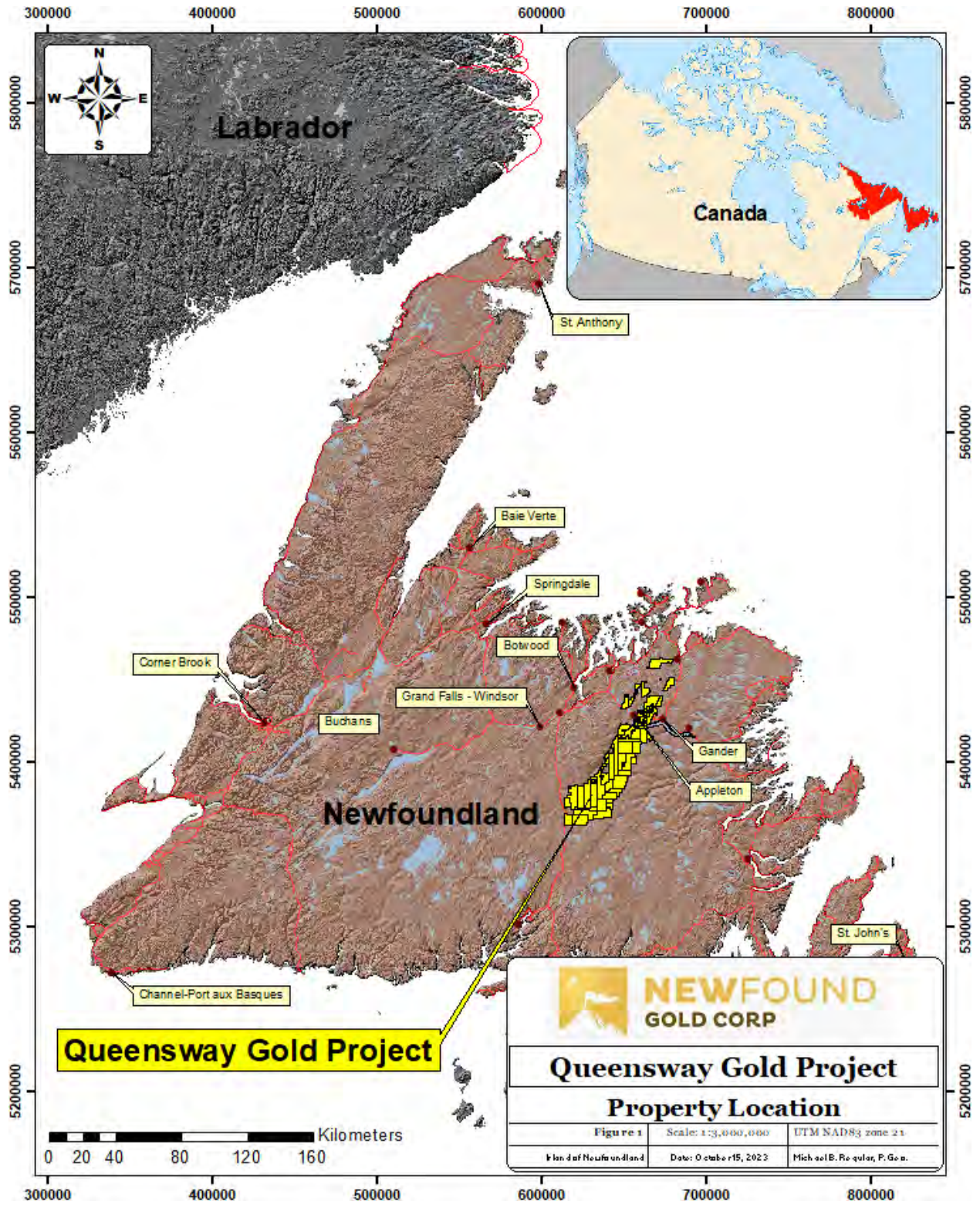


Figure 1: Queensway Gold Project – Property Location Map (1:3,000,000)

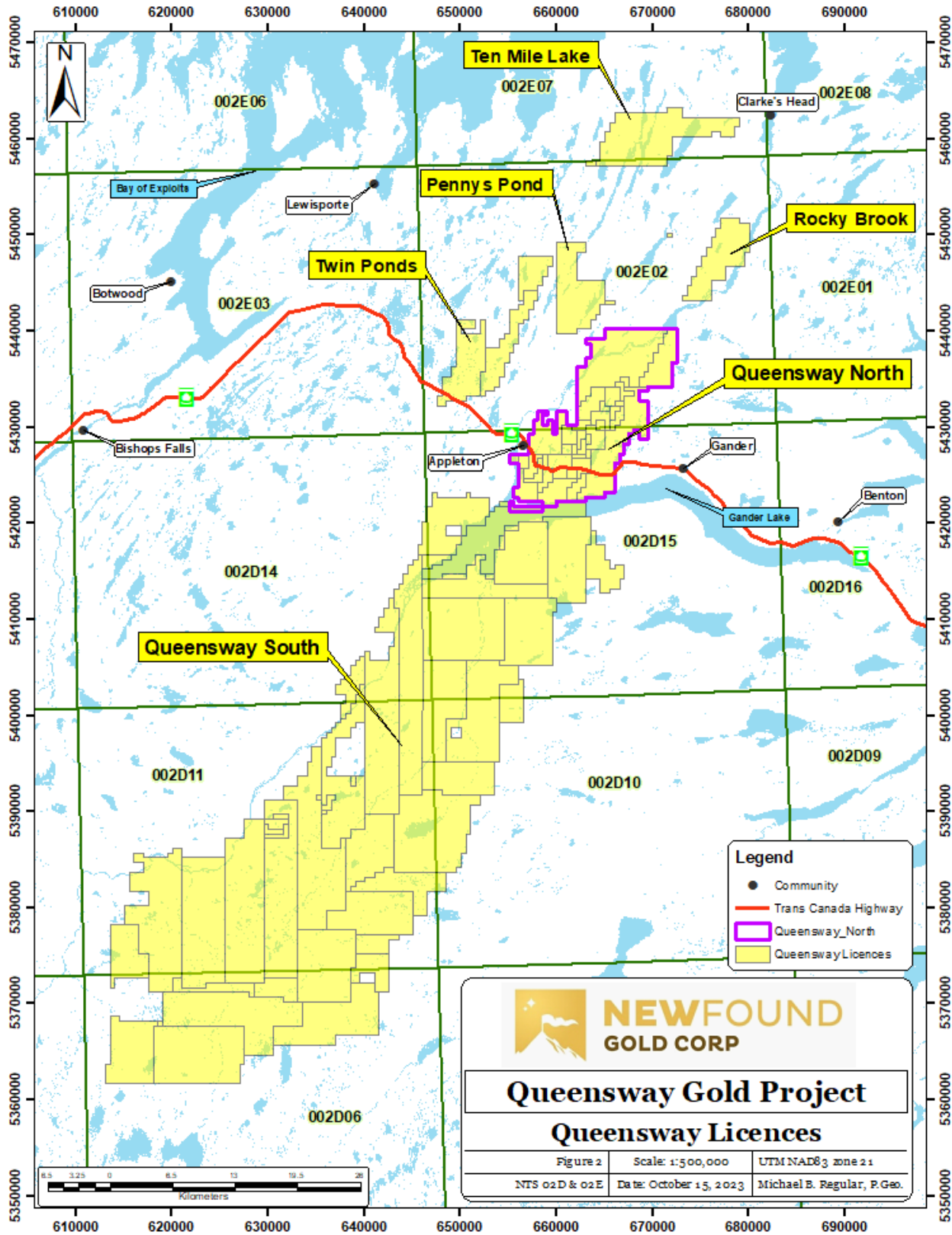


Figure 2: Queensway Gold Project – Queensway Licences Map (1:500,000)

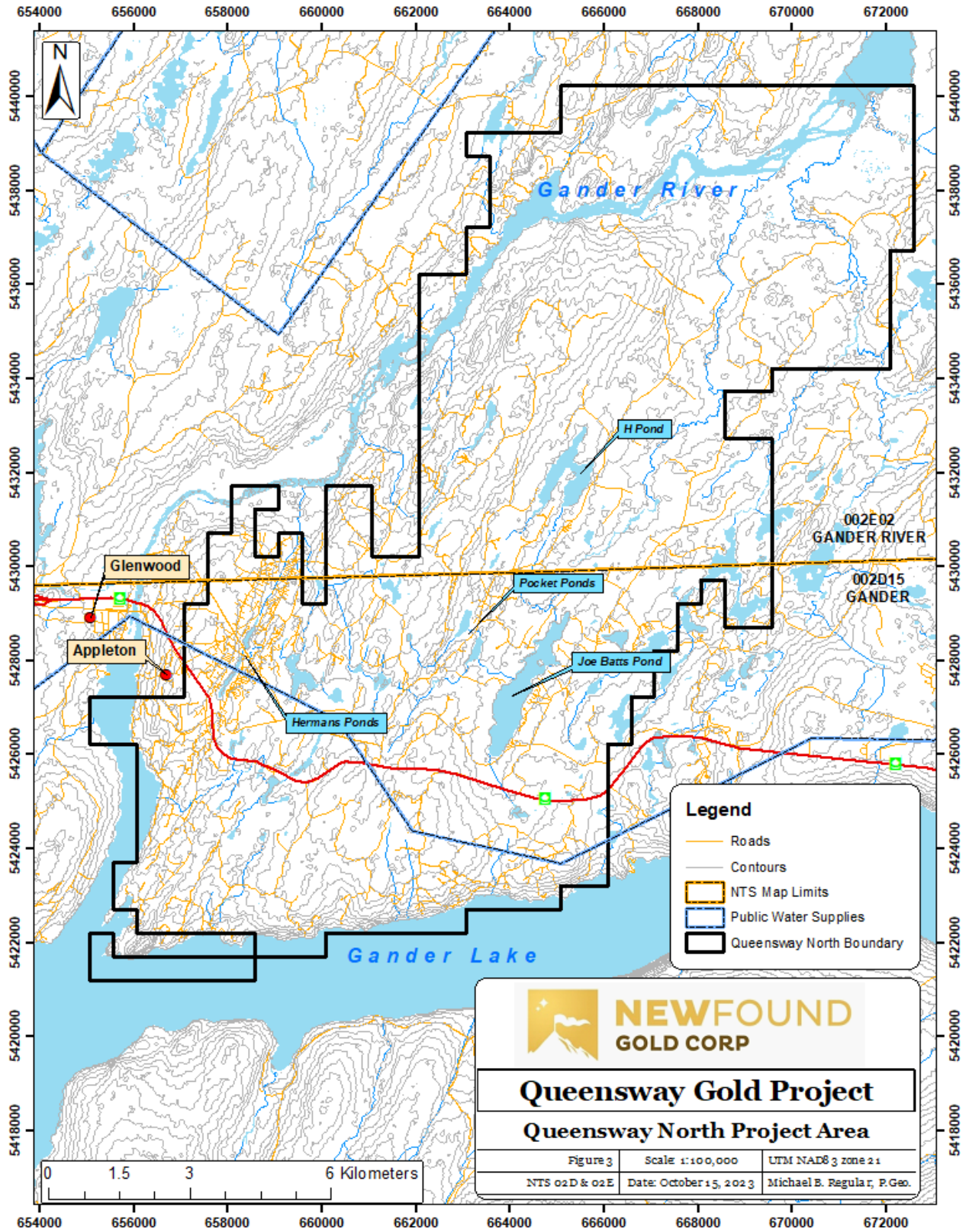


Figure 3: Queensway Gold Project –Queensway North Project Area (1:100,000)

The climate is a blended maritime-humid continental, with pleasant summers, a cool, wet, spring and autumn, and snowy, often windy, winters. Summer temperatures are typically in the low to mid 20's but highs can peak at over 30 degrees C. Winter temperatures range from -15 degrees C or occasionally colder to +5 degrees C or more during warmer winters however temperatures are variable averaging a high of 16 degrees C and a low of 0 degrees C. Snow usually occurs from December through April but can start earlier and extend later. Rainfall occurs through the spring, summer and fall mainly as showers to heavy rain, frequently with strong winds. Weather is dominated by ocean currents, prevailing westerlies, and storms from the Maritimes / Canada from the west or south along the US eastern seaboard.

The most local waterbodies to the drilling area include South Herman's Pond, North Herman's Pond, H-Pond and Pocket Ponds. Indicated in Figure 3 and the review maps in Appendix 2. NFG will not conduct any physical work within recognized buffer zones without prior approval. Recognized buffers include; 30m buffers on all waterbodies and wetlands, 100m buffers on tributaries of Gander Lake, 300m buffer around Gander Lake, 15m buffer along the T'Railway Provincial Park, the former Glenwood Park, the Town of Appleton, 300m from salmon pools along Gander River as well as other assorted buffers along Gander River, Protected Roads, Raptor nest sites and minor others.

The total area covered by a single drilling site is approximately 0.0625 ha and estimated that each drilling site requires 0.05Ha of trail development in support as one trail can service multiple drill site locations. As a results-driven industry, mineral exploration companies make final decisions on exact drill site locations based on successive information collected. The general drilling area is known based on geological features and as such several areas are defined on the accompanying review maps in Appendix 2 without indicating the exact location of trail/drill site development.

The planned drilling areas represented on the map of Figure 4 covers 4300 hectares. Each drill site location can cover a range of 0.03 to 0.07 ha with a site radius of 10-15 metres. Of course, not all of this area will be drilled, instead the areas on the maps represent potential locations for drill sites. With an estimate around a maximum of 700 holes drilled per year the maximum disturbance from site setups could be 20 to 50 ha. This disturbance constitutes 0.02 % of the total drilling area per year which does not consider any of the progressive remediation efforts for the same areas or instances where multiple holes are drilled from the same setup.

Drill sites and trails throughout the Joe Batt's Pond region was recently harvested and will require no removal of vegetation prior to work. Other Areas contain varying degrees of second-generation growth such as that along the Appleton Fault Zone (Figure 3 and review maps in Appendix 2). NFG has conducted silviculture in 2023 planting over 123,000 seedlings and has plans for a similar amount in 2024.

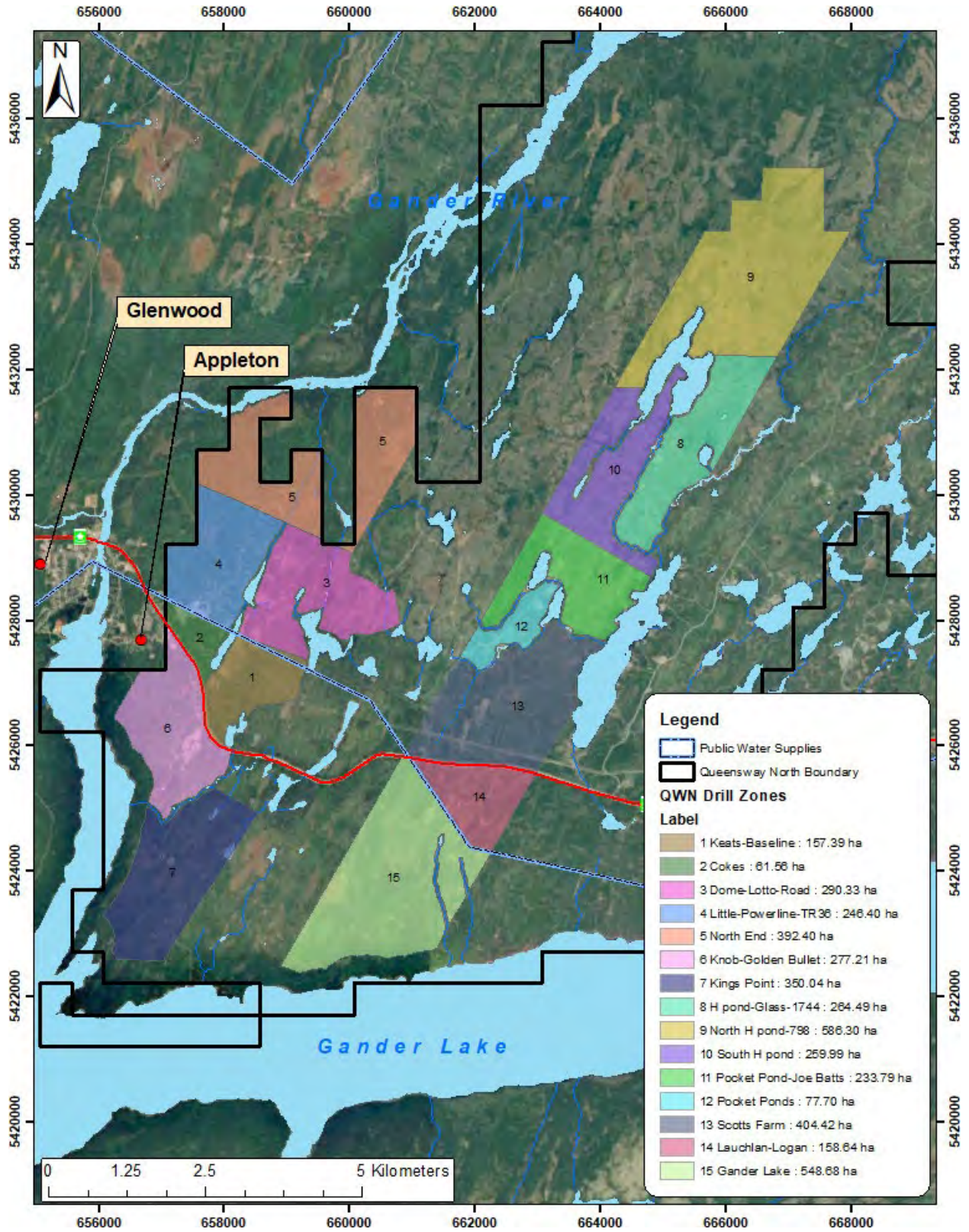


Figure 4: Queensway North - Planned Exploration Activity Map (1:75,000)

iii) Exploration

The drilling by the company has been ongoing at the Queensway Gold Project since August of 2020 under a number of permits covering a varied collection of exploration activities. As of October 17, 2023, there have been 1873 holes completed and 469,938 metres of core extracted at QWN using 7 to 10 drill rigs (Figure 5). There were 10 holes and 1,985 metres drilled in 2019, 66 holes and 13,989 metres drilled in 2020, 393 holes and 123,091 metres drilled in 2021, 615 holes and 177,495 metres drilled in 2022 with 788 holes and 153,378 metres so far in 2023. Clearing of drill site areas and access trails has occurred intermittently at this project site since 1991 with over 200 historical sites existing at the beginning of this program.

Advanced exploration by the company is expected to continue through the next 3-5 years and possibly beyond, although decisions to continue the operation will be based solely on gold markets, price, and the capacity of the company to raise capital. As the exact location of drill site locations and trails are not precisely known until several weeks prior to their placement this process occurs concurrently with the operation of the diamond drilling. Progressive rehabilitation of the drill site locations once drill work has ceased at those sites is ongoing and NFG targets a remediation rate equal to that mulched for drilling or other exploration activity resulting in a low number of active drilling sites at any given time.

All activity associated with the proposed drill program will be isolated to two existing exploration corridors (Figures 4 & 5). Exploration will see the opening of only temporary sites and no permanent construction is planned at this time. Pictures 2 and 3 show typical drill site setups and a drills interior.

Drill sites and trails do not require the use of aggregates or other materials and no stream crossings are planned.

Site clearing is conducted with an excavator mounted “mulcher” which grinds the vegetation and small trees into wood chips leaving the root mass intact so that the drill sites and trails are passable by heavy tracked vehicle. Chainsaws are used for the felling of larger timber.

Potential sources of pollutants during the exploration process could include air emissions from mobile heavy equipment (excavator) and potential for petroleum spills (excavator-diesel fuel/hydraulic oil, chainsaw-gasoline). Solid waste materials will include any merchantable timber encountered in the clearing process.

Air pollution will be controlled by having all equipment on site fitted with the appropriate emission-control equipment. Noise levels associated with the work are not expected to reach harmful levels as they will be in areas removed from local infrastructure. The nearest residential areas are over 1 km from the project site.

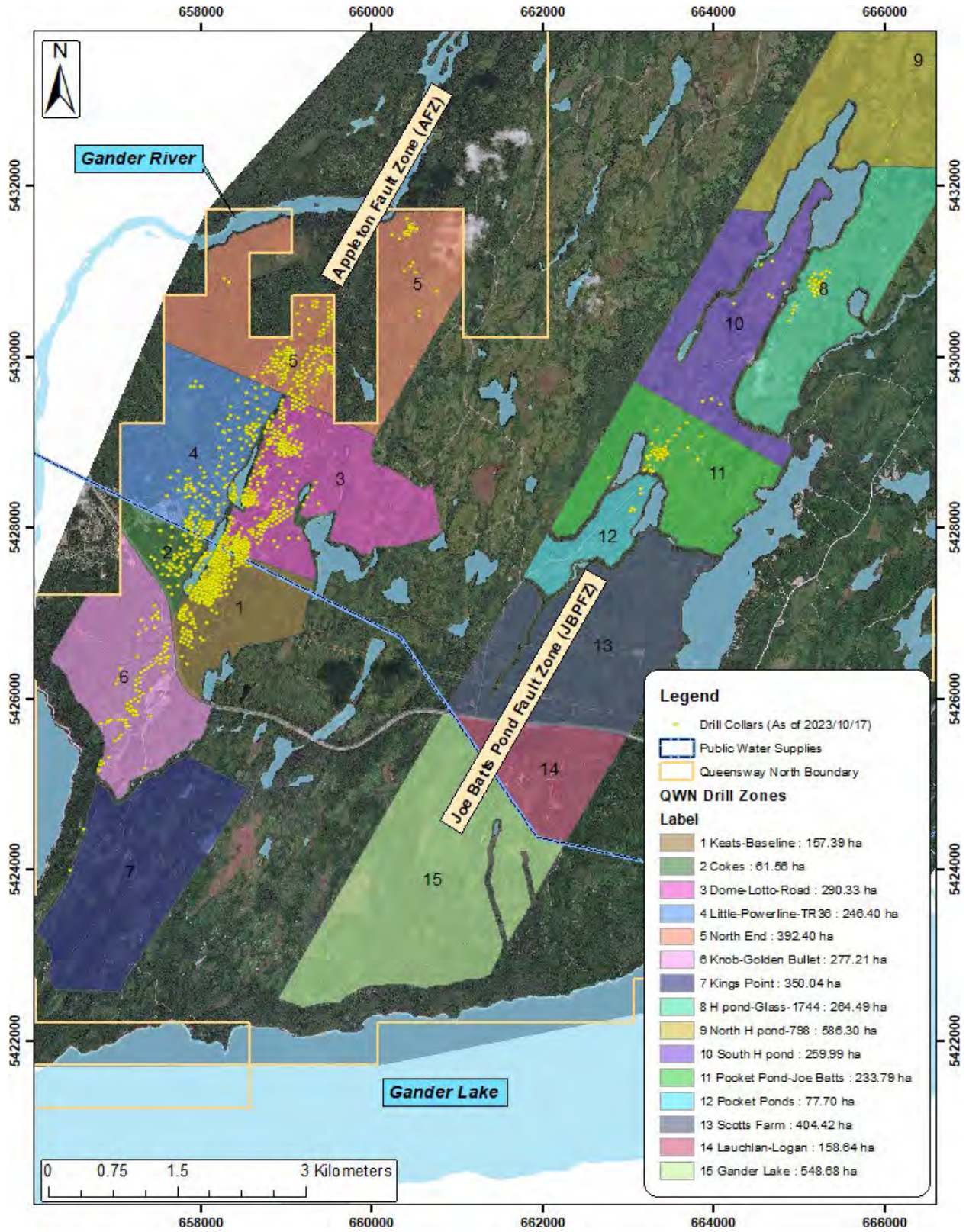


Figure 5: Queensway North – Drill Hole Collars to Date (1:55,000)



Picture 2: Typical Core Drill Setup.



Picture 3: Inside a Typical Diamond Drill Rig.

Site clearing will occur in phases, as needed, and noise levels are not anticipated to exceed maximum allowable levels at the Town of Appleton. The use of modern low noise core drill rigs and daytime use of heavy machinery (excavators etc.) should generate no noise exceeding that already witnessed from the Trans-Canada Highway. There have been no documented complaints of noise being an issue in or around the proposed drilling areas which has received significant previous exploration since the late 1990's. Workers will have the proper hearing protection at the work sites which are controlled work environments. Domestic waste will be collected and disposed of in accordance with the Environmental Protection Act with onsite waste in Porta-Potties handled and maintained by an approved service provider.

Bulk fuel for exploration equipment will not be stored on site but will be brought in as required by a petroleum product service company. The handling of petroleum products on site will comply with the Storage and Handling of Gasoline and Associated Products Regulations. Complete and regularly checked emergency spill kits will be available on site for containment and cleanup of any hydrocarbon leaks or spills.

The erosion and transport of fine-grained particles in water during exploration will be controlled by using appropriate mitigating measures such as erosion control ditches, hay bales, silt fencing and berms.

An emergency spill response plan (Appendix 5) is in place and NFG Emergency/Environmental response teams are on site with PES (Petroleum and Environmental Services inc.) located within the project area.

Reclamation of drill sites and trails occurs concurrently with the operation and exploration and includes leveling of the drilling site, redistribution of vegetation or other organic materials around the site, regrading of any ruts left from the tracked vehicles, seeding of areas that cleared of vegetation and use of hay to stop any erosion of soil, ultimately the sites are treated with silviculture where applicable.

iv) Operation

The Company plans to operate a diamond drill at each of the proposed drill sites. Diamond drilling involves the operation of a diamond core drill which is supported by an excavator or bulldozer for mobility of the drilling rig. Water is used in the drilling process to remove drill cuttings (rock flour) from the drill hole and a small water pump is used to pump water to the diamond drill either from fresh or recycled sources. Over 90% of the water used in the operation is recycled at the drilling site.

Operation by the company is expected to continue throughout the year with a short break in December for the holidays and maintenance. With good results the company may decide to continue the operation for several more years. Diamond drilling has been ongoing at the project

since August 2020 and diamond drilling has occurred at this project site intermittently since 1991.

The diamond drill produces drill cores of approximately 6.3cm in diameter (HQ size) by using diamond encrusted drill bits to drill through the bedrock. The samples are removed from the drill pipe and placed into wooden boxes for transport and storage. The volume of the core removed from a nominal 300m drill hole is approximately 0.9m³.

Drill cores are removed from the site and transported to the company's drill core logging location where geologists and technicians process and sample the drill cores for geological information, gold and other analysis.

Effluent from the diamond core drill (a mixture of rock flour and water) is retained at the drilling site through the use of sumps to allow for the collection of solids with the water then being recycled back into the drilling rigs.

Since the diamond drill is not self-mobile, an excavator or bulldozer is used to drag the drilling rig from each drill site location to the next drill site location.

Pickup trucks and track mounted mobile vehicles are employed for the transportation of drill core and personnel to and from the drill sites.

Potential sources of pollutants from this activity include the liquid effluent from the drill (rock flour) which is a clay laden water and shall be prevented from entering any water courses using temporary containment sumps prior to removal from site. Petroleum products used by the diamond drill and bulldozer include diesel fuel and Biodegradable hydraulic oil. <https://petrocanadalubricants.com/en-ca/brand/environ>. Gasoline used in pickup trucks and off road vehicles, Air emissions from the bulldozer, diamond drill and water pump are considered a pollutant source and equipment is monitored regularly to ensure it is operating efficiently.

Potential resource conflicts could include recreational uses such as berry picking, firewood cutting, hunting, fishing, wildlife issues, and forestry.

Fuel for exploration equipment will not be stored on site but will be brought in as required by a petroleum product service company and stored in double walled tanks at the Appleton Industrial Park. The handling of petroleum products on site will comply with the Storage and Handling of Gasoline and Associated Products Regulations. Complete and regularly checked emergency spill kits will be available on site for containment and cleanup of any hydrocarbon leaks or spills.

The erosion and transport of fine-grained particles in water during exploration will be controlled by using appropriate mitigating measures such as erosion control ditches, hay bales, silt fencing and berms.

Reclamation of drill sites and trails occurs concurrently with the operation and exploration activities and includes the redistribution of vegetation or other organic materials around the site,

leveling of all drill sites, infilling of all sumps, regrading of any ruts left from the tracked vehicles, seeding of areas that cleared of vegetation and use of hay to stop any erosion of soil.

NFG maintains a dedicated environmental team tasked with the oversight of all on-site activities to ensure strict adherence to applicable environmental standards. We have formulated a comprehensive spill response plan and conduct daily monitoring to promptly detect any potential spills, leaks or releases of regulated substances. In preparation for any potential spill scenario, NFG has established and trained a specialized spill response team. In the rare event of such incidents, our team diligently follows established protocols, including the requisite reporting to regulatory agencies.

During any given day the company's specialized seeding, and pumping teams can be seen spreading hay and grass seed or pumping down sumps in preparation for remediation. Pump crew become more active during weather events to be sure NFG has a good control of surface runoff and sump waters. In the Spring NFG consults local silviculture contractors to plant tree seedlings in areas ready to plant, in 2023 this was 49 ha of planting with over 123,000 trees.

Despite the sizeable number of exploration holes drilled to date, the total count of active sites (comprising those prepped for drilling, actively drilling, or pending rehabilitation) has consistently remained below 100, typically hovering around 50 active drill sites. Also, when planning drilling activities during the breeding season, our environmental team ensures the execution of a bird survey prior to initiating any disturbance-related work and have been trained in identifying bird nesting sites and activity.

All project-related activities strictly adhere to the Occupational Health and Safety Act and its associated regulations. NFG maintains a vigilant health and safety team that routinely visits the site to monitor project operations and provide training to ensure that all contracted personnel also align with the OHS legislation. In 2023 the company received a COR certification from the Newfoundland and Labrador Construction Association and has now implemented a COR standard for all contractors working on the site.

v) Occupations

The company is an equal opportunity employer and seeks to maintain a diversity in its workforce including the hiring of women, men, transgender, minorities and first nations.

The company's current on-site workforce (253 as of October 2023) is currently 14% female, a number that varies with seasonal student employment and number of drill rigs or other contracted programs running. Some of the highest paying positions, as Geologists and Management are women.

Job Title	Employee Count	NOC
Geologist	26	22101
Technicians	18	22101
Environmental Health and Safety	10	21120
Management	19	70012
Senior Management	6	00015
General Labourers	77	85110
Heavy Equipment Operators	23	73400
Diamond Drillers	66	73402
Administration	8	14200
Total:	253	

Under 19	7
20-29 Age group	81
30-39 Age Group	58
40-49 Age Group	45
50+	62

Males	217
Females	36

Table 1: New Found Gold Project Occupation count as of October 17, 2023, with NOC.

A matter of significance pertains to the residency status of NFG employees, where a remarkable 94% of the workforce hails from Newfoundland and Labrador. As of October 17, 2023, the distribution is as follows: 67 employees have established their residence in Gander, while an additional 111 are living in central Newfoundland. Moreover, 60 employees come from various regions within the province, with 6 originating from Atlantic Canada, and 9 from more distant parts of Canada. Several out of province employees have purchased properties in NL and have relocated contributing to the increases in Newfoundland based employment.

It is noteworthy that 7.5% of our employee base, which accounts for 19 individuals, are recognized as First Nation as is Guntew Resources our primary Field Operations company. Some occupational pictures are provided below.



Picture 4: Geologists and Technicians logging core.



Picture 5: Core Cutter taking samples from half cores.

vi) Project Related Documents

National Instrument 43-101: Technical Report on the Queensway Gold Project, Newfoundland, Canada can be found at the company's website, <https://newfoundgold.ca/>

The various New Found Gold Corp. management, protection and related plans can be found in Appendix 5.

vii) Baseline Studies and a discussion on NFG environmental Team and COR certification.

NFG has been actively engaged in conducting baseline studies in the designated area since 2020, with plans for ongoing baseline work extending through 2024. These proposed baseline investigations are of utmost importance in the endeavor to comprehensively document the existing conditions at the Queensway location. These studies serve as the foundation for future baseline study planning and play a pivotal role in informing the environmental assessment processes associated with this project.

The work conducted thus far encompass a diverse range of studies including work related to freshwater fish and fish habitat, hydrology and water/sediment characteristics, vegetation and wetland ecosystems, air quality, noise pollution, and light levels. Additionally, the studies have addressed ecological land classification (ELC) and investigations into archaeology and historic resources, among others. Some results of these studies are provided in Appendix 4.

NFG has recently been awarded the Certificate of Recognition (COR) certification, a highly regarded occupational health and safety certification program. COR is nationally registered, trademark and endorsed by the Canadian Federation of Construction Safety Associations (CFCSA). This certification is presented to companies in the industry that have successfully demonstrated compliance with national standards for occupational health and safety management systems. The COR program is specifically tailored to aid organizations in enhancing their health and safety management systems, fostering a comprehensive understanding of both employer and worker rights and responsibilities, ultimately leading to a reduction in workplace incidents, injuries, and fatalities. This knowledge not only helps in averting liabilities but also ensures due diligence. By actively engaging in the COR program, both employers and employees gain a heightened awareness of the imperative role that injury prevention plays in their daily business operations and work routines.

5.0 Approval of the Undertaking:

Approvals currently in place:

The project currently has all the necessary approvals in place to conduct exploration at QWN. Current permitting includes a minimum of 16 permits in place containing more than 560 conditions placed upon planned exploration activities. A more complete listing of the current permits can be found in Appendix 3 with a digital copy of project permits attached for reference.

1) Mineral Exploration Approvals – Diamond Drilling, Seismic, and Trenching

Government of Newfoundland and Labrador. Department of Industry, Energy, and Technology, Mineral Lands Division.

Permits: E210699 (Drilling), E210649 (Seismic & Keats Trench), E210588 (Barge Drilling), E230240 (2D Seismic Line), and E230212 (Glaciology Test Pits).

2) Section 39 and Section 48 Permits – Development & Alter Waterbody

Government of Newfoundland and Labrador. Department of Environment and Climate Change, Water Resources Management Division

Permits: PRO12988-2023 (Seismic & Keats Trench), PRO11547-2020 (QWN Mineral Exploration), ALT12387-2022 (Barge Drill Ramp Access).

3) Environmental Registration Documents

Government of Newfoundland and Labrador. Department of Environment and Climate Change,

Documents: EA 2106 (QWN Drilling and EA 2214 (QWN Seismic Cut Lines and Keats Trench) 4)

Forestry - Fire Season Operating Permit

Forest Service of Newfoundland and Labrador

5) Permit for Development – Protected Roads

Government of Newfoundland and Labrador. Digital Government and Service NL

Permit # 248883

6) Temporary Vehicular Access Permit – T’Railway Provincial Park

Government of Newfoundland and Labrador. Department of Tourism, Culture, Arts and Recreation, Parks NL.

7) Town of Appleton Development Permits

The Company monthly receives development permits from the Town of Appleton when working within their municipal planning zone.

6.0 Schedule

The company began its diamond drilling campaign in August 2020 and seeks to continue the current drill program started in 2020 and continue into 2024 and likely for the next 3-5 years and beyond at various levels of intensity. A decision to continue beyond 2024 cannot be made except as a projection since such a decision is affected by many factors including exploration success, stock markets, and the price of the underlying commodity (gold). At present there is no plan to stop drilling after the 500,000 metres as initially targeted. Instead, drilling has defined numerous new target areas that require more drilling to better define and bring the project towards a maiden mineral resource estimate and best evaluate the economics of future mineral development potential. Results from the 2023 seismic program should assist NFG in better defining the best gold targets and assist with reducing unnecessary holes.

7.0 Funding

Funding for the exploration activities and associated permitting requirements will be provided directly from the proponent with a 2023 budget of \$89.44 million and a proposed 2024 budget with a similar scale already available from working capital. NFG has spent \$183.4 million since 2020, with over \$3.5 million on progressive remediation efforts.

Definition of gold resources will involve mineral exploration activities such as prospecting, geological mapping, geophysical surveys, both ground and airborne, and geochemical surveys followed by trenching and core drilling to test targets generated by the exploration. NFG wishes to establish the best policies for the environment, the local population, and finally its shareholders.

8.0 Limitations

This Environmental Registration document has been prepared by New Found Gold Corp. personnel who have extensive knowledge of mineral exploration, project development and the environmental concerns related to mineral exploration. Many of the personnel have been involved with similar exploration programs in this province and other areas of Canada and have been involved with the permitting and ongoing environmental concerns with these programs from day one.

Respectfully Submitted by,

Greg Matheson

Greg Matheson, P.Geol.

COO, New Found Gold Corporation

October 20, 2023

Jared Saunders

Jared Saunder, PhD, CRSP, EP

Director of Environment & Regulatory Affairs

October 20, 2023

Michael B. Regular

Michael Regular, P.Geol.

Lands Administration, Assessments, & Permitting

October 20, 2023

Appendix 1

List of New Found Gold Mineral Licences

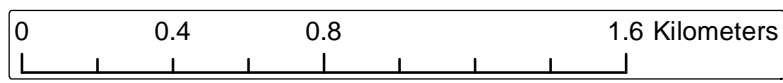
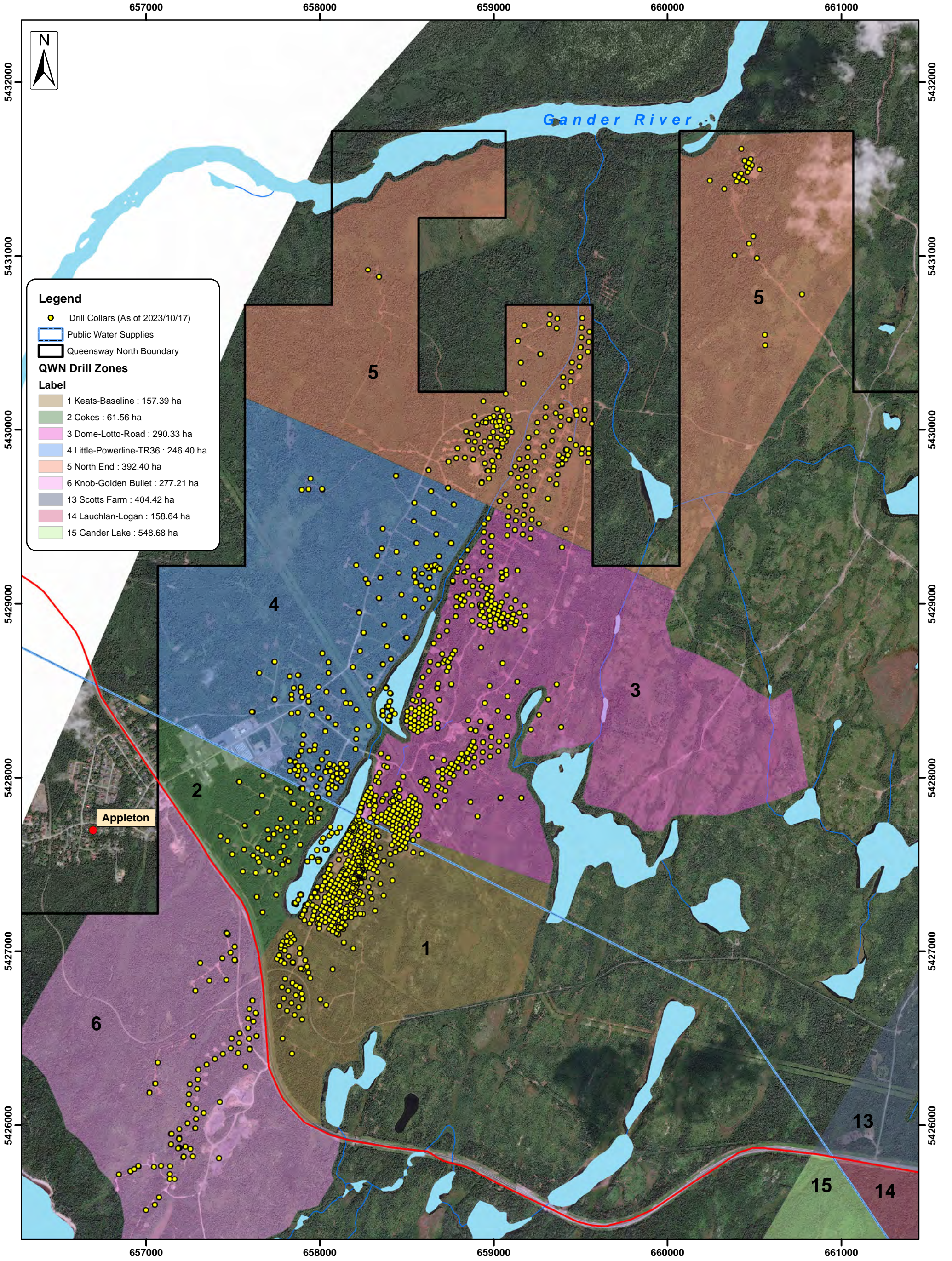
Licence	File	Holder	Location	Licence Area	Region Code	NTS Map Sheets	# Claims	Issued Date	Renewal Date	Area (km ²)	Area (ha)
New Found Gold Mineral Licences included in this Environmental Registration											
006821M	7743525	New Found Gold Corp.	Gander River, Central NL	Queensway North	JBP	02E02	2	1999-05-17	2024-05-17	0.50	50
007984M	7743250	New Found Gold Corp.	Glenwood, Central NL	Queensway North	JBP	02D15,02E02	50	1998-11-13	2023-11-13	12.50	1250
022216M	7754481	New Found Gold Corp.	Glenwood, Central NL	Queensway North	AFZ	02D15	6	2014-06-12	2024-06-12	1.50	150
022236M	7754507	New Found Gold Corp.	Southwest Gander River, Central NL	Queensway South	QWS	02D11	5	2014-06-12	2024-06-12	1.25	125
022260M	7754531	New Found Gold Corp.	Southwest Gander River, Central NL	Queensway South	QWS	02D11	1	2014-06-13	2024-06-13	0.25	25
022342M	7754577	New Found Gold Corp.	Southwest Gander River, Central NL	Queensway South	QWS	02D11	1	2014-08-25	2024-08-25	0.25	25
022491M	7754681	New Found Gold Corp.	Gander Lake Area, Central NL	Queensway North	JBP	02D15	12	2014-11-06	2024-11-06	3.00	300
023239M	7755127	New Found Gold Corp.	Pauls Pond, Central NL	Queensway South	QWS	02D11	2	2015-08-12	2025-08-12	0.50	50
023495M	7755327	New Found Gold Corp.	Northwest Gander River, Central NL	Queensway South	QWS	02D11	5	2015-11-19	2025-11-19	1.25	125
023498M	7755330	New Found Gold Corp.	Northwest Gander River, Central NL	Queensway South	QWS	02D11	8	2015-11-19	2025-11-19	2.00	200
023720M	7744480	New Found Gold Corp.	Glenwood, Central NL	Queensway North	JBP	02D15,02E02	4	2001-12-31	2024-01-01	1.00	100
023721M	7744480	New Found Gold Corp.	Glenwood, Central NL	Queensway North	JBP	02D15	2	2001-12-31	2024-01-01	0.50	50
023804M	7744192	New Found Gold Corp.	Glenwood, Central NL	Queensway North	AFZ	02D15	12	2001-02-19	2024-02-19	3.00	300
023860M	7755566	New Found Gold Corp.	Joe Batts Brook, Central NL	Queensway North	JBP	02E02	11	2016-04-07	2026-04-07	2.75	275
023861M	7755567	New Found Gold Corp.	Joe Batts Pond, Central NL	Queensway North	JBP	02D15,02E02	16	2016-04-07	2026-04-07	4.00	400
023862M	7755568	New Found Gold Corp.	Joe Batts Brook, Central NL	Queensway North	JBP	02E02	4	2016-04-07	2026-04-07	1.00	100
023863M	7755569	New Found Gold Corp.	Joe Batts Brook, Central NL	Queensway North	JBP	02D15,02E02	11	2016-04-07	2026-04-07	2.75	275
023864M	7755570	New Found Gold Corp.	Joe Batts Brook, Central NL	Queensway North	JBP	02E02	3	2016-04-07	2026-04-07	0.75	75
023866M	7755572	New Found Gold Corp.	Joe Batts Brook, Central NL	Queensway North	JBP	02D15	4	2016-04-07	2026-04-07	1.00	100
023874M	7755580	New Found Gold Corp.	Joe Batts Brook, Central NL	Queensway North	JBP	02D15,02E02	8	2016-04-11	2026-04-13	2.00	200
023875M	7755581	New Found Gold Corp.	Joe Batts Pond, Central NL	Queensway North	JBP	02D15	3	2016-04-12	2026-04-13	0.75	75
023881M	7755586	New Found Gold Corp.	Joe Batts Brook, Central NL	Queensway North	JBP	02E02	7	2016-04-21	2026-04-21	1.75	175
023916M	7755618	New Found Gold Corp.	Gander Lake Area, Central NL	Queensway North	JBP	02D15	4	2016-05-05	2026-05-05	1.00	100
023962M	7755652	New Found Gold Corp.	The Outflow, Central NL	Queensway North	AFZ	02D15	9	2016-05-19	2026-05-19	2.25	225
023987M	7755678	New Found Gold Corp.	Joe Batts Pond Area, Central NL	Queensway North	JBP	02D15,02E02	11	2016-06-07	2026-06-08	2.75	275
024026M	7755714	New Found Gold Corp.	Joe Batts Pond Area, Central NL	Queensway North	JBP	02D15	6	2016-06-30	2026-06-30	1.50	150
024031M	7755719	New Found Gold Corp.	Joe Batts Pond Area, Central NL	Queensway North	JBP	02D15,02E02	6	2016-06-30	2026-06-30	1.50	150
024136M	7755800	New Found Gold Corp.	Gander River Area, Central NL	Queensway North	JBP	02E02	25	2016-09-13	2026-09-14	6.25	625
024138M	7755801	New Found Gold Corp.	Gander Lake, Central NL	Queensway North	AFZ	02D15	21	2016-09-15	2026-09-15	5.25	525
024139M	7755802	New Found Gold Corp.	Gander Lake, Central NL	Queensway North	JBP	02D15	30	2016-09-15	2026-09-15	7.50	750
024140M	7755803	New Found Gold Corp.	Joe Batts Pond, Central NL	Queensway North	JBP	02D15	2	2016-09-15	2026-09-15	0.50	50
024141M	7755804	New Found Gold Corp.	Joe Batts Pond Area, Central NL	Queensway North	JBP	02D15	2	2016-09-15	2026-09-15	0.50	50
024264M	7755916	New Found Gold Corp.	Joe Batts Pond Area, Central NL	Queensway North	JBP	02D15	4	2016-10-24	2026-10-26	1.00	100
024265M	7755917	New Found Gold Corp.	Appleton, Central NL	Queensway North	JBP	02D15	12	2016-10-24	2026-10-26	3.00	300
024266M	7755918	New Found Gold Corp.	Joe Batts Pond, Central NL	Queensway North	JBP	02D15,02E02	128	2016-10-24	2026-10-26	32.00	3200
024268M	7755920	New Found Gold Corp.	Millers Brook, Central NL	Queensway North	JBP	02E02	56	2016-10-24	2026-10-26	14.00	1400
024270M	7755922	New Found Gold Corp.	Island Pond, Central NL	Queensway North	TIP	02E02	107	2016-10-24	2026-10-26	26.75	2675
024274M	7755926	New Found Gold Corp.	Twin Ponds, Central NL	Queensway North	TIP	02E02	77	2016-10-24	2026-10-26	19.25	1925
024435M	7756066	New Found Gold Corp.	Greenwood Pond, Central NL	Queensway South	QWS	02D11	7	2016-11-21	2026-11-23	1.75	175
024436M	7756067	New Found Gold Corp.	Greenwood Pond, Central NL	Queensway South	QWS	02D11	3	2016-11-21	2026-11-23	0.75	75
024557M	7756131	New Found Gold Corp.	Bear Pond, Central NL	Queensway South	QWS	02D06,02D11	250	2016-12-12	2026-12-14	62.50	6250
024558M	7756132	New Found Gold Corp.	Great Gull River, Central NL	Queensway South	QWS	02D06,02D11	239	2016-12-12	2026-12-14	59.75	5975
024559M	7756133	New Found Gold Corp.	Northwest Gander River, Central NL	Queensway South	QWS	02D11,02D14	256	2016-12-12	2026-12-14	64.00	6400
024560M	7756134	New Found Gold Corp.	Careless Brook, Central NL	Queensway South	QWS	02D14,02D15	121	2016-12-12	2026-12-14	30.25	3025
024561M	7756135	New Found Gold Corp.	Eastern Pond, Central NL	Queensway South	QWS	02D06,02D11	256	2016-12-12	2026-12-14	64.00	6400
024562M	7756136	New Found Gold Corp.	Hussey Pond, Central NL	Queensway South	QWS	02D11,02D14	241	2016-12-12	2026-12-14	60.25	6025
024563M	7756137	New Found Gold Corp.	Eastern Pond, Central NL	Queensway South	QWS	02D06,02D11	236	2016-12-12	2026-12-14	59.00	5900
024565M	7756139	New Found Gold Corp.	Gander Lake, Central NL	Queensway South	QWS	02D14,02D15	12	2016-12-12	2026-12-14	3.00	300
024566M	7756140	New Found Gold Corp.	Gander Lake, Central NL	Queensway South	QWS	02D15	125	2016-12-12	2026-12-14	31.25	3125

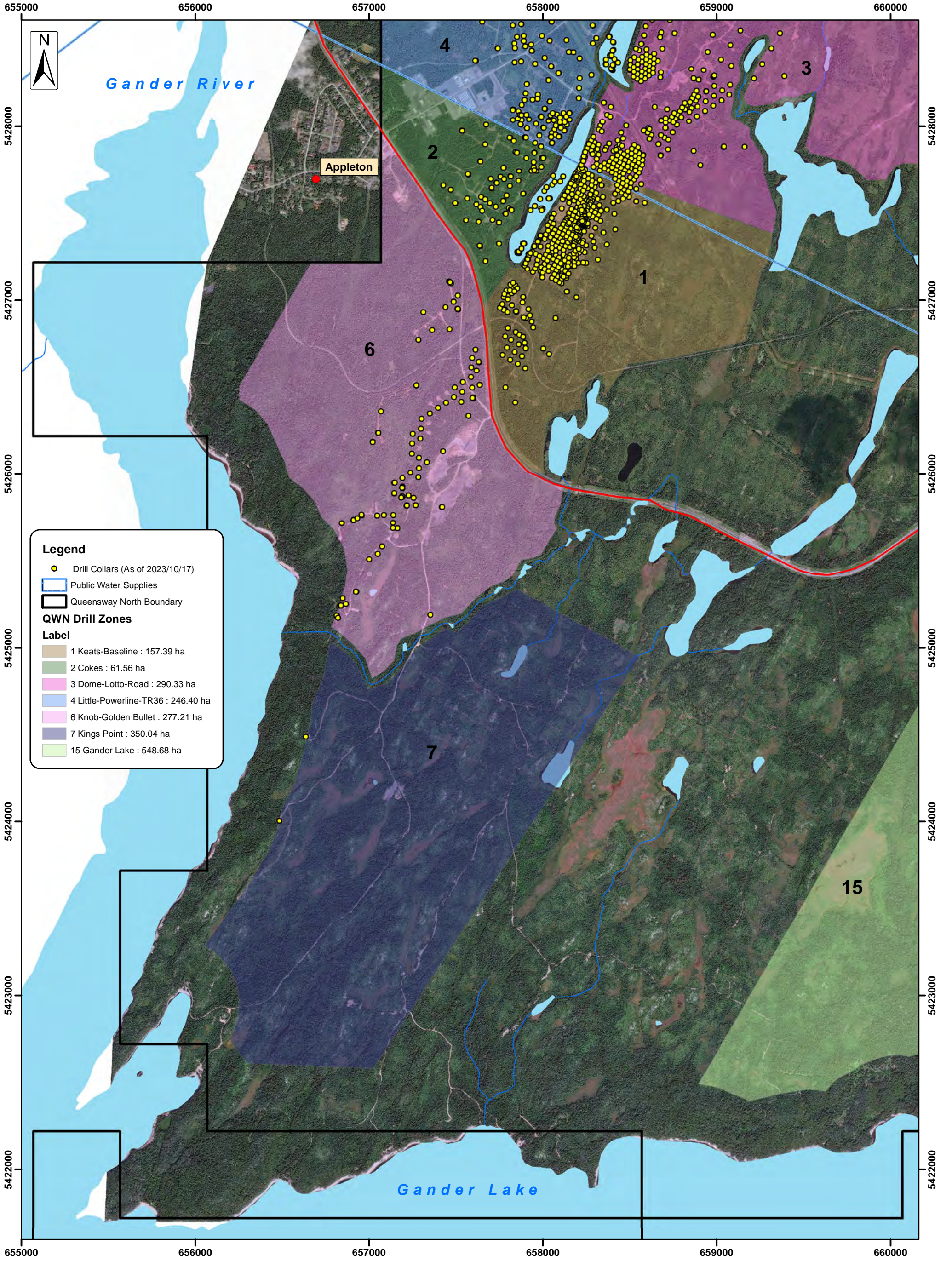
Licence	File	Holder	Location	Licence Area	Region Code	NTS Map Sheets	# Claims	Issued Date	Renewal Date	Area (km ²)	Area (ha)
New Found Gold Mineral Licences included in this Environmental Registration											
024567M	7756141	New Found Gold Corp.	Gander Lake, Central NL	Queensway South	QWS	02D14,02D15	106	2016-12-12	2026-12-14	26.50	2650
024568M	7756142	New Found Gold Corp.	Birch Pond, Central NL	Queensway South	QWS	02D11	254	2016-12-12	2026-12-14	63.50	6350
024569M	7756143	New Found Gold Corp.	Southwest Gander River, Central NL	Queensway South	QWS	02D14,02D15	221	2016-12-12	2026-12-14	55.25	5525
024570M	7756144	New Found Gold Corp.	Dennis Brook, Central NL	Queensway South	QWS	02D11	117	2016-12-12	2026-12-14	29.25	2925
024571M	7756145	New Found Gold Corp.	Winter Brook, Central NL	Queensway South	QWS	02D10,02D11,02D14,02D15	153	2016-12-12	2026-12-14	38.25	3825
024997M	7756477	New Found Gold Corp.	Glenwood Area, Central NL	Queensway North	JBP	02D15	21	2017-04-27	2027-04-27	5.25	525
025008M	7756494	New Found Gold Corp.	Gander Lake, Central NL	Queensway North	JBP	02D15	13	2017-05-04	2027-05-04	3.25	325
025766M	7756130	New Found Gold Corp.	Pauls Pond, Central NL	Queensway South	QWS	02D11,02D14	163	2016-12-12	2026-12-14	40.75	4075
026074M	7757373	New Found Gold Corp.	Joe Batts Brook, Central NL	Queensway North	JBP	02E02	3	2018-05-31	2028-05-31	0.75	75
030710M	7758172	New Found Gold Corp.	Little Dead Wolf Pond	Queensway South	QWS	02D15	144	2020-05-02	2025-05-02	36.00	3600
030714M	7758175	New Found Gold Corp.	King's Point, Gander Lake	Queensway North	JBP	02D15	8	2020-05-02	2025-05-02	2.00	200
030716M	7758177	New Found Gold Corp.	Third Berry Hill Pond	Queensway South	QWS	02D06	224	2020-05-02	2025-05-02	56.00	5600
030722M	7758183	New Found Gold Corp.	Hunt's Pond	Queensway South	QWS	02D15	149	2020-05-02	2025-05-02	37.25	3725
030726M	7758186	New Found Gold Corp.	Joe's Feeder Cove	Queensway South	QWS	02D15	5	2020-05-02	2025-05-02	1.25	125
030727M	7758187	New Found Gold Corp.	Dead Wolf Brook	Queensway South	QWS	02D10,02D15	195	2020-05-02	2025-05-02	48.75	4875
030733M	7758190	New Found Gold Corp.	Rocky Brook	Queensway South	QWS	02D06,02D11	173	2020-05-02	2025-05-02	43.25	4325
030737M	7758194	New Found Gold Corp.	Caribou Lake	Queensway South	QWS	02D10,02D11	247	2020-05-02	2025-05-02	61.75	6175
030739M	7758196	New Found Gold Corp.	Great Gull River	Queensway South	QWS	02D06	224	2020-05-02	2025-05-02	56.00	5600
030740M	7758198	New Found Gold Corp.	Ribbon Ponds	Queensway South	QWS	02D06	1	2020-05-02	2025-05-02	0.25	25
030741M	7758197	New Found Gold Corp.	Southwest Gander River Cove	Queensway South	QWS	02D15	2	2020-05-02	2025-05-02	0.50	50
030742M	7758199	New Found Gold Corp.	Steeles Brook	Queensway South	QWS	02D06	32	2020-05-02	2025-05-02	8.00	800
030745M	7758202	New Found Gold Corp.	Dead Wolf Brook	Queensway South	QWS	02D10,02D11	101	2020-05-02	2025-05-02	25.25	2525
030746M	7758203	New Found Gold Corp.	Southwest Islands View	Queensway South	QWS	02D15	3	2020-05-02	2025-05-02	0.75	75
030747M	7758204	New Found Gold Corp.	Owl Pond	Queensway South	QWS	02D06	37	2020-05-02	2025-05-02	9.25	925
030748M	7758205	New Found Gold Corp.	Southwest Pond	Queensway South	QWS	02D11	140	2020-05-02	2025-05-02	35.00	3500
030752M	7758209	New Found Gold Corp.	Miguel's Lake	Queensway South	QWS	02D06,02D11	78	2020-05-02	2025-05-02	19.50	1950
030753M	7758210	New Found Gold Corp.	Gander Lake	Queensway South	QWS	02D15	3	2020-05-02	2025-05-02	0.75	75
030754M	7758211	New Found Gold Corp.	Little Gander Lake	Queensway South	QWS	02D06	172	2020-05-02	2025-05-02	43.00	4300
030755M	7758212	New Found Gold Corp.	Rocky Brook	Queensway South	QWS	02D11	30	2020-05-02	2025-05-02	7.50	750
030756M	7758214	New Found Gold Corp.	Southwest Pond	Queensway South	QWS	02D10,02D11	88	2020-05-02	2025-05-02	22.00	2200
030763M	7758220	New Found Gold Corp.	Rocky Brook	Queensway South	QWS	02D06,02D11	45	2020-05-02	2025-05-02	11.25	1125
030765M	7758331	New Found Gold Corp.	Berry Hill Brook	Queensway South	QWS	02D06	124	2020-05-02	2025-05-02	31.00	3100
030768M	7758332	New Found Gold Corp.	Gander Lake Prime	Queensway South	QWS	02D15	149	2020-05-02	2025-05-02	37.25	3725
030771M	7758224	New Found Gold Corp.	Northwest Gander River	Queensway South	QWS	02D11,02D14	37	2020-05-02	2025-05-02	9.25	925
030775M	7758227	New Found Gold Corp.	Bellman's Pond	Queensway North	BLP	02E02	1	2020-05-02	2025-05-02	0.25	25
030777M	7758333	New Found Gold Corp.	Little Rocky Pond, Gander River	Queensway North	LRB	02E02	114	2020-05-02	2025-05-02	28.50	2850
030783M	7758234	New Found Gold Corp.	Little Dead Wolf Brook	Queensway South	QWS	02D10,02D15	41	2020-05-02	2025-05-02	10.25	1025
035047M	7761989	Aidan O'Neil	Ten Mile-Duder Lake	Queensway North	TML	02E02, 02E07	209	2022-09-29	2027-09-29	52.25	5225
035048M	7761990	Suraj Amarnani	Twin Ponds	Queensway North	TIP	02E02	42	2022-09-29	2027-09-29	10.5	1050
035050M	7761992	Josh Vann	Ten Mile Lake	Queensway North	TML	02E02, 02E07	2	2022-09-29	2027-09-29	0.5	50
035087M	7762023	New Found Gold Corp.	Gander Lake Prime	Queensway South	QWS	02D15	2	2022-10-13	2027-10-13	0.50	50
035197M	7762113	Aidan O'Neil	Penny's Pond	Queensway North	PNP	02E02	130	2022-11-10	2027-11-10	32.5	3250
035198M	7762114	Suraj Amarnani	Fourth Pond	Queensway North	JBP	02E02	168	2022-11-10	2027-11-10	42	4200
035209M	7762125	New Found Gold Corp.	Penny's Pond	Queensway North	PNP	02E02	2	2022-11-10	2027-11-10	0.50	50
035338M	7762204	New Found Gold Corp.	Gillingham's Pond	Queensway South	QWS	02D15	53	2023-01-05	2028-01-05	13.25	1325
035681M	7762462	New Found Gold Corp.	The Outflow, Central NL	Queensway North	JBP	02D15	4	2023-03-16	2028-03-16	1.00	100
036670M	7763142	Alicia Moning	Careless Brook, Central NL	Queensway South	QWS	02D15	6			1.50	150
TOTALS		As of September 30, 2023	Licences	96			6659			1664.75	166475.00

Appendix 2

Project Review Maps

Map 1	Appleton Fault Zone North – Planned Exploration	1:20,000
Map 2	Appleton Fault Zone South – Planned Exploration	1:20,000
Map 3	Joe Batts Pond Fault Zone S – Planned Exploration	1:20,000
Map 4	Joe Batts Pond Fault Zone – Planned Exploration	1:20,000
Map 5	Joe Batts Pond Fault Zone N – Planned Exploration	1:20,000





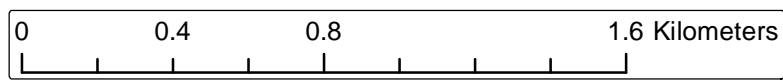
Legend

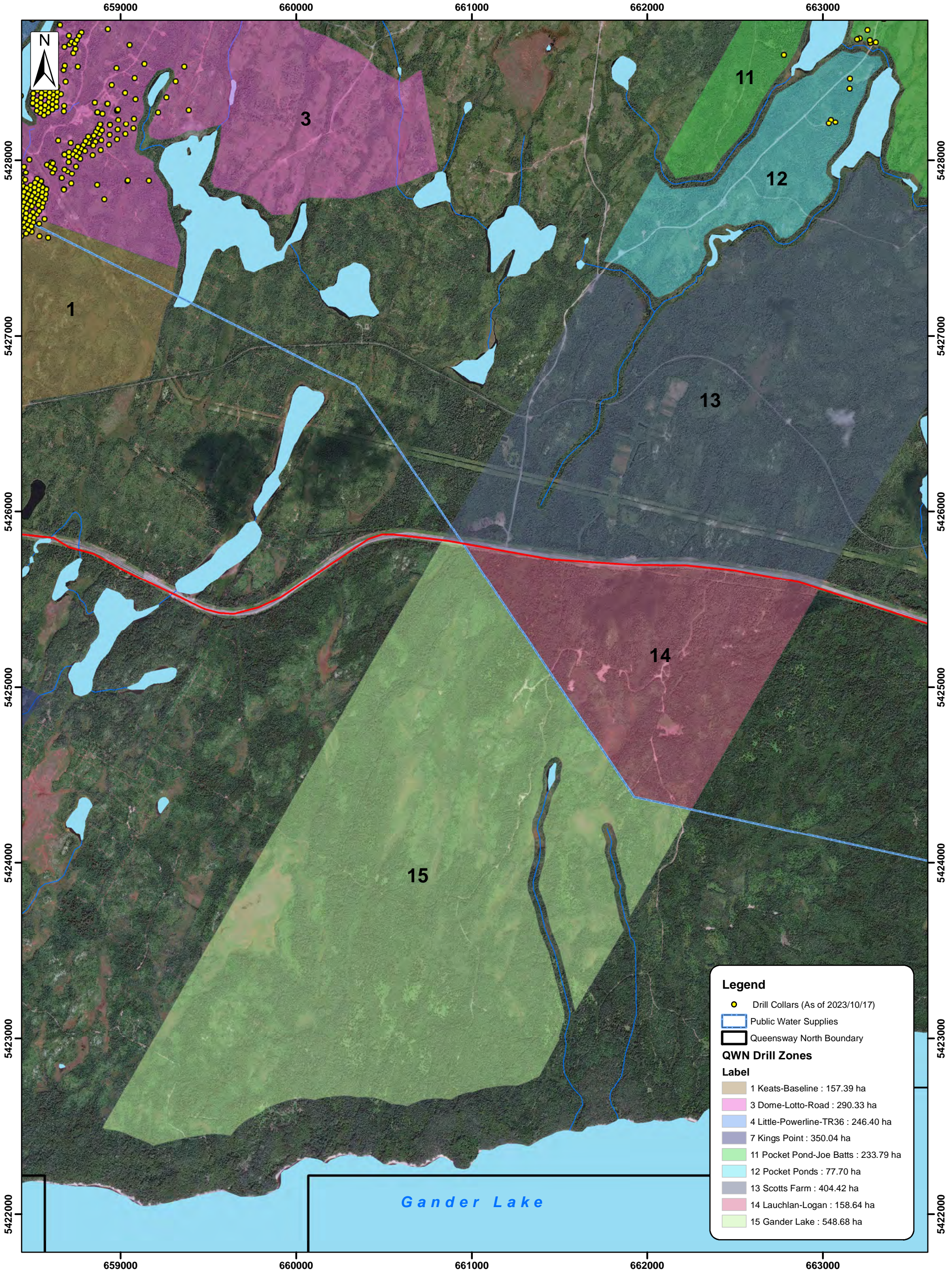
- Drill Collars (As of 2023/10/17)
- Public Water Supplies
- Queensway North Boundary

QWN Drill Zones

Label

- 1 Keats-Baseline : 157.39 ha
- 2 Cokes : 61.56 ha
- 3 Dome-Lotto-Road : 290.33 ha
- 4 Little-Powerline-TR36 : 246.40 ha
- 6 Knob-Golden Bullet : 277.21 ha
- 7 Kings Point : 350.04 ha
- 15 Gander Lake : 548.68 ha





Legend

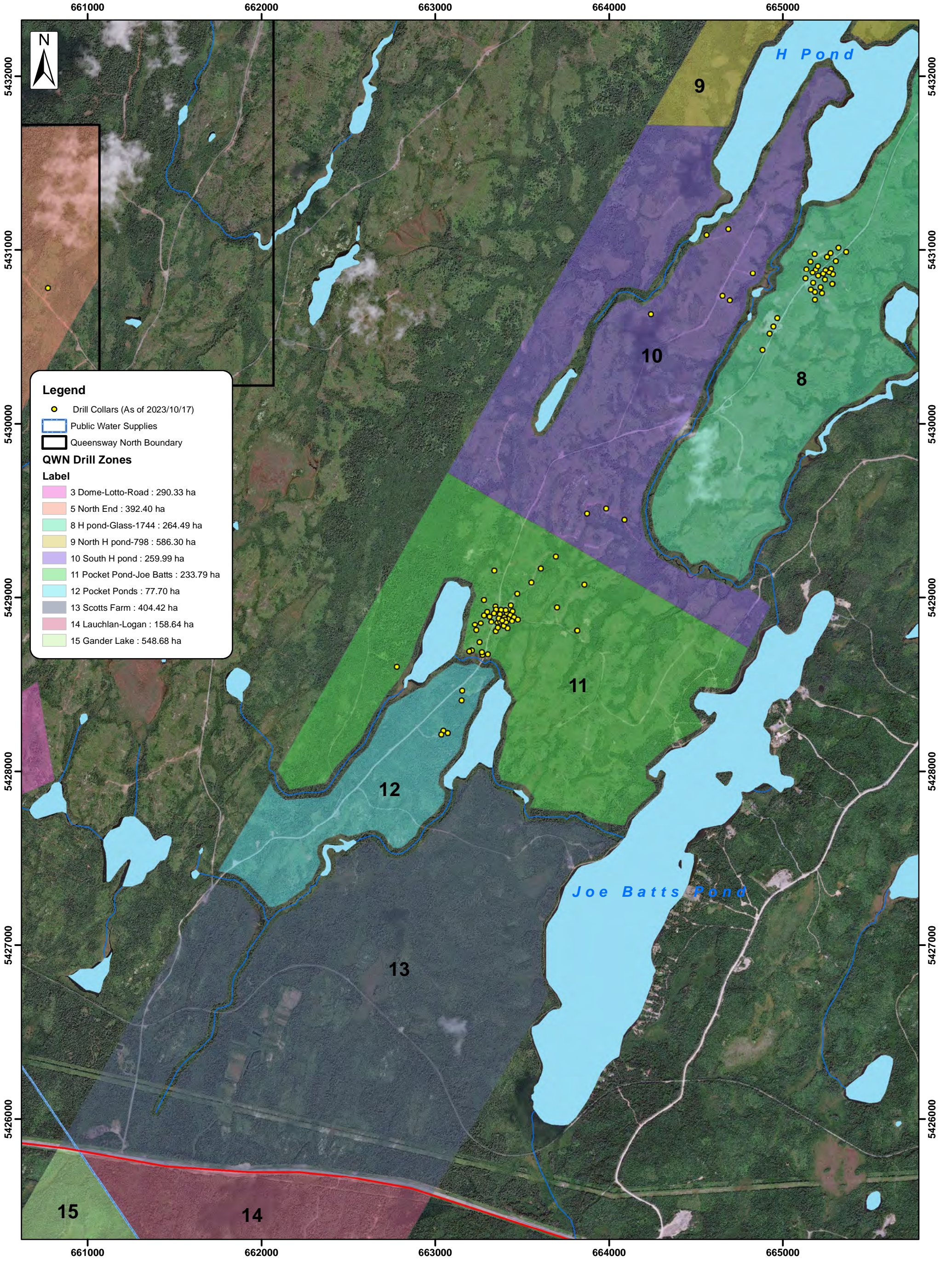
- Drill Collars (As of 2023/10/17)
- Public Water Supplies
- Queensway North Boundary

QWN Drill Zones

Label

	1 Keats-Baseline : 157.39 ha
	3 Dome-Lotto-Road : 290.33 ha
	4 Little-Powerline-TR36 : 246.40 ha
	7 Kings Point : 350.04 ha
	11 Pocket Pond-Joe Batts : 233.79 ha
	12 Pocket Ponds : 77.70 ha
	13 Scotts Farm : 404.42 ha
	14 Lauchlan-Logan : 158.64 ha
	15 Gander Lake : 548.68 ha





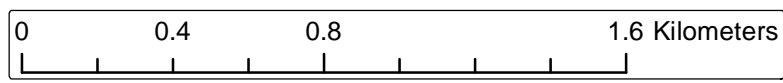
Legend

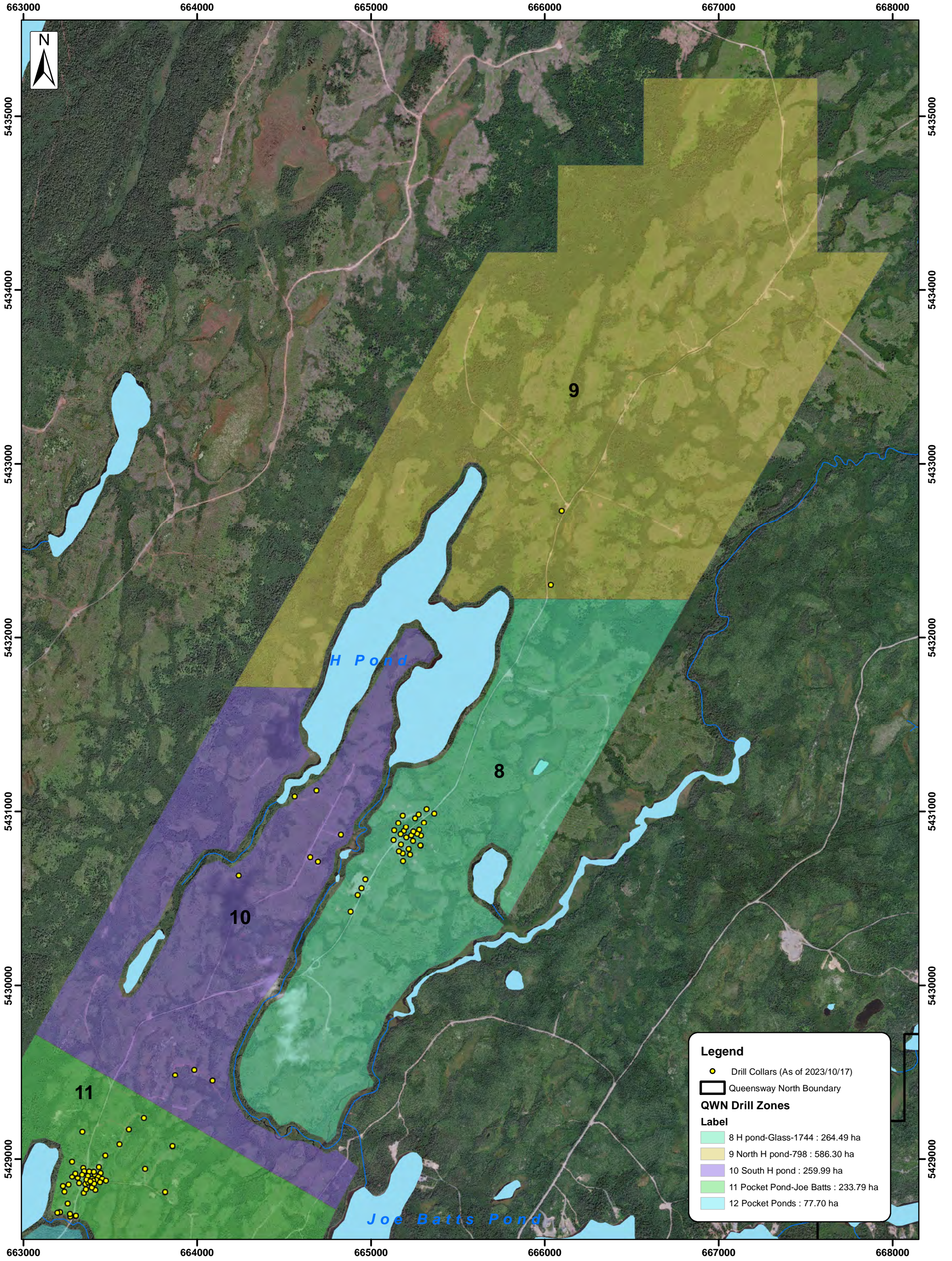
- Drill Collars (As of 2023/10/17)
- Public Water Supplies
- Queensway North Boundary

QWN Drill Zones

Label

- 3 Dome-Lotto-Road : 290.33 ha
- 5 North End : 392.40 ha
- 8 H pond-Glass-1744 : 264.49 ha
- 9 North H pond-798 : 586.30 ha
- 10 South H pond : 259.99 ha
- 11 Pocket Pond-Joe Batts : 233.79 ha
- 12 Pocket Ponds : 77.70 ha
- 13 Scotts Farm : 404.42 ha
- 14 Lauchlan-Logan : 158.64 ha
- 15 Gander Lake : 548.68 ha





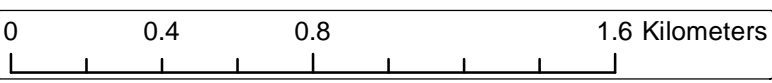
Legend

- Drill Collars (As of 2023/10/17)
- ▭ Queensway North Boundary

QWN Drill Zones

Label

- 8 H pond-Glass-1744 : 264.49 ha
- 9 North H pond-798 : 586.30 ha
- 10 South H pond : 259.99 ha
- 11 Pocket Pond-Joe Batts : 233.79 ha
- 12 Pocket Ponds : 77.70 ha



Appendix 3

Project Permits and Approvals

- 1) Mineral Exploration Approvals – Diamond Drilling, Seismic, and Trenching
 - E210699 (Drilling)
 - E210649 (Seismic & Keats Trench)
 - E210588 (Barge Drilling)
 - E230240 (2D Seismic Line)
 - E230212 (Glaciology Test Pits)
- 2) Section 39 and Section 48 Permits – Development & Alter Waterbody
 - PRO12988-2023 (Seismic & Keats Trench)
 - PRO11547-2020 (QWN Mineral Exploration)
 - ALT12387-2022 (Barge Drill Ramp Access)
- 3) Environmental Registration Documents
 - ER2106 (QWN Drilling)
<https://www.gov.nl.ca/ecc/projects/project-2106/>
 - ER2214 (QWN Seismic Cut Lines and Keats Trench)
<https://www.gov.nl.ca/ecc/projects/project-2214/>
- 4) Forestry - Fire Season Operating Permit
- 5) Permit for Development – Protected Roads
 - Permit # 248883
- 6) Temporary Vehicular Access Permit – T’Railway Provincial Park

Appendix 4

Project Baseline Studies

Gemtec QWN Hydrology Report 2023

Gemtec QWN Hydrogeology Report 2023

Gemtec QWN Species at Risk Locations Map 2022

Appendix 5

Project ERP, WMP, WEP, and other Plans

NFG Environmental Protection Plan 2021

NFG Spill Response Plan 2023

NFG Waste Management Plan 2021

NFG Women's Employment Plan 2021

TROIX Spill Response Training 2023