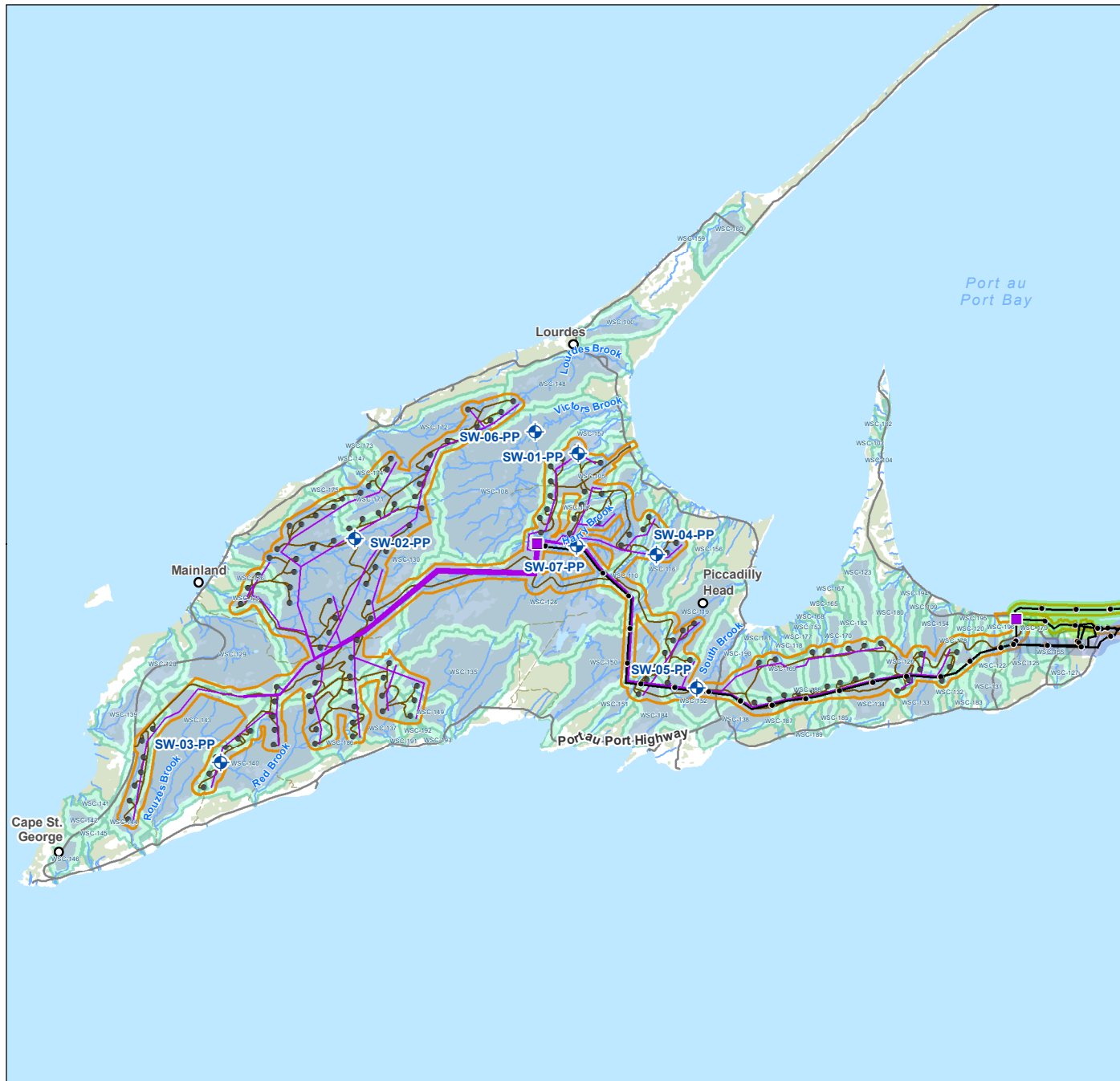


Appendix ECC57-A

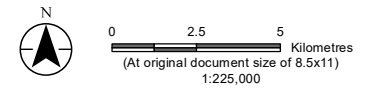
Mapbook - Proposed Surface Water Monitoring Sampling Stations

Project Nuji'o'qonik: Amendment to the Environmental Impact Statement

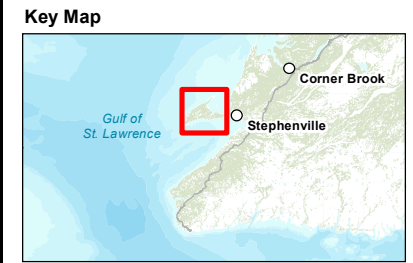
V:\1214\active\12141723303_data\gis_cad\gis_data\mapping\mxd\general\IEIS_Amendment\CH14_ECCC121418050_071_appendix\ECCC57A_SW_Sample_Stations_mapbook.mxd
 Revised: 2024-01-26 By: mblackwood



- Surface Water Sampling Station
- Watershed
- Proposed Project Features**
 - Turbine Location
 - Substation
 - Project Area
 - Transmission Line 230 kV
- Other Features**
 - Road / Highway
 - Resource Road / Trail
 - Watercourse
 - Waterbody
 - Forested Area
- Port au Port Interconnection**
 - Proposed Route
 - Alternate Route
 - Collector Line
 - Access Road



- Notes**
1. Coordinate System: NAD 1983 CSRS UTM Zone 21N
 2. Data Sources: Stantec; World Energy GH2; NL ECC Water Resources Management Division; NL Fisheries, Forestry and Agriculture; NRCan CanVec; OpenStreetMap
 3. Background: NRCan CanVec

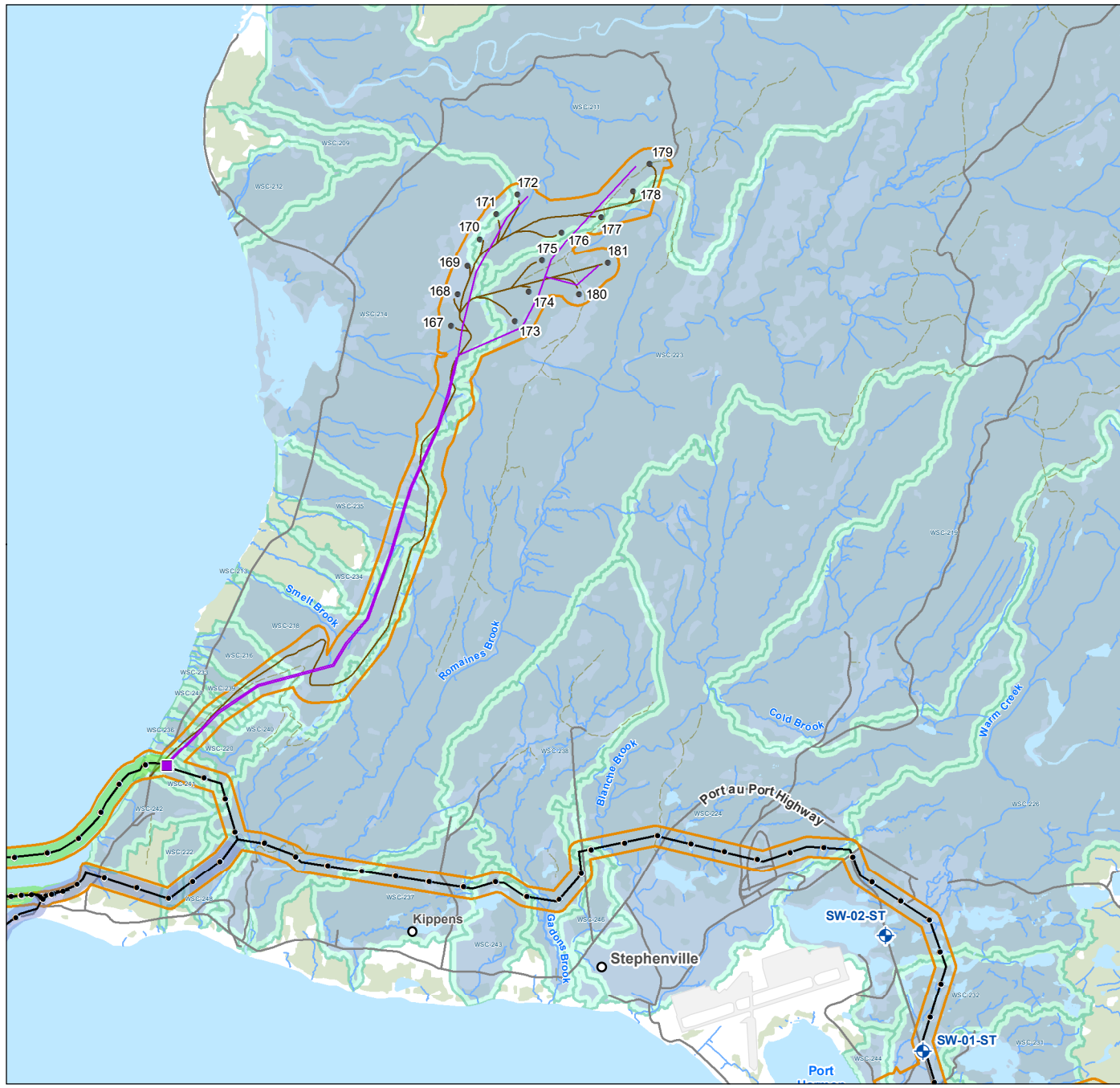


<i>Project Location</i> Stephenville NL	<i>Revised by AC on</i> 2024-01-18 <i>OR by AW on</i> 2024-01-18
<i>Client/Project</i> World Energy GH2 Project Nujjo'qonik	121418050_071
<i>Figure No.</i> ECCC57-A	Page 1 of 4

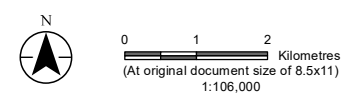
Proposed Surface Water Monitoring Sampling Stations

Disclaimer: This document has been prepared based on information provided by others as cited in the Notes section. Stantec has not verified the accuracy and/or completeness of this information and shall not be responsible for any errors or omissions which may be incorporated herein as a result. Stantec assumes no responsibility for data supplied in electronic format, and the recipient accepts full responsibility for verifying the accuracy and completeness of the data.

V:\1214\active\12141723303_data\gis_data\mapping\mxd\general\IEIS_Amendment\CH14_ECCC121418050_071_appendix\ECCC57A_SW_Sample_Stations_mapbook.mxd
 Revised: 2024-01-26 By: mblackwood



- Surface Water Sampling Station
- Watershed
- Proposed Project Features**
 - Turbine Location
 - Substation
 - Project Area
 - Transmission Line 230 kV
- Port au Port Interconnection**
 - Proposed Route
 - Alternate Route
 - Collector Line
 - Access Road
- Other Features**
 - Road / Highway
 - Resource Road / Trail
 - Watercourse
 - Waterbody
 - Forested Area



- Notes**
1. Coordinate System: NAD 1983 CSRS UTM Zone 21N
 2. Data Sources: Stantec; World Energy GH2; NL ECC Water Resources Management Division; NL Fisheries, Forestry and Agriculture; NRCan CanVec; OpenStreetMap
 3. Background: NRCan CanVec

Key Map



Project Location: Stephenville, NL
 Revised by AC on 2024-01-18
 OR by AW on 2024-01-18

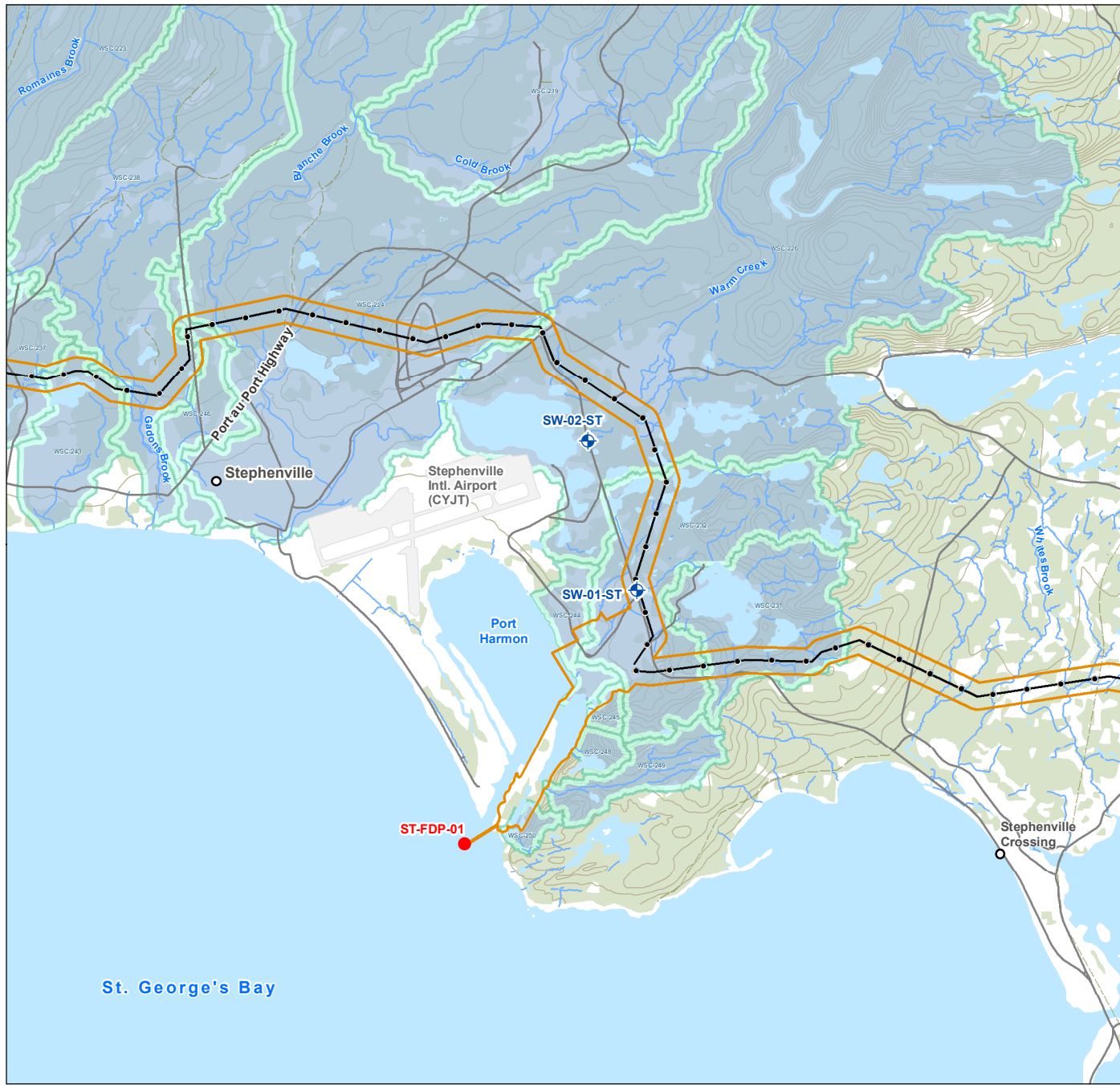
Client/Project: World Energy GH2, Project Nujjo'qonik
 121418050_071

Figure No.: **ECCC57-A**
 Page 2 of 4

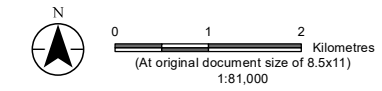
Proposed Surface Water Monitoring Sampling Stations

Disclaimer: This document has been prepared based on information provided by others as cited in the Notes section. Stantec has not verified the accuracy and/or completeness of this information and shall not be responsible for any errors or omissions which may be incorporated herein as a result. Stantec assumes no responsibility for data supplied in electronic format, and the recipient accepts full responsibility for verifying the accuracy and completeness of the data.

V:\1214\active\12141723303_data\gis_data\gis_cad\gis_data\mapping\mxd\general\IEIS_Amendment\CH14_ECCC\121418050_071_appendix\ECCC57A_SW_Sample_Stations_mapbook.mxd
 Revised: 2024-01-26 By: mblackwood



- Surface Water Sampling Station
- Final Discharge Point
- Watershed
- Project Area
- Transmission Line 230 kV
- Other Features**
- Road / Highway
- Resource Road / Trail
- Watercourse
- Waterbody
- Forested Area



- Notes**
1. Coordinate System: NAD 1983 CSRS UTM Zone 21N
 2. Data Sources: Stantec; World Energy GH2; NL ECC Water Resources Management Division; NL Fisheries, Forestry and Agriculture; NRCan CanVec; OpenStreetMap
 3. Background: NRCan CanVec

Key Map

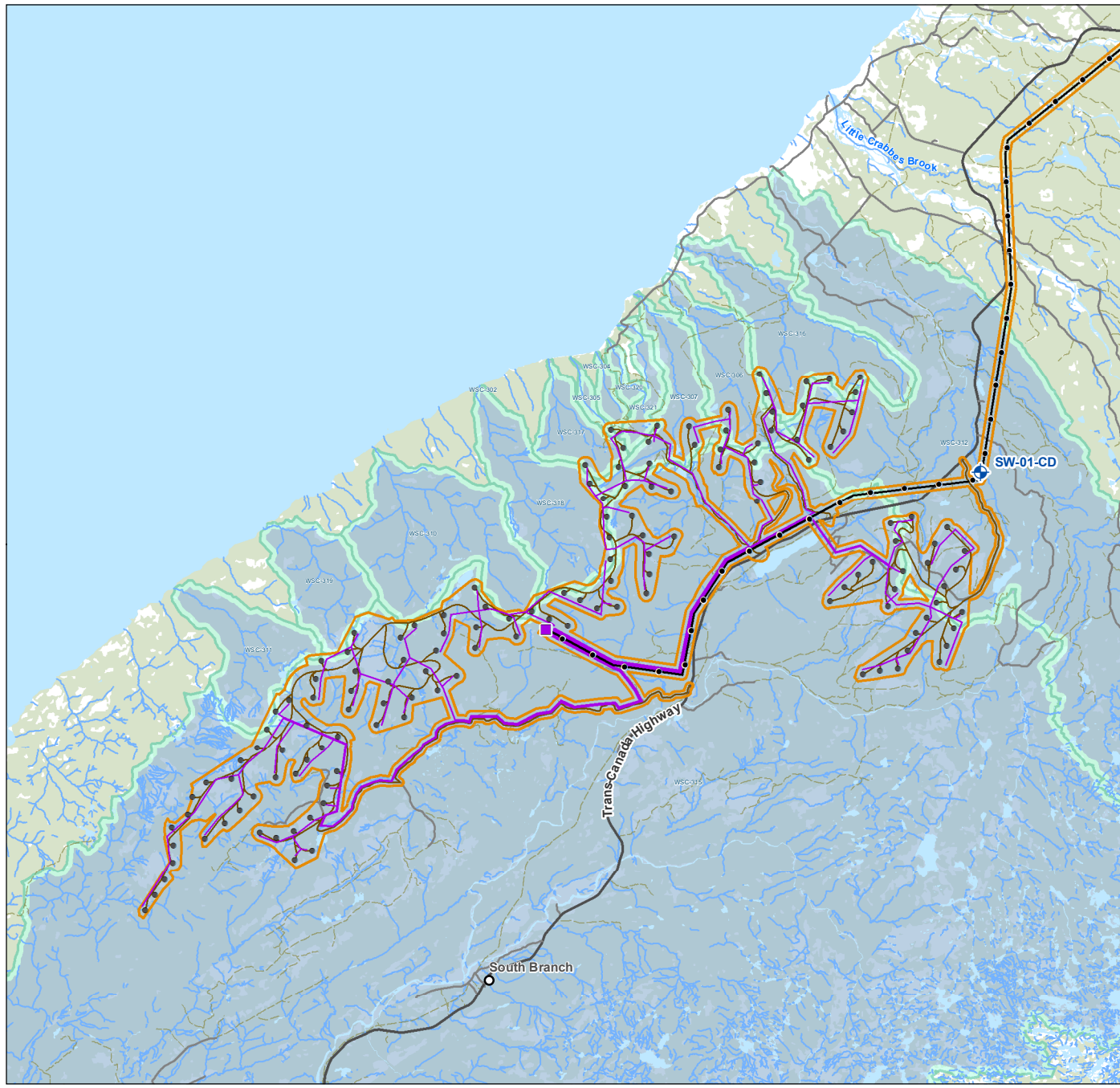


Project Location Stephenville NL	Revised by AC on 2024-01-18 QR by AW on 2024-01-18
Client/Project World Energy GH2 Project Nujjo'qonik	121418050_071
Figure No. ECCC57-A	Page 3 of 4

Proposed Surface Water Monitoring Sampling Stations

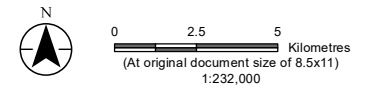
Disclaimer: This document has been prepared based on information provided by others as cited in the Notes section. Stantec has not verified the accuracy and/or completeness of this information and shall not be responsible for any errors or omissions which may be incorporated herein as a result. Stantec assumes no responsibility for data supplied in electronic format, and the recipient accepts full responsibility for verifying the accuracy and completeness of the data.

V:\1214\active\12141723303_data\gis_data\mapping\mxd\general\IEIS_Amendment\Ch14_ECCC\121418050_071_appendix\ECCC57A_SW_Sample_Stations_mapbook.mxd
 Revised: 2024-01-26 By: mblackwood

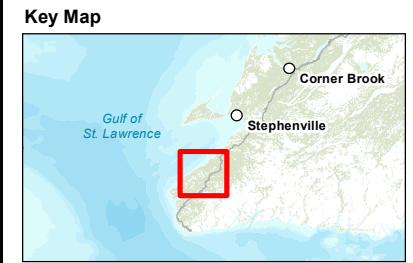


Stantec

- Surface Water Sampling Station
- Watershed
- Proposed Project Features**
 - Turbine Location
 - Substation
 - Project Area
 - Transmission Line 230 kV
 - Collector Line
 - Access Road
- Other Features**
 - Trans-Canada Highway
 - Road / Highway
 - Resource Road / Trail
 - Watercourse
 - Waterbody
 - Forested Area



Notes
 1. Coordinate System: NAD 1983 CSRS UTM Zone 21N
 2. Data Sources: Stantec; World Energy GH2; NL ECC Water Resources Management Division; NL Fisheries, Forestry and Agriculture; NRCan CanVec; OpenStreetMap
 3. Background: NRCan CanVec



Project Location Stephenville NL	Revised by AC on 2024-01-18 QR by AW on 2024-01-18
Client/Project World Energy GH2 Project Nujjo'qonik	121418050_071
Figure No. ECCC57-A	Page 4 of 4

Proposed Surface Water Monitoring Sampling Stations

Disclaimer: This document has been prepared based on information provided by others as cited in the Notes section. Stantec has not verified the accuracy and/or completeness of this information and shall not be responsible for any errors or omissions which may be incorporated herein as a result. Stantec assumes no responsibility for data supplied in electronic format, and the recipient accepts full responsibility for verifying the accuracy and completeness of the data.