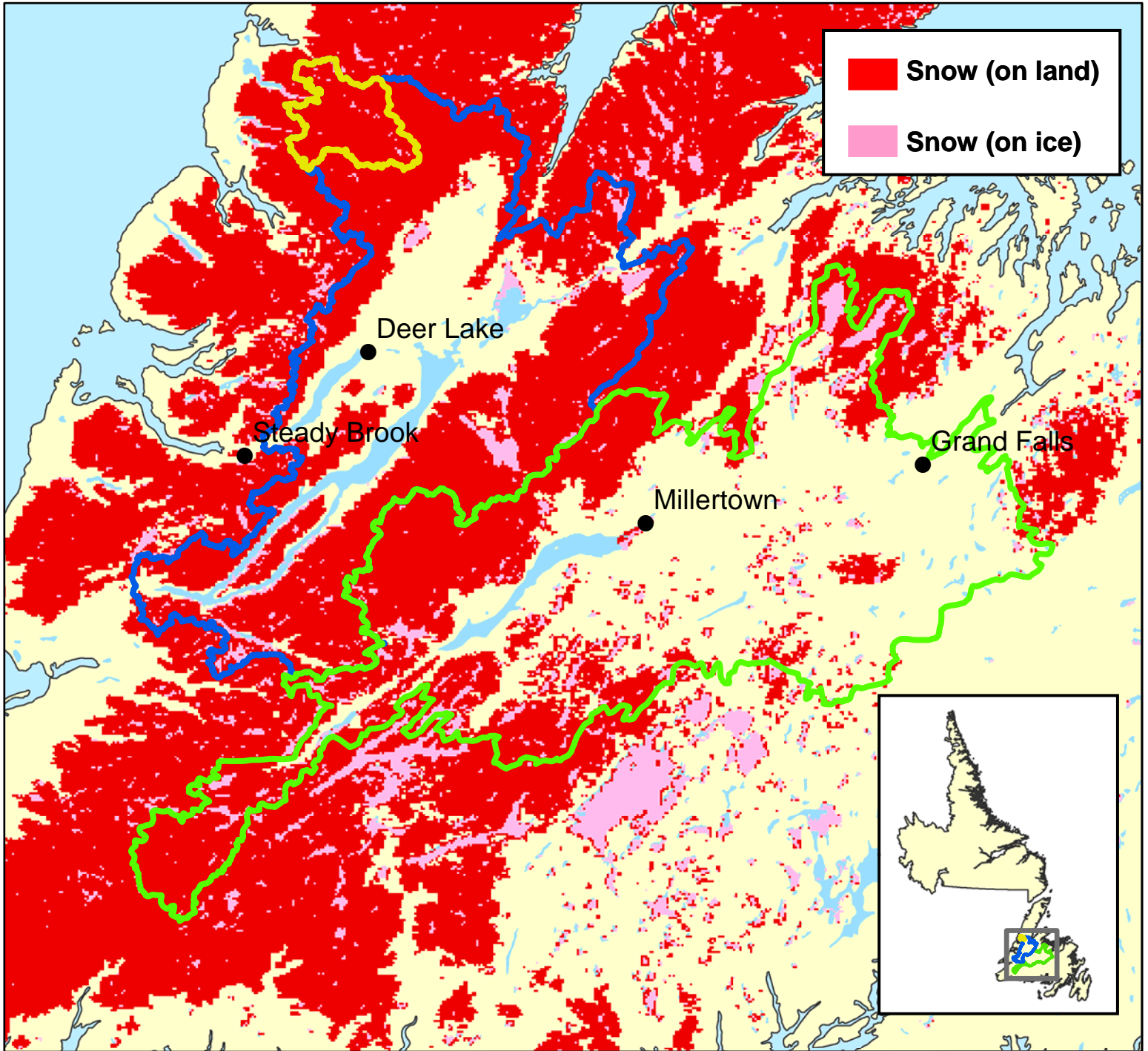


# Snow Extent (SE) - April 22, 2013



**Upper Humber**

Total Area = 474 km<sup>2</sup>  
 Area SE = 464 km<sup>2</sup>  
 Percent SE = 98 %

**Lower Humber**

Total Area = 7,822 km<sup>2</sup>  
 Area SE = 4,994 km<sup>2</sup>  
 Percent SE = 64 %

**Exploits**

Total Area = 10,255 km<sup>2</sup>  
 Area SE = 3,795 km<sup>2</sup>  
 Percent SE = 37 %