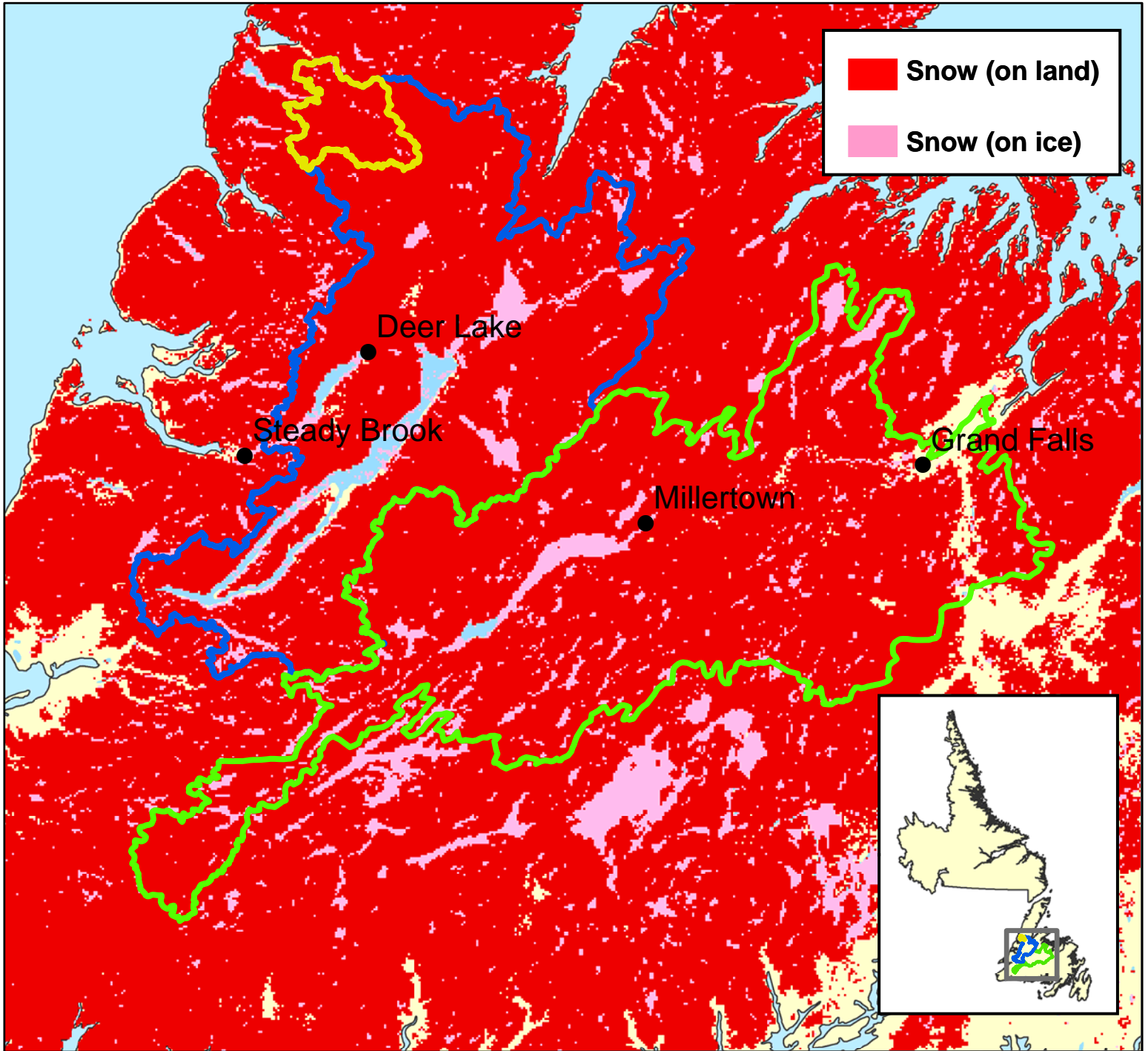


# Snow Extent (SE) - April 7, 2013



□ **Upper Humber**

Total Area = 474 km<sup>2</sup>  
Area SE = 464 km<sup>2</sup>  
Percent SE = 98 %

□ **Lower Humber**

Total Area = 7,822 km<sup>2</sup>  
Area SE = 6,775 km<sup>2</sup>  
Percent SE = 87 %

□ **Exploits**

Total Area = 10,255 km<sup>2</sup>  
Area SE = 9,066 km<sup>2</sup>  
Percent SE = 88 %