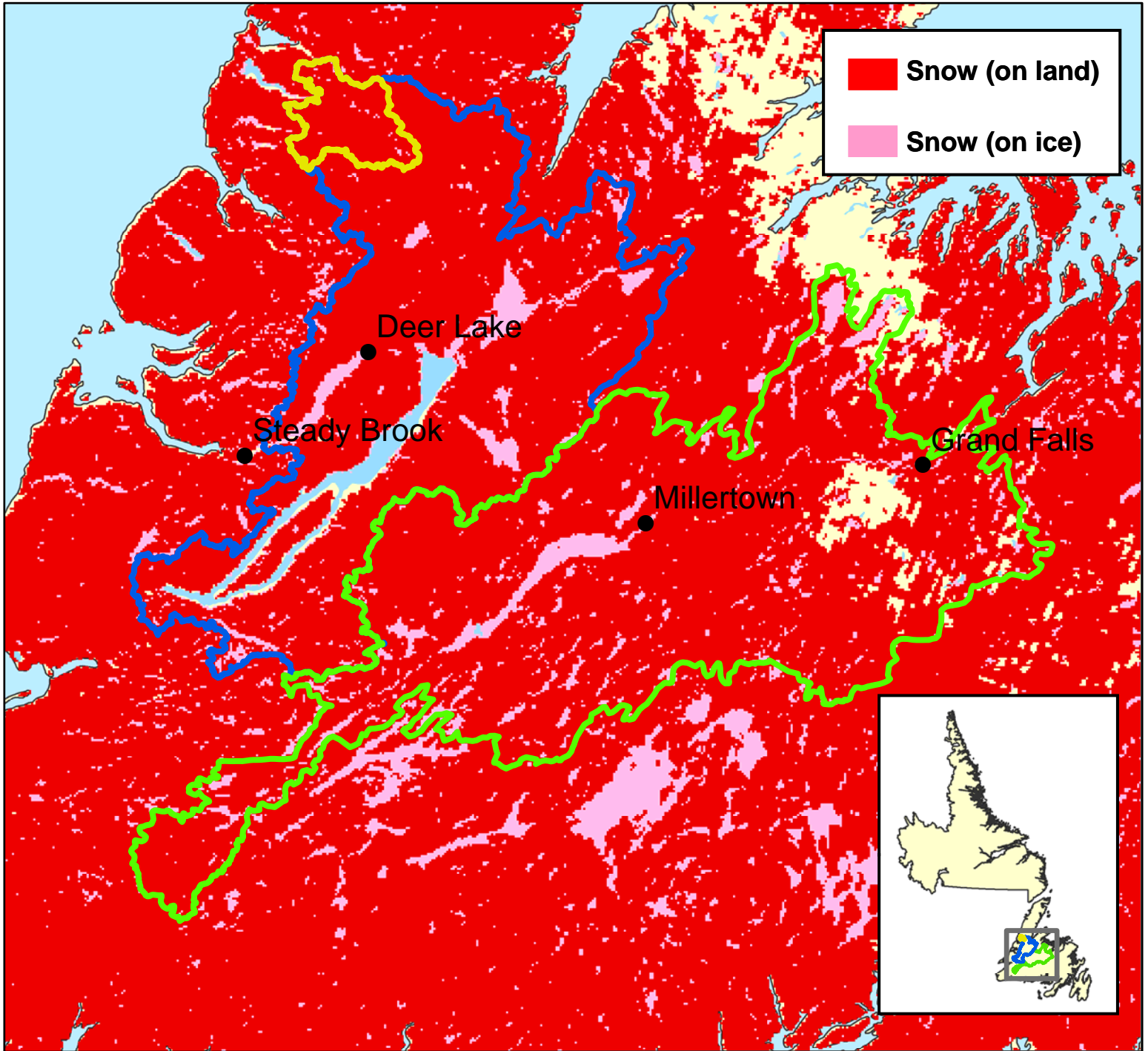


# Snow Extent (SE) - February 28, 2013



**Upper Humber**

Total Area = 474 km<sup>2</sup>  
 Area SE = 464 km<sup>2</sup>  
 Percent SE = 98 %

**Lower Humber**

Total Area = 7,822 km<sup>2</sup>  
 Area SE = 6,798 km<sup>2</sup>  
 Percent SE = 87 %

**Exploits**

Total Area = 10,255 km<sup>2</sup>  
 Area SE = 8,871 km<sup>2</sup>  
 Percent SE = 87 %