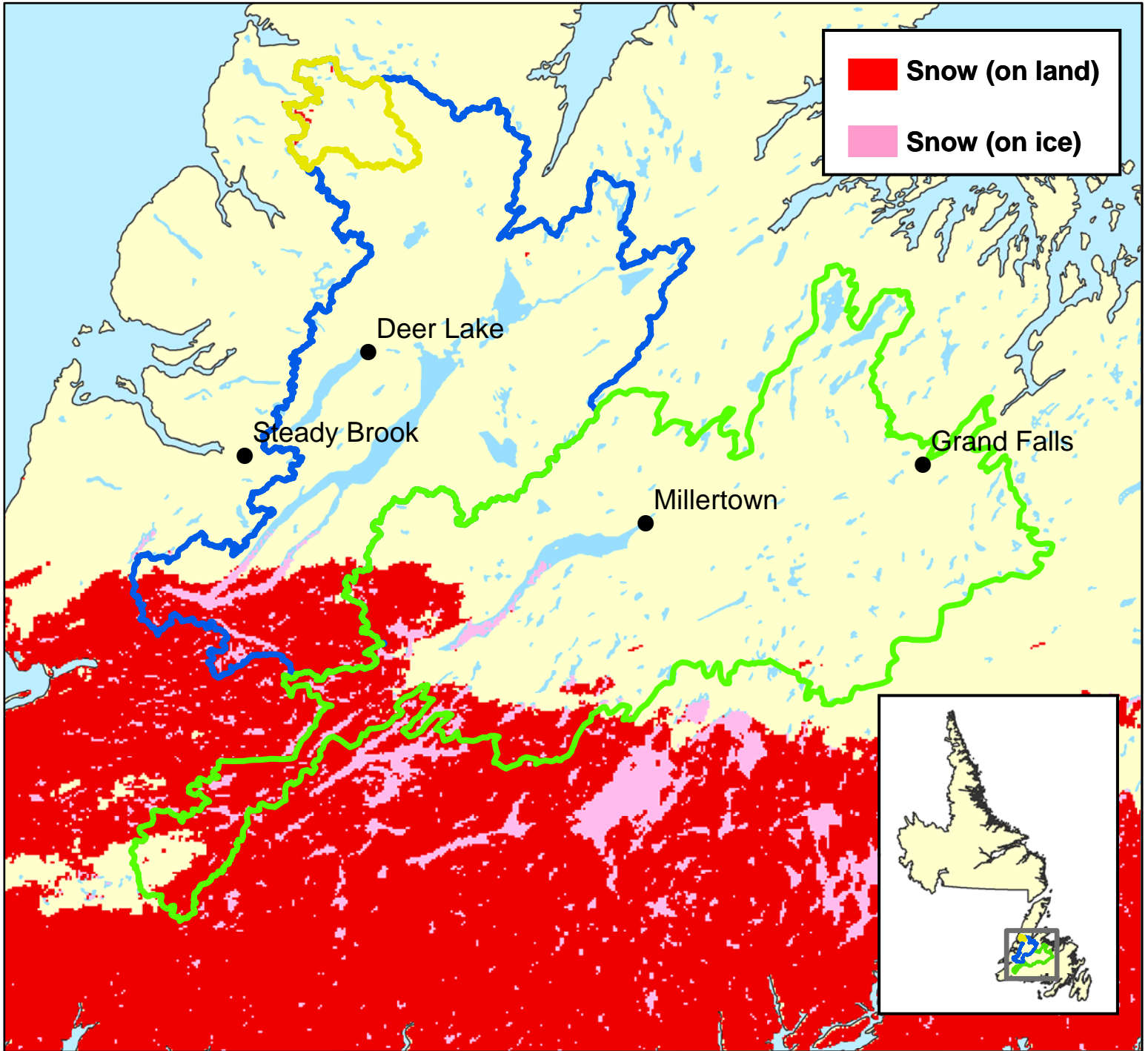


Snow Extent (SE) - June 7, 2013



Upper Humber

Total Area = 474 km²
 Area SE = 6 km²
 Percent SE = 1 %

Lower Humber

Total Area = 7,822 km²
 Area SE = NA* km²
 *Cloud cover in South

Exploits

Total Area = 10,255 km²
 Area SE = NA* km²
 *Cloud cover in South