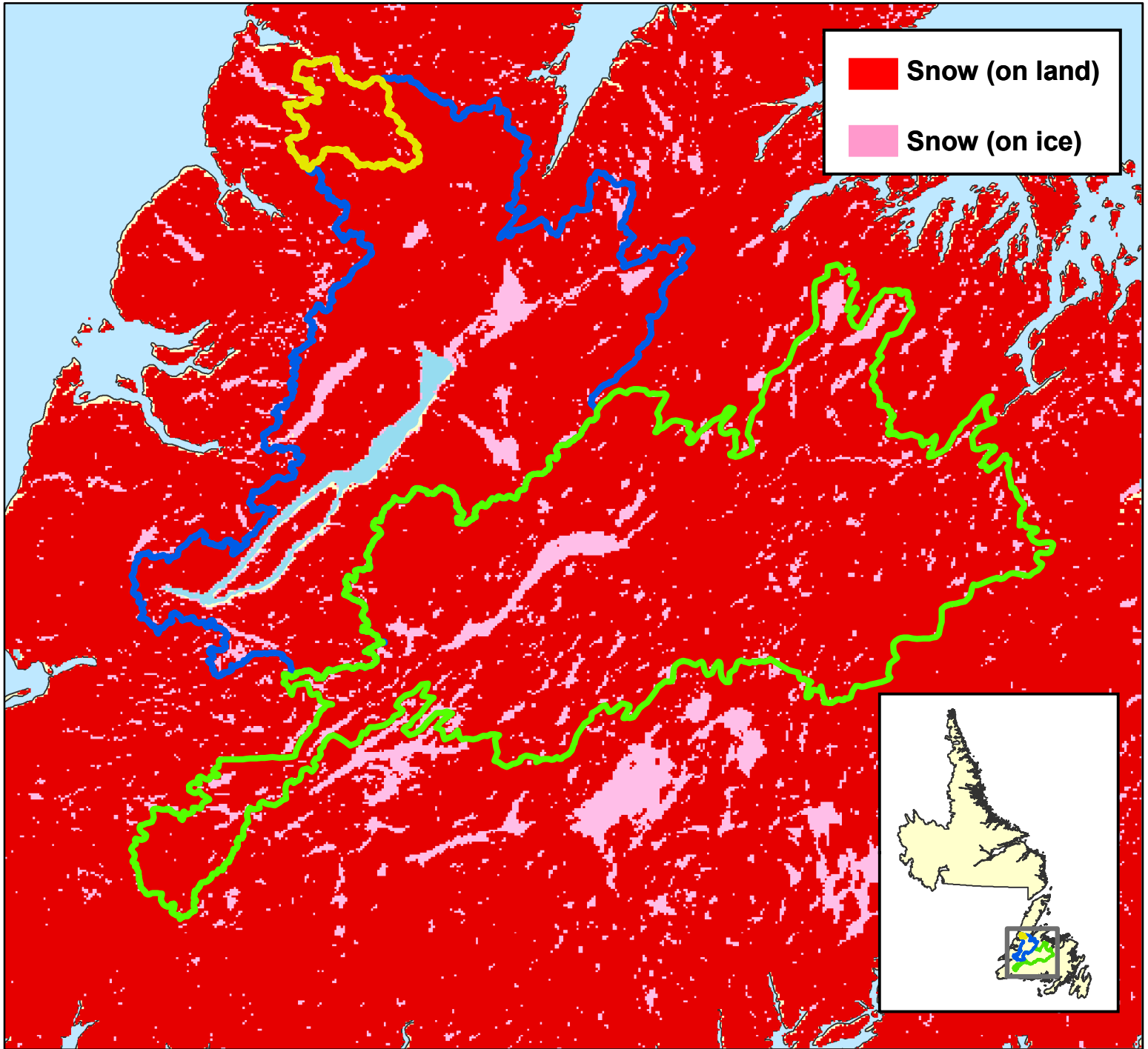


# Snow Extent (SE) - February 18, 2014



**Upper Humber**

Total Area = 474 km<sup>2</sup>  
Area SE = 474 km<sup>2</sup>  
Percent SE = 100%

**Lower Humber**

Total Area = 7,822 km<sup>2</sup>  
Area SE = 7,473 km<sup>2</sup>  
Percent SE = 96%

**Exploits**

Total Area = 10,255 km<sup>2</sup>  
Area SE = 10,255 km<sup>2</sup>  
Percent SE = 100%