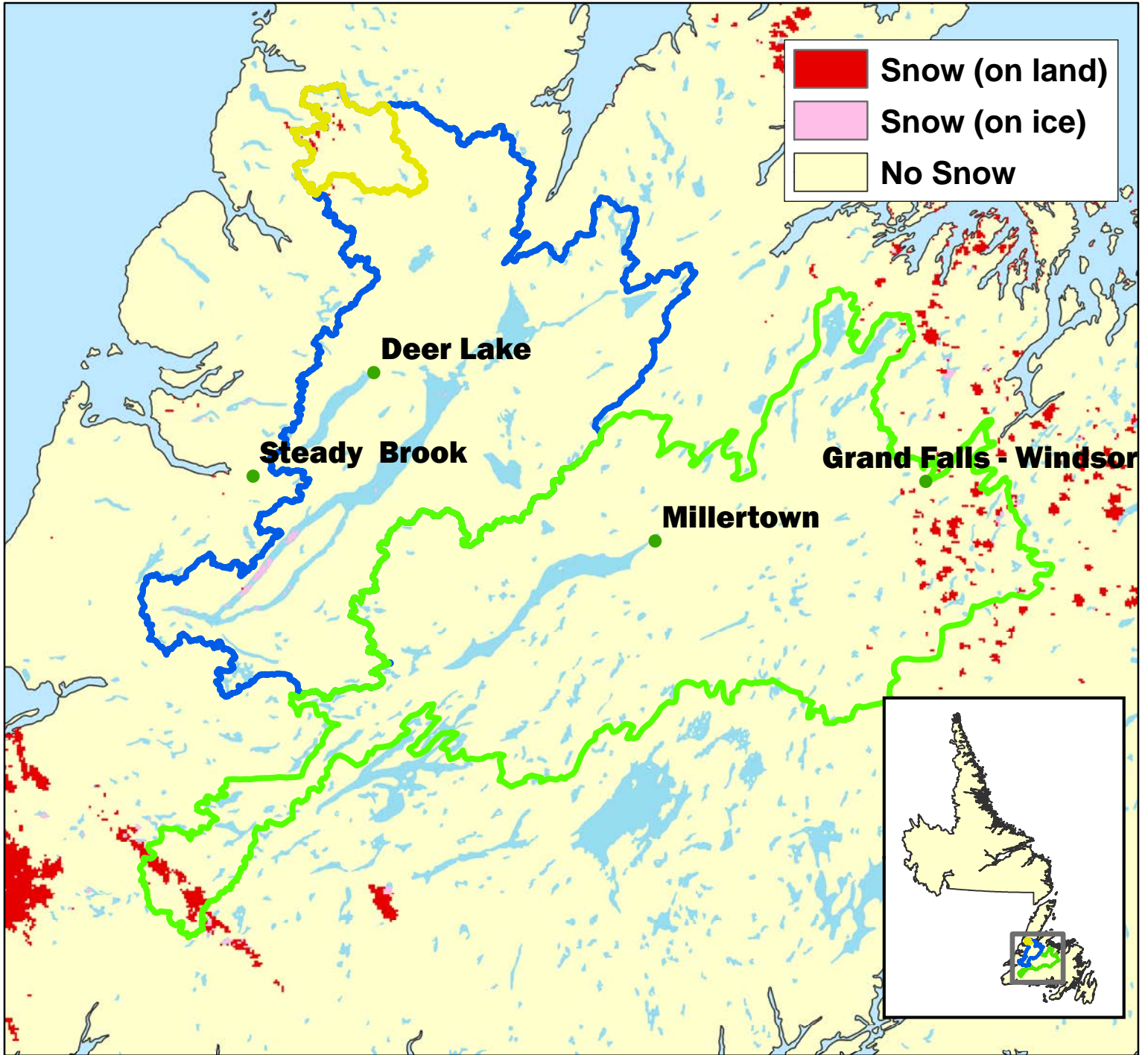


# Snow Extent (SE) - Jun 18, 2014



**Upper Humber**

Total Area = 474 km<sup>2</sup>  
 Area SE = 10 km<sup>2</sup>  
 Percent SE = 2%

**Lower Humber**

Total Area = 7,822 km<sup>2</sup>  
 Area SE = 34 km<sup>2</sup>  
 Percent SE = 0.4%

**Exploits**

Total Area = 10,255 km<sup>2</sup>  
 Area SE = ? km<sup>2</sup>  
 Percent SE = ?%

Snow extent calculation for Lower Humber and Exploits may not reflect the actual ground situation as the image is contaminated by cloud cover