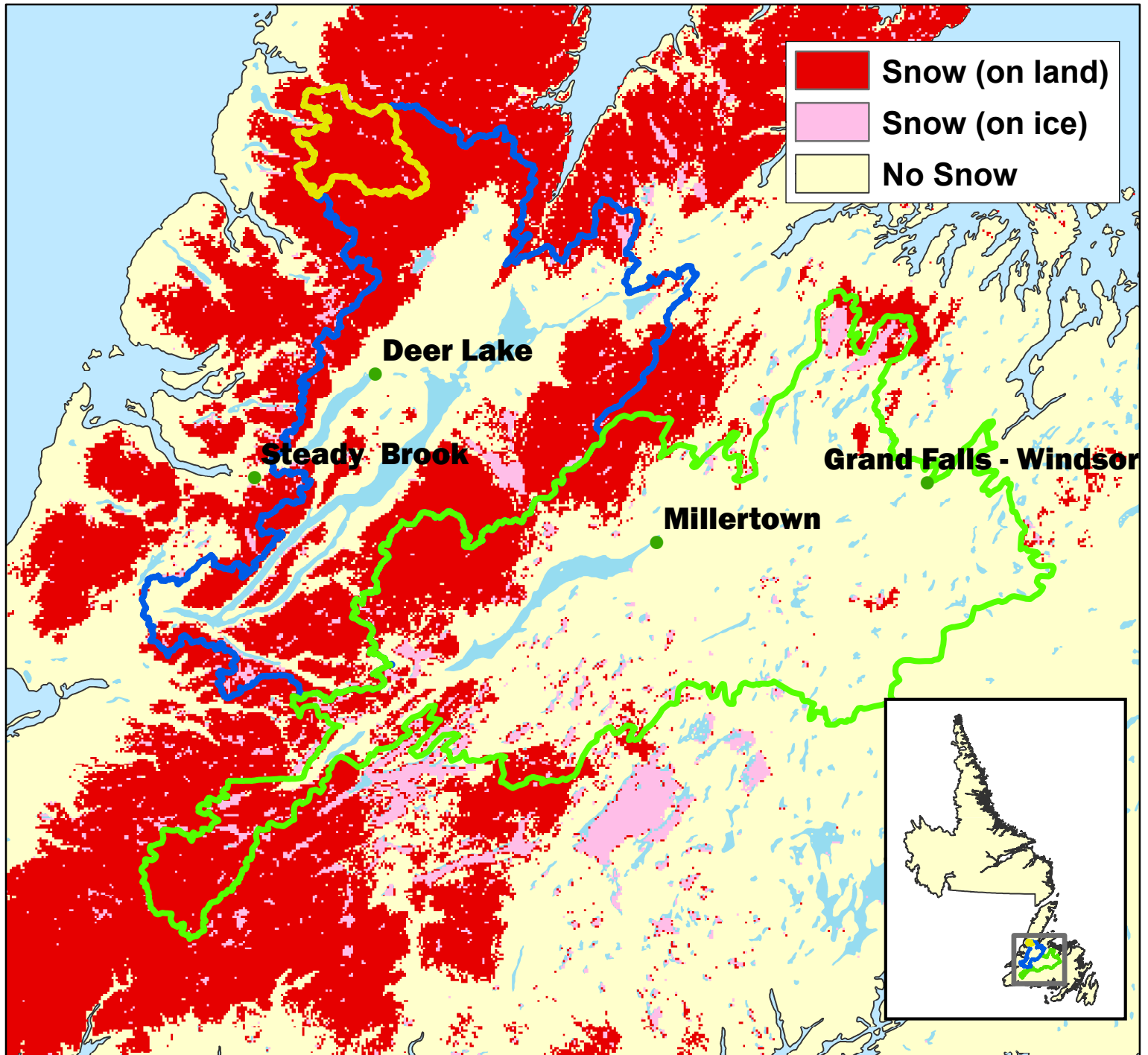


# Snow Extent (SE) - May 14, 2014



**Upper Humber**

Total Area = 474 km<sup>2</sup>  
 Area SE = 474 km<sup>2</sup>  
 Percent SE = 100%

**Lower Humber**

Total Area = 7,822 km<sup>2</sup>  
 Area SE = 4,330 km<sup>2</sup>  
 Percent SE = 55%

**Exploits**

Total Area = 10,255 km<sup>2</sup>  
 Area SE = 2799 km<sup>2</sup>  
 Percent SE = 27%