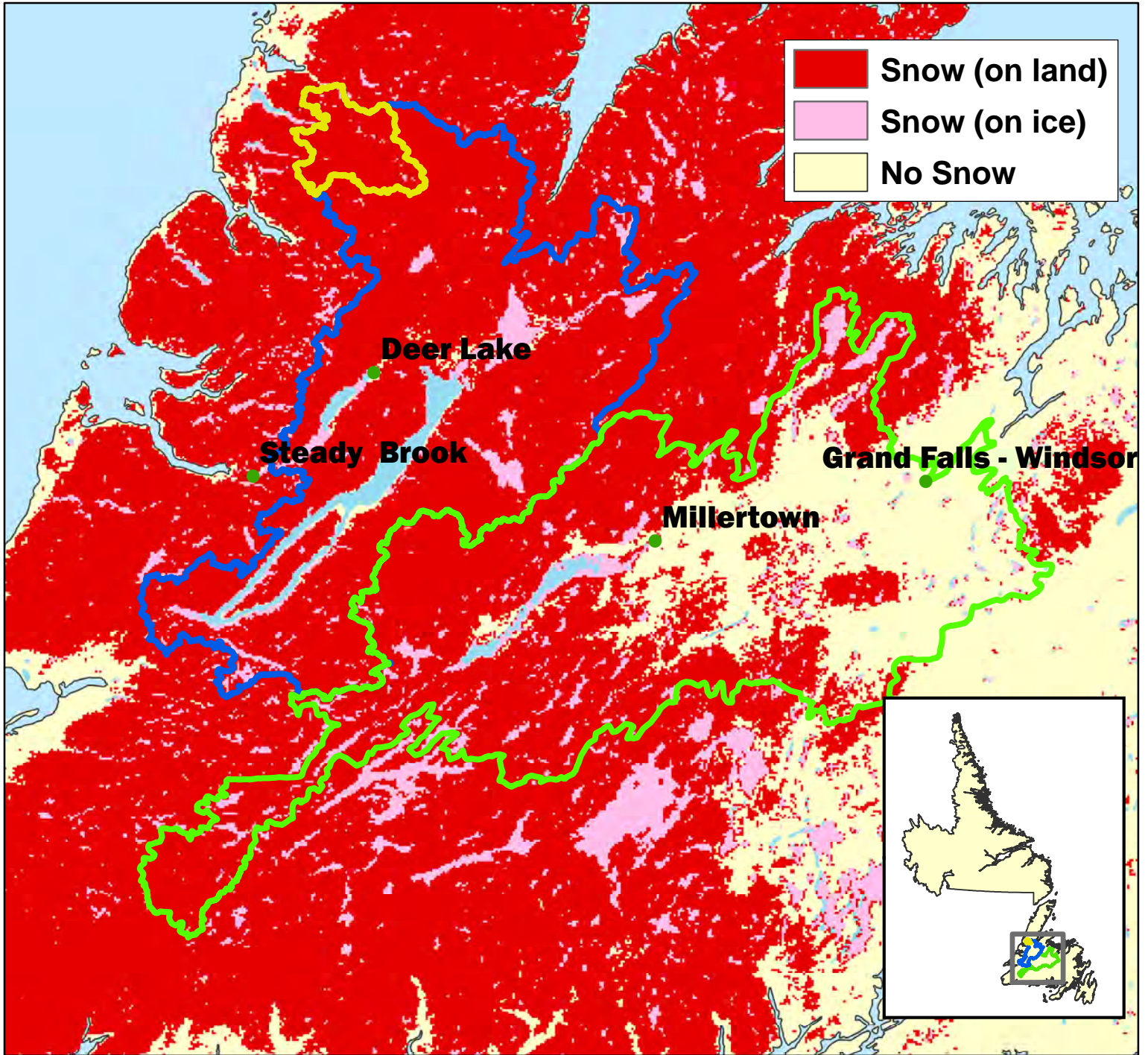


# Snow Extent (SE) - May 4, 2015



**Upper Humber**

Total Area = 474 km<sup>2</sup>  
 Area SE = 474 km<sup>2</sup>  
 Percent SE = 100%

**Lower Humber**

Total Area = 7,822 km<sup>2</sup>  
 Area SE = 7,368 km<sup>2</sup>  
 Percent SE = 94%

**Exploits**

Total Area = 10,255 km<sup>2</sup>  
 Area SE = 6,657 km<sup>2</sup>  
 Percent SE = 65%