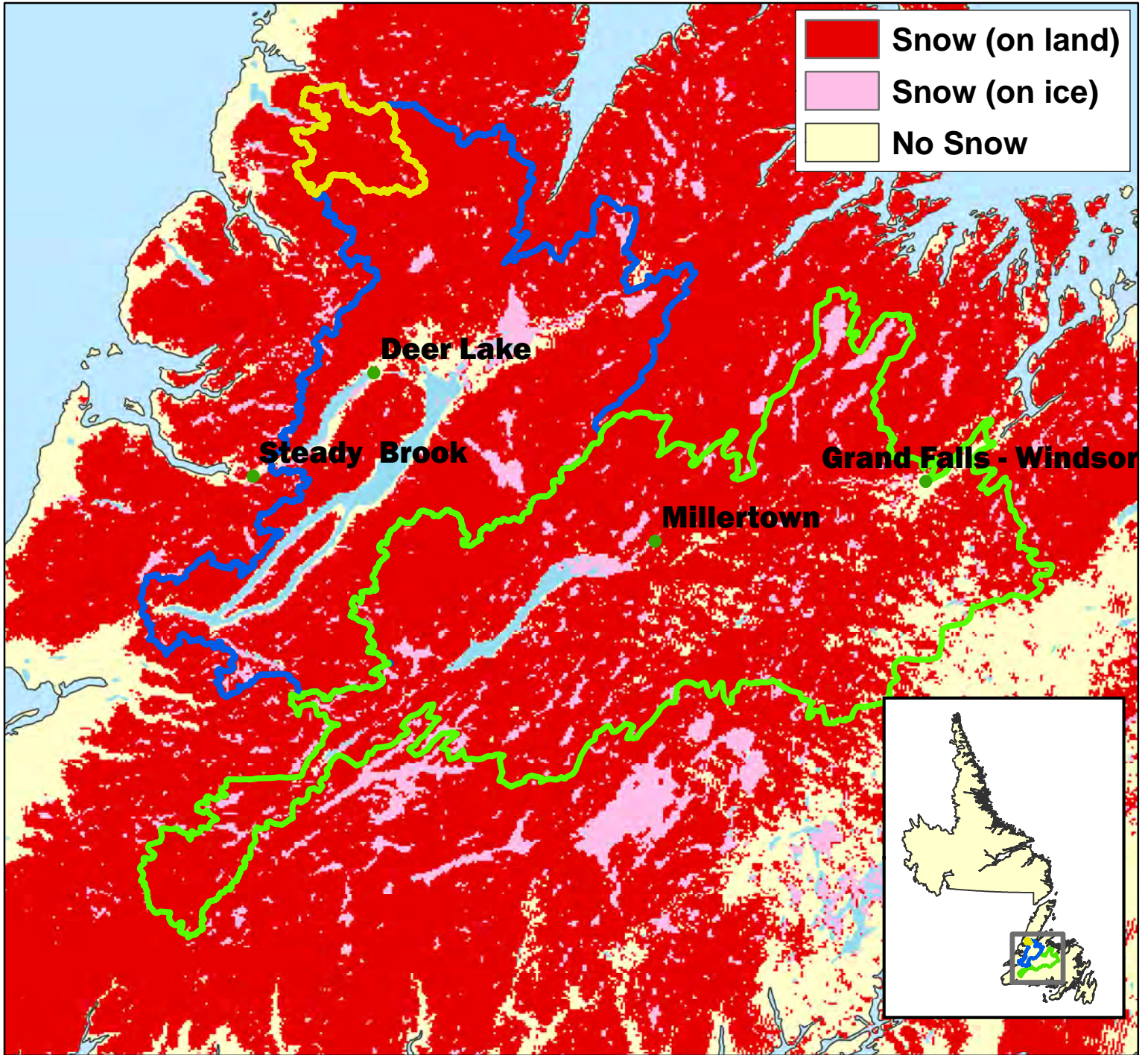


# Snow Extent (SE) - May 4, 2017



**Upper Humber**

Total Area = 474 km<sup>2</sup>  
 Area SE = 474 km<sup>2</sup>  
 Percent SE = 100%

**Lower Humber**

Total Area = 7,822 km<sup>2</sup>  
 Area SE = 6,952 km<sup>2</sup>  
 Percent SE = 89%

**Exploits**

Total Area = 10,255 km<sup>2</sup>  
 Area SE = 9,473 km<sup>2</sup>  
 Percent SE = 92%