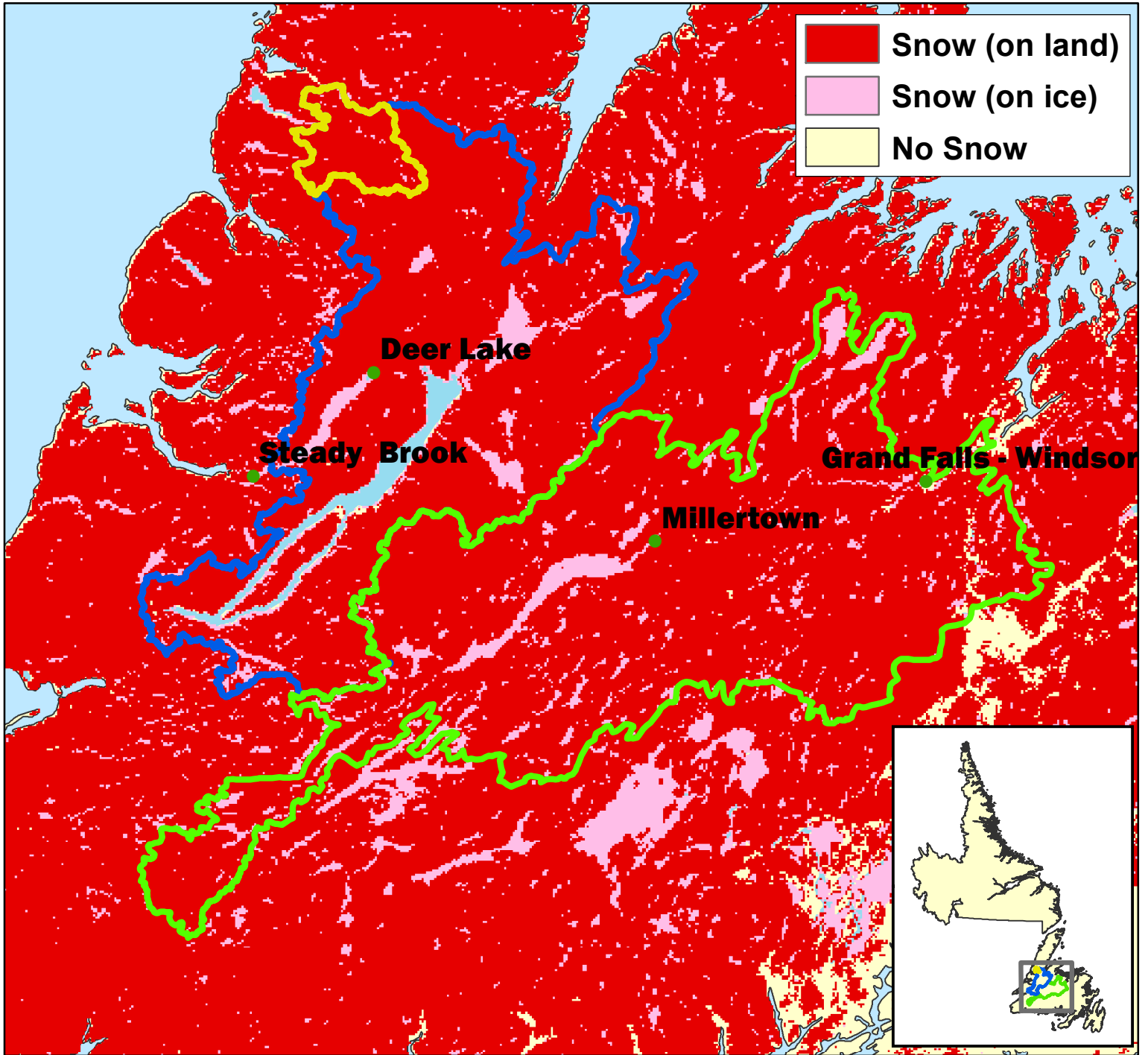


# Snow Extent (SE) - April 16, 2018



**Upper Humber**

Total Area = 474 km<sup>2</sup>  
 Area SE = 474 km<sup>2</sup>  
 Percent SE = 100%

**Lower Humber**

Total Area = 7,822 km<sup>2</sup>  
 Area SE = 7,488 km<sup>2</sup>  
 Percent SE = 96%

**Exploits**

Total Area = 10,255 km<sup>2</sup>  
 Area SE = 10,191 km<sup>2</sup>  
 Percent SE = 99%