

58° 0' 57° 45' 57° 30' 57° 15' 57° 0' 56° 45' 56° 30' 56° 15' 56° 0' 55° 45' 55° 30'

Map No. 2a
BEDROCK GEOLOGY
Central Newfoundland

SYMBOLS

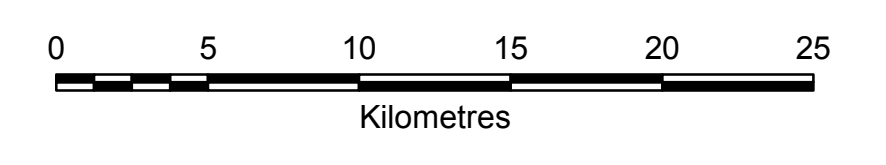
Contact (defined, approximate, assumed).....	
Contact (gradational or transitional).....	
Unconformity (defined).....	
Fault.....	
High Angle Fault.....	
Thrust Fault.....	
Anticlinal axis (defined).....	
Synclinal axis (defined).....	
Shear Zone.....	

NOTES:

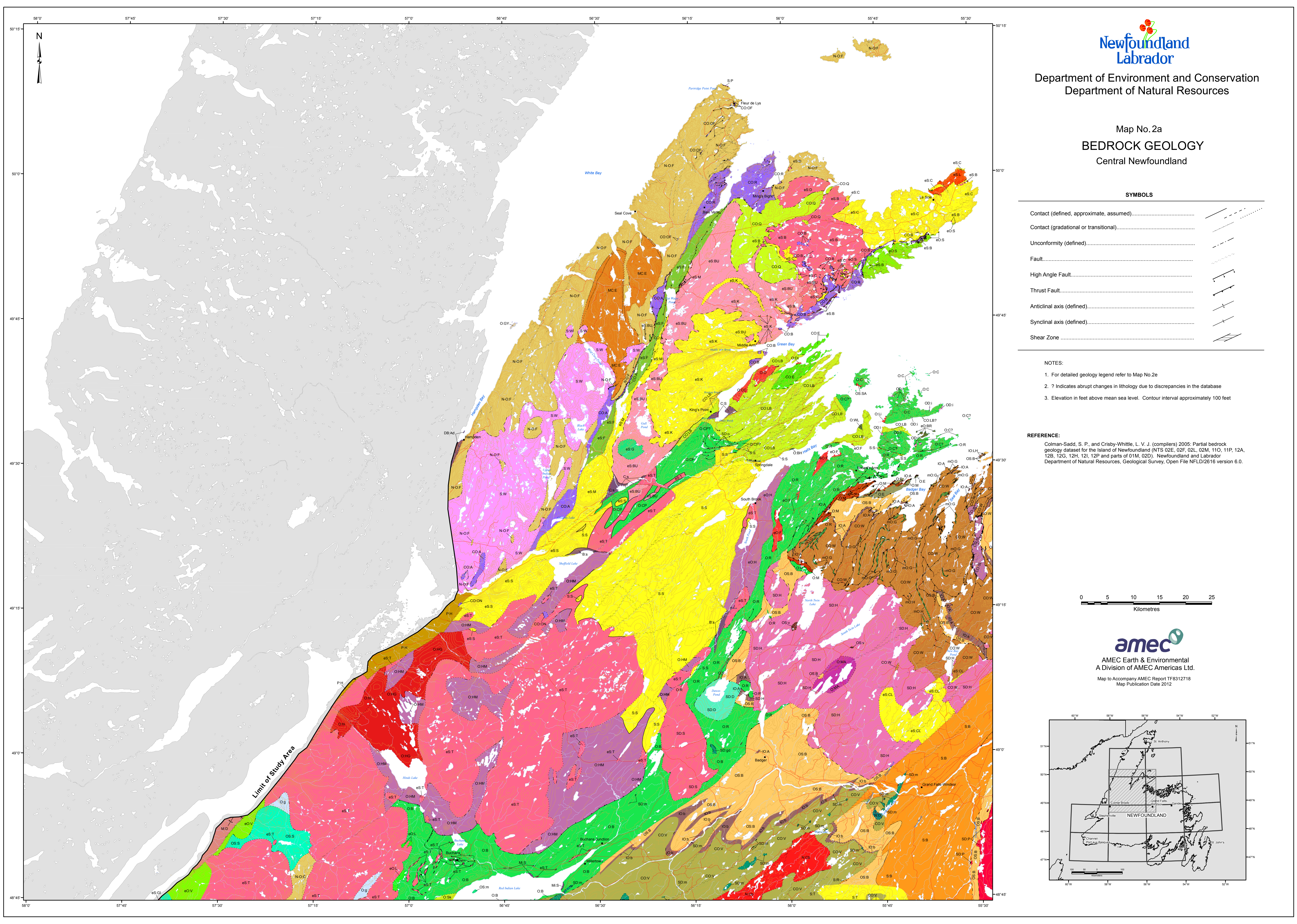
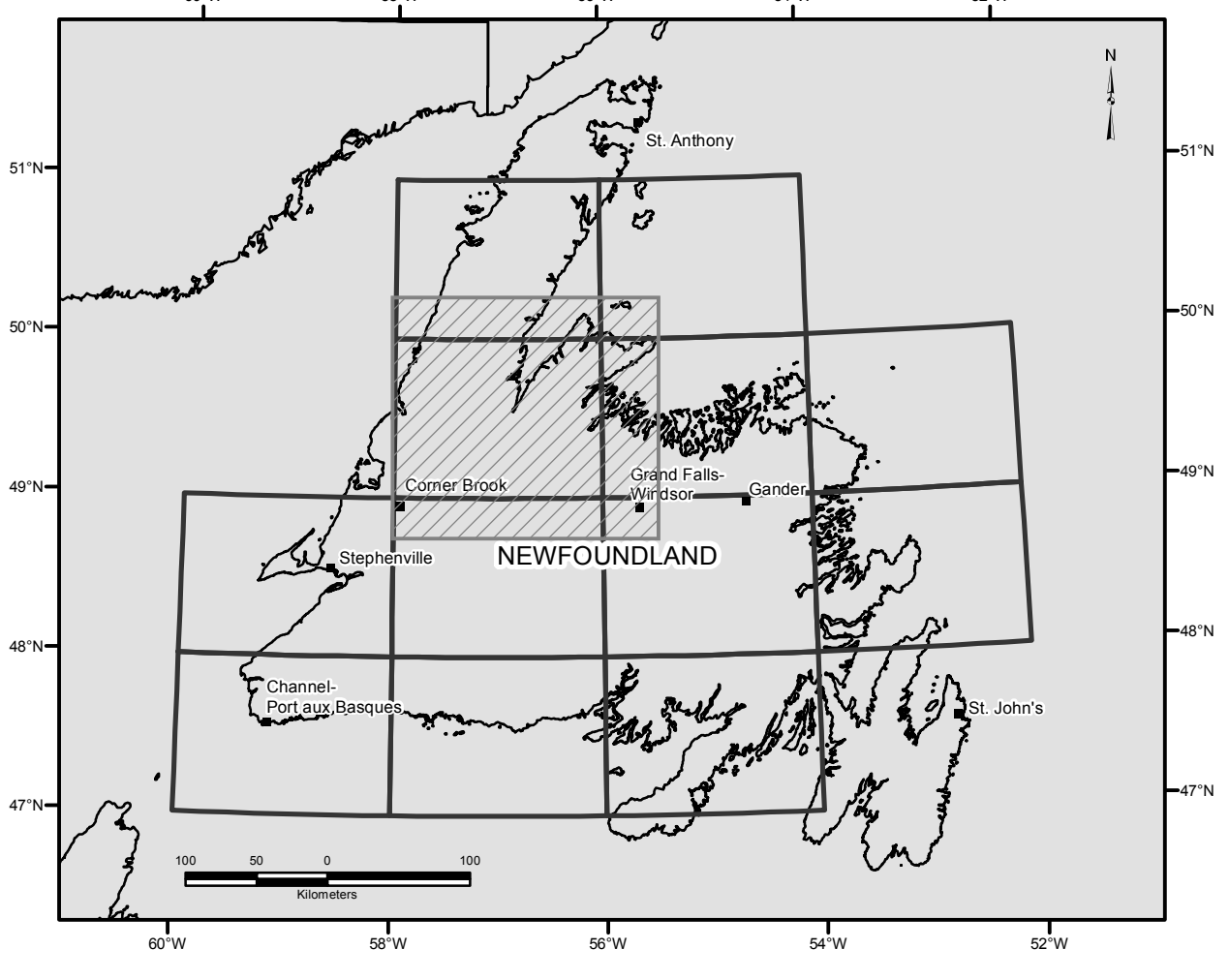
1. For detailed geology legend refer to Map No.2e
2. ? Indicates abrupt changes in lithology due to discrepancies in the database
3. Elevation in feet above mean sea level. Contour interval approximately 100 feet

REFERENCE:

Colman-Sadd, S. P., and Crispy-Whittle, L. V. J. (compilers) 2005: Partial bedrock geology dataset for the Island of Newfoundland (NTS 02E, 02F, 02L, 02M, 110, 11P, 12A, 12B, 12G, 12H, 12I, 12P and parts of 01M, 02D). Newfoundland and Labrador Department of Natural Resources, Geological Survey, Open File NFLD/2616 version 6.0.



AMEC Earth & Environmental
A Division of AMEC Americas Ltd.
Map to Accompany AMEC Report TF8312718
Map Publication Date 2012



58° 0' 57° 45' 57° 30' 57° 15' 57° 0' 56° 45' 56° 30' 56° 15' 56° 0' 55° 45' 55° 30'