

**Real Time Water Quality Report
Southwest Brook below Southwest Pond
(Conne River)
2008-07-30 to 2008-12-10**

General

- This station is operated cooperatively with the Miawapukek First Nation (Conne River) as a Pilot Project for Drinking Water Source Monitoring. This is the only known application of Real Time Water Quality Monitoring for a drinking water source for any First Nations community in Canada.
- The Water Resources Management Division's (WRMD) staff monitors the real-time web page on a daily basis. Any unusual observations are investigated, with site visits being carried out as warranted.
- Operators at Conne River are informed of any significant water quality events or instrumentation problems by WRMD.
- Site visits for QA/QC purposes are conducted by WRMD approximately four times per year.
- Monthly calibration and maintenance is undertaken by operators at the Conne River Water Treatment Plant.
- Raw (uncorrected) data has been used in the preparation of the graphs and subsequent discussion below.

Maintenance and Calibration of Instrumentation

- Following regular cleaning and calibration of the DataSonde at the Water Treatment Plant in Conne River, the instrument was installed in Southwest Brook over the course of three separate deployment periods:
 - 2008-07-30 to 2008-09-25 (57 day period)
 - 2008-09-25 to 2008-11-07 (43 day period)
 - 2008-11-07 to 2008-12-10 (33 day period)
- The vertical lines on some of the graphs below correspond to times when there was a loss of data transmission, or when the instruments were removed from service.
- *In-situ* measurements of ambient water quality were undertaken with a freshly calibrated MiniSonde each time a DataSonde was installed or removed for QA/QC purposes.
- The comparative results between the MiniSonde and DataSonde values at the beginning and end of each deployment period are shown in Table 1.

Southwest Brook below Southwest Pond (NF02ZE0033)				
Date (yyyy-mm-dd)	Parameter	MiniSonde® Data	DataSonde® Data	Rating
2008-07-30 Installation	Temp (°C)	22.74	23.33	Fair
	pH (units)	6.03	5.91	Excellent
	Sp. Conductivity (uS/cm)	14.8	15.3	Excellent
	Dissolved Oxygen (mg/L)	8.48	8.47	Excellent
	Turbidity (NTU)	0.0	0.0	Excellent
2008-09-25 Removal	Temp (°C)	9.43	9.08	Good
	pH (units)	5.48	5.50	Excellent
	Sp. Conductivity (uS/cm)	13.4	15.6	Excellent
	Dissolved Oxygen (mg/L)	10.61	10.81	Excellent
	Turbidity (NTU)	0.0	0.0	Excellent
2008-09-25 Installation	Temp (°C)	11.75	12.63	Marginal
	pH (units)	5.37	6.43	Poor
	Sp. Conductivity (uS/cm)	13.6	15.7	Excellent
	Dissolved Oxygen (mg/L)	10.65	10.85	Excellent
	Turbidity (NTU)	4.1	0.0	Good
2008-11-07 Removal	Temp (°C)	7.31	7.25	Excellent
	pH (units)	5.62	6.18	Fair
	Sp. Conductivity (uS/cm)	15.1	15.8	Excellent
	Dissolved Oxygen (mg/L)	12.08	12.23	Excellent
	Turbidity (NTU)	0.0	0.0	Excellent
2008-11-07 Installation	Temp (°C)	7.97	7.66	Good
	pH (units)	6.04	5.62	Good
	Sp. Conductivity (uS/cm)	15.0	15.8	Excellent
	Dissolved Oxygen (mg/L)	11.89	11.99	Excellent
	Turbidity (NTU)	0.0	0.0	Excellent
2008-12-10 Removal	Temp (°C)	3.38	3.35	Excellent
	pH (units)	5.47	5.09	Good
	Sp. Conductivity (uS/cm)	16.7	17.4	Excellent
	Dissolved Oxygen (mg/L)	13.18	13.18	Excellent
	Turbidity (NTU)	0.0	0.0	Excellent

Table 1

Data Interpretation

- The water temperature (**Figure 1**) decreased over the deployment period. Temperature values ranged from a minimum of 2.42 °C to a maximum of 26.72 °C.

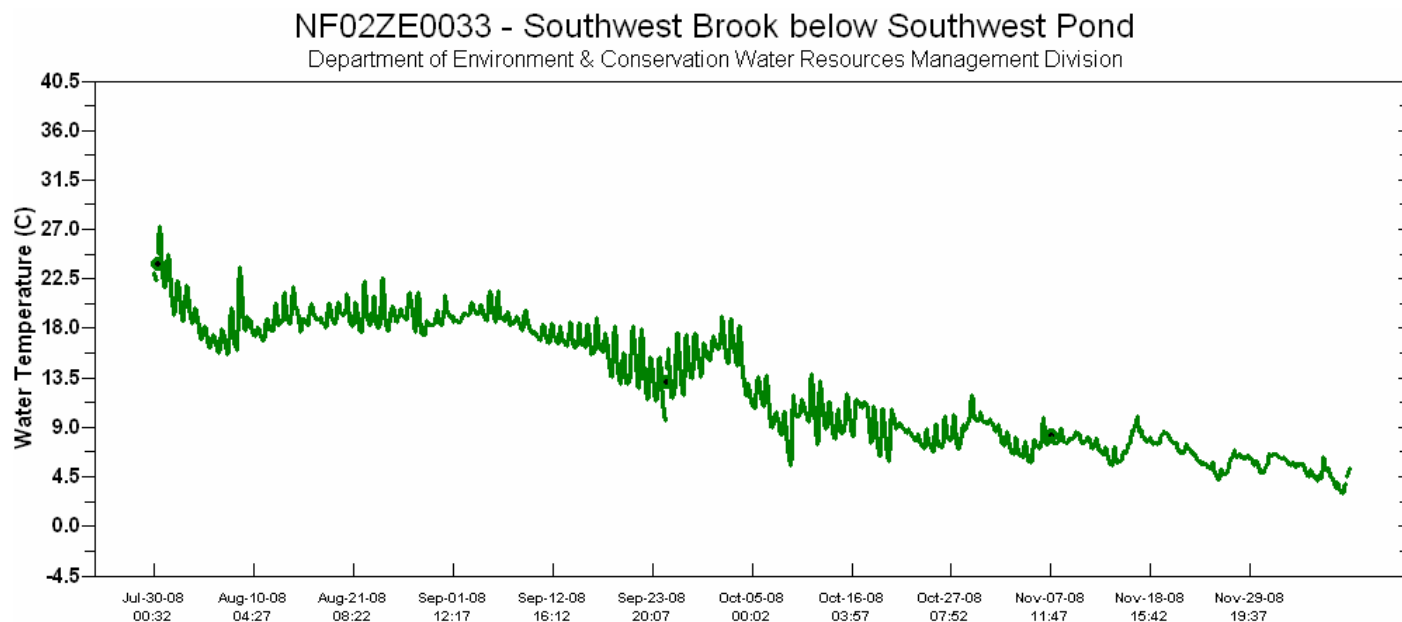


Figure 1

- Throughout the deployment period pH values (**Figure 2**) ranged from a minimum of 4.64 to a maximum of 6.75 with all values falling close to or below the recommended range (6.5 – 9.0) for the CCME *Canadian Water Quality Guidelines for the Protection of Aquatic Life*. The background pH of this stream is normally lower than the recommended range.

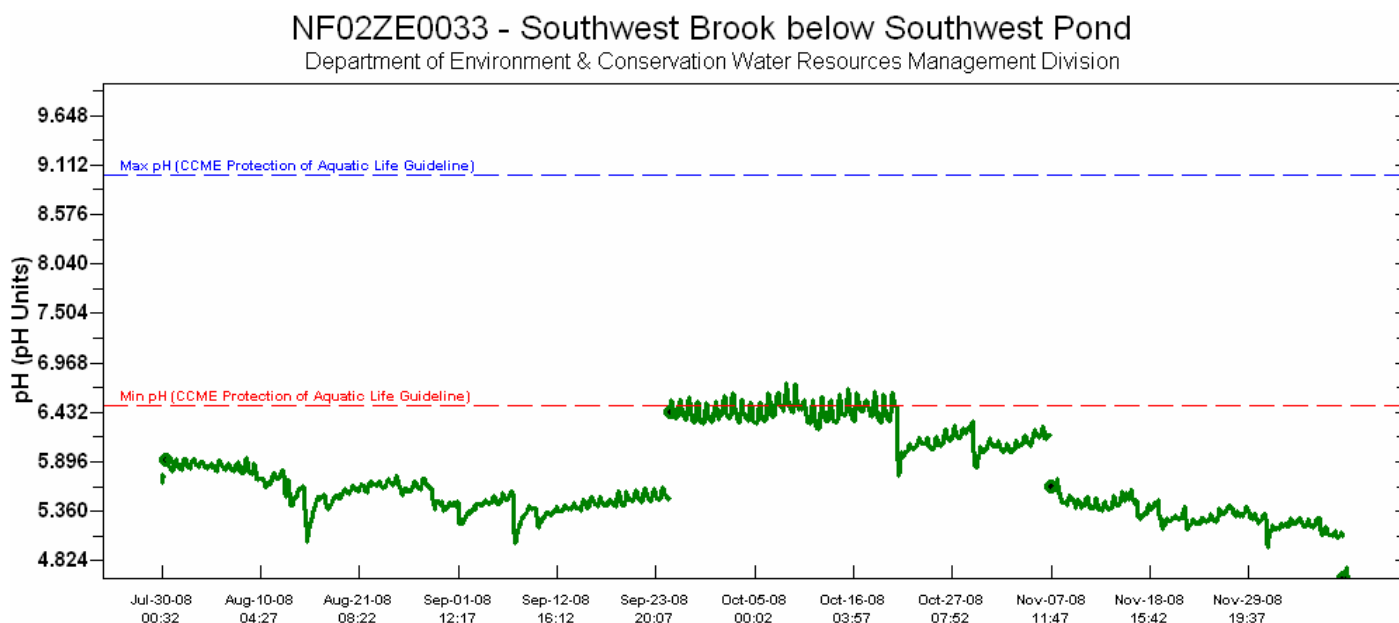


Figure 2

- The specific conductance (**Figure 3**) ranged from a minimum of 13.7 $\mu\text{S}/\text{cm}$ to a maximum of 20.3 $\mu\text{S}/\text{cm}$ over the deployment period.

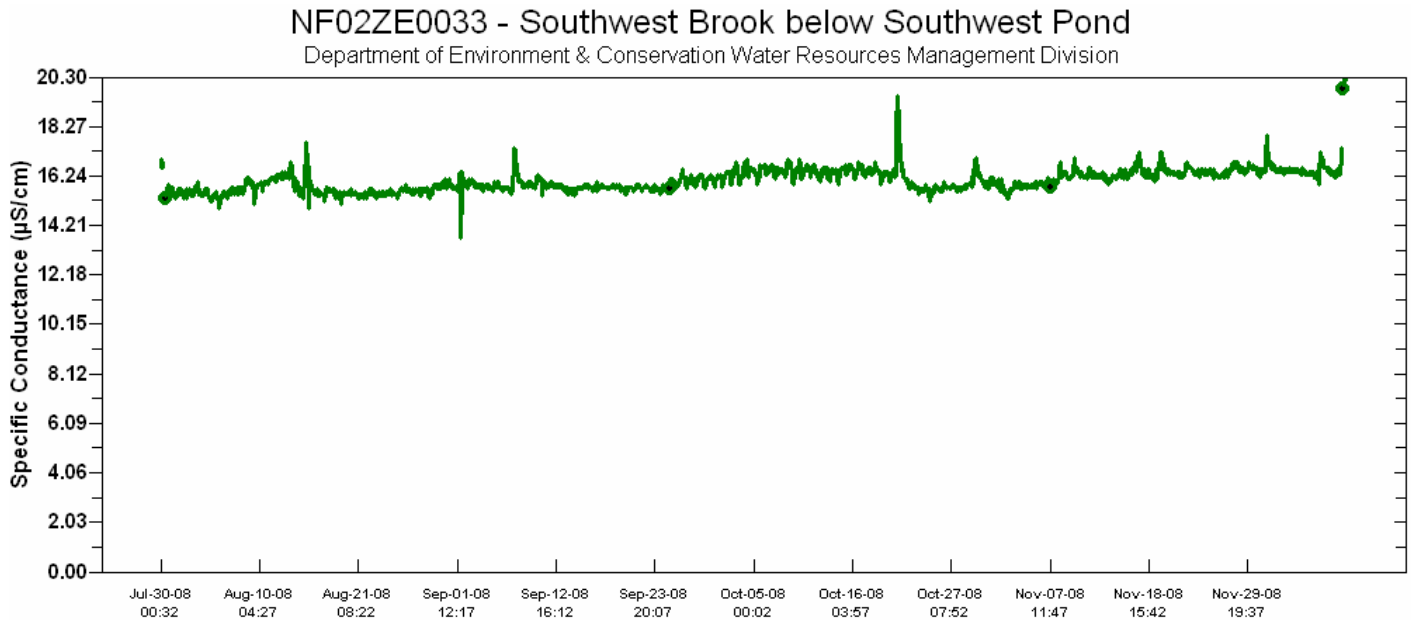


Figure 3

- The dissolved oxygen (**Figure 4**) values ranged from a minimum of 8.02 mg/L to a maximum of 13.30 mg/L over the deployment period. Dissolved oxygen is inversely proportional to water temperature. Throughout the deployment period, all dissolved oxygen values fell above the lower limit recommended by CCME *Canadian Water Quality Guidelines for the Protection of Aquatic Life* (cold water/other life stages – above 6.5 mg/L; cold water/early life stages – above 9.5 mg/L).

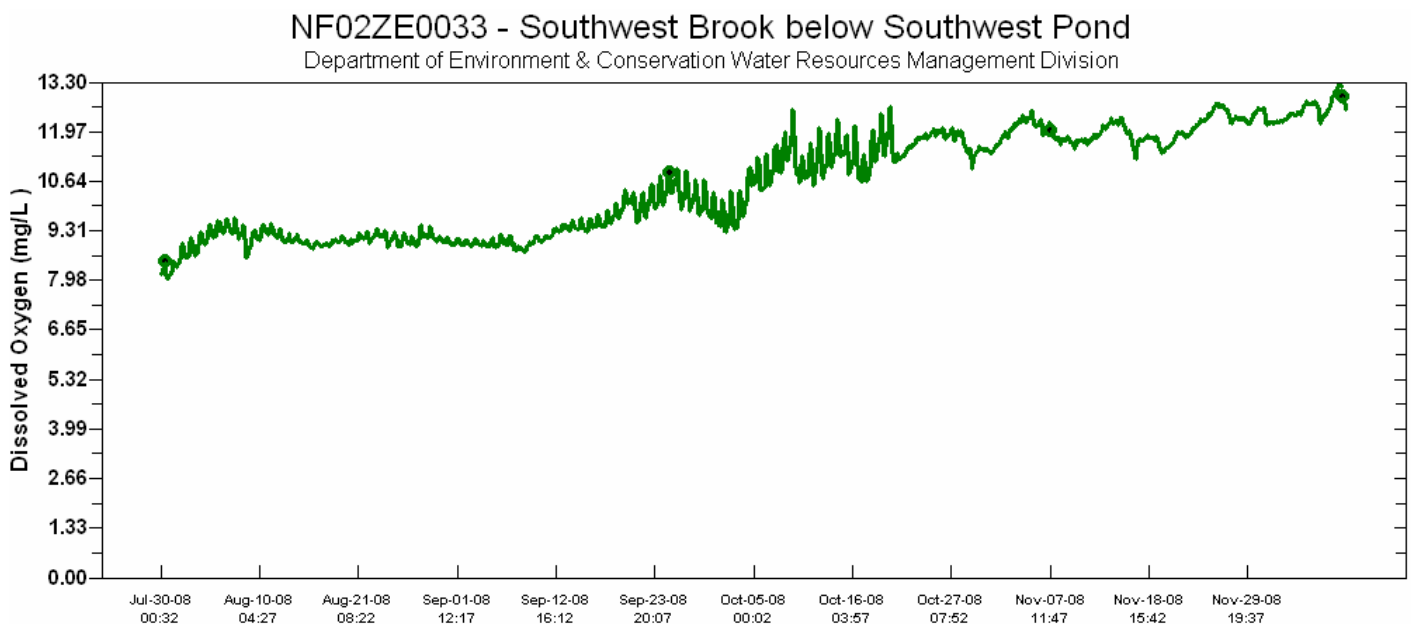
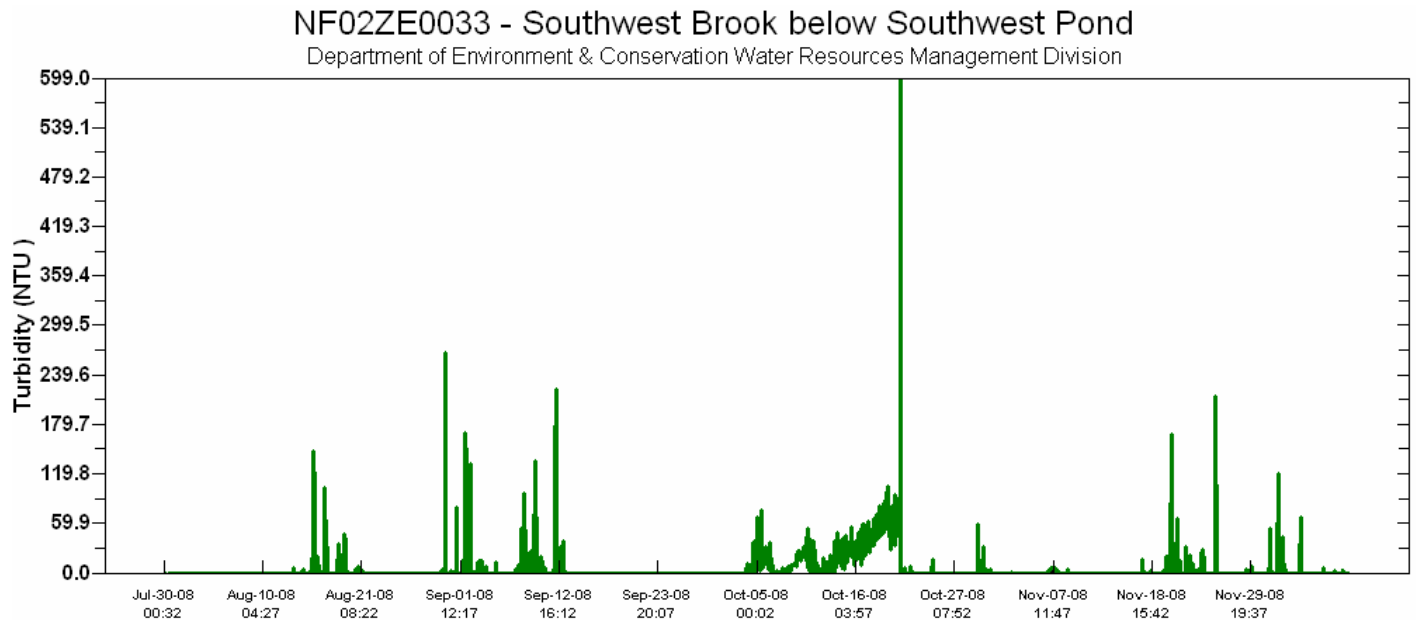
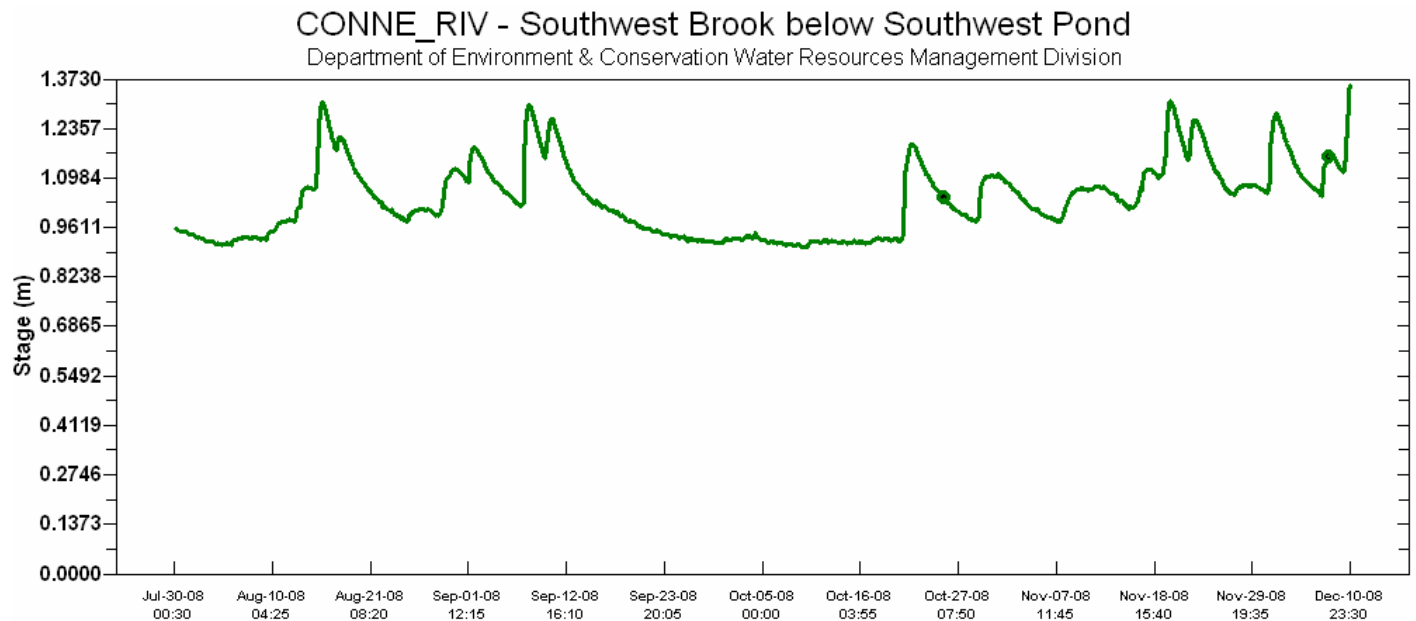


Figure 4

- The turbidity values (**Figure 5**) ranged from a minimum of 0.0 NTU to a maximum of 599.0 NTU. Some of the sustained spikes correspond to higher stage; others are likely the result of an accumulation of algae, leafy debris or biofilm on the sensor.

**Figure 5**

- The stage (**Figure 6**) or water level ranged from a minimum of 0.90 m to a maximum of 1.37 m with the highest peaks corresponding to precipitation events.

**Figure 6**

Prepared by:

Robert Wight
Environmental Scientist
Water Resources Management Division
Department of Environment and Conservation
Tel: 709-292-4280
Fax: 709-292-4365
e-mail: robertwight@gov.nl.ca