

Department of Municipal Affairs and Environment
Clean and Safe Drinking Water Workshop



GIS For Everyone?

A Custom Demonstration About
Municipal Software
Designed Just For **You**



GIS – what is it?



GIS

- GIS: Geographic Information Systems
- Many uses and applications



GIS

- How can you use it for your municipality?
 - Keep information related to your drinking water close at hand, and up to date



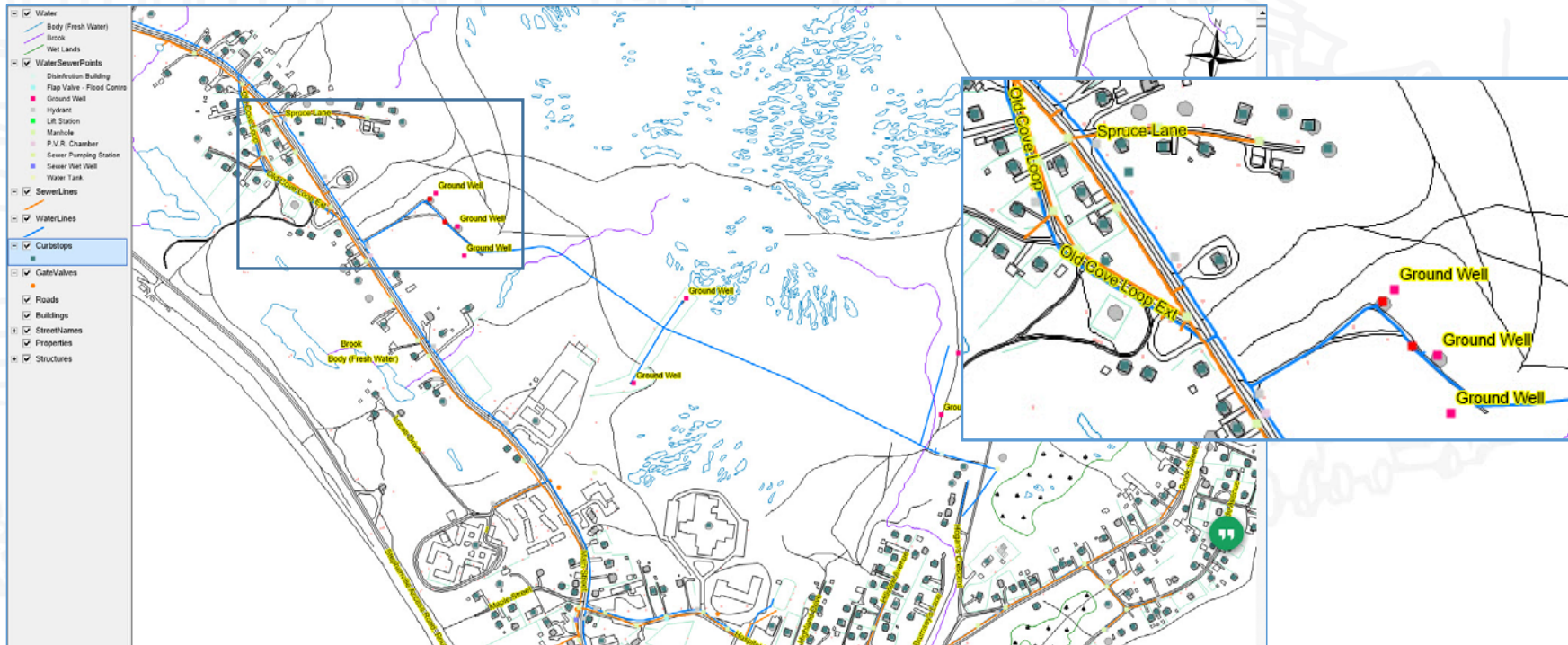
GIS for Water Resources

- “Place” items that are important for your water resources
 - Water Supply
 - Watershed protection areas
 - Wellhead
 - Wellhead protection areas
 - Water treatment facilities
 - Testing locations



GIS for Water Resources

- Town of Stephenville Crossing



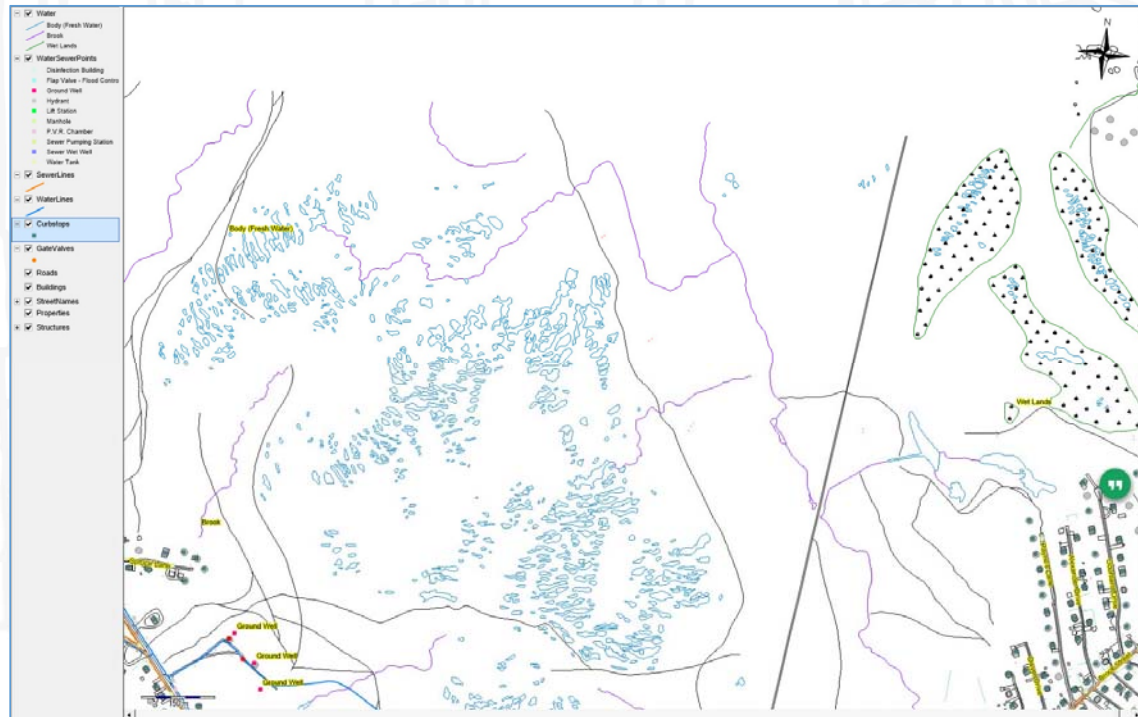
GIS for Water Resources

- Town of Stephenville Crossing



GIS for Water Resources

- Town of Stephenville Crossing



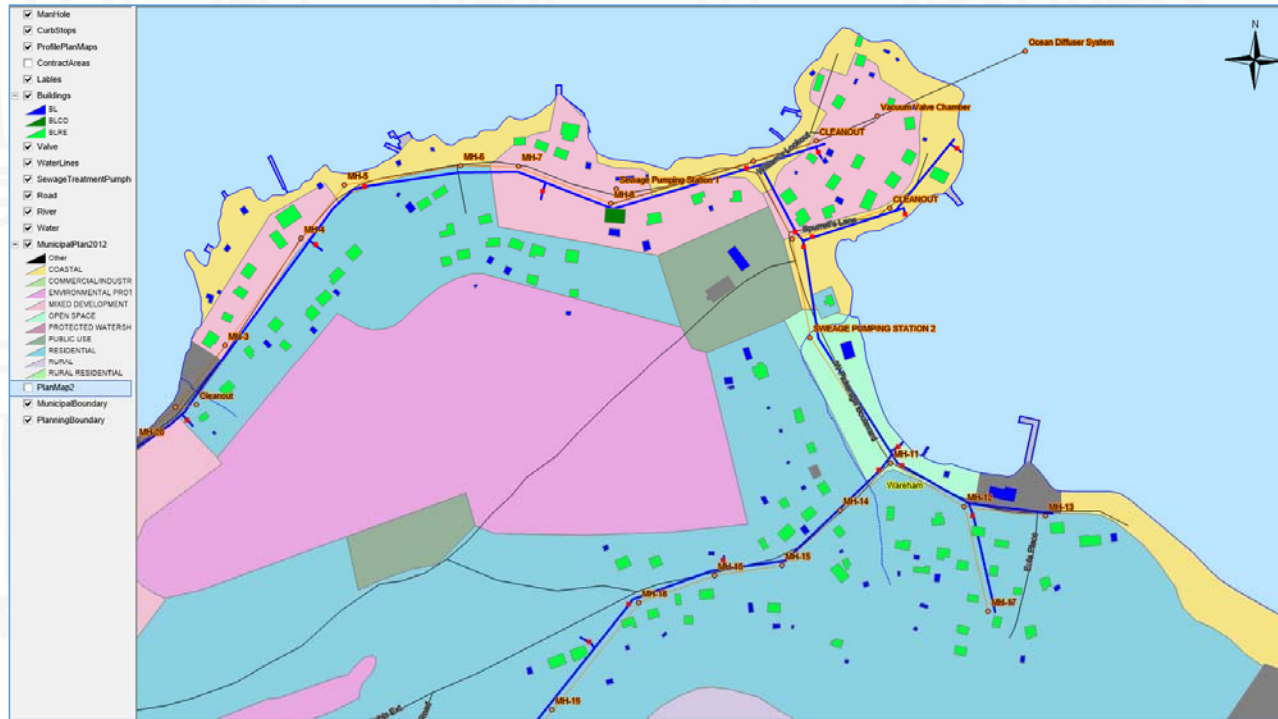
GIS for Water Infrastructure

- Place your water infrastructure so you know where it is:
 - Water lines
 - Valves, curbstops
 - Hydrants
- Symbolize different attributes or characteristics about your infrastructure
 - Different water line diameter
 - Different water line composition – ductile iron VS PVC pipe
- Attach as-built drawings to your placed infrastructure



GIS for Water Infrastructure

- Town of Centreville-Wareham-Trinity



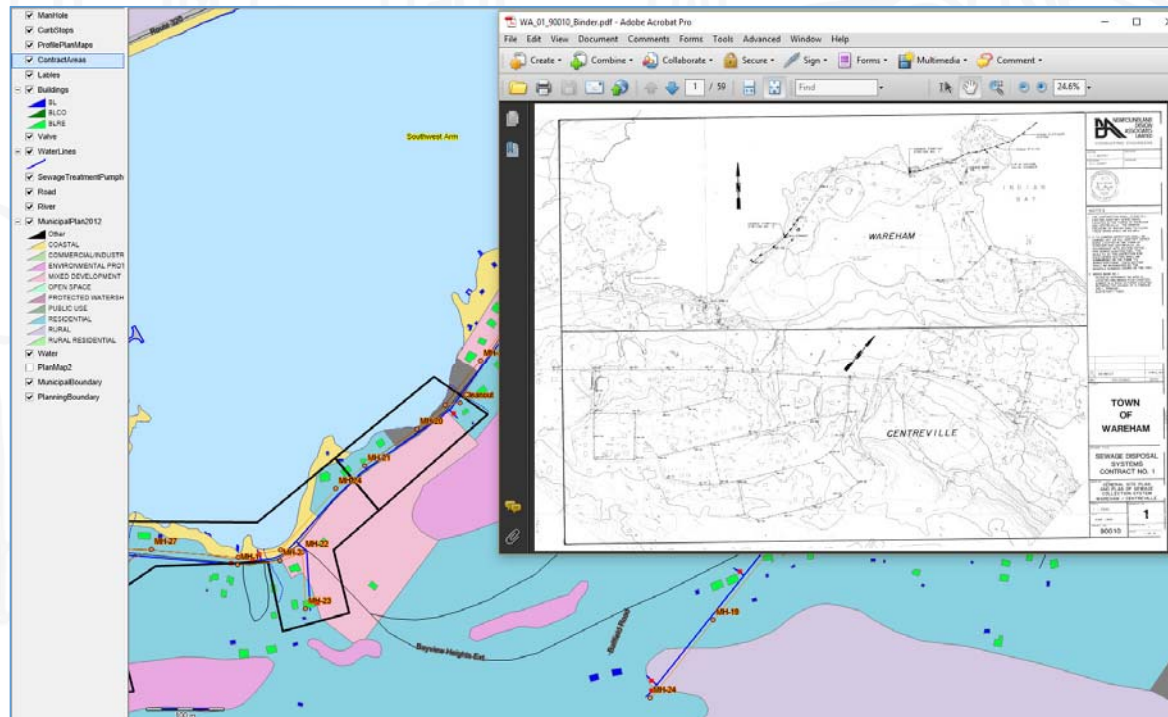
GIS for Water Infrastructure

- Town of Centreville-Wareham-Trinity



GIS for Water Infrastructure

- Town of Centreville-Wareham-Trinity



Store the information you want

- You can attach specific information to any GIS shape you want – a point, line, or polygon, for example:
 - Water pressure
 - Line Length
 - Line Diameter
 - Line Composition
 - Year Installed
 - Photos
 - Etc.



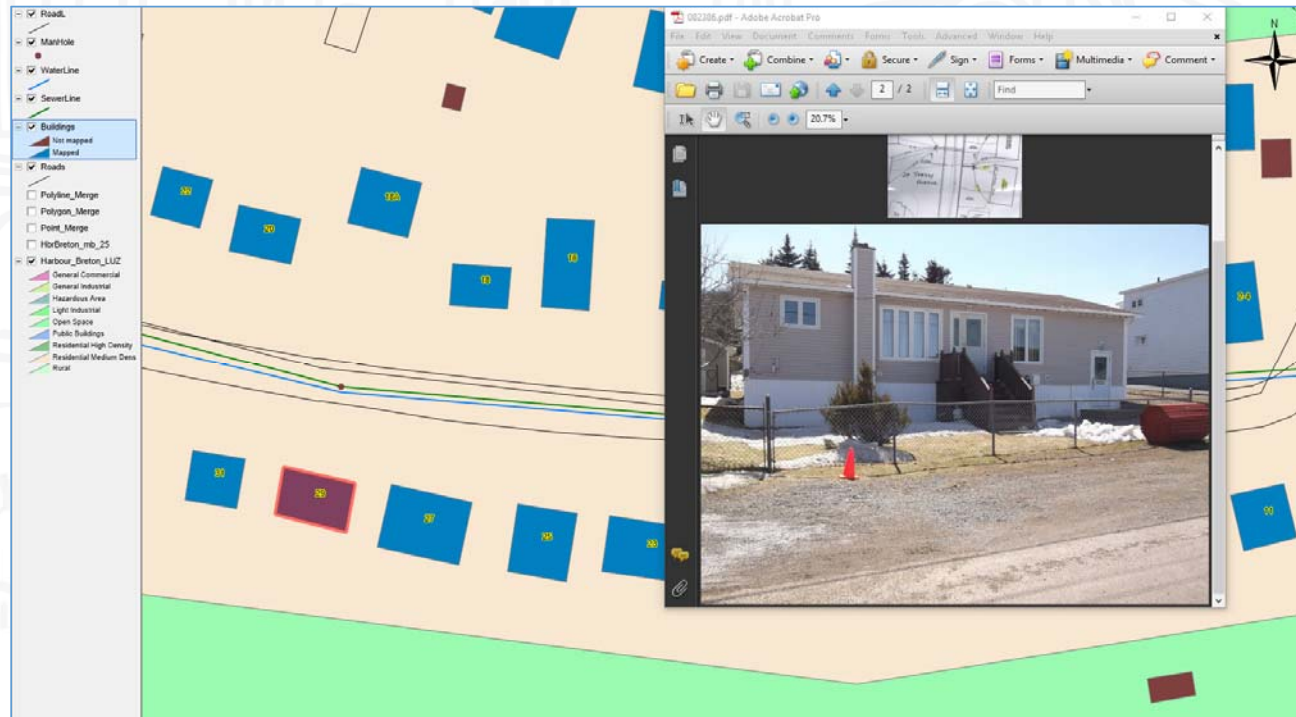
Store the information you want

- Town of Grand Falls-Windsor



Store the information you want

- Town of Harbour Breton



Store the information you want

- Town of Harbour Breton



Communicate with your customers

- Town of Truro

The screenshot displays the TownSuite Mapping software interface. The top window shows a map of a residential area with streets like Prince St and various lots highlighted in red and yellow. The bottom window shows a report titled "This is the Title" with the following data:

PID	Ref	Owner Civic Address	Mailing Address
20144655	00936235	Donford Enterprises Ltd 543 Prince St Truro	539 Prince ST Truro, NS CAN B2N1E8
20144663	00936227	Donford Enterprises Ltd 537 Prince St Truro	539 Prince ST Truro, NS CAN B2N1E8
20144671	00300713	3086385 Nova Scotia Limited 523 Prince St Truro	29 Pattillo AVE Truro, NS CAN B2N1K5
20144689	03290131	3086385 Nova Scotia Limited	29 Pattillo AVE Truro, NS CAN



GIS is a powerful tool

- Use it to
 - Visualize where your infrastructure is located throughout your municipality
 - Plot points to track water leaks to identify possible trends
 - Visualize planned maintenance projects
 - Visualize planned replacement projects
 - Visualize planned new asset projects



What else can I use GIS for

- Within your municipality there could be an infinite number of applications
- You can place many other important geospatial information to access
 - Property boundaries with owner information including assessment values
 - Building permit history
 - Zoning information
 - Venues of significance like recreation, heritage, tourism, government venues and facilities



What else can I use GIS for

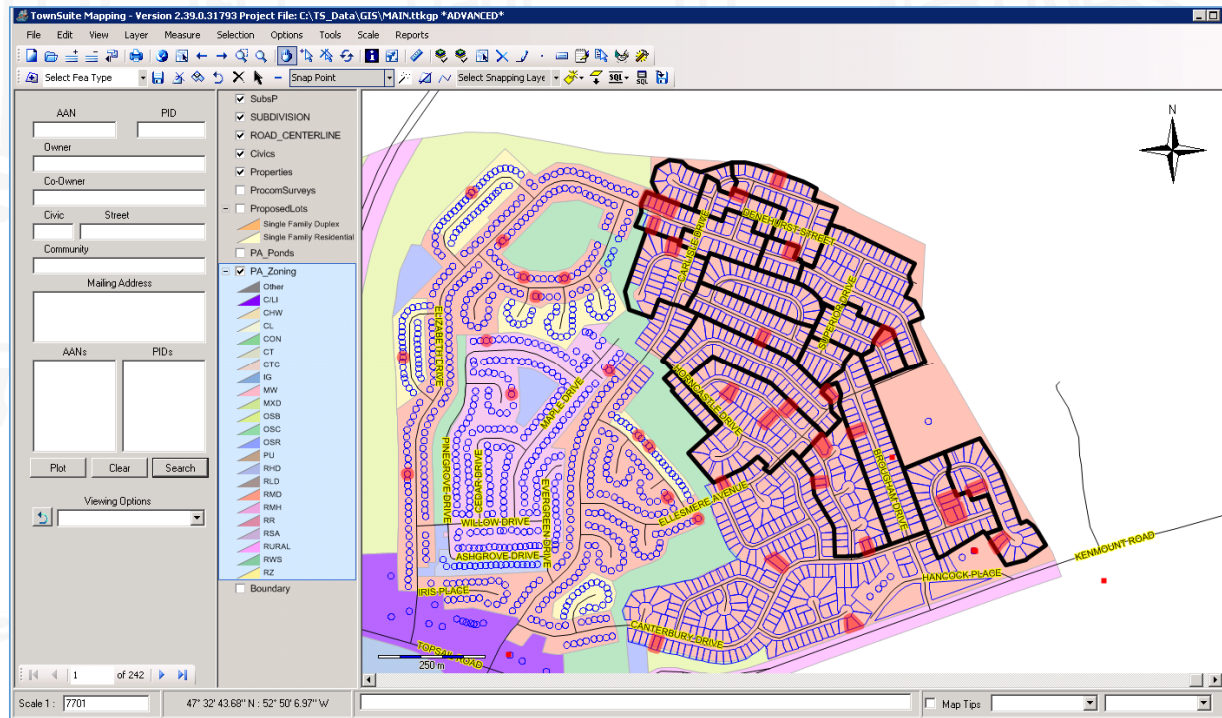
The screenshot displays a GIS application interface. On the left is a metadata panel with fields for AAN (5125-0469-1-2770), PID (166820), Owner (WHITE GEORGE), and Mailing Address (557 INDIAN MEAL LINE, Anytown, NJ, ATK 1G5). Below this are AANs and PIDs lists, a search button, and a viewing options dropdown set to 'ASSESS VALUES'. The central map shows a red-shaded parcel with a yellow 'Indian Meal Line' and a blue 'Water Polygon'. A legend on the left lists various layers like 'StreetLights', 'Civics', 'Water Infrastructure', 'roads', 'Firehydrants', 'Survey', 'Water Polygon', 'Properties', 'BuildingPolygon', 'zoning', and '00In10_7_0_HD_148000'. A north arrow is in the top right. At the bottom is a data table with columns for JURI, AAN, ROLL_TYPE, YEAR, ROLL_FLAG, TAXSTATUS, LEG_CODE, LANDVALUE, BLDGVALUE, MIMFVALUE, ACRES, PUBVALUE, and three PUBVALUE columns.

JURI	AAN	ROLL_TYPE	YEAR	ROLL_FLAG	TAXSTATUS	LEG_CODE	LANDVALUE	BLDGVALUE	MIMFVALUE	ACRES	PUBVALUE	PUBVALUE	PUBVALUE	PUBVALUE
	5125-0469-1-2770		2010			TMR1	0	0	0	0	165400	0	0	0
	5125-0469-1-2770		2011			TMR1	0	0	0	0	188900	0	0	0
	5125-0469-1-2770		2012			TMR1	0	0	0	0	188900	0	0	0
	5125-0469-1-2770		2013			TMR1	0	0	0	0	252800	0	0	0
	5125-0469-1-2770		2008			TMR1	0	0	0	0	124100	0	0	0
	5125-0469-1-2770		2009			TMR1	0	0	0	0	124100	0	0	0



What else can I use GIS for

- Town of Paradise

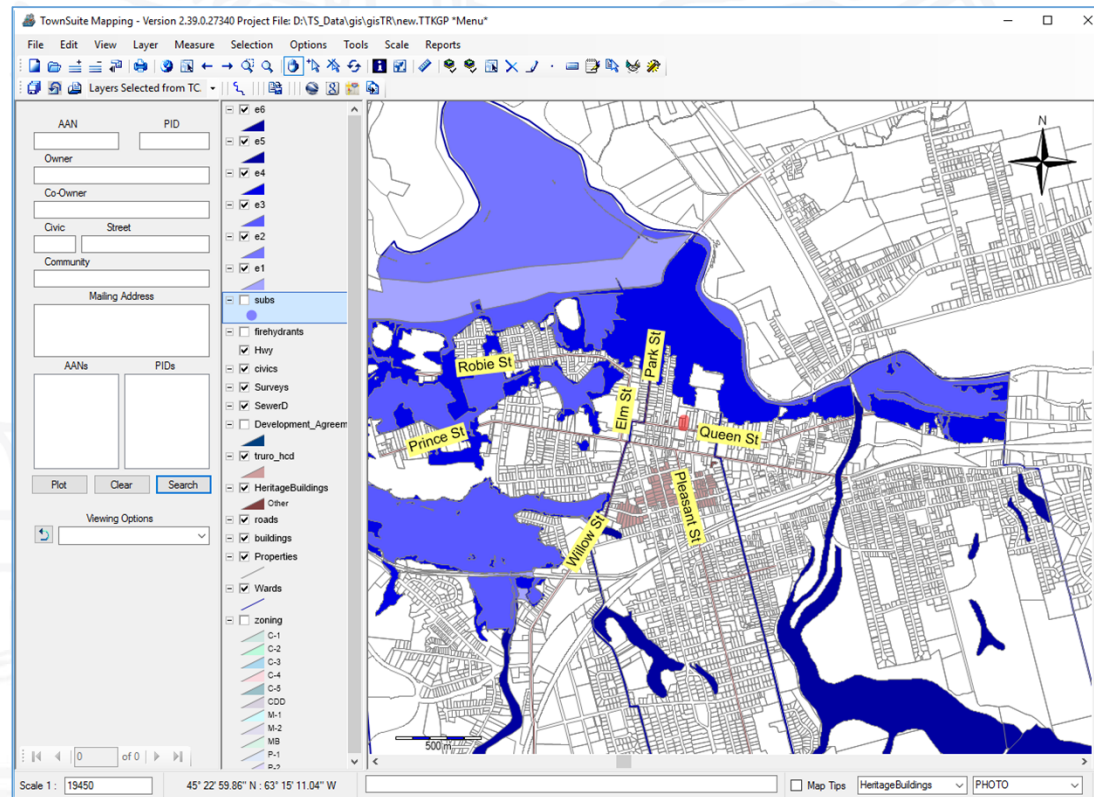


What else can I use GIS for

- Nova Scotia
- Manitoba



What else can I use GIS for



What else can I use GIS for

- Link with other municipal information or systems





QUESTIONS?

