



Water Resources
Management
Division

Department of
Municipal Affairs
and Environment

Understanding your Water Supply Area: Monitoring & Inspections

Overview

- Purpose
- Prep
- Monitoring
 - Who? What?
When? Where?
- Reporting
- Signage
- Inspections
- Resources
- Town of
Carbonear
experiences

What does monitoring mean?

- Surveillance of activity in the water supply area
- Purpose: prevent &/or identify water quality impairment



Preparation

- Field book & pencil
- Camera
- GPS/Map
- Measuring tape 30m
- Cellular phone
- Safety equipment
- Permits



Monitoring

“to watch, observe, listen to, or check (something) for a special purpose over a period of time”

Who is doing this?

- Towns; councilors? Operators? Volunteers? Enforcement officers?

When? How often?

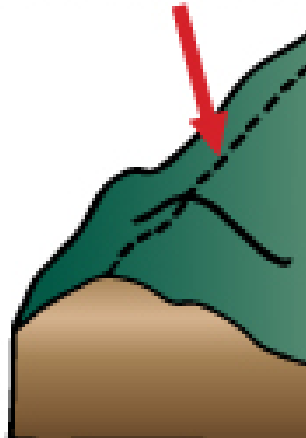
- Depends on...
 - Capacity
 - Activity
 - Size

Monitoring

“to watch, observe, listen to, or check (something) for a special purpose over a period of time”

where?

Watershed area boundary



Monitoring

“to watch, observe, listen to, or check (something) for a special purpose over a period of time”

What?

- Human activity
 - ATVs, cutting, cottages, trail blazing, snowmobiling, etc.
- New or illegal activity
- Buildings/
infrastructure
condition
- Dumping, Fuel spills
- Condition of...
 - Signage, trails/roads
 - infrastructure
- Erosion/Sedimentation
issues
 - Runoff, culverts,
construction sites, silting,

Reporting

Write it down!

Paper trail is very important

- Date, name, community name, water supply
- General description of trip; sketch
- Specific observations or areas checked
 - Signs needed?
 - Permitted activities checked
 - Runoff issues; road conditions
 - Unauthorized activity identified
- Photos
- Reporting processes can look different !

Signage

- Trails/roads
- Gates
- Bridges
- CH buildings



Inspections

“to view or look over closely in critical appraisal” 1

- Not regular surveillance; specific to a location or issue
- May need to be more diligent about reporting
- Likely a permitted activity



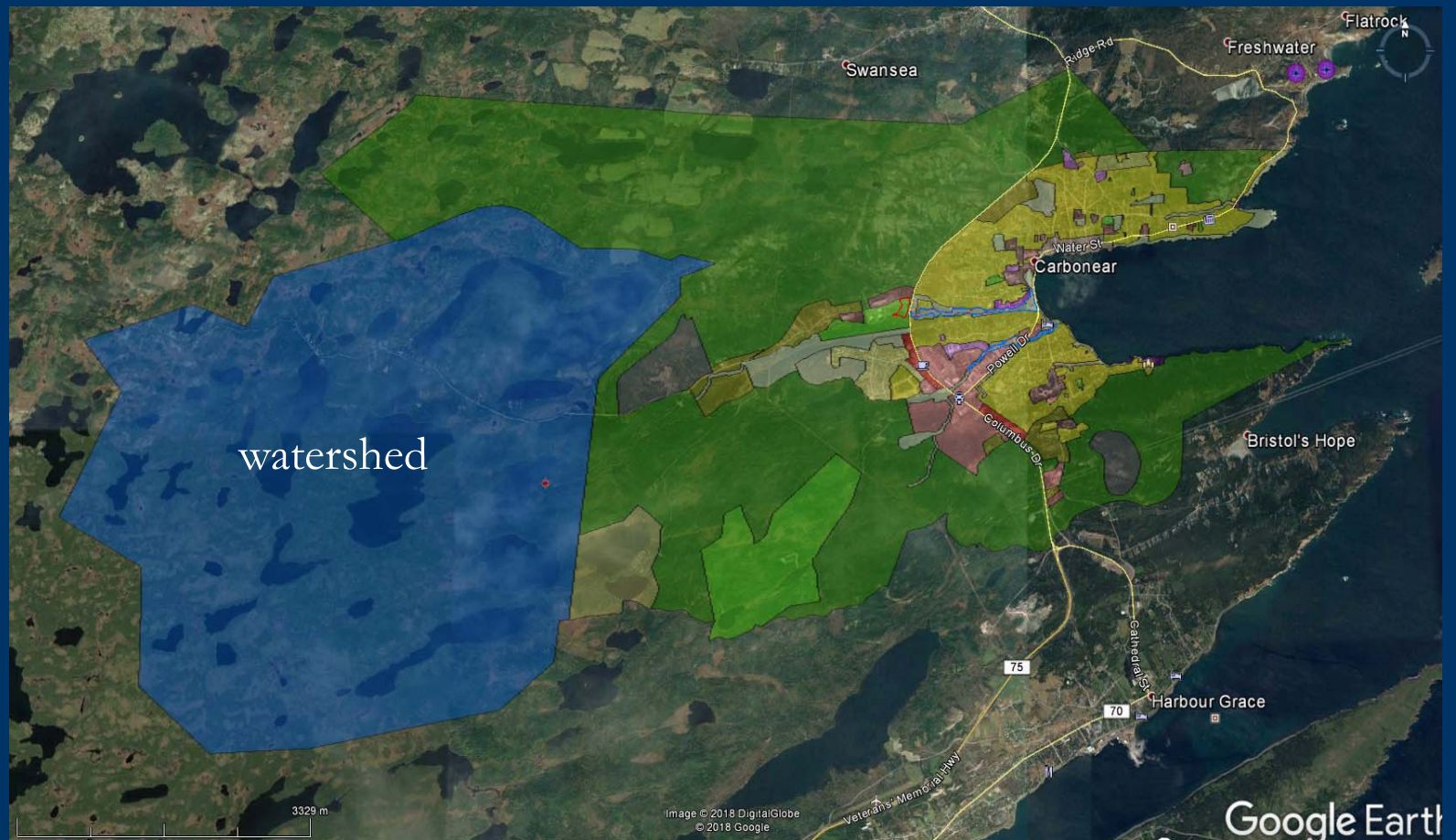
Resources Available

- SOP monitoring & inspection
- Inspection form template
- Water supply area boundaries mapping & Online Services (Portal)
- Public Outreach items
- WSA sensitivity analysis
- WSA activity tracking
- WRMD staff

Welcome Gord!

Intro

- Municipal Plan & Associated Regs
 - Watershed area is within Carbonear's planning area

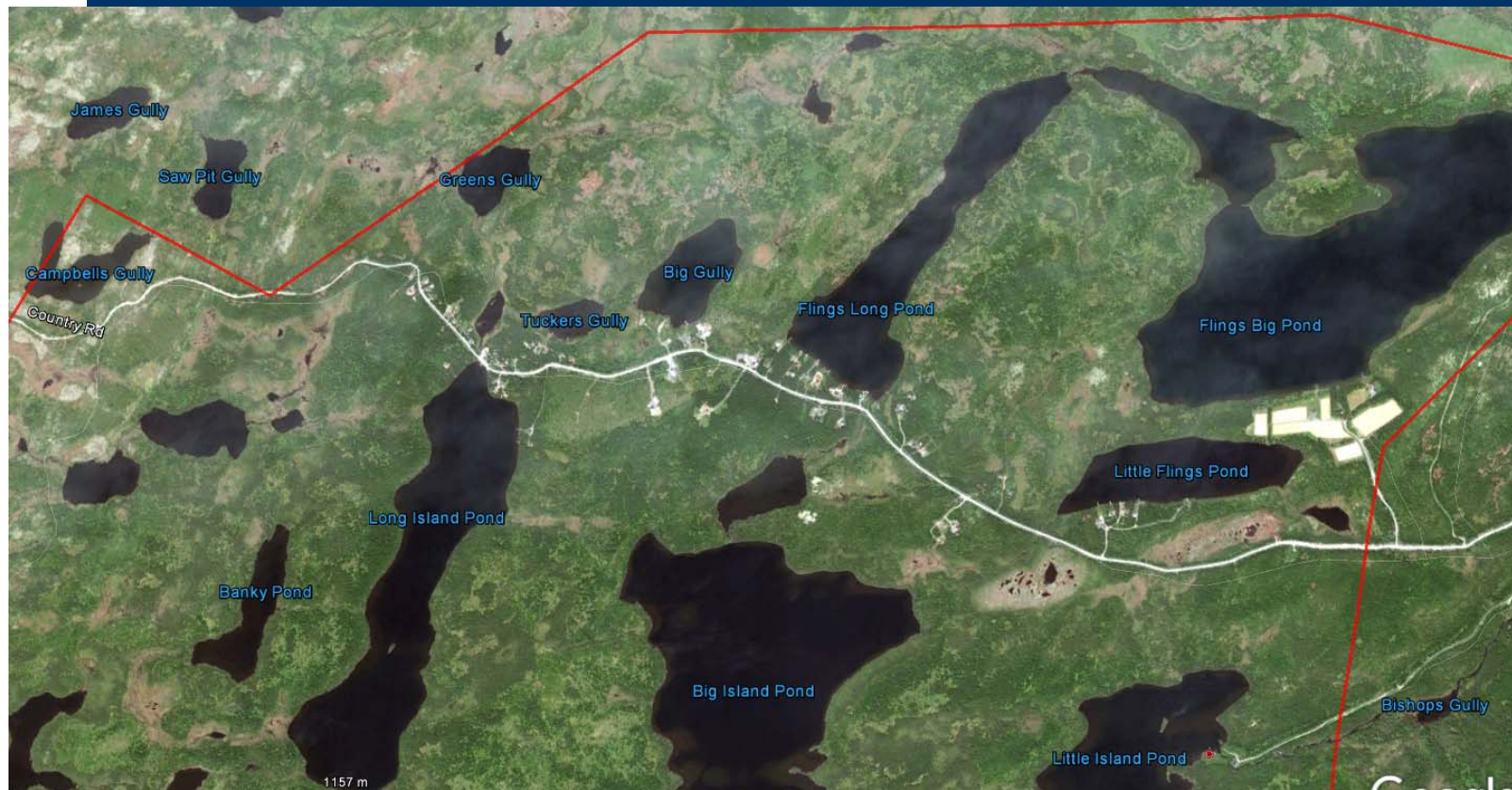


Water Resources
Management
Division

Department of
Environment &
Conservation

Monitoring

- Weekly visits
 - 6kms of road that is patrolled
- Carbonear's water supply has high cabin development
 - 50 cabins + travel trailers
- Monitoring can increase due to specific events/complaints



My toolkit

- Trail Cameras
- Pictures/GPS/measuring tape
- Government Contacts (like Christa!)
- Removal orders, stop work orders

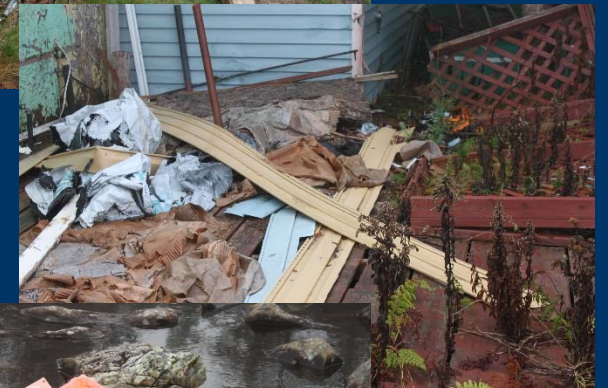
Reporting

- Open a file on each item
 - Attach pics, complaints, coordinates, etc.
- Tracks progress
 - written warning, removal orders
 - +/- conclusions

Case Study #1

November, 2016

Enforcement: Clean up
was completed after
contacting the trailer
owner



Case Study #2

- Trailer appears to have an unapproved septic
- Contacted Service NL
- Removal notice issued; tank removed & restored



Thank you!

- Christa Skinner, WRMD, Dept. of Municipal Affairs and Environment
 - (709) 729-4817
 - christavskinner@gov.nl.ca
- Gord Parsons, Municipal Enforcement Officer, Town of Carbonear
 - (709)589-5038
 - carbonear@nf.aibn.com

Questions?