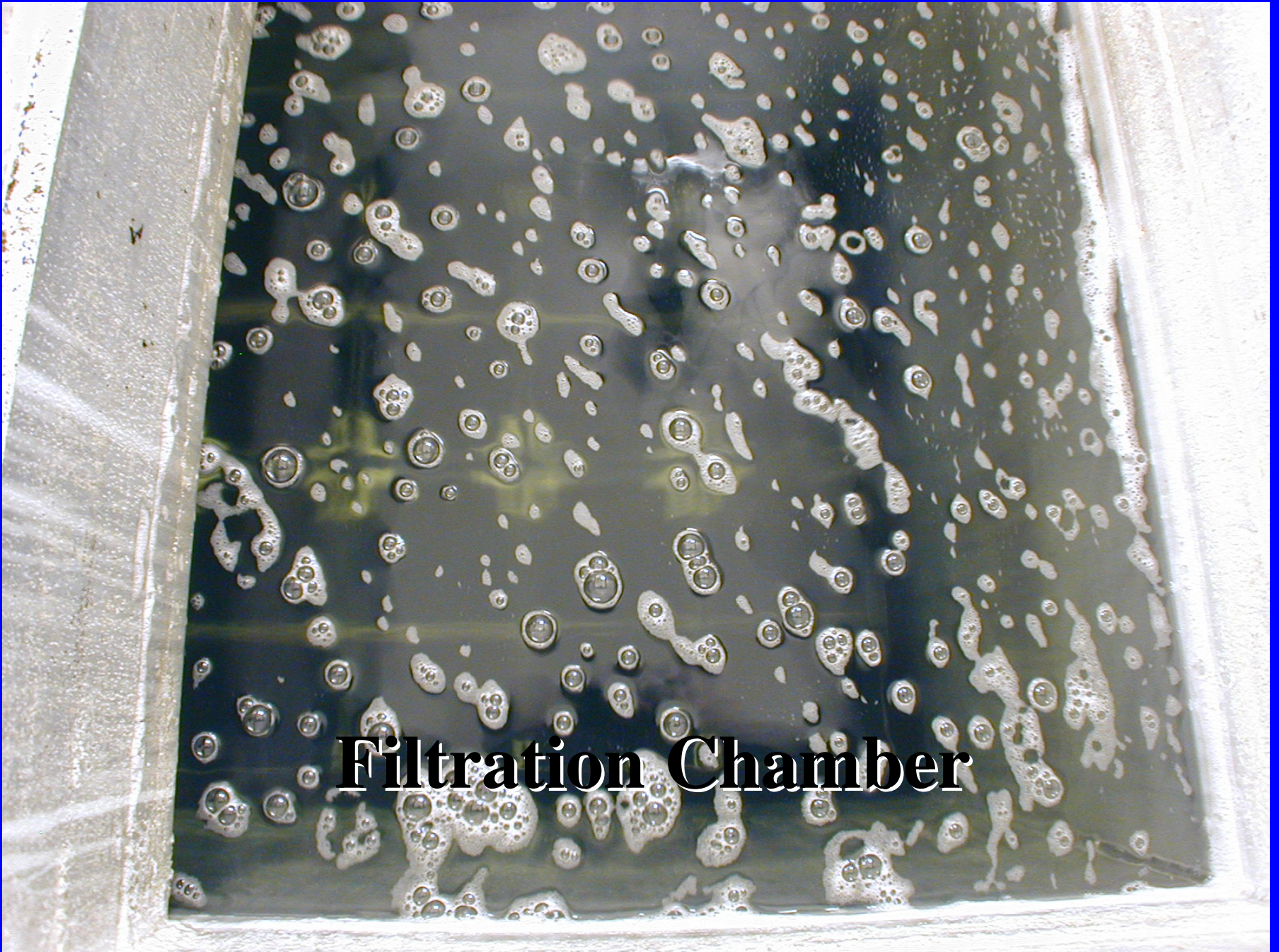


**Filter Inlet from
Overflow Troughs**



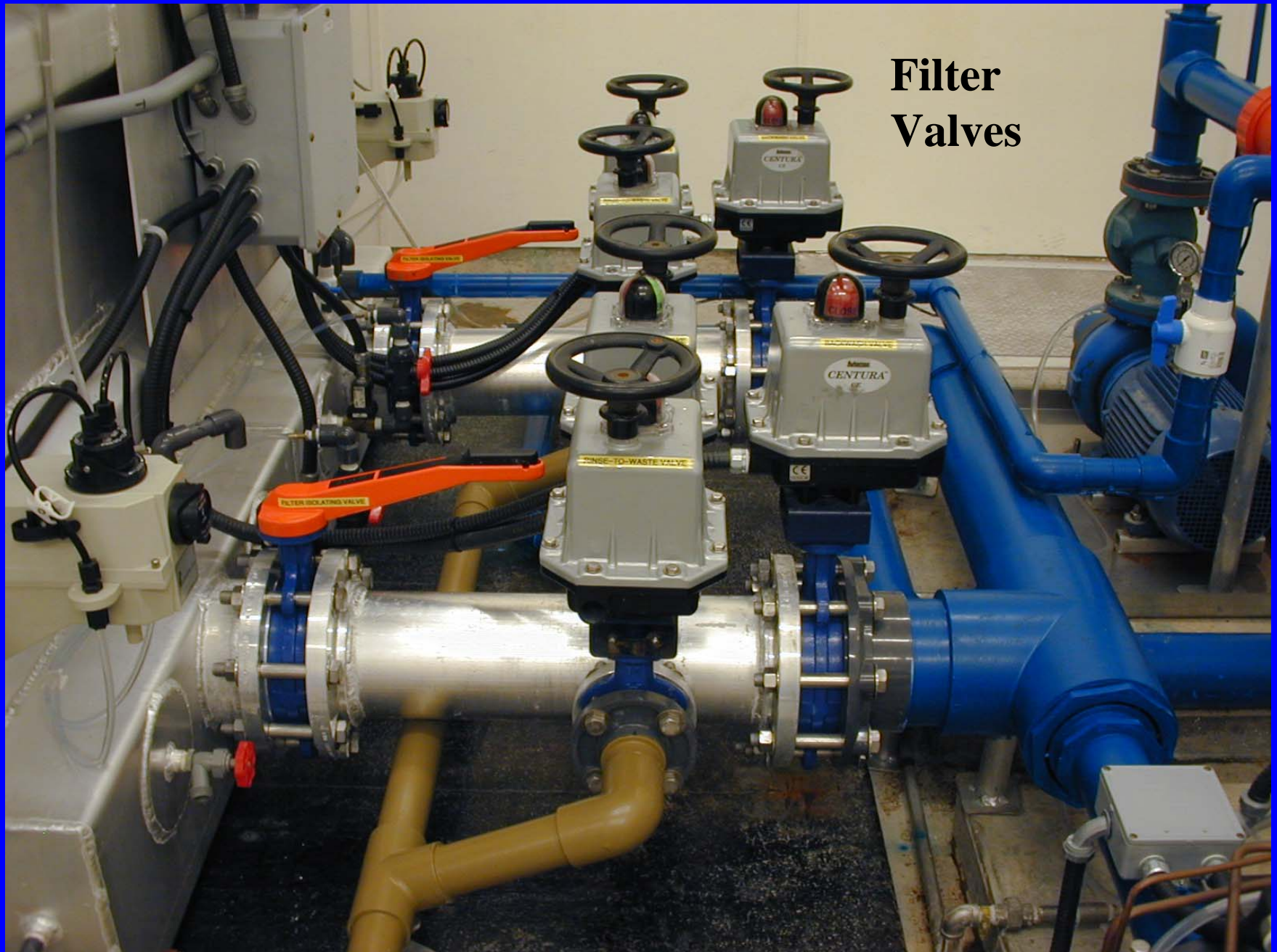


Filtration Chamber

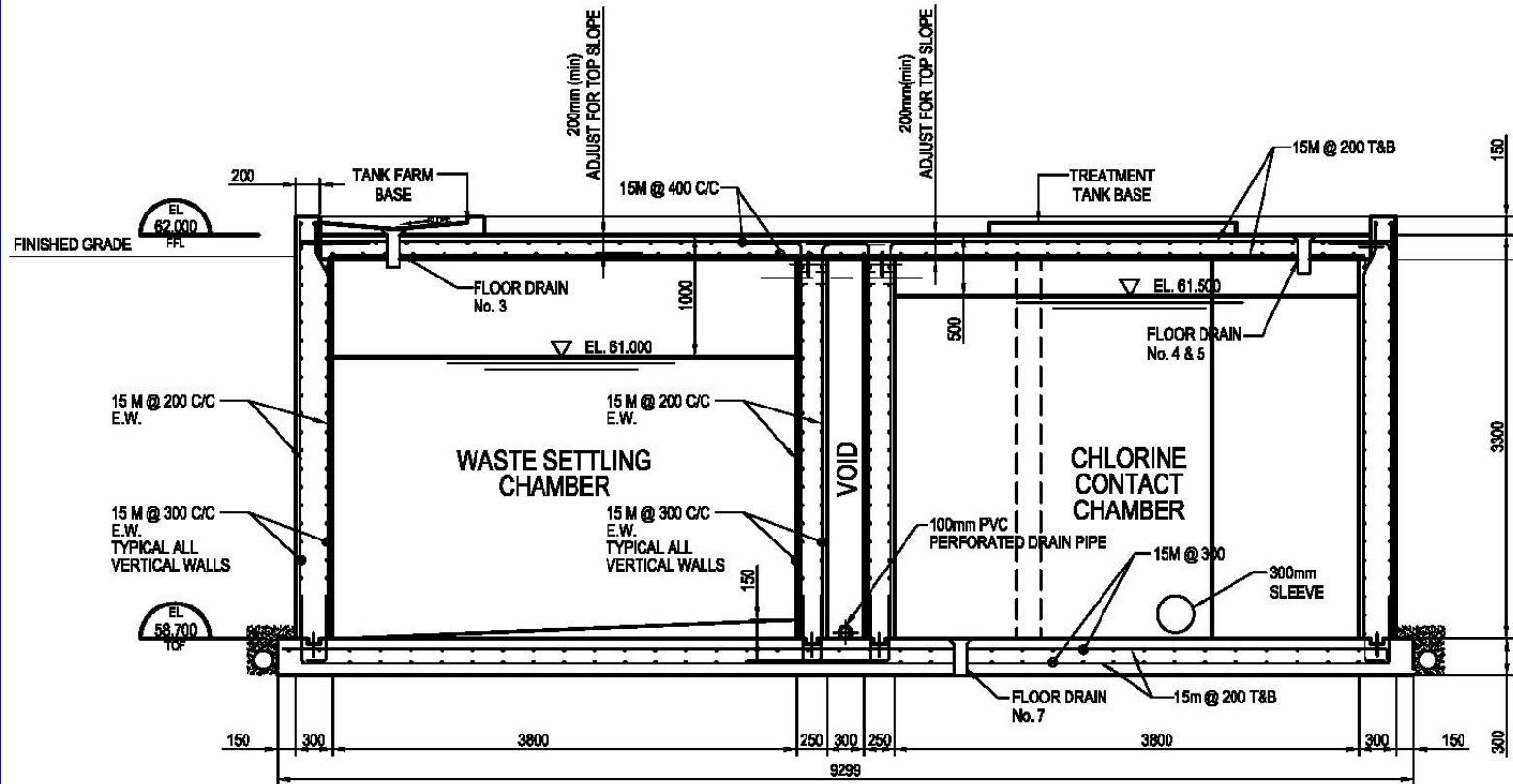


**Filter Effluent
Control Valves
& Pipework**

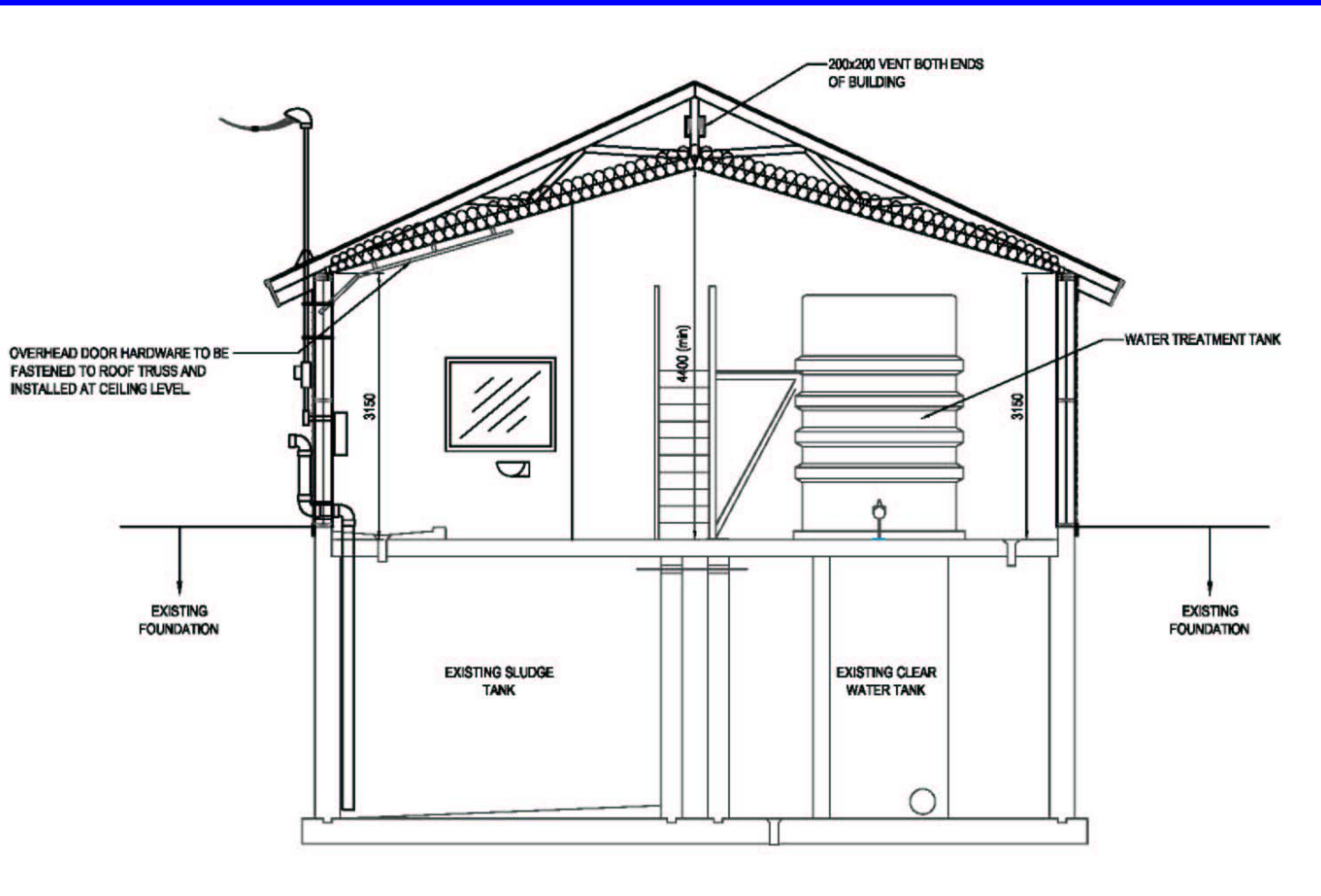
Filter Valves

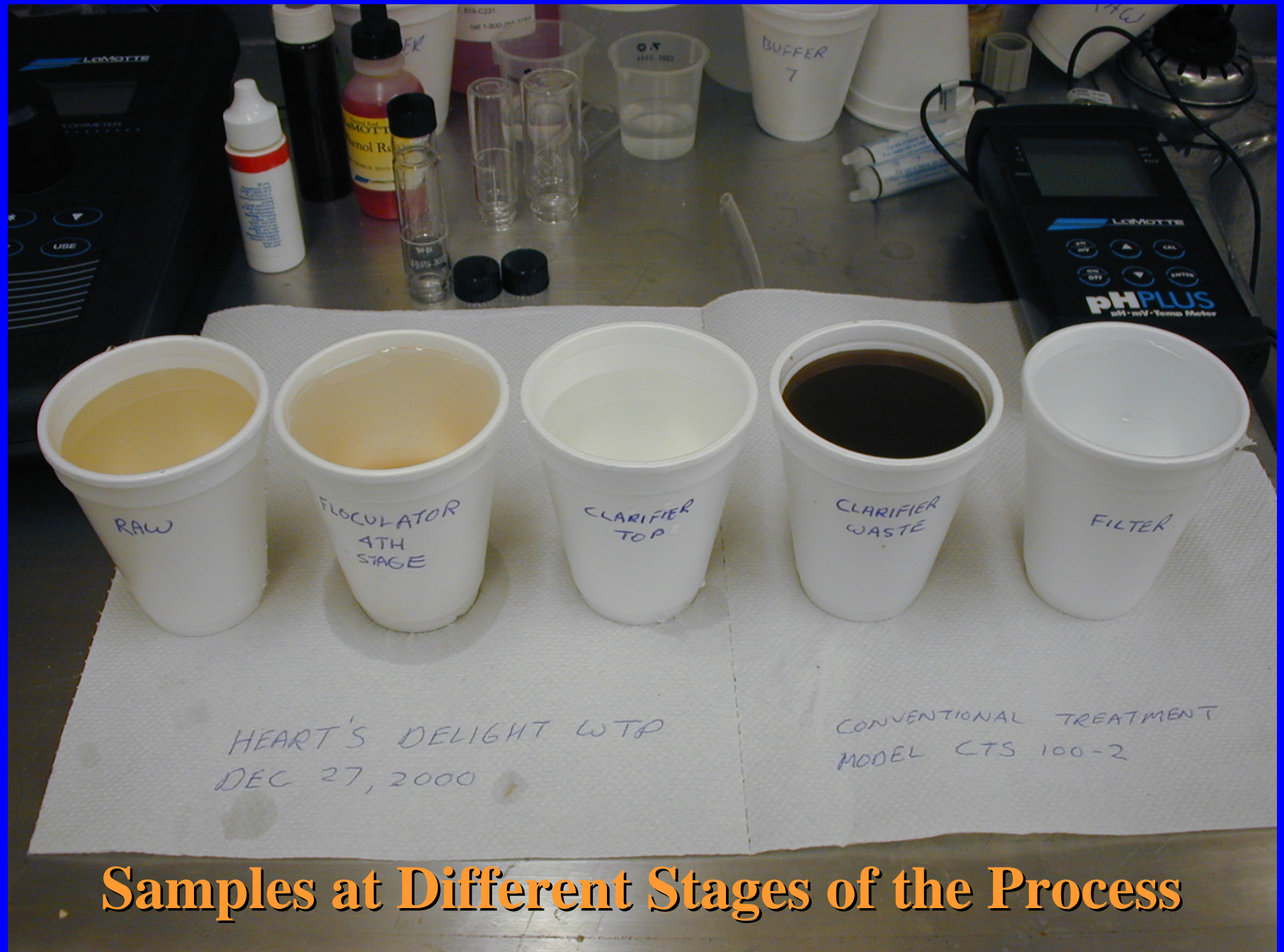


SECTION THROUGH WASTE SETTLING CHAMBER AND CHLORINE CONTACT CHAMBER



SECTION THROUGH BUILDING AND TANKAGE





Samples at Different Stages of the Process

Package Conventional Treatment System CTS



Designed Access for Operation & Maintenance



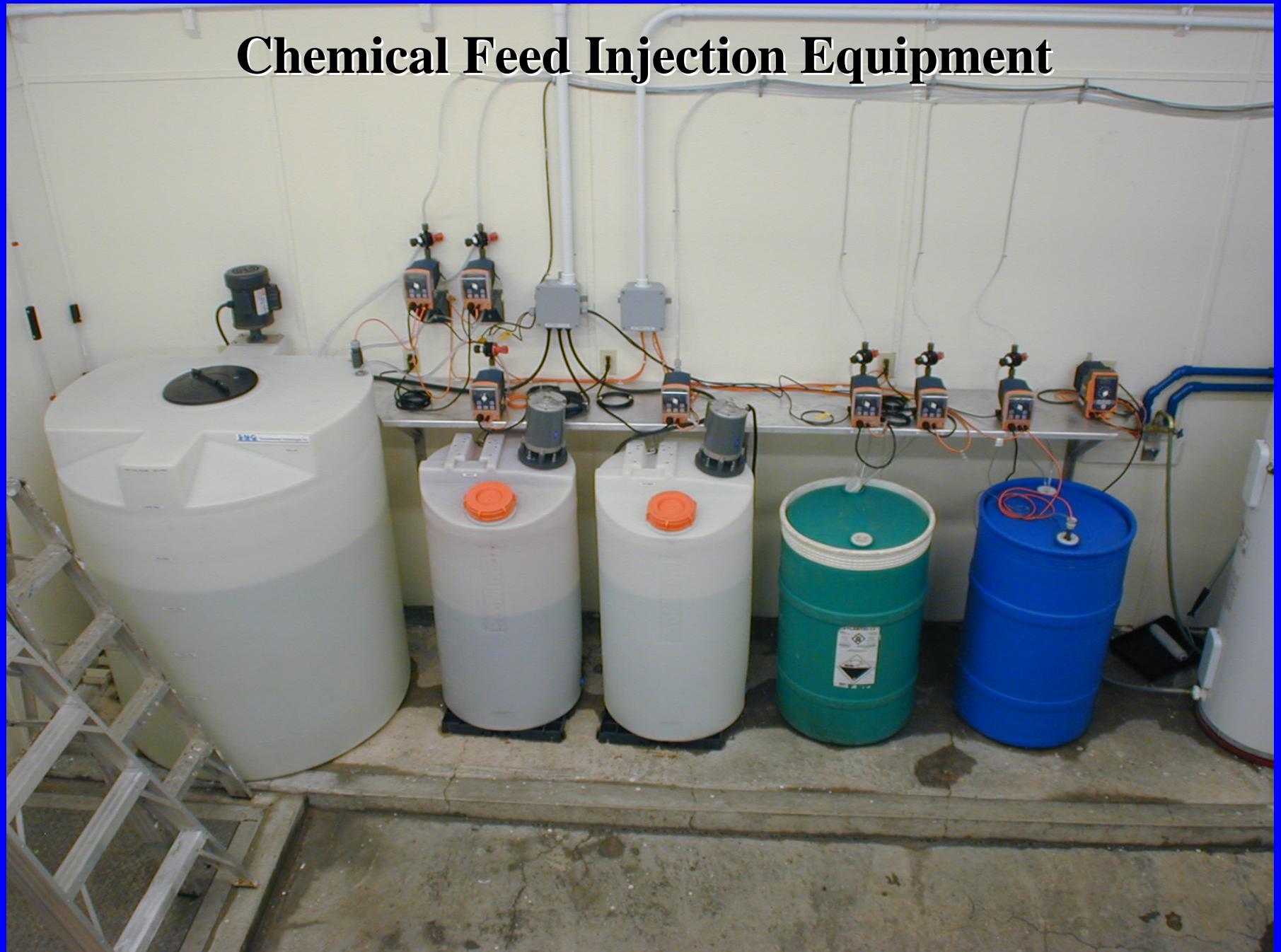
Environmental Technologies inc.

CTS 100-2





Chemical Feed Injection Equipment



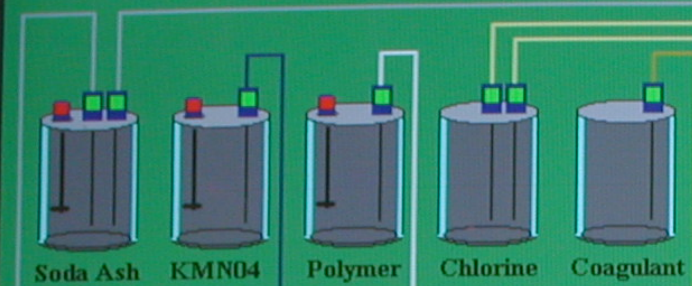
Operators Office



Setpoints Start Plant Stop Plant Fault Reset

Comms = OK Time: 10:47:38 PM Date: 01/17/01

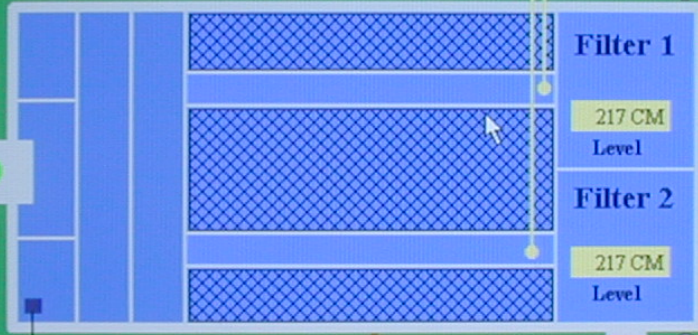
Exit



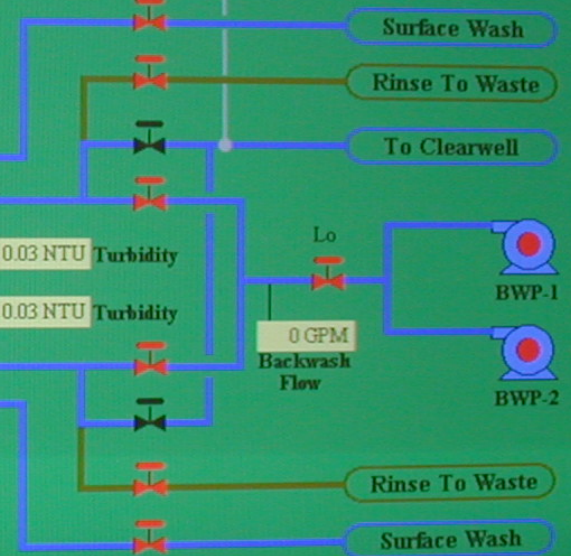
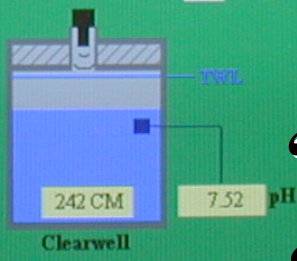
Filter 1 Status	Plant Control	Filter 2 Status
Equipment in Auto	Equipment in Auto	Equipment in Auto
Backwash On	Start Level 280 CM	Backwash On
	Stop Level 305 CM	
	BWash Level 82 CM	



Flow 76 GPM
pH 5.51
Turbidity 0.5 NTU
Temp. 2 Deg C



5.74
Coag pH

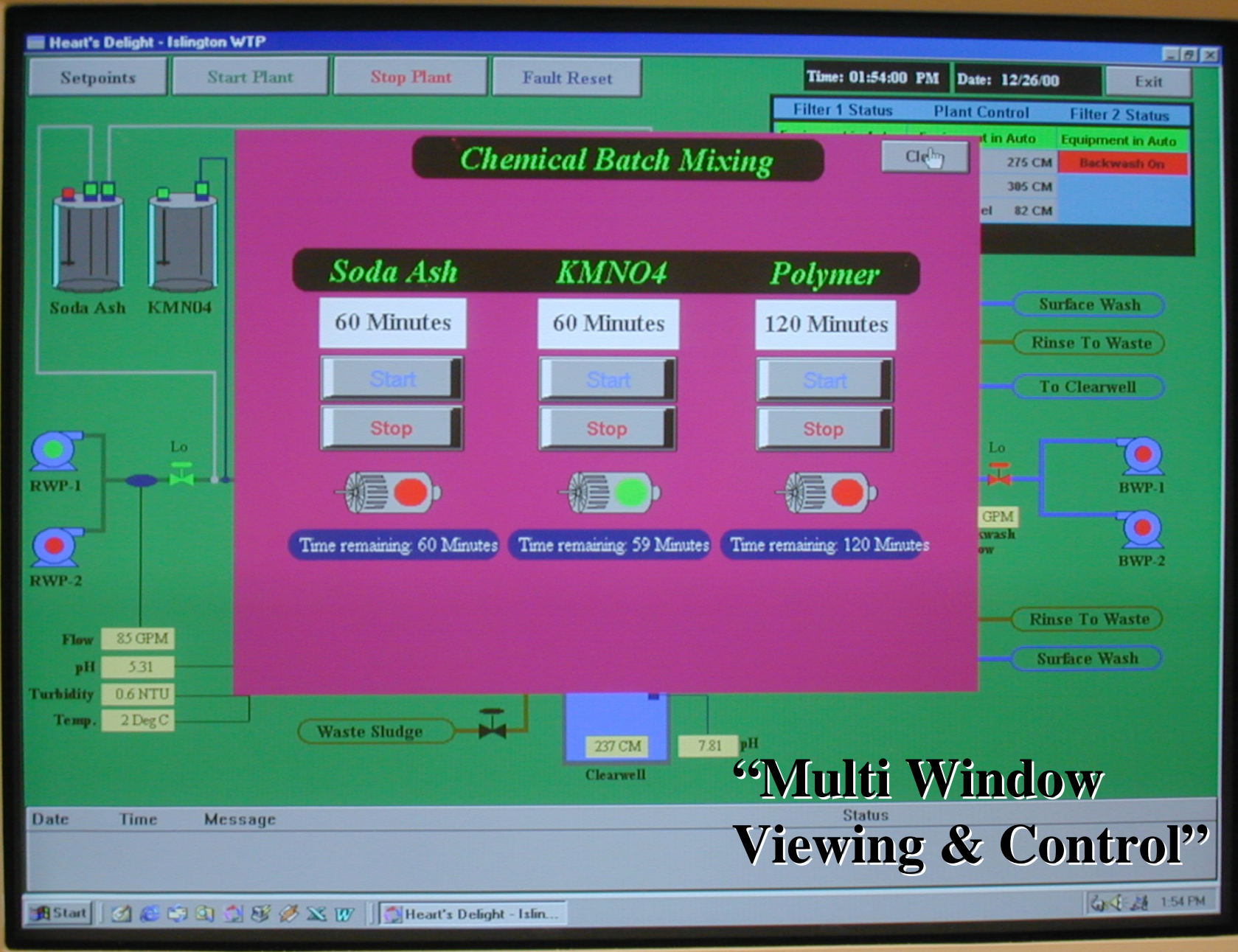


Lo
0 GPM
Backwash Flow

Waste Sludge

“Computer Control & Monitoring”

Date	Time	Message	Status



“Multi Window Viewing & Control”



Main Control Panel & PLC

Main Control Panel & PLC



**Town of Heart's Delight - Islington.
Conventional Water Treatment Plant.
FACT SHEET**

Capacity: 100 Gpm.

Capital Cost: \$695,000.00 + Eng.

O & M Cost: \$45,000.00 annually.

Commissioned December, 2000.

Building Footprint: 126m² (1360ft²)

Treatment Plant Footprint: 18m² (190ft²)

Grand Opening

MAYOR STAN REID



Town of Heart's Delight - Islington Water Treatment Plant

Question and Answer Period



*“Fantastic View
from the Plant Site”*