



Valves

Valves

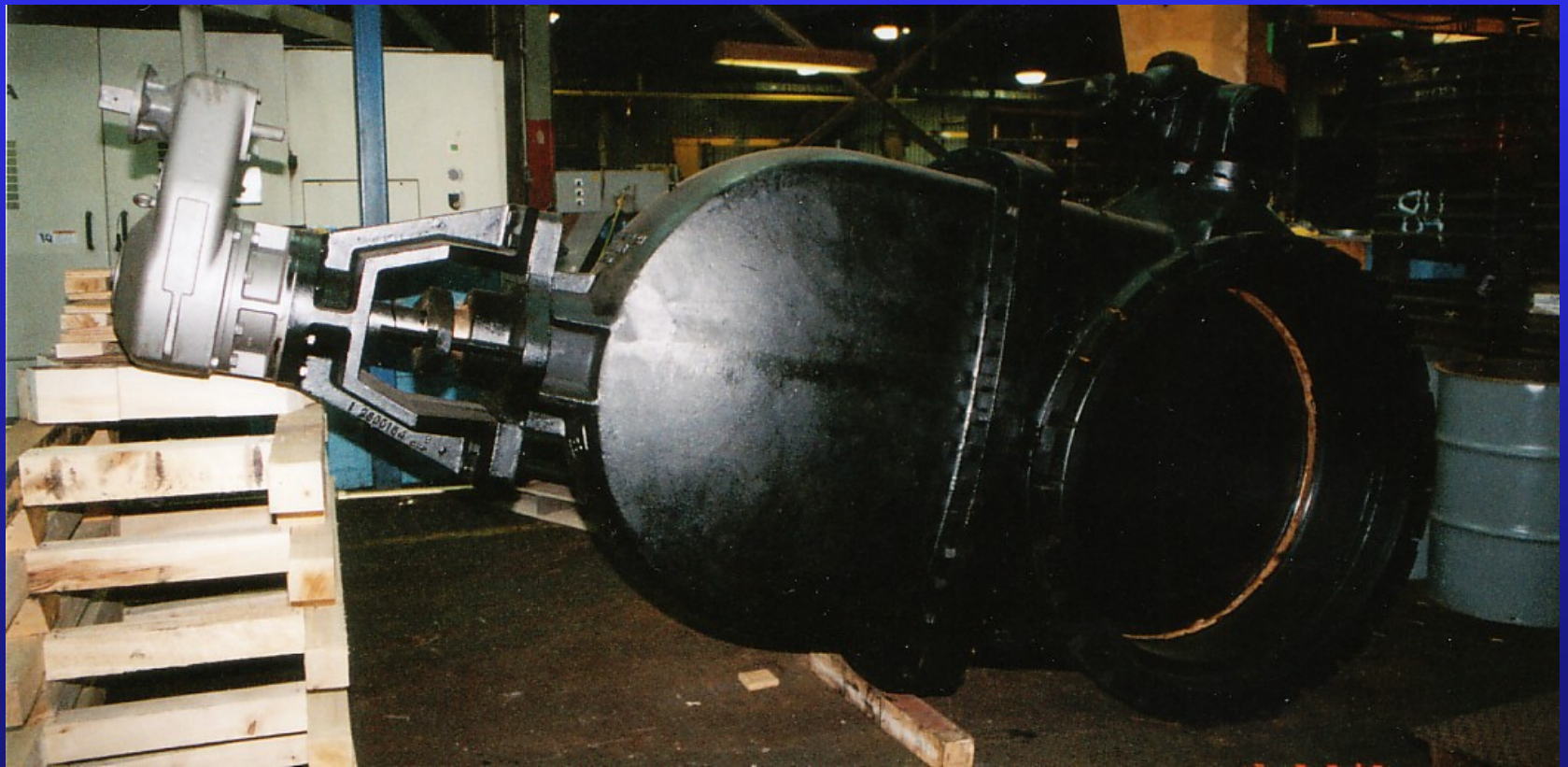
Valves

Valves

Valves Used in Underground Applications

- *Gate Valves*
 - *Metal Seated*
 - *Resilient Seated*
- *Butterfly Valves*
- *Plug Valves*

Metal Seated Gate Valves



Metal Seated Gate Valves

- *Used in large diameter applications*
- *Available in sizes - 144"*
- *Manufactured to AWWA C-500*
- *Allowable Leakage*

Metal Seated Gate Valves

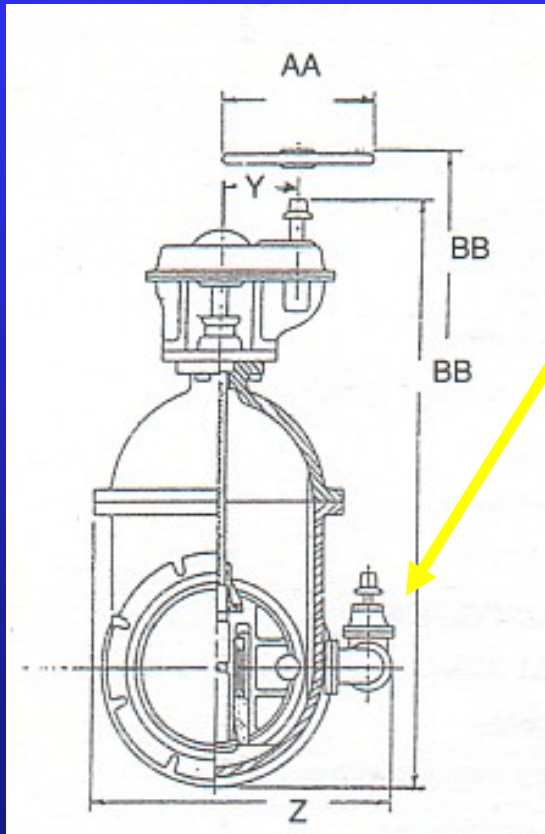
- *Applications*
 - *Potable Water*
 - *Non-Potable Water*
 - *Sewage*
 - *Water Treatment*
 - *Wastewater Treatment*
 - *Forcemain Water*
 - *Forcemain Sewage*

Metal Seated Gate Valves

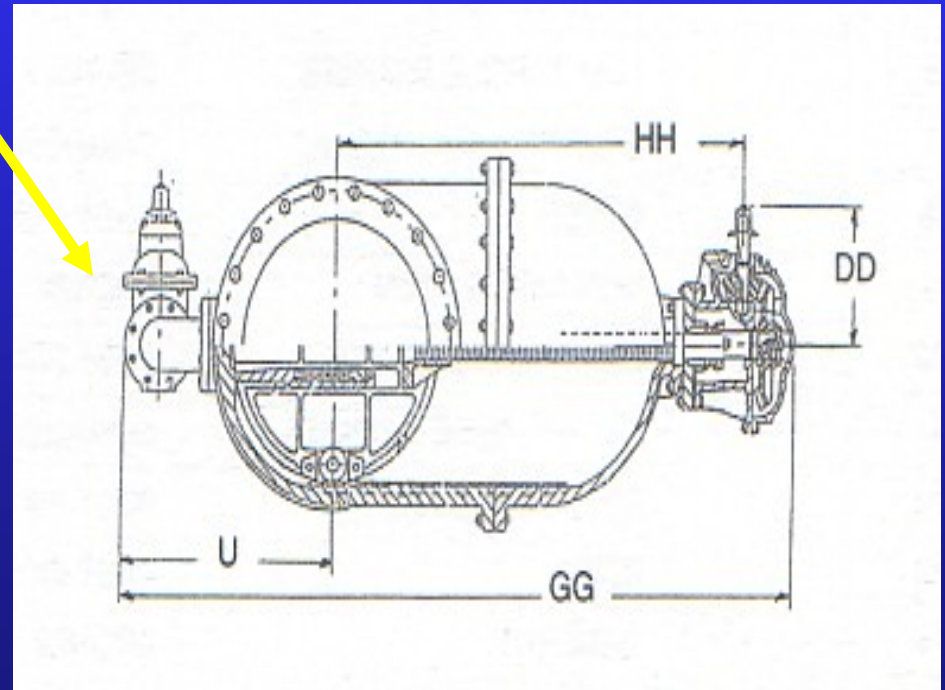
- *Due to weight of disc and friction between seats, bypass valves required on large diameters to equalize pressure*

Metal Seated Gate Valves

Bypass Valves



Spur Gear



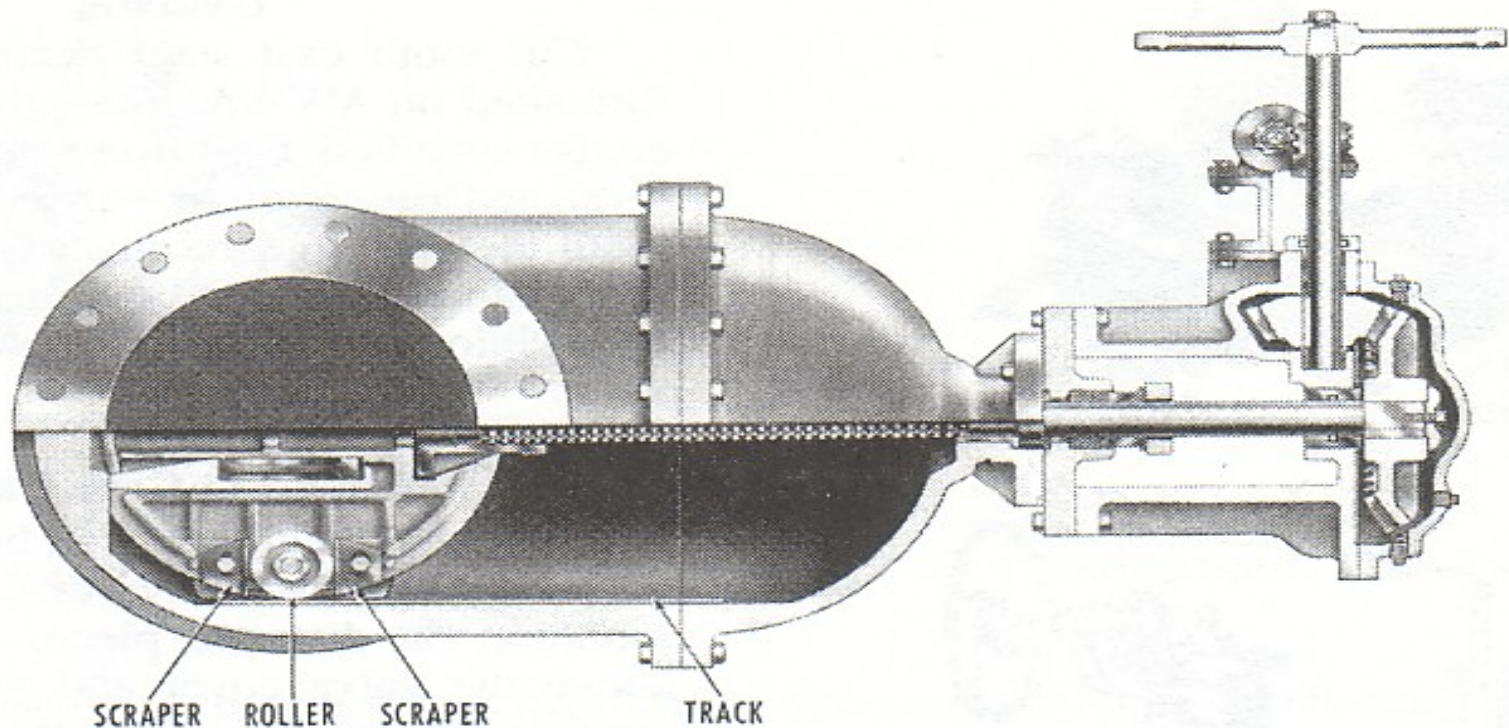
Bevel Gear

Metal Seated Gate Valve

- *Valves installed in a horizontal position should be equipped with rollers, tracks and scrapers.*

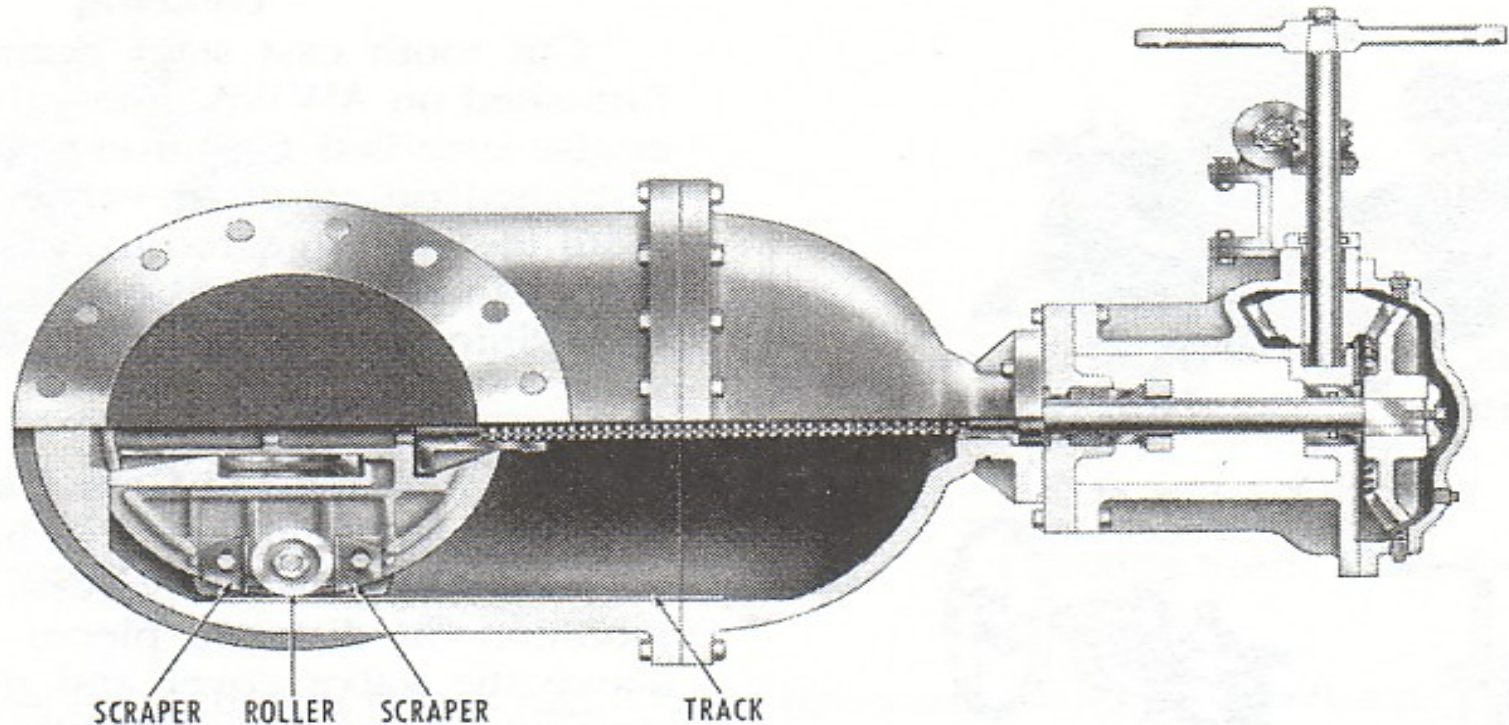
Metal Seated Gate Valve

- Rollers assist the travel of the gate assembly along tracks set into the valve body.



Metal Seated Gate Valve

- *Scrapers* are placed ahead of the rollers to clear the track of obstructions or foreign matter.



Resilient Wedge Gate Valves



Resilient Wedge Gate Valve



- *Available in sizes - 54 “*
- *Manufactured to AWWA C-509 and C550*
- *Bubble tight seal - zero leakage allowed*
- *Epoxy coated*

Resilient Wedge Gate Valve

- *Applications*
 - *Bubble Tight Shut Off*
 - *Throttling*
 - *Potable Water*
 - *Non-Potable Water*
 - *Sewage*
 - *Water Treatment*
 - *Wastewater Treatment*
 - *Forcmain Water*
 - *Forcemain Sewage*

Resilient Wedge Gate Valves

Available Operators



2" Nut



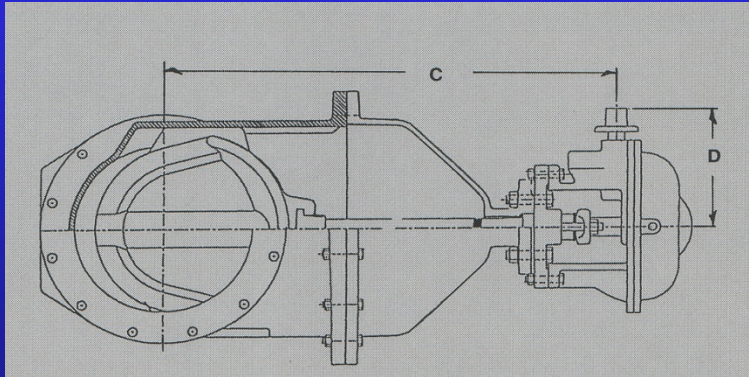
Hand wheel



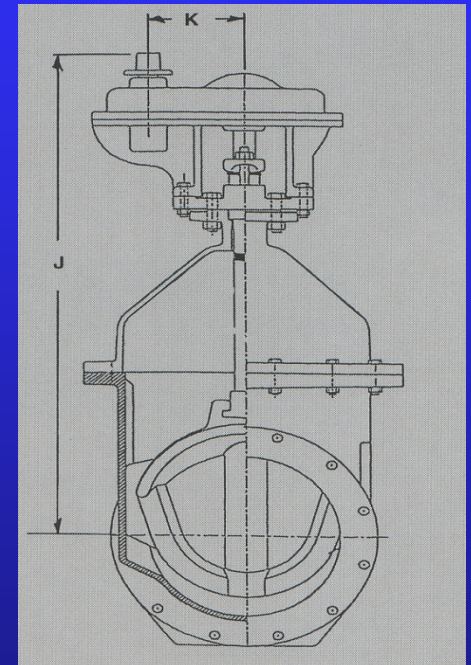
OS & Y

Resilient Wedge Gate Valve

Available Operators



*Bevel Gear
Horizontal Installation*



*Spur Gear
Vertical Installation*

Post Indicator Valves



Post Indicator
Valve



Indicator Post
Valve

Post Indicator Valves Bevel Gear

18" - 24"
Valves



Resilient Wedge Gate Valve



- Available End Connections
 - *Mechanical Joint*
 - *Flanged*
 - *Threaded*
 - *Tyton/Push On*
 - *Tapping*

Butterfly Valves



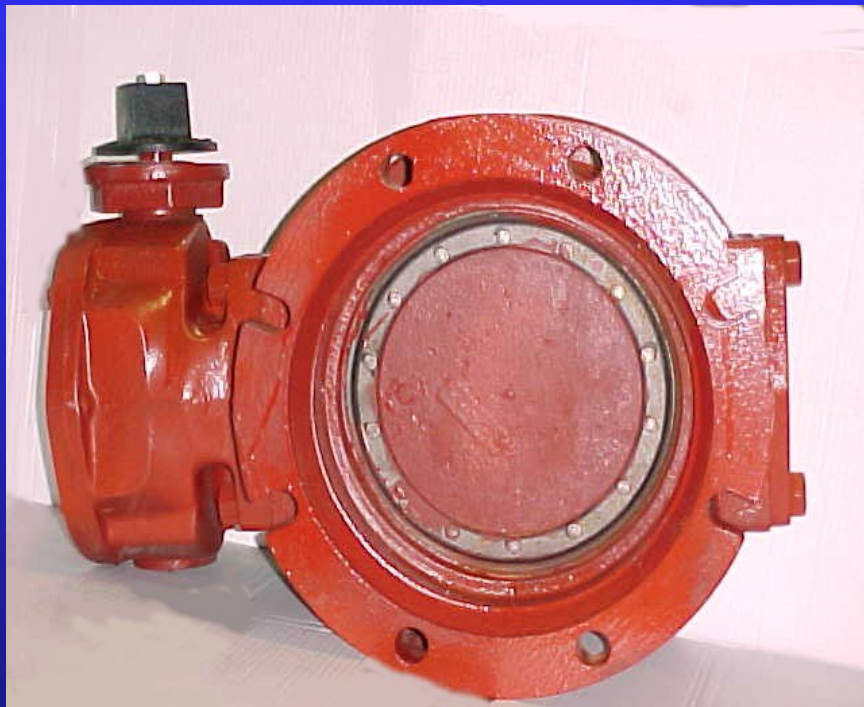
Butterfly Valves

- *Available in sizes to 144"*
- *Manufactured to AWWA Standard C504*

Butterfly Valves

- *Applications*
 - *Bubble Tight Shut Off*
 - *Throttling*
 - *Potable Water*
 - *Non-Potable Water*
 - *Water Treatment*
 - *Wastewater Treatment*
 - *Forcemain Water*
 - *Forcemain Sewage*

Butterfly Valves



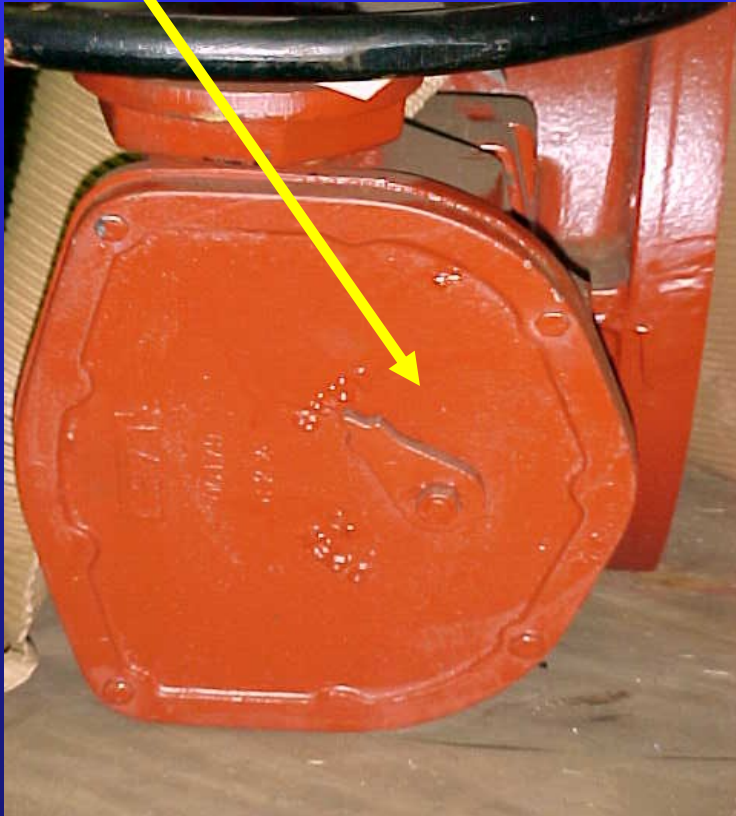
Mechanical Joint
2" Operating Nut



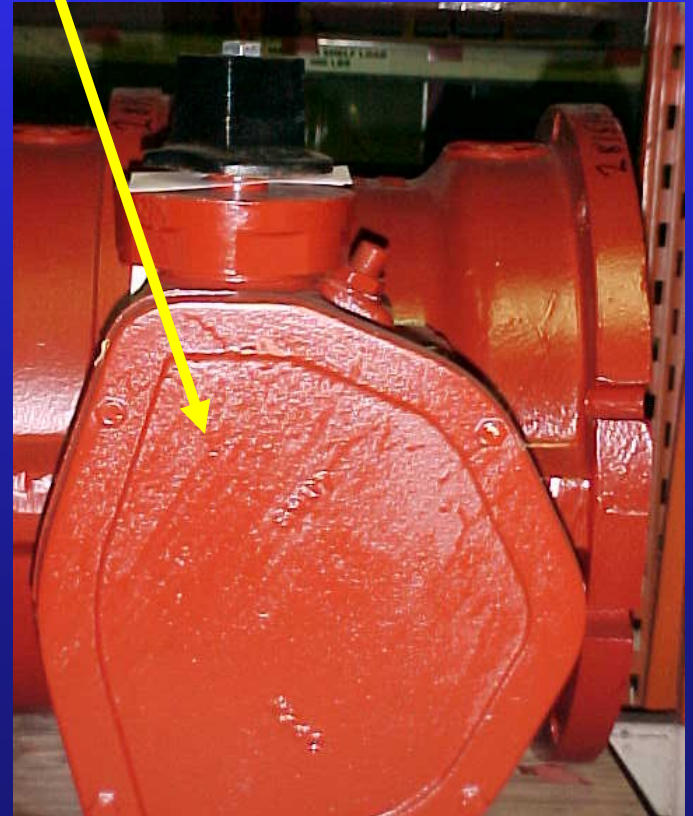
Flanged - Hand-Wheel

Butterfly Valves

Indicating



Non-Indicating



Butterfly Valves

- *Available End Connections*
 - *Flanged*
 - *Mechanical Joint*
 - *Wafer*

Coatings

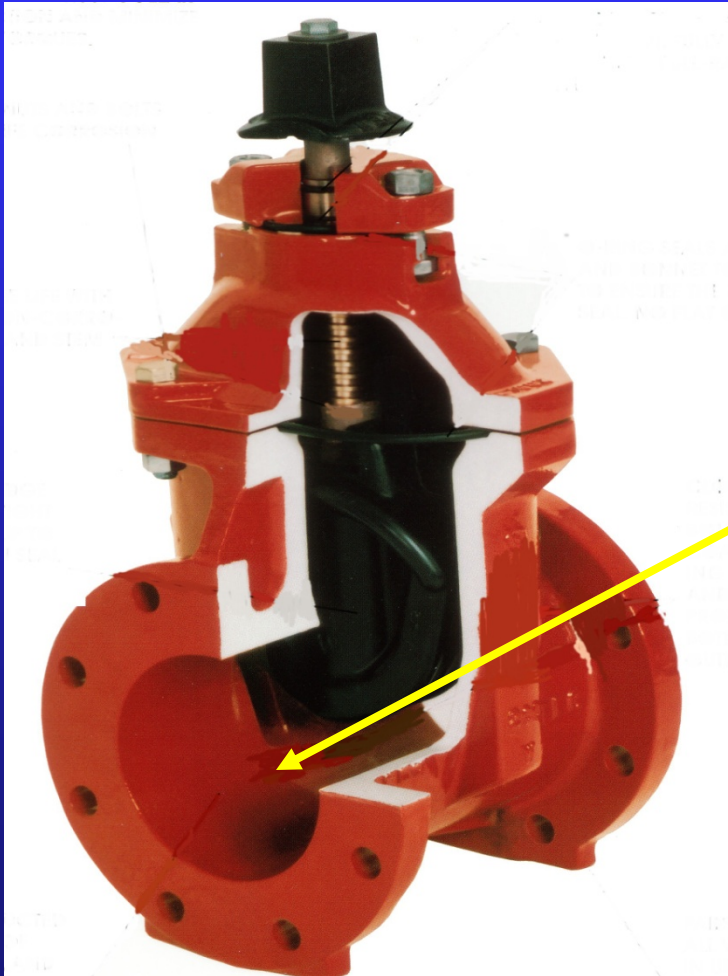
Specify Coatings

- *Primer Coating*
- *Tar Coating*
- *Epoxy Type Coating*

Gate Valve or Butterfly Valve?

- *Traditionally butterfly valves have been used in large diameter applications 14" +*
- *Old metal seated design gate valves did not perform as well as butterfly valves*
- *New Resilient Wedge design offers alternative to butterfly valves*

Smooth Unobstructed Waterway



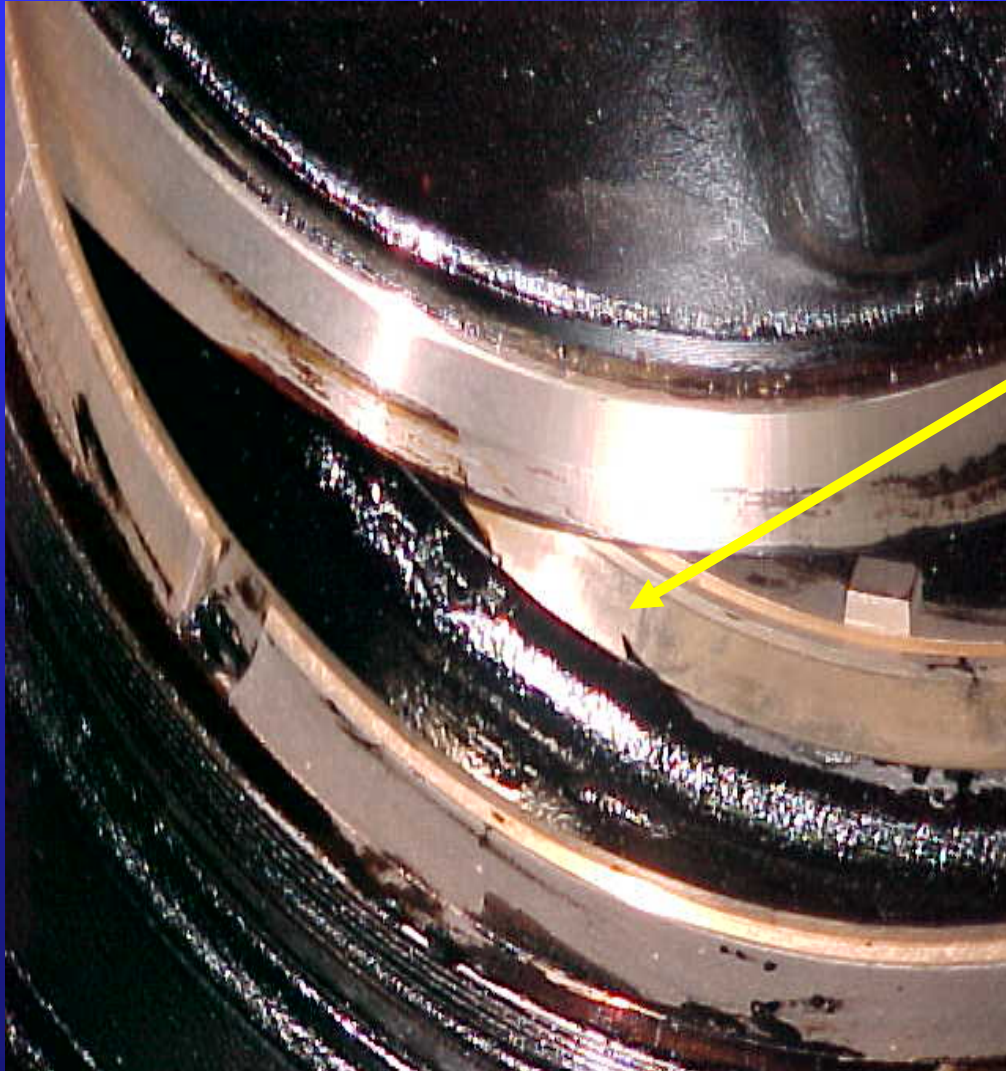
- *High flow characteristics*
- *100% smooth passage ensures non-turbulent flow*
- *No sediment build-up*
- *Will not impede line cleaning tools*

Resilient Wedge Gate Valve

Advantages vs Metal Seated Valve

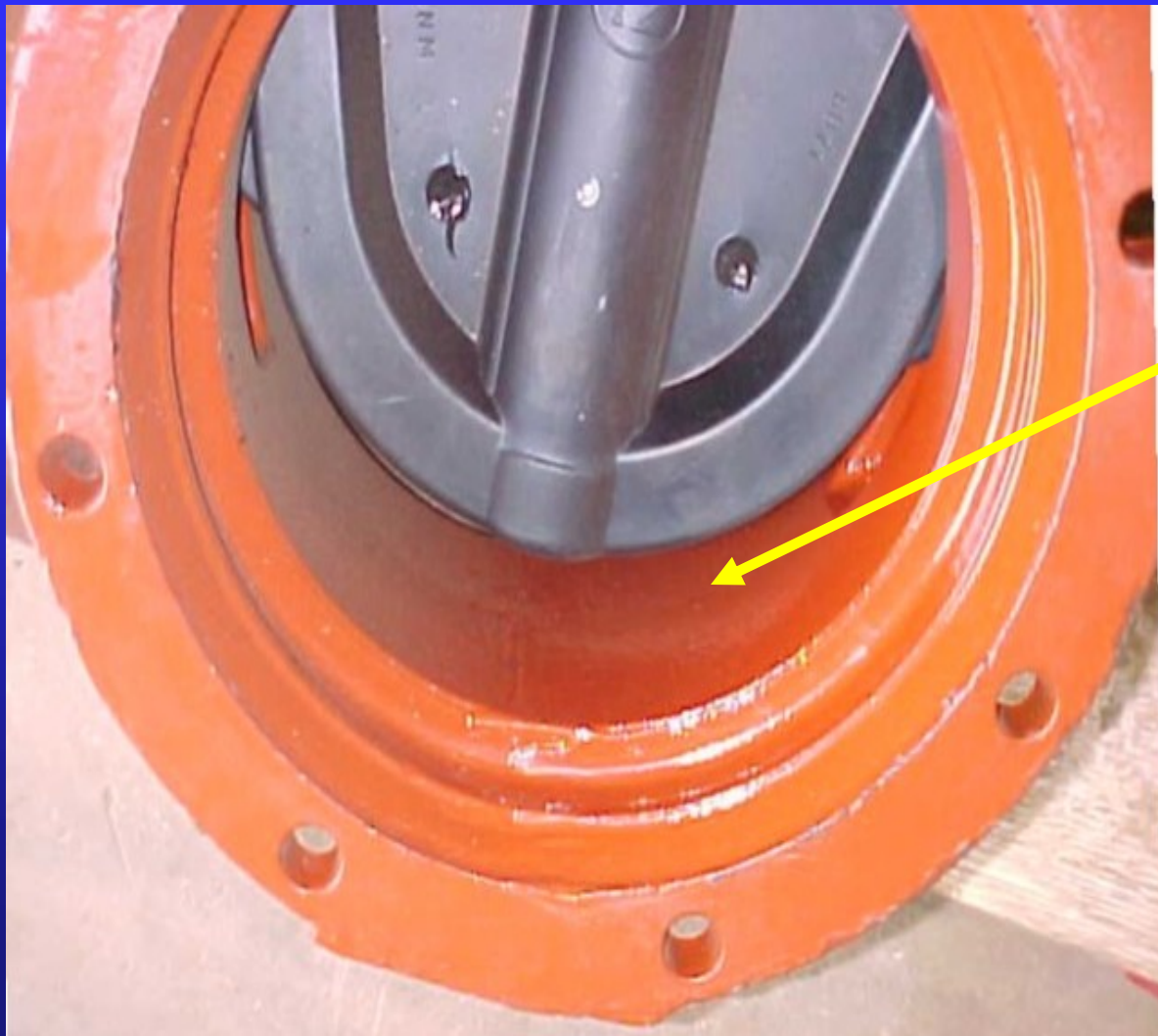
- *No Seat Rings*
 - *Nothing to be damaged by debris or corrosion*
 - *Obstruction free waterway*
 - *Valve will not become difficult to operate due to corrosion*

Metal Seat

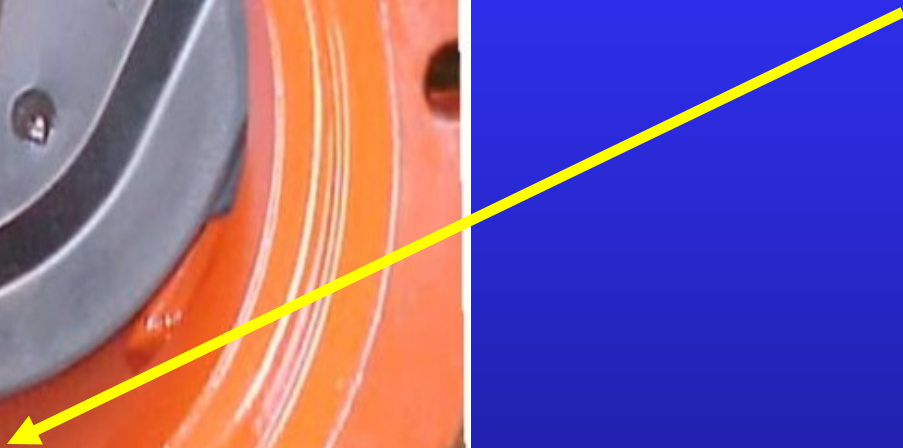


• Raised Seat Ring

Resilient Seat



- No Seat Ring



14" - 36" Resilient Wedge Gate Valve

Advantages vs Metal Seated Valve

- *Bypass valves not required - water pressure assists the wedge during travel*
- *Effective method of throttling without chattering*
- *Maintenance free*

14" - 36" Resilient Wedge Gate Valve

Advantages vs Butterfly Valves

- *High strength iron wedge fully encapsulated with rubber permanently bonded to metal*
 - *Design incorporates two seating surfaces*
 - *No seat wear - wedge is clear of waterway*

14" - 36" Resilient Wedge Gate Valve

Advantages vs Butterfly Valves

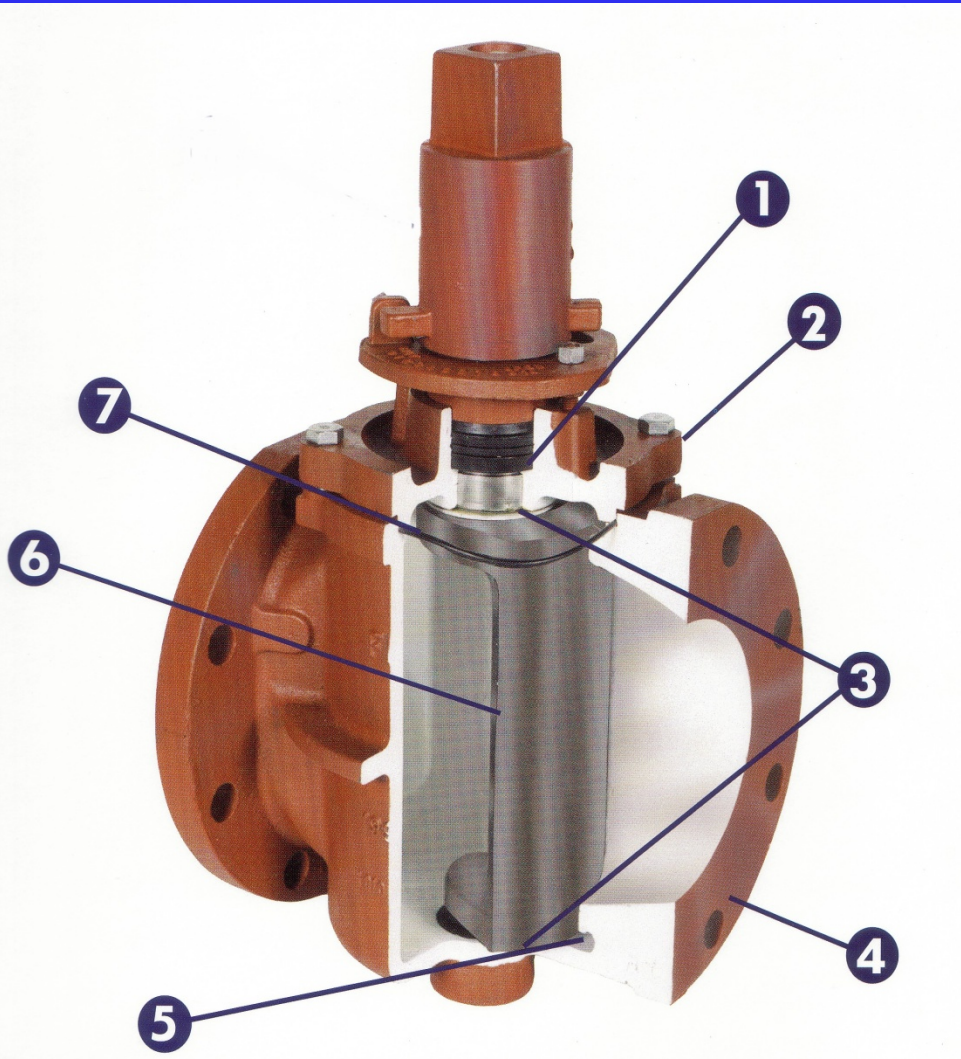
- *Full size unobstructed waterway allows for line cleaning without removing the valve*
- *High flow characteristics reduce pumping costs*
- *Valve chambers are not required*

Eccentric Plug Valve



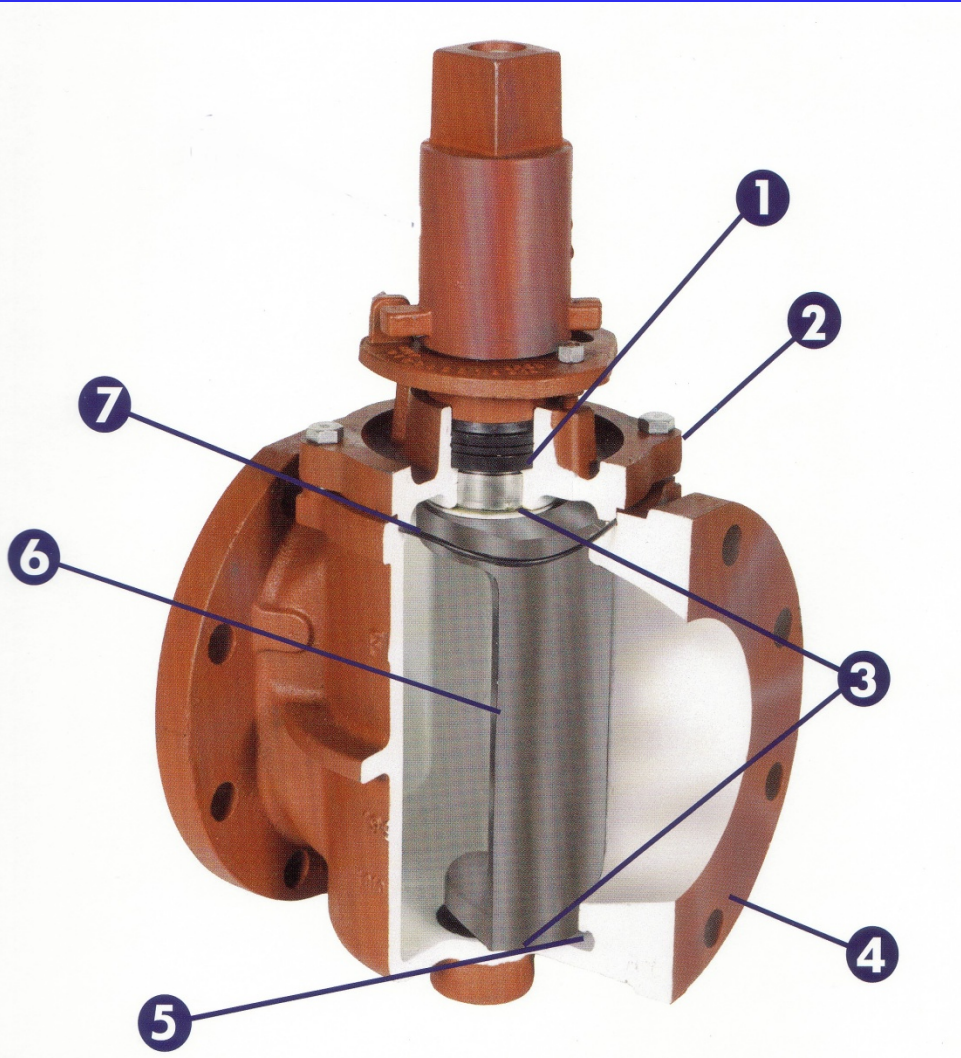
- *Used in sewerage applications where solids are present*
- *Available in sizes 2" - 24"*
- *Designed for 175 p.s.i. up to 12" and 150 p.s.i. 14" and larger*
- *1/4 turn to open and close. Gear Actuators recommended on 6" and larger*

Plug Valve Features



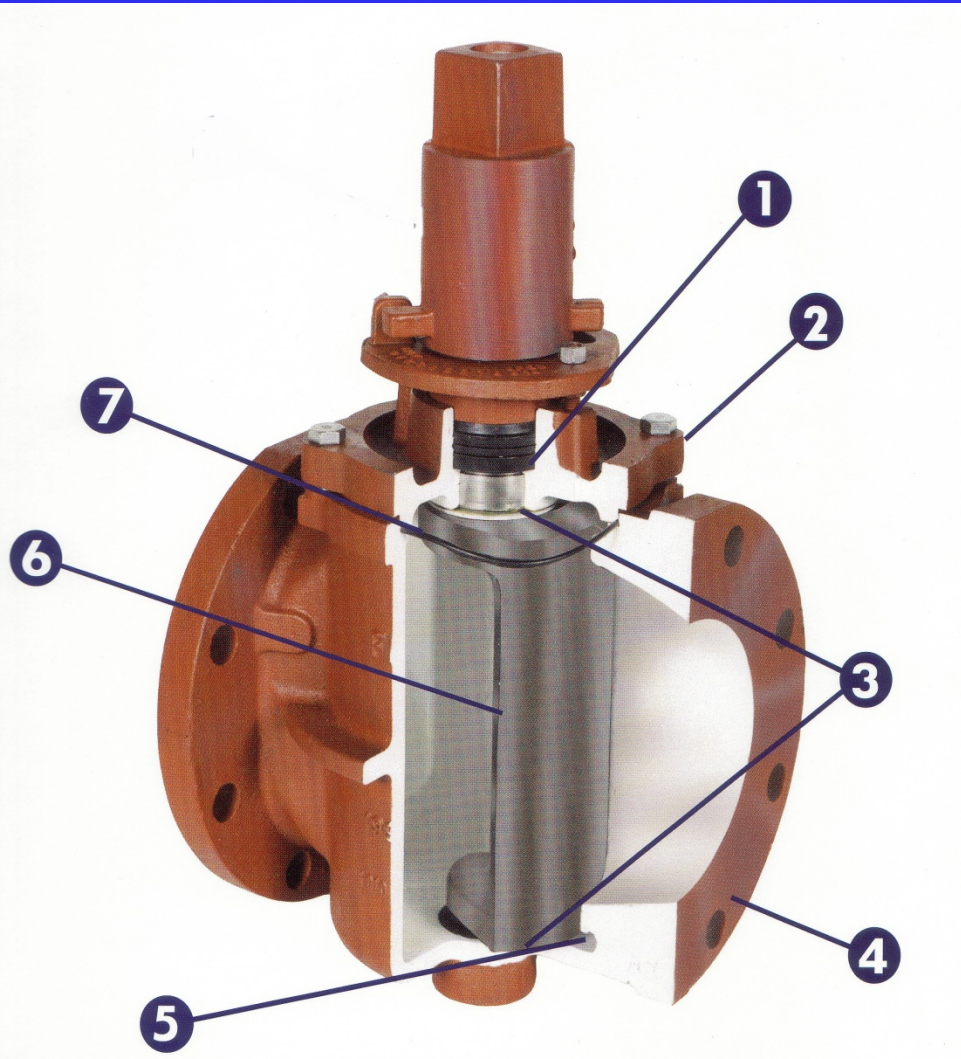
- *Valve bonnets are fully sealed and bolted to the valve for easy removal of the plug should maintenance be required*

Plug Valve Features



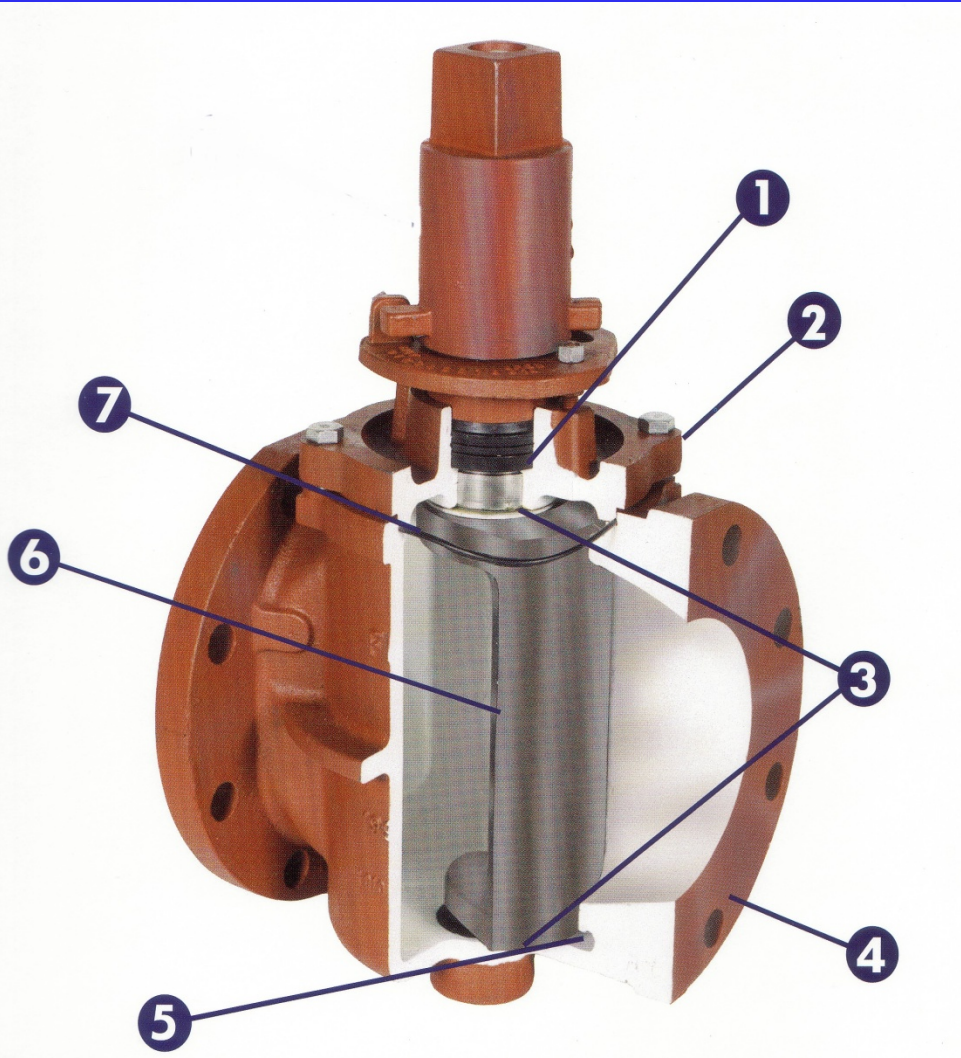
- Available end connections -
flanged, mechanical joint and grooved

Plug Valve Features



- *Welded nickel seat to ensure no possibility of damage to the plug face*

Plug Valve Features



-The valve plug is cast iron entirely coated with Buna-N rubber to ensure corrosion resistance

Valve Accessories

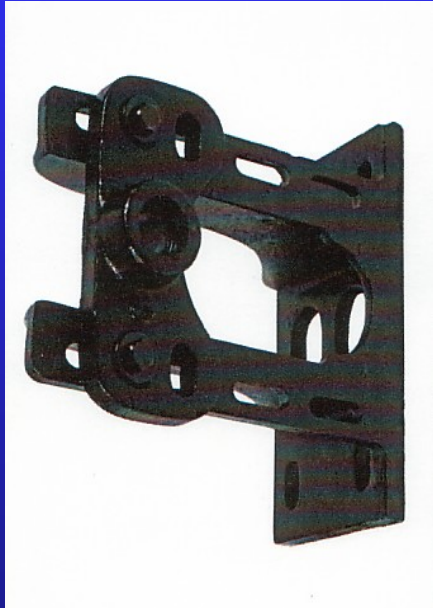


Floor Stand

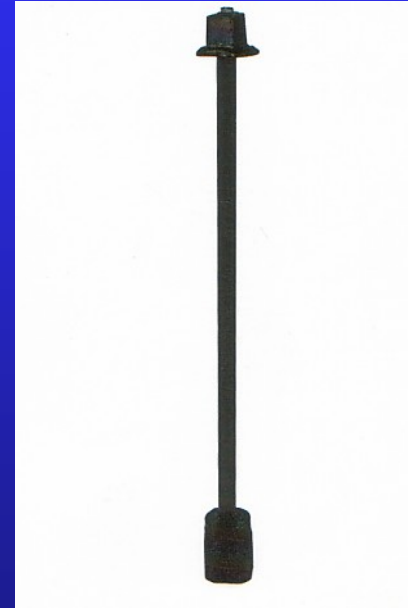


Chain Wheel

Valve Accessories

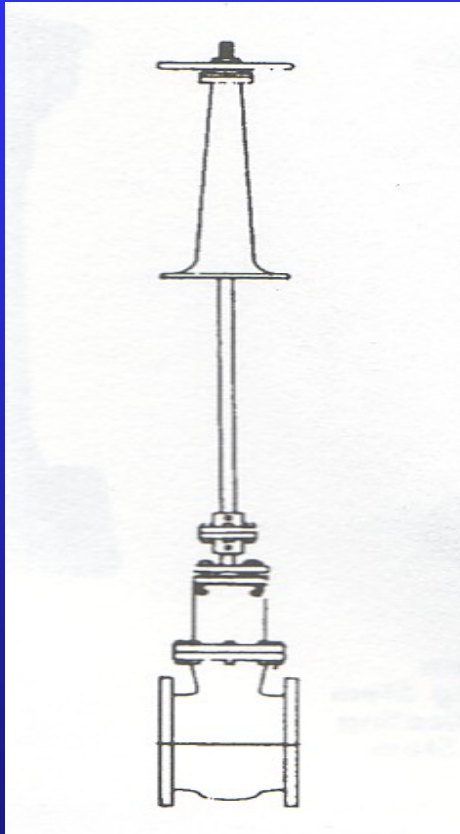


Stem Guide

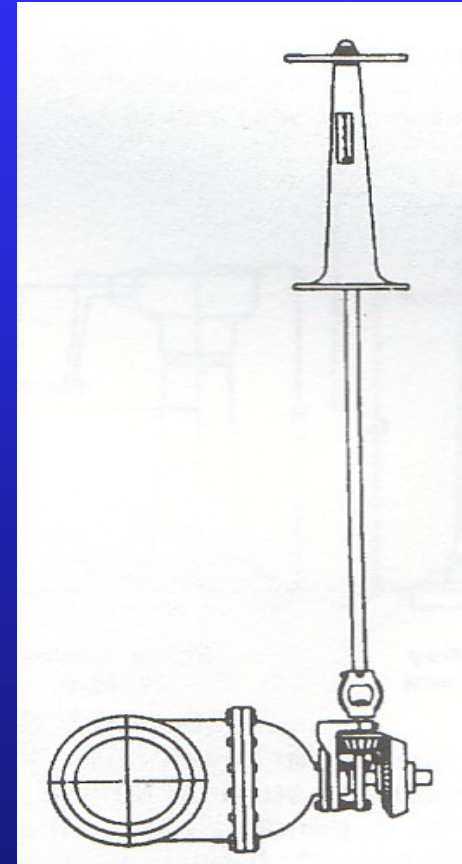


Stem Extension

Floor Stands



Standard Valve



Spur Gear