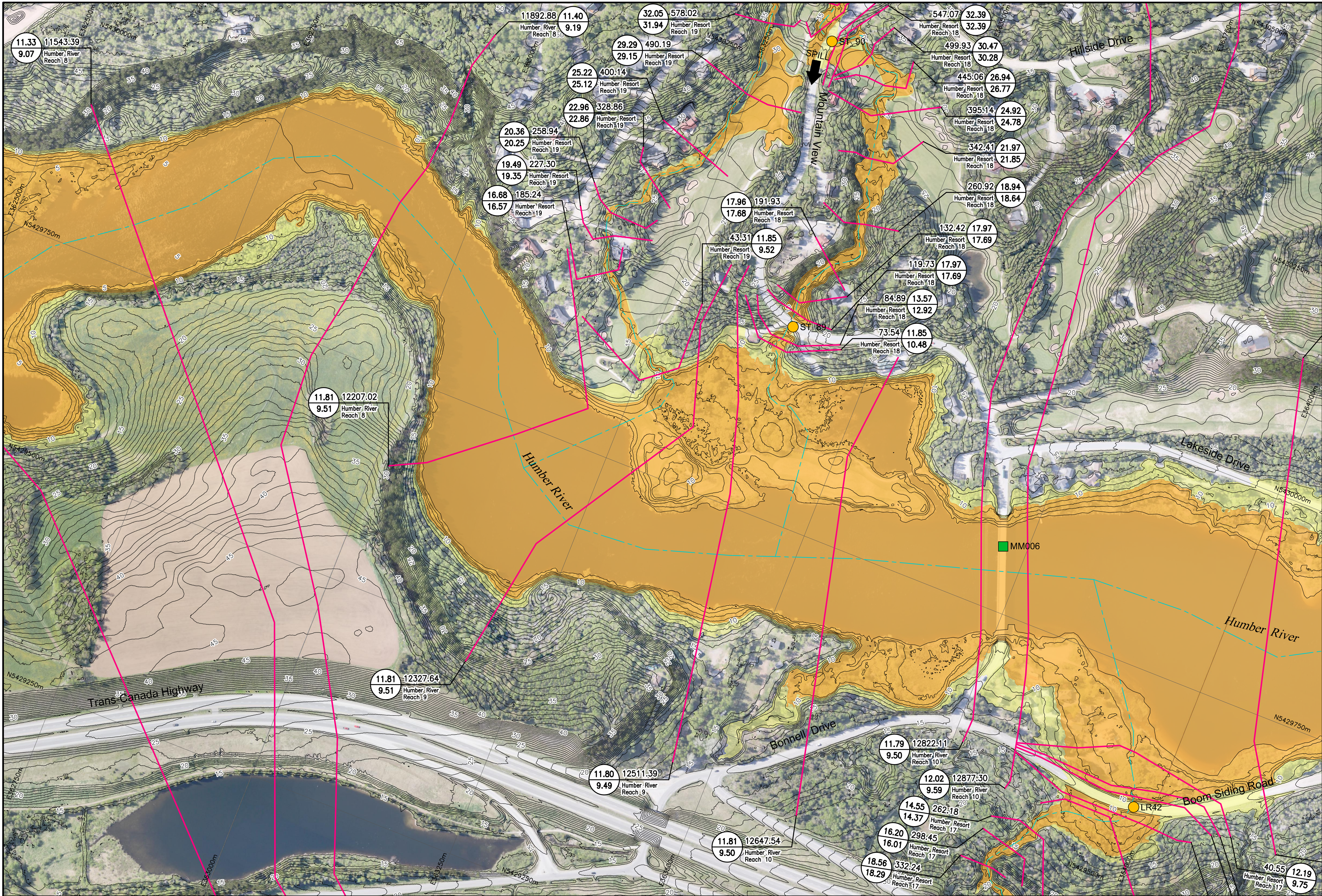


I:\TPB188156 - Humber\06_DES-ENG\01_CAD\02_DWG\05_WR\01_PROJ\FloodMap\Future\Future_VTM-CLCDD\FB188156-FZM-CLCDD-042.dwg

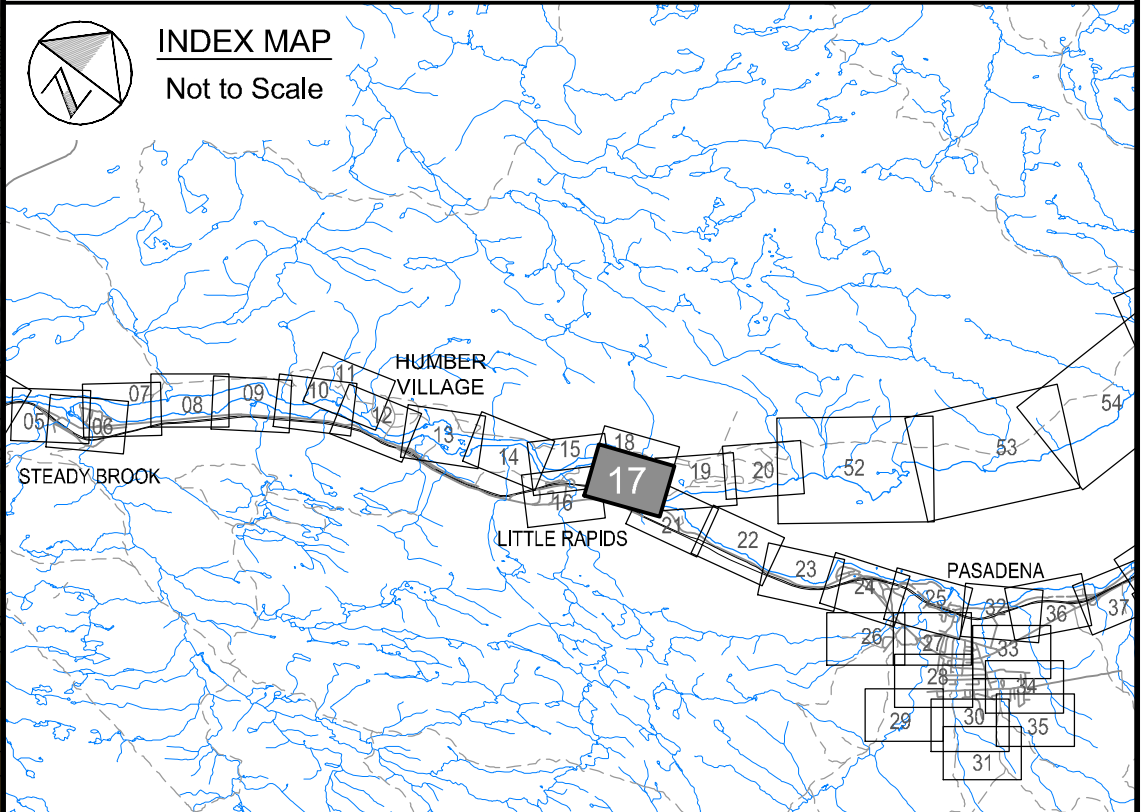


Newfoundland Labrador
 Department of Environment,
 Climate Change, and Municipalities

**Climate Change
 Flood Risk Map Study
 Humber River Communities**

Flood Extent Map
 Climate Change and
 Current Development Condition

**Humber River
 Humber Resort Watercourses**



Cross Section Label

1:100 AEP Flood Water Level (elevation in metres)
 1:20 AEP Flood Water Level (elevation in metres)

Cross Section Number
 River Central Line
 River/Reach Identification
 Cross Section Location

Hydraulic Crossings

Bridge Location Identification
 Culvert Location Identification

1:20 AEP Flood Zone
 1:100 AEP Flood Zone

wood.

Please note that the Professional Engineer's stamp verifies the flood line and associated data, not the map unless otherwise noted.

R E V I S I O N S			
No.	Description	BY	DATE

Sheet 17 of 90

MTMNAD83
 ZONE 3

SCALE VALID FOR FULL
 SIZE 22"x34" PLOT ONLY

Scale 1:2500

Metres 150 0 150
 Feet 300 0 300 600 900

AERIAL PHOTOGRAPHY BY MOSAIC3D, JUNE 9th-14th 2019
 CONTOUR INTERVAL: 1.0 METRE (DATUM CGVD-2013)

North Arrow