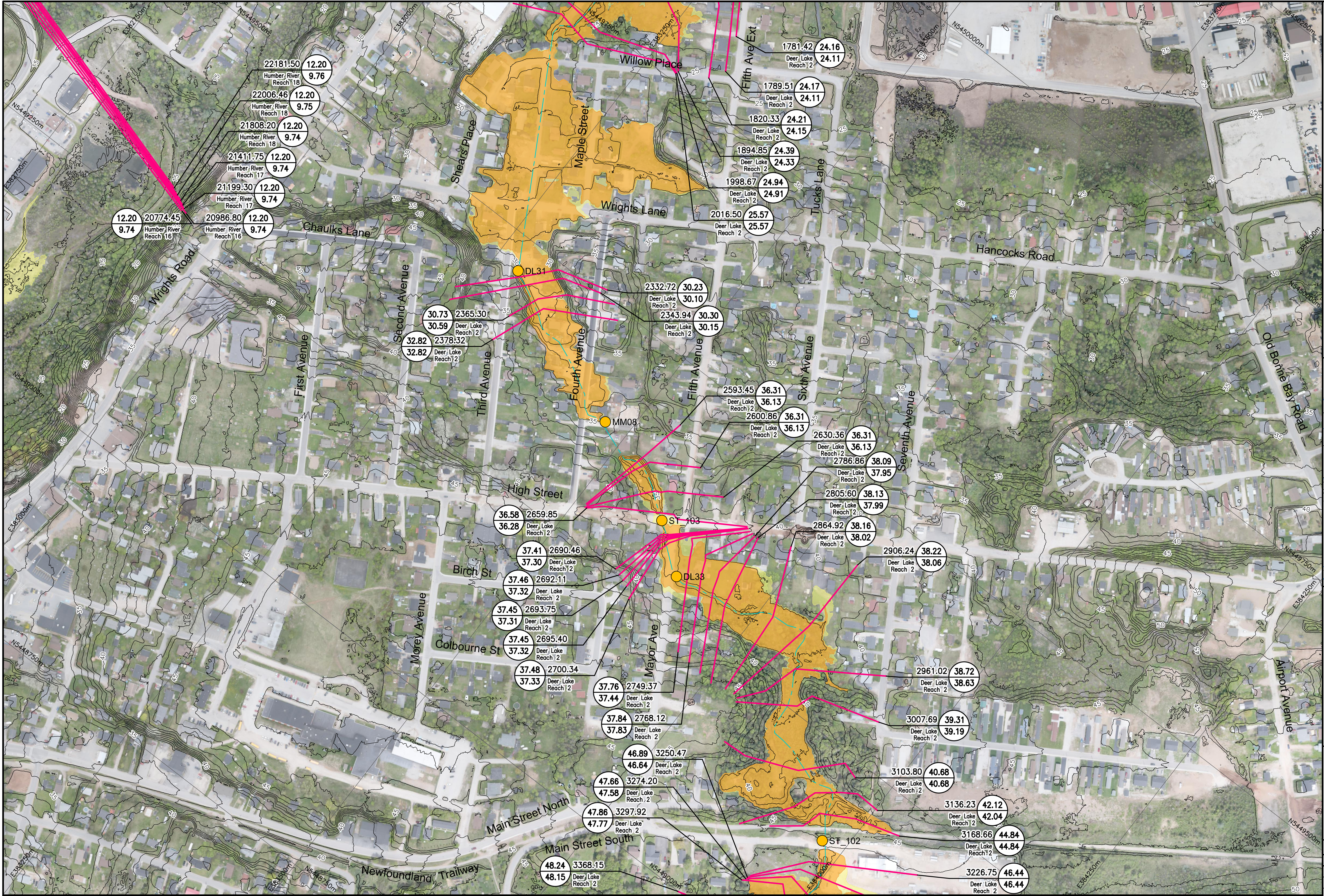


I:\TPB188156 - Humber\06\_DES-ENG\01\_CAD\02\_DWG\05\_WFN\01\_PROJ\FloodMap\Future\FZM-CLCD\FB188156-FZM-CLCD-047.dwg





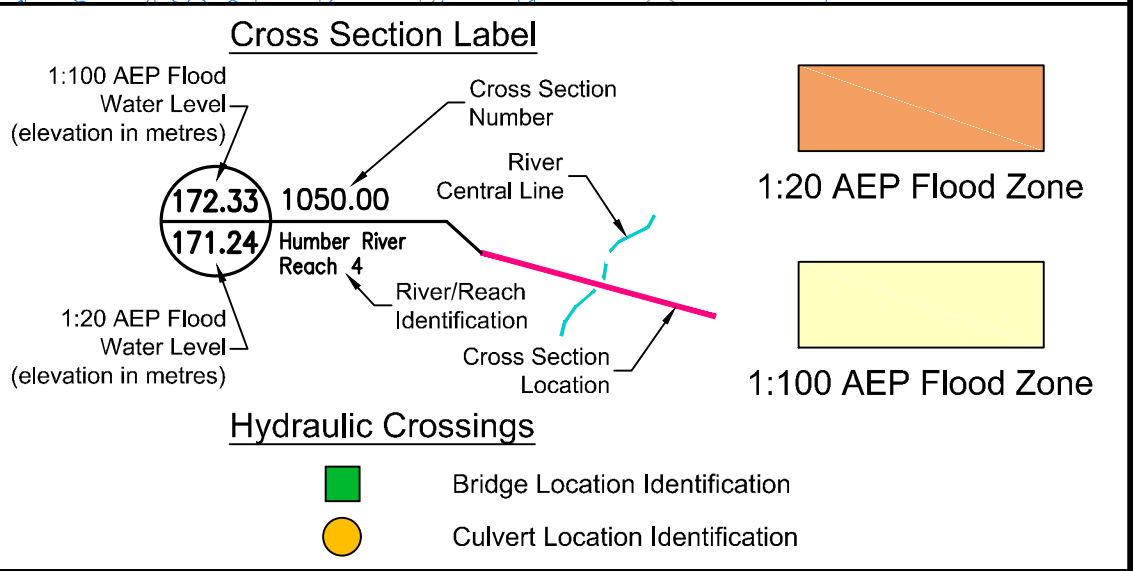
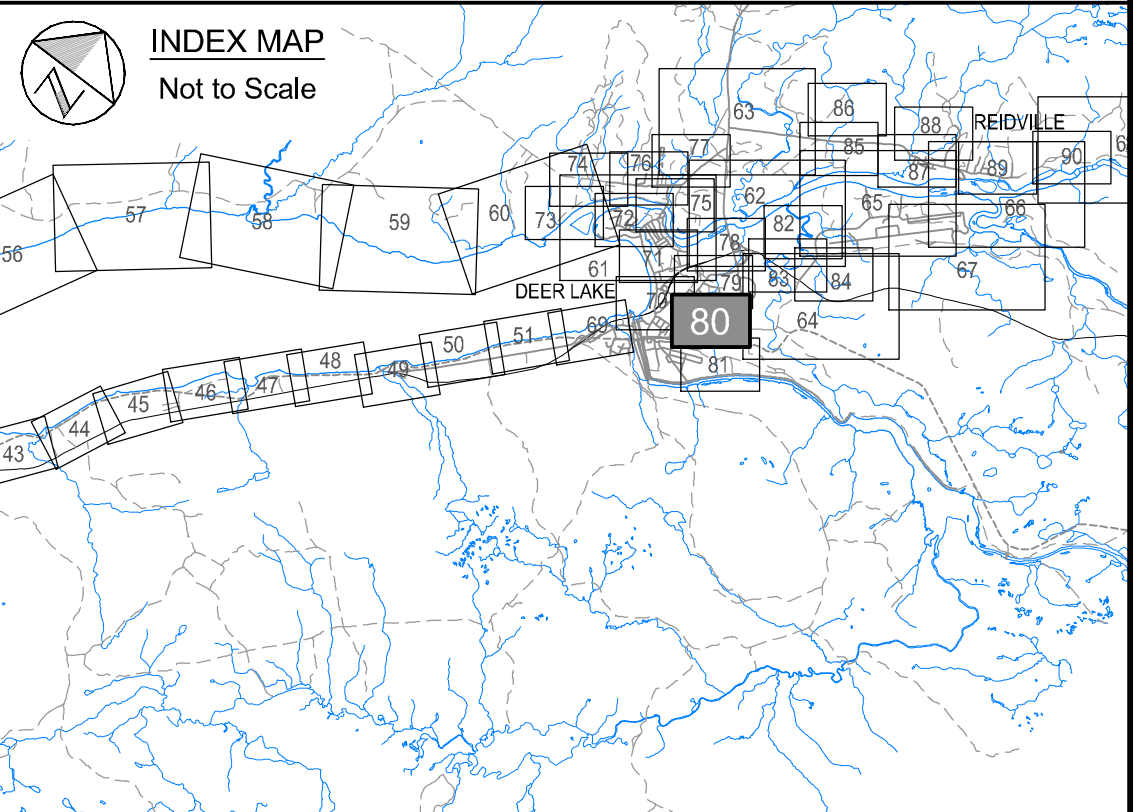
**Newfoundland  
Labrador**  
Department of Environment,  
Climate Change, and Municipalities


## Climate Change Flood Risk Map Study Humber River Communities

Flood Extent Map

Climate Change and  
Current Development Condition

Deer Lake Watercourses





Please note that the Professional Engineer's stamp verifies the flood line and associated data, not the map unless otherwise noted.

REVISIONS			
No.	Description	BY	DATE

Sheet 80 of 90