

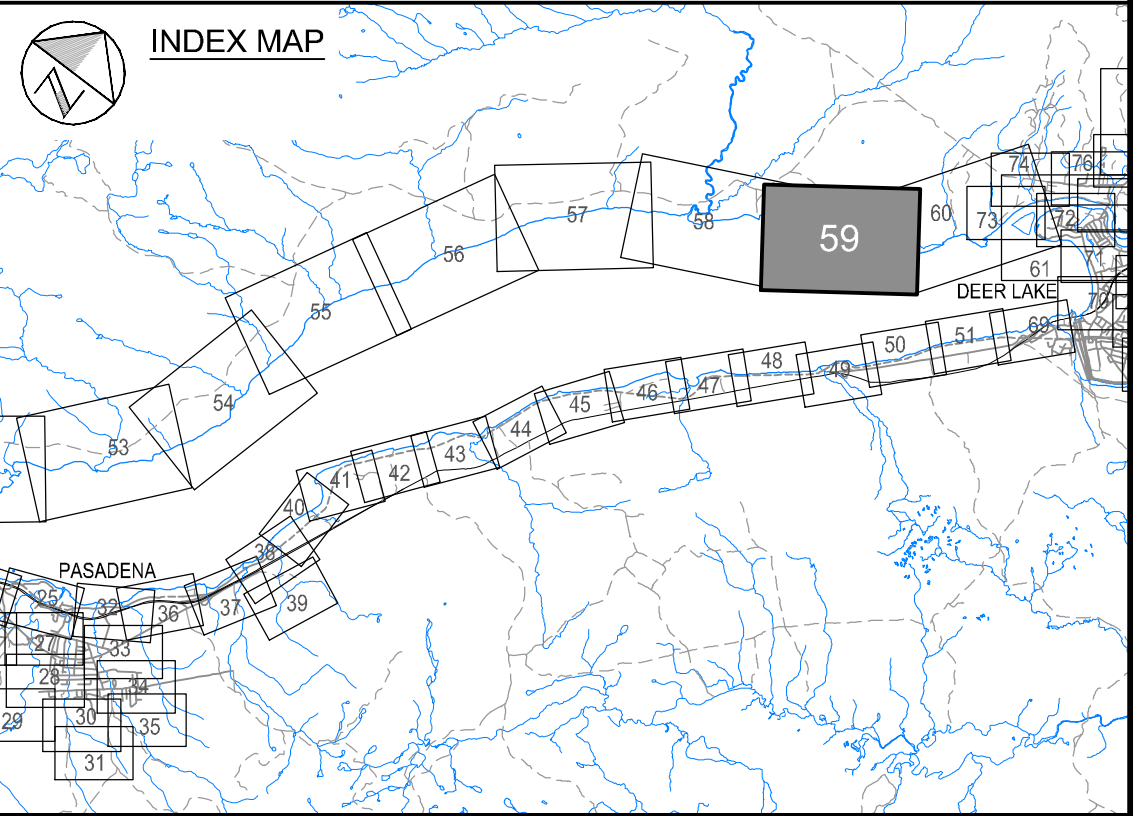
I:\TPB188156 - Humber\06\_DES-ENG\01\_CAD\02\_DWG\05\_WR\01\_PROJ\FloodMaps\Future\ZM-CLCD\TPB188156-FZM-CLCD-04.dwg

  
**Newfoundland  
Labrador**  
Department of Environment,  
Climate Change, and Municipalities

**Climate Change  
Flood Risk Map Study  
Humber River Communities**

**Flood Extent Map**  
Climate Change and  
Fully Developed Condition

**Deer Lake**



**Cross Section Label**

1:100 AEP Flood Water Level (elevation in metres) 172.33  
1:20 AEP Flood Water Level (elevation in metres) 171.24


1050.00  
Humber River Reach 4

Cross Section Number  
River Central Line  
River/Reach Identification  
Cross Section Location

**Hydraulic Crossings**

Bridge Location Identification  
Culvert Location Identification

1:20 AEP Flood Zone  
1:100 AEP Flood Zone



Please note that the Professional Engineer's stamp verifies the flood line and associated data, not the map unless otherwise noted.

R E V I S I O N S			
No.	Description	BY	DATE

**Sheet 59 of 90**

**MTMNAD83  
ZONE 3**

SCALE VALID FOR FULL  
SIZE 22"X34" PLOT ONLY

Scale 1:5000

Metres 300 0 300  
Feet 600 0 600 1200 1800

AERIAL PHOTOGRAPHY BY MOSAIC3D, JUNE 2019  
CONTOUR INTERVAL: 5.0 METRES (DATUM CGVD-2013)