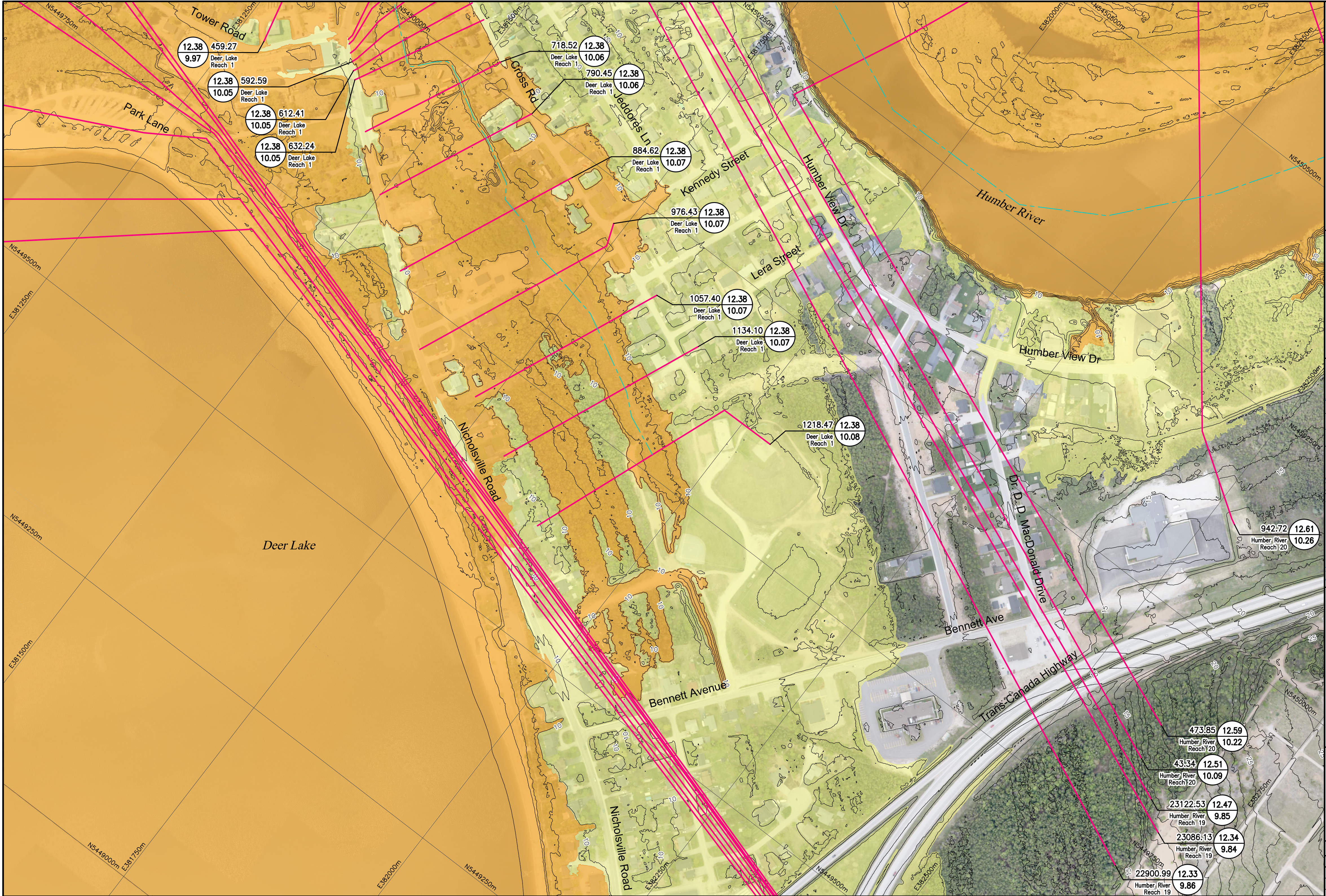


I:\TPB188156 - Humber\06_DES-ENG\01_CAD\02_DWG\05_WR\01_PROJ\FloodMaps\Future\ZM-CLCFD\TPB188156-F7M-CLCFD-0M7.dwg





Newfoundland Labrador

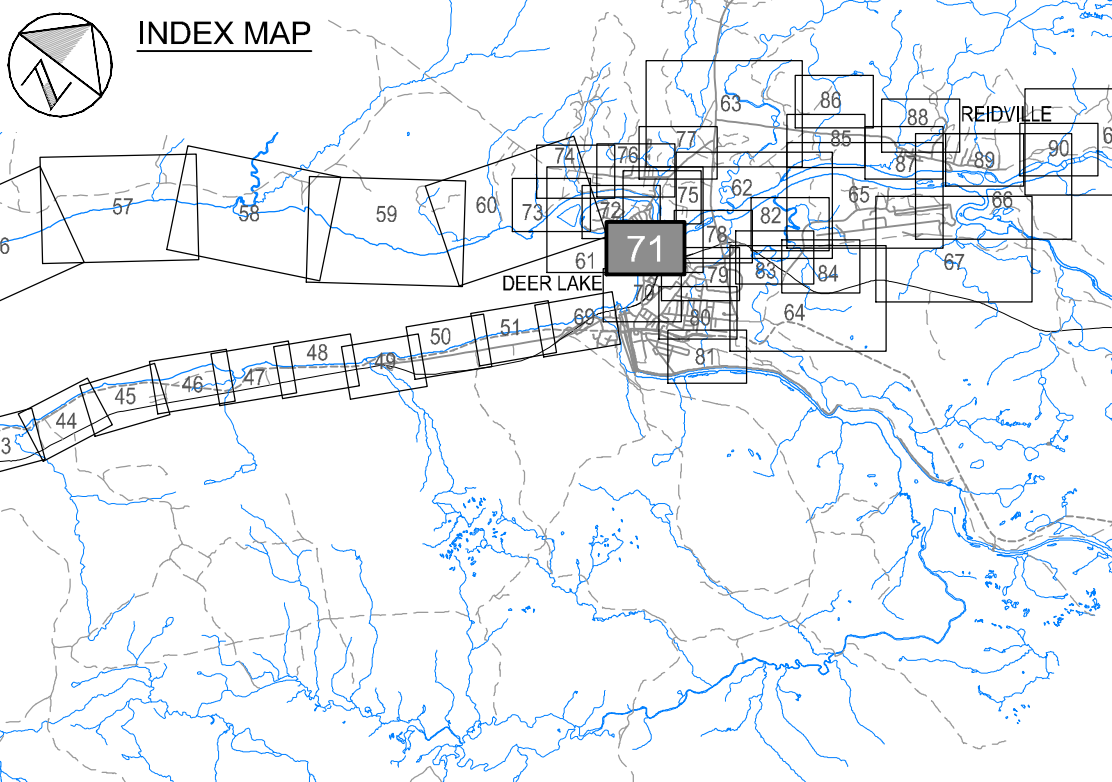
Department of Environment,
Climate Change, and Municipalities

Climate Change Flood Risk Map Study Humber River Communities

Flood Extent Map

Climate Change and
Fully Developed Condition

Humber River
Deer Lake



Cross Section Label

1:100 AEP Flood
Water Level
(elevation in metres)

1:20 AEP Flood
Water Level
(elevation in metres)

Cross Section
Number

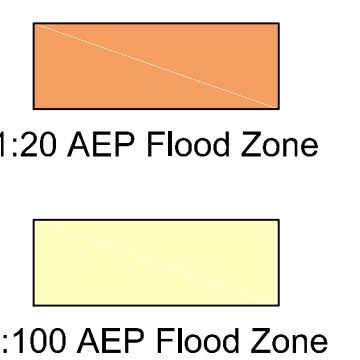
River
Central Line

River/Reach
Identification

Cross Section
Location

Hydraulic Crossings

- Bridge Location Identification
- Culvert Location Identification





Please note that the Professional
Engineer's stamp verifies the flood
line and associated data, not the
map unless otherwise noted.

R E V I S I O N S			
No.	Description	BY	DATE