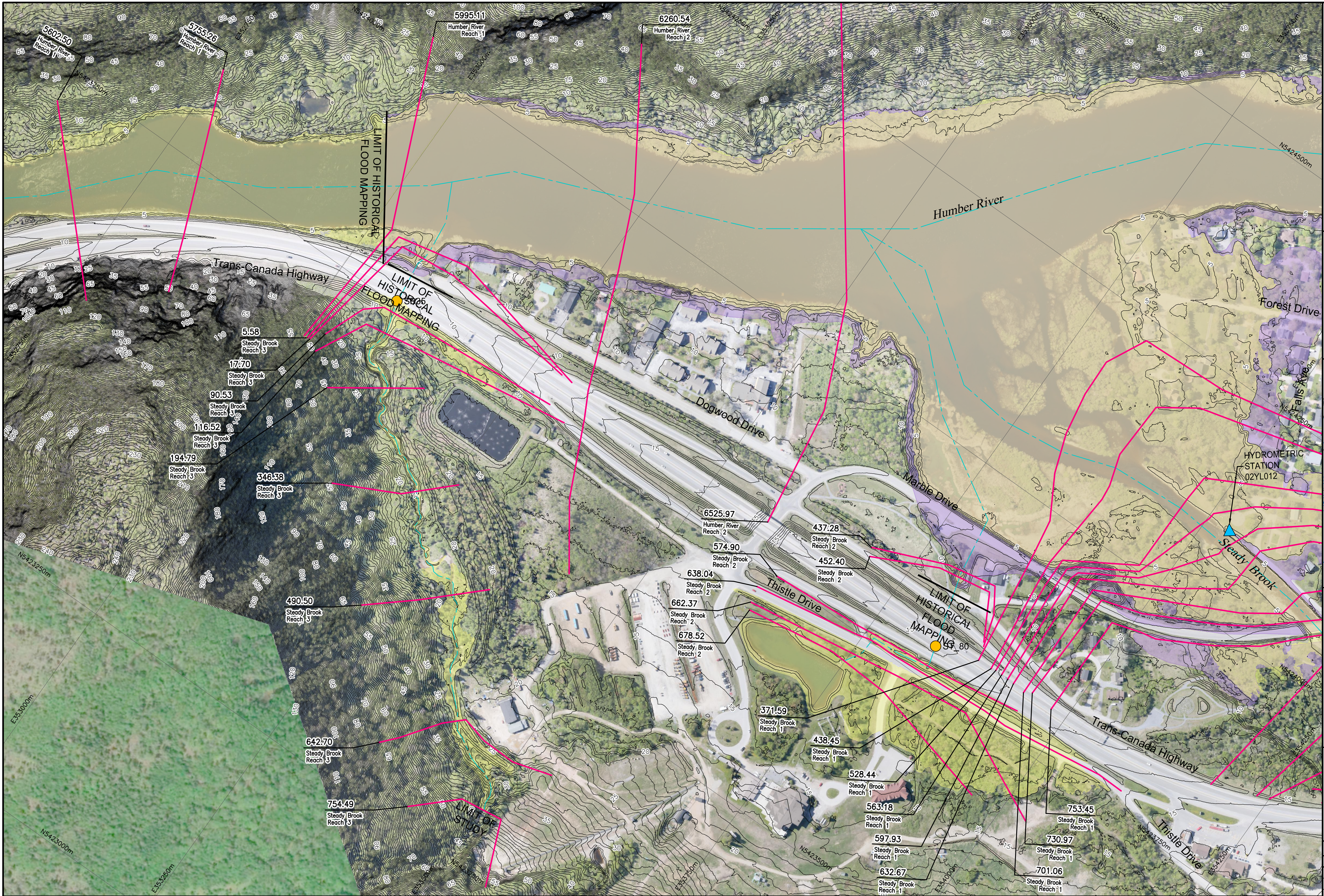



I:\TPB188156 - Humber\06_DES-ENG\01_CAD\02_DWG\05_WR\01_PROJ\FloodMaps\Comparison\FZM-CCCD_HIST\TPB188156-FZM-CCCD_HIST-100AEP-CM1.dwg



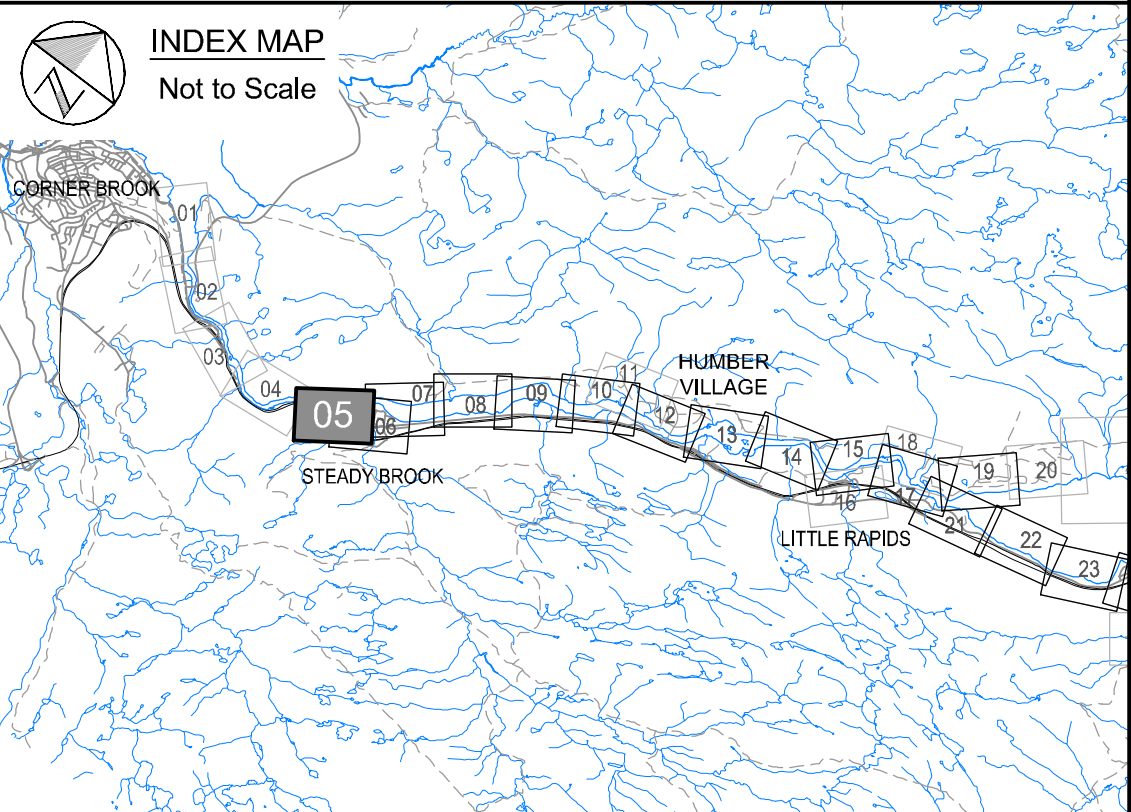


Newfoundland Labrador

Department of Environment,
Climate Change, and Municipalities

Climate Change Flood Risk Map Study Humber River Communities

1:100 AEP Flood Extent Comparison Map
Current Climate and Current Development
to Historical Condition
Humber River
Steady Brook Watercourses



Cross Section Label

1050.00
Humber River
Reach 4

River/Reach
Identification

Hydraulic Crossings

- Bridge Location Identification
- Culvert Location Identification

**Current Climate and
Current Development**

1:100 AEP Flood Zone

**Historical
Condition**

1:100 AEP Flood Zone



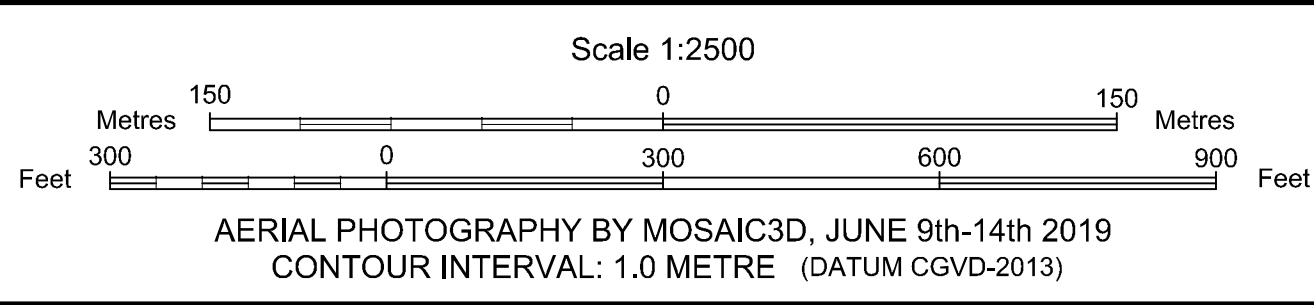
Please note that the Professional Engineer's stamp verifies the flood line and associated data, not the map unless otherwise noted.

R E V I S I O N S			
No.	Description	BY	DATE

Sheet 05 of 90

MTMNAD83
ZONE 3

SCALE VALID FOR FULL
SIZE 22"x34" PLOT ONLY



NOTE:
HISTORICAL 1:20 AEP AND 1:100 AEP FLOODLINES
HAVE BEEN DIGITIZED FROM RASTER 1:10000
FLOOD INFORMATION MAPS OF DEER LAKE AND
STEADY BROOK THAT HAVE BEEN GEO-REFERENCED
USING BEST FIT/RUBBERSHEETING PRACTICES.

