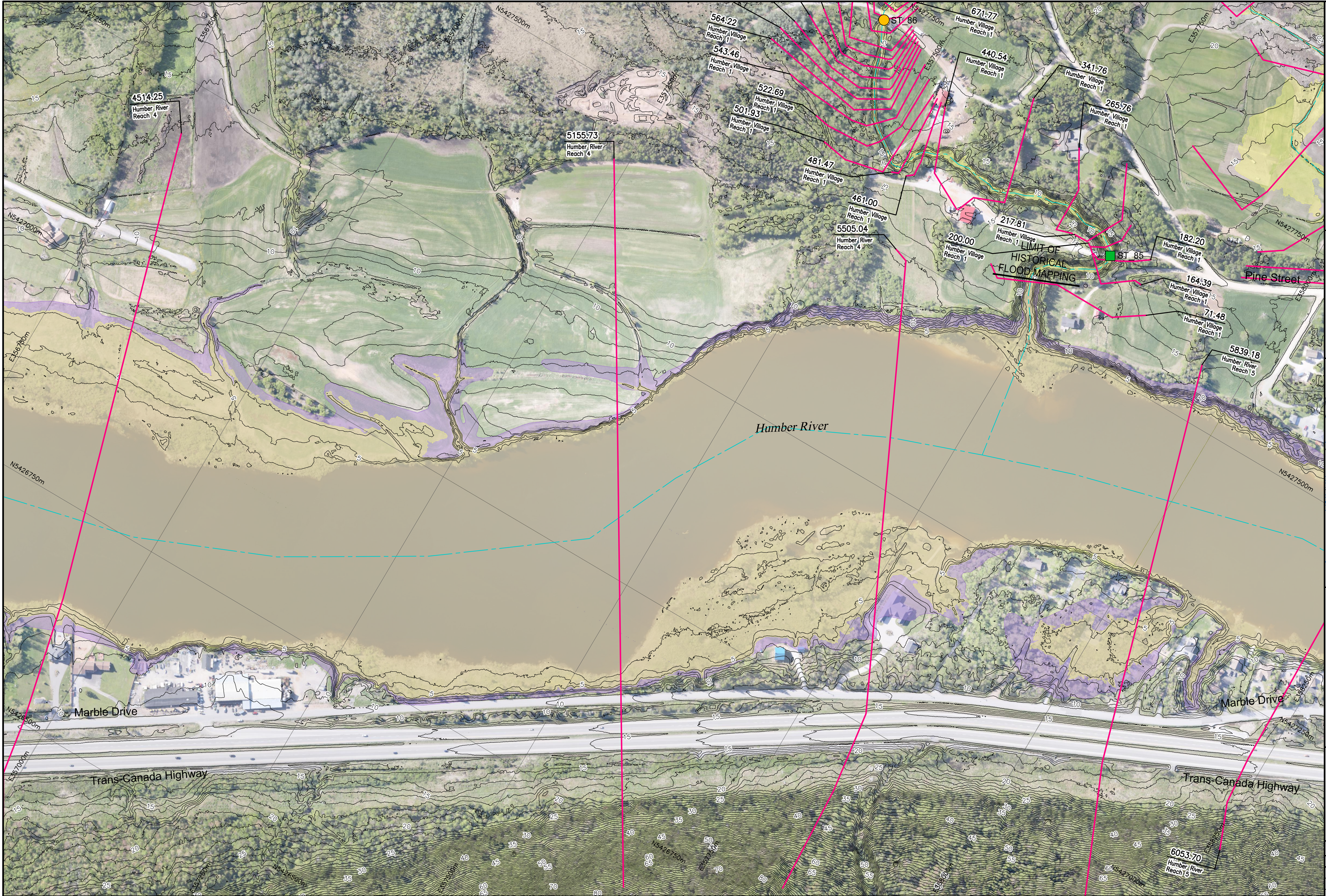


I:\TPB188156 - Humber\06_DES-ENG\01_CAD\02_DWG\05_WR\01_PROJ\FloodMaps\Comparison\FZM-CCCD_HIST\TPB188156-FZM-CCCD_HIST-100AEP-CM1.dwg



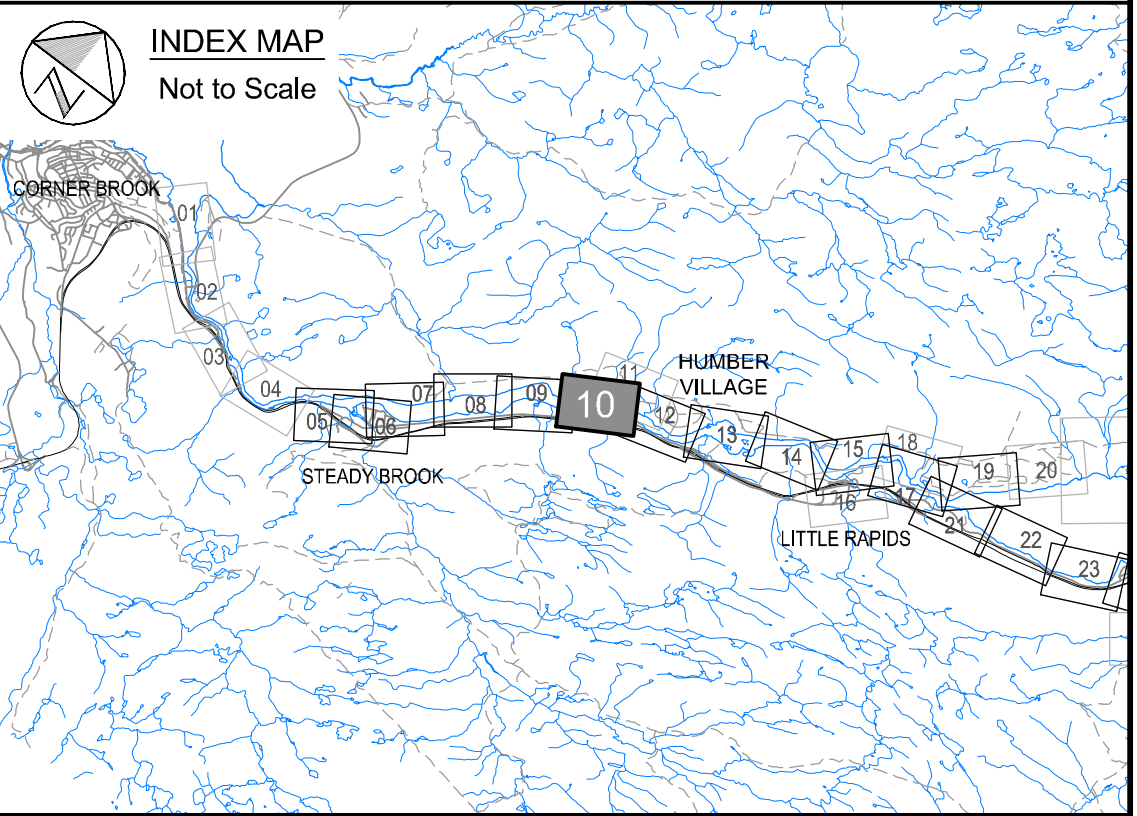


Newfoundland Labrador

Department of Environment,
Climate Change, and Municipalities

Climate Change Flood Risk Map Study Humber River Communities

1:100 AEP Flood Extent Comparison Map
Current Climate and Current Development
to Historical Condition
Humber River
Humber Village Watercourses



Cross Section Label

Cross Section Number

1050.00

Humber River Reach 4

River/Reach Identification

River Central Line

Cross Section Location

Current Climate and Current Development

1:100 AEP Flood Zone

Historical Condition

1:100 AEP Flood Zone

Hydraulic Crossings

Bridge Location Identification

Culvert Location Identification



Please note that the Professional Engineer's stamp verifies the flood line and associated data, not the map unless otherwise noted.

R E V I S I O N S			
No.	Description	BY	DATE

Sheet 10 of 90

MTMNAD83
ZONE 3

SCALE VALID FOR FULL
SIZE 22"x34" PLOT ONLY

Scale 1:2500

Metres 150 0 150

Feet 300 0 300 600 900

AERIAL PHOTOGRAPHY BY MOSAIC3D, JUNE 9th-14th 2019
CONTOUR INTERVAL: 1.0 METRE (DATUM CGVD-2013)

NOTE:
HISTORICAL 1:20 AEP AND 1:100 AEP FLOODLINES
HAVE BEEN DIGITIZED FROM RASTER 1:10000
FLOOD INFORMATION MAPS OF DEER LAKE AND
STEADY BROOK THAT HAVE BEEN GEO-REFERENCED
USING BEST FIT/RUBBERSHEETING PRACTICES.

