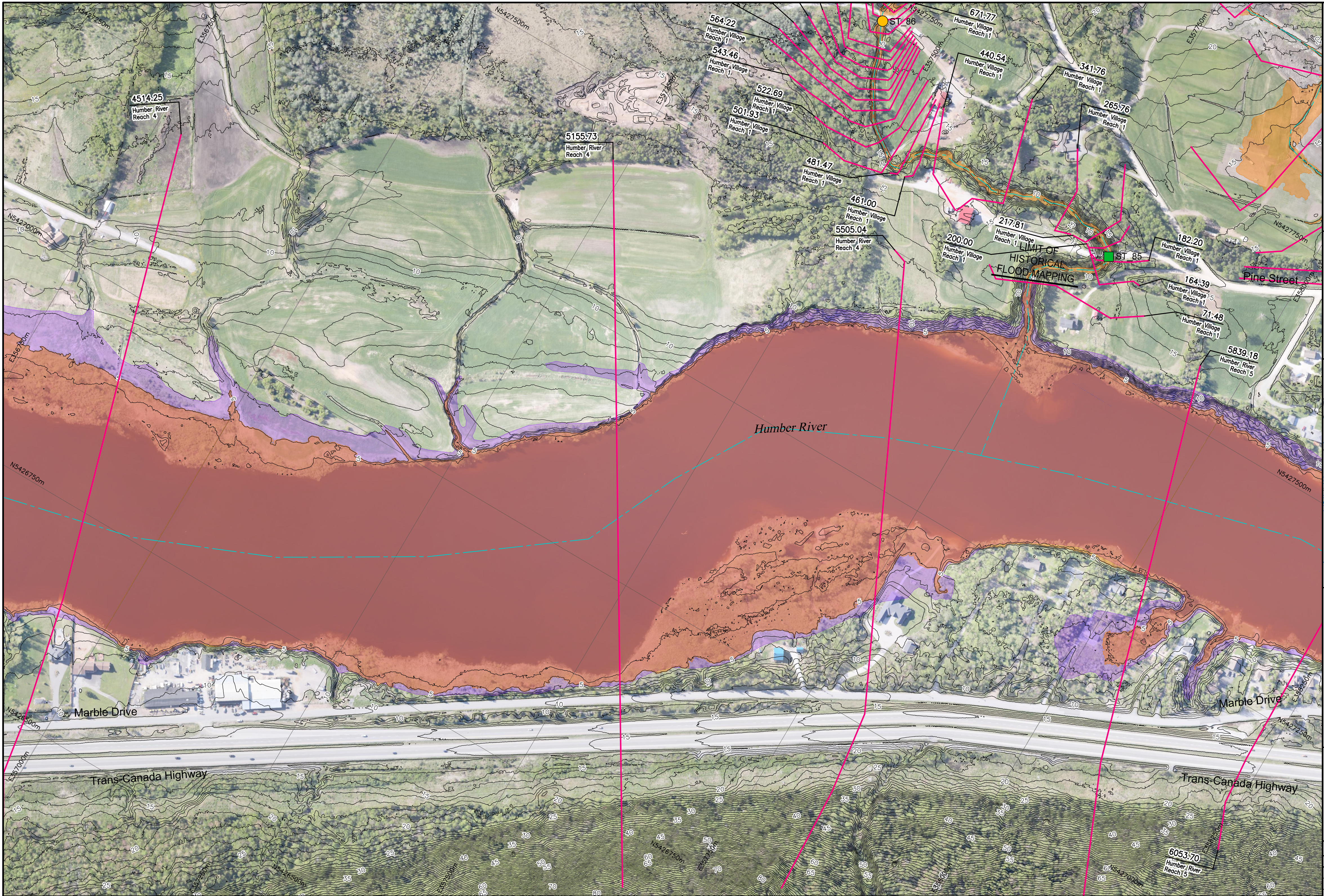


I:\TPB188156 - Humber\06\_DES-ENG\01\_CAD\02\_DWG\05\_WR\01\_PROJ\FloodMaps\Comparison\FZM-CCCD\_HIST\TPB188156-FZM-CCCD\_HIST-20AEP-CM1.dwg

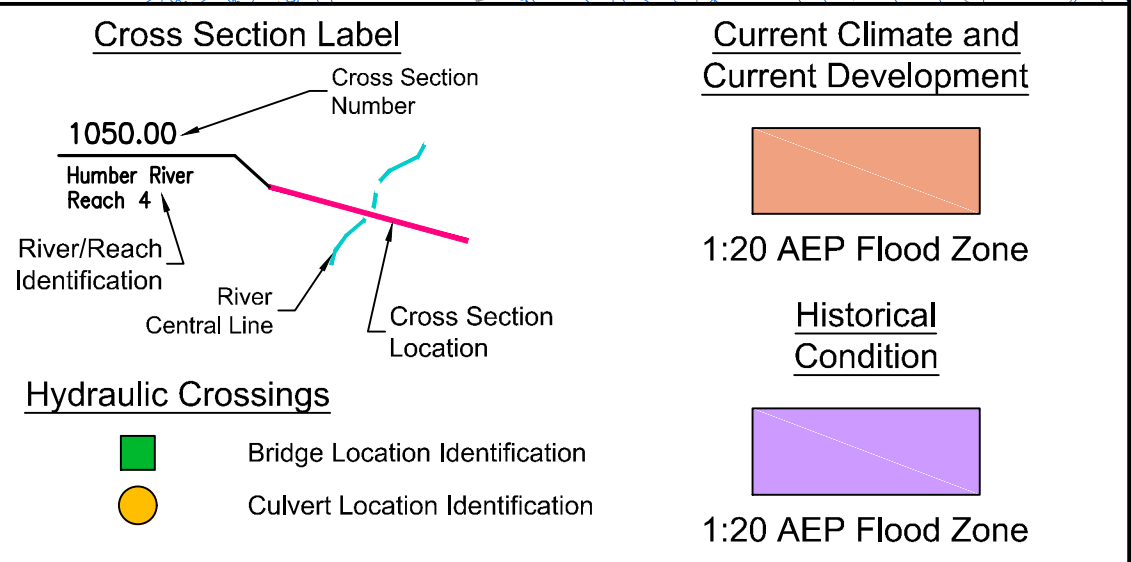
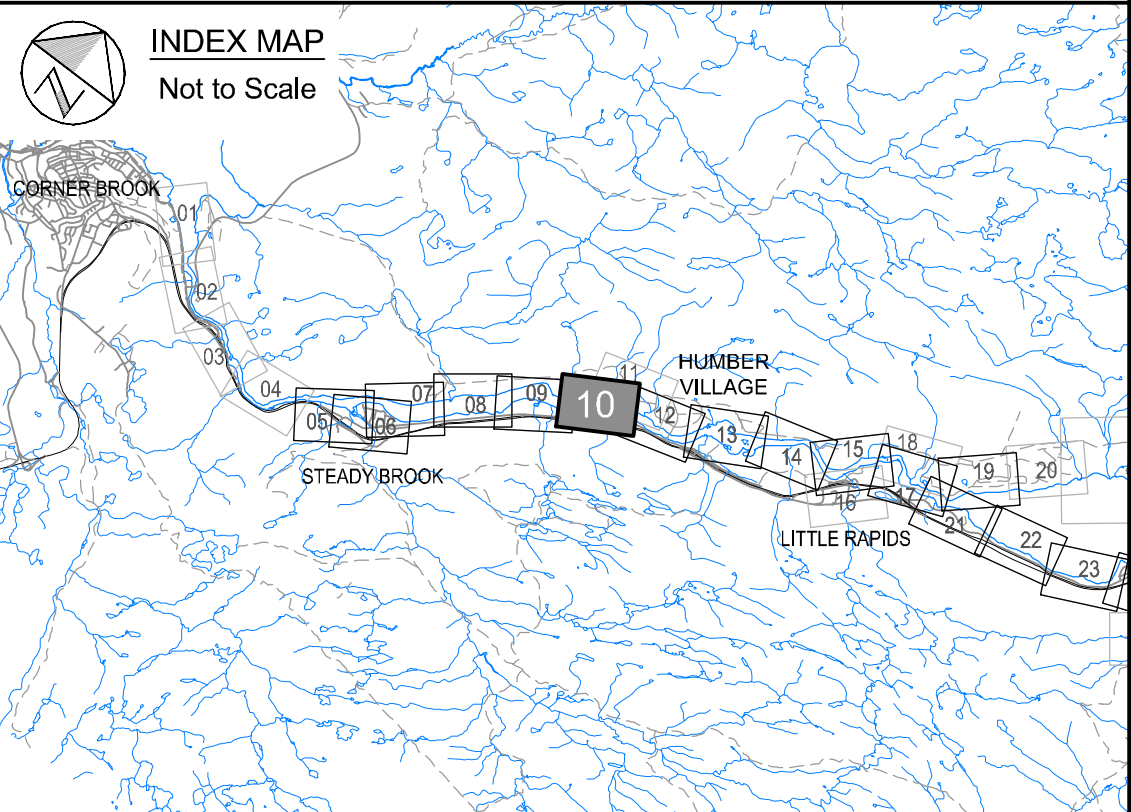


**Newfoundland  
Labrador**  
Department of Environment,  
Climate Change, and Municipalities

## Climate Change Flood Risk Map Study Humber River Communities

1:20 AEP Flood Extent Comparison Map  
Current Climate and Current Development  
to Historical Condition

Humber River  
Humber Village Watercourses



**wood.**

Please note that the Professional Engineer's stamp verifies the flood line and associated data, not the map unless otherwise noted.

R E V I S I O N S			
No.	Description	BY	DATE

Sheet 10 of 90

MTMNAD83  
ZONE 3

SCALE VALID FOR FULL  
SIZE 22"x34" PLOT ONLY

Scale 1:2500

Metres 150 0 150

Feet 300 0 300 600 900

AERIAL PHOTOGRAPHY BY MOSAIC3D, JUNE 9th-14th 2019  
CONTOUR INTERVAL: 1.0 METRE (DATUM CGVD-2013)

NOTE:  
HISTORICAL 1:20 AEP AND 1:100 AEP FLOODLINES  
HAVE BEEN DIGITIZED FROM RASTER 1:10000  
FLOOD INFORMATION MAPS OF DEER LAKE AND  
STEADY BROOK THAT HAVE BEEN GEO-REFERENCED  
USING BEST FIT/RUBBERSHEETING PRACTICES.