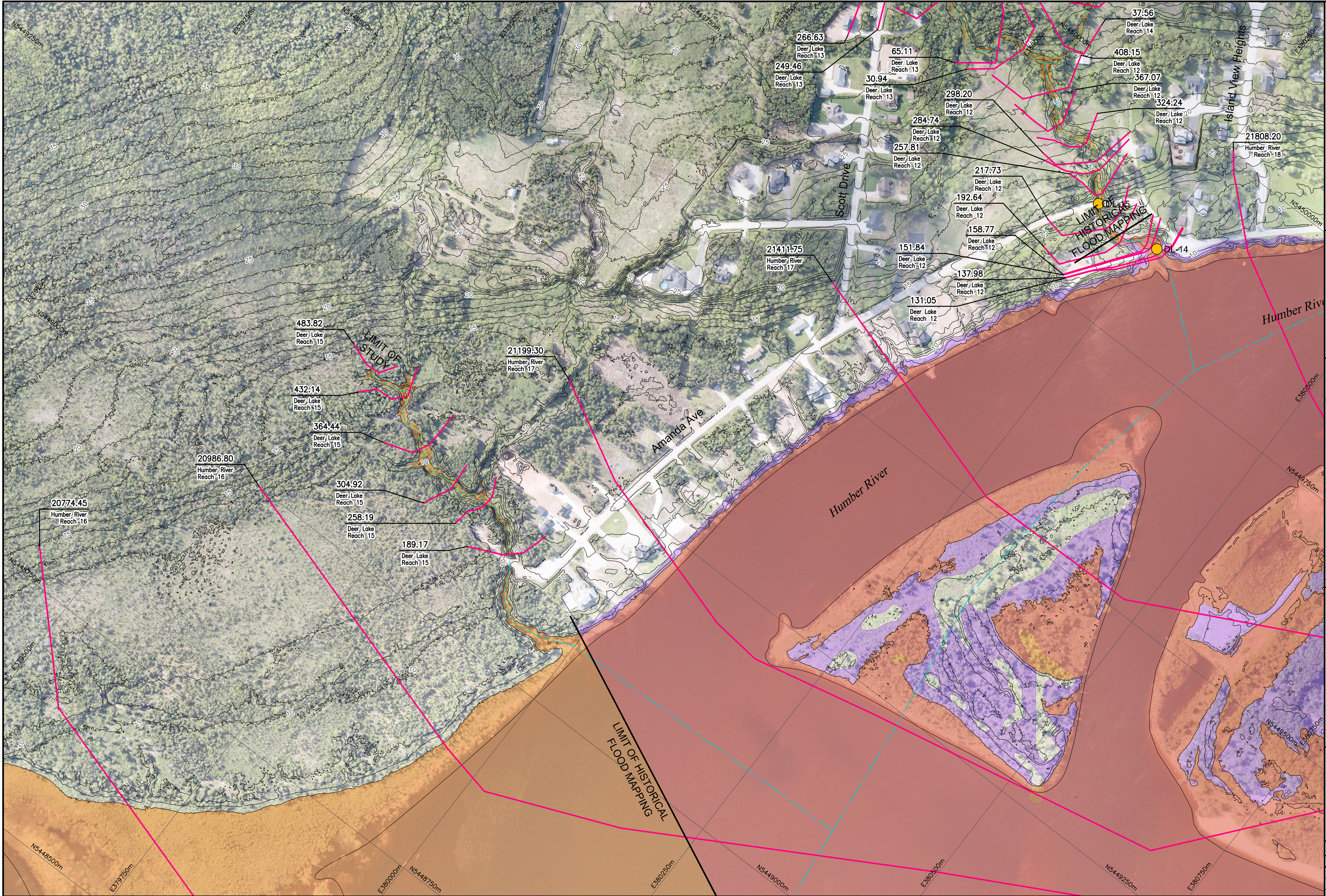


I:\TPB188156 - Humber\06_DES-ENG\01_CAD\02_DWG\05_WR\01_PROJ\FloodMaps\Comparison\FZM-CCCD_HIST-20AEP-CM7.dwg

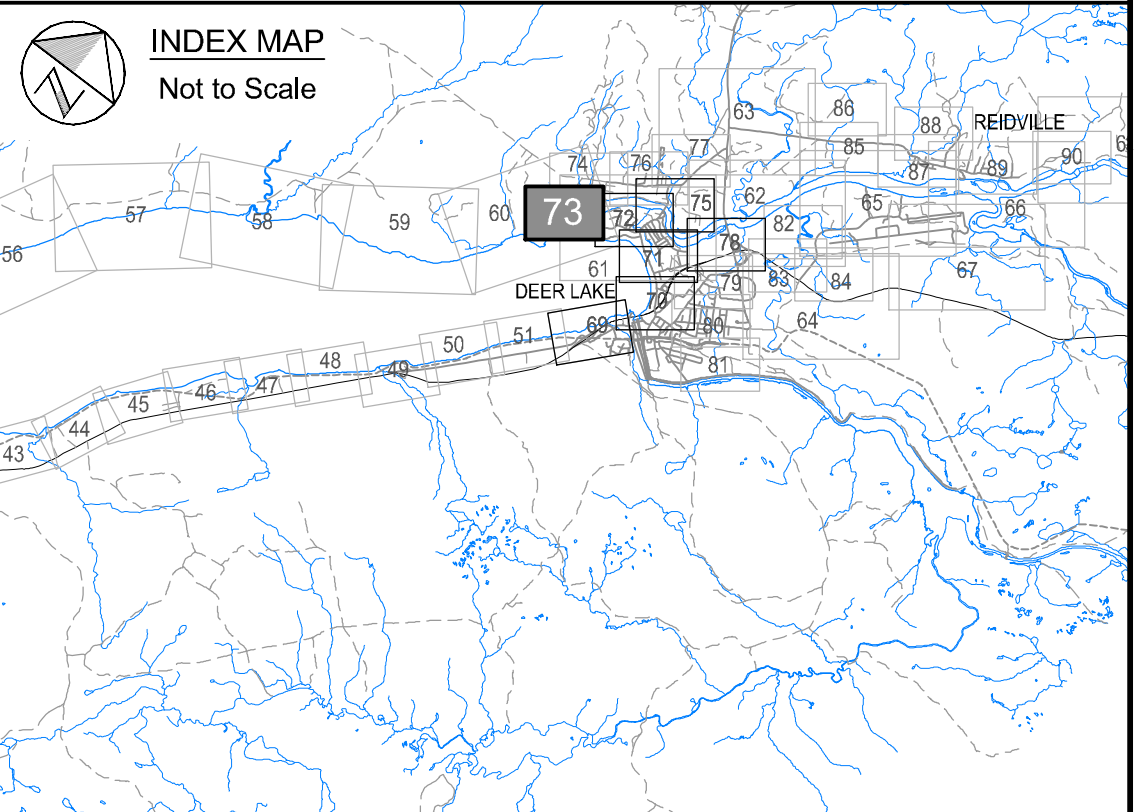



**Newfoundland
Labrador**
Department of Environment,
Climate Change, and Municipalities

Climate Change Flood Risk Map Study Humber River Communities

1:20 AEP Flood Extent Comparison Map
Current Climate and Current Development
to Historical Condition

Humber River
Deer Lake Watercourses



Cross Section Label

1050.00
Humber River
Reach 4

River/Reach
Identification

Cross Section
Number

River
Central Line

Cross Section
Location

**Current Climate and
Current Development**

1:20 AEP Flood Zone


**Historical
Condition**

1:20 AEP Flood Zone

Hydraulic Crossings

Bridge Location Identification

Culvert Location Identification

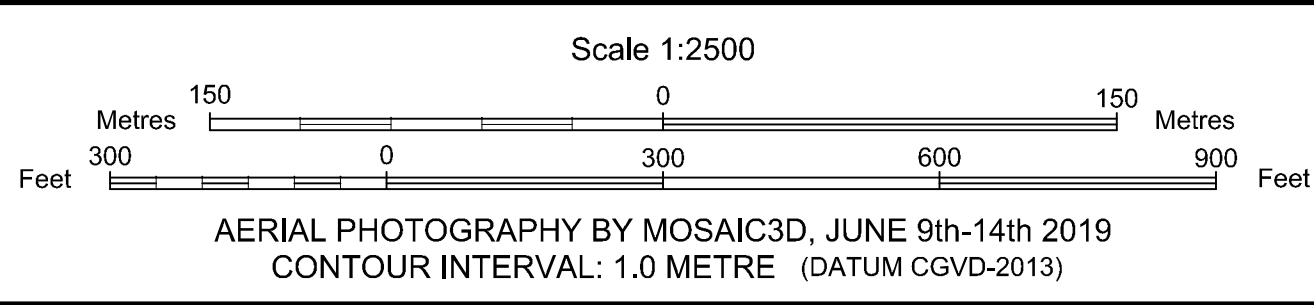

Please note that the Professional
Engineer's stamp verifies the flood
line and associated data, not the
map unless otherwise noted.

R E V I S I O N S			
No.	Description	BY	DATE

Sheet 73 of 90

MTMNAD83
ZONE 3

SCALE VALID FOR FULL
SIZE 22"x34" PLOT ONLY



NOTE:
HISTORICAL 1:20 AEP AND 1:100 AEP FLOODLINES
HAVE BEEN DIGITIZED FROM RASTER 1:10000
FLOOD INFORMATION MAPS OF DEER LAKE AND
STEADY BROOK THAT HAVE BEEN GEO-REFERENCED
USING BEST FIT/RUBBERSHEETING PRACTICES.

