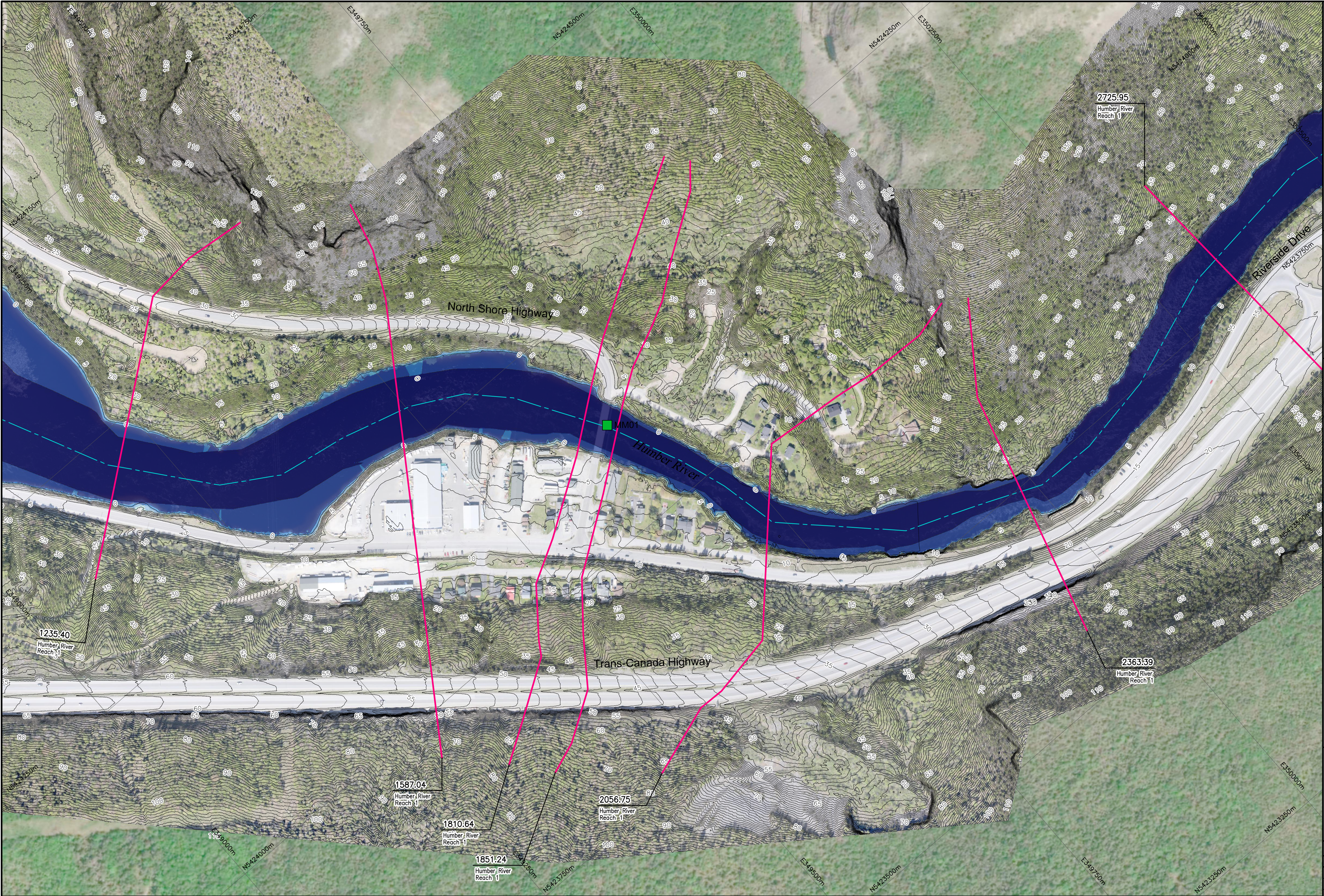


I:\TPB188156 - Humber\06\_DES-ENG\01\_CAD\02\_DWGS\05\_WFR\01\_PROJ\FloodMaps\BaseCase\FDM-CCCD\TPB188156-FDM-CCCD-100AEP-CM1.dwg



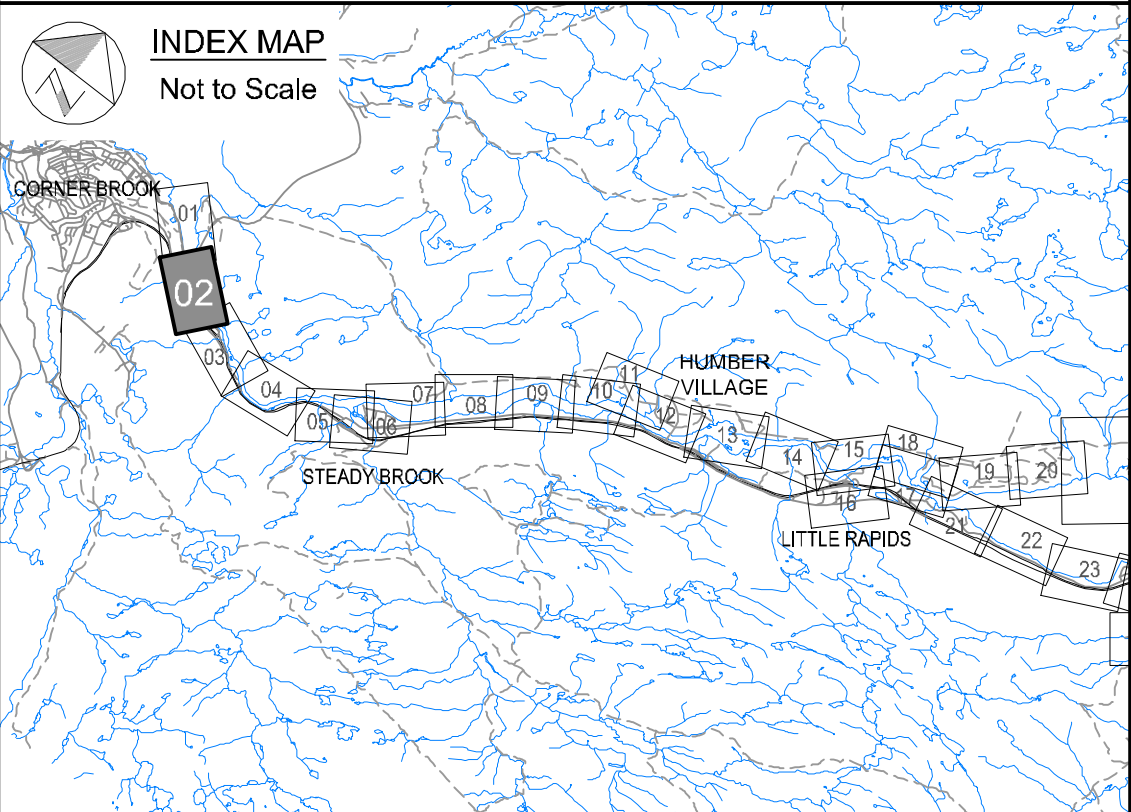


# Newfoundland Labrador

Department of Environment,  
Climate Change, and Municipalities

## Climate Change Flood Risk Map Study Humber River Communities

1:100 AEP Inundation Depth Mapping  
Current Climate and  
Current Development Condition  
Humber River



**Cross Section Label**

1050.00  
Humber River  
Reach 4

River/Reach  
Identification

Cross Section  
Number

River  
Central Line


Cross Section  
Location

**1:100 AEP Inundation Depth**

- 0.0 m - 0.5 m
- 0.5 m - 1.0 m
- 1.0 m - 1.5 m
- 1.5 m - 2.0 m
- Greater than 2.0 m

**Hydraulic Crossings**

- Bridge Location Identification
- Culvert Location Identification



Please note that the Professional  
Engineer's stamp verifies the flood  
line and associated data, not the  
map unless otherwise noted.

R E V I S I O N S			
No.	Description	BY	DATE

Sheet 02 of 90

MTMNAD83  
ZONE 3

Scale 1:2500

Metres 150 0 150 300 0 300 600 900 Feet

AERIAL PHOTOGRAPHY BY MOSAIC3D, JUNE 9th-14th 2019  
CONTOUR INTERVAL: 1.0 METRE (DATUM CGVD-2013)

