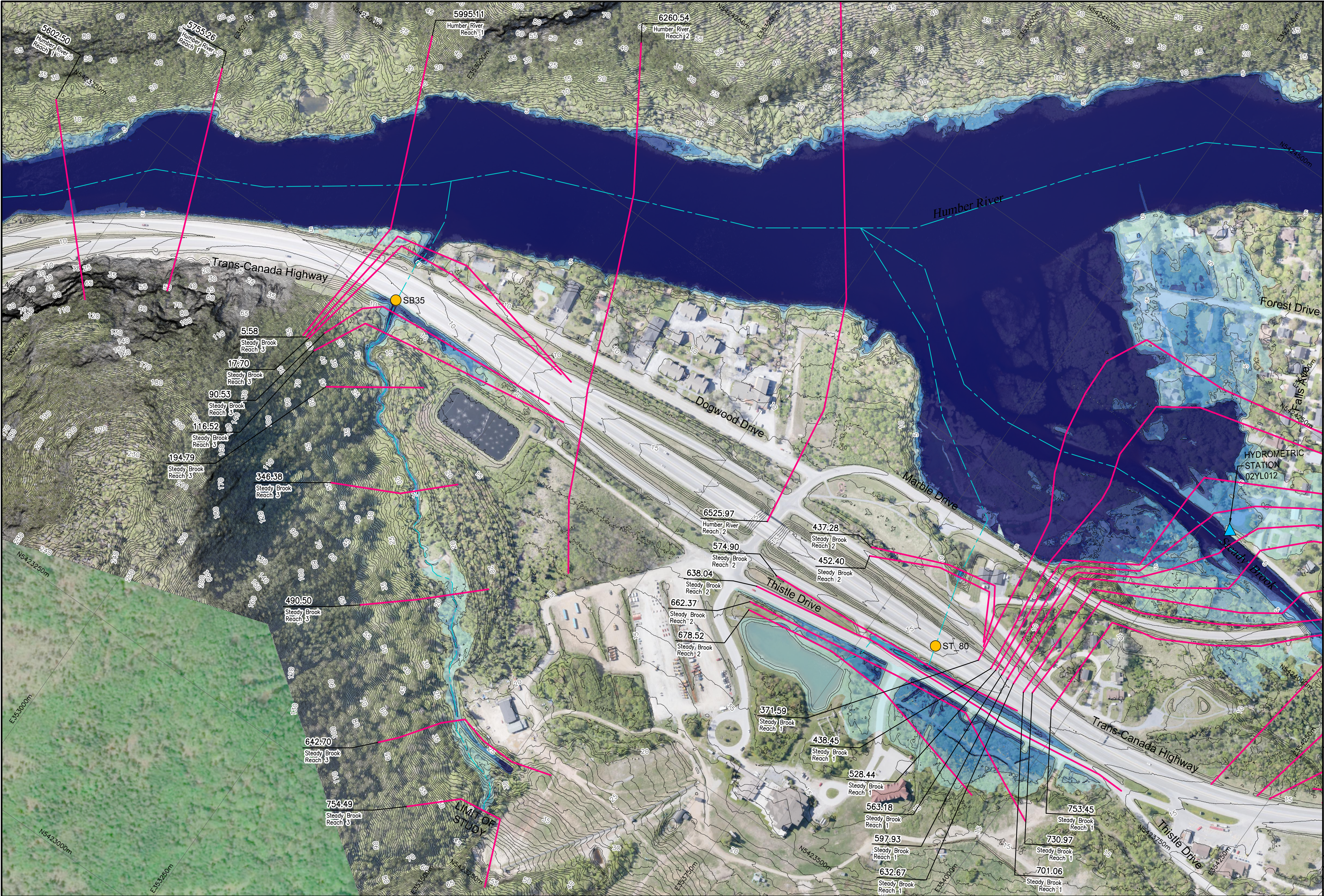


I:\TPB188156 - Humber\06_DES-ENG\01_CAD\02_DWGS\05_WRI\01_PROJ\FloodMaps\Bases\Case FDM-CCCD\TPB188156-FDM-CCCD-100AEP-CM1.dwg



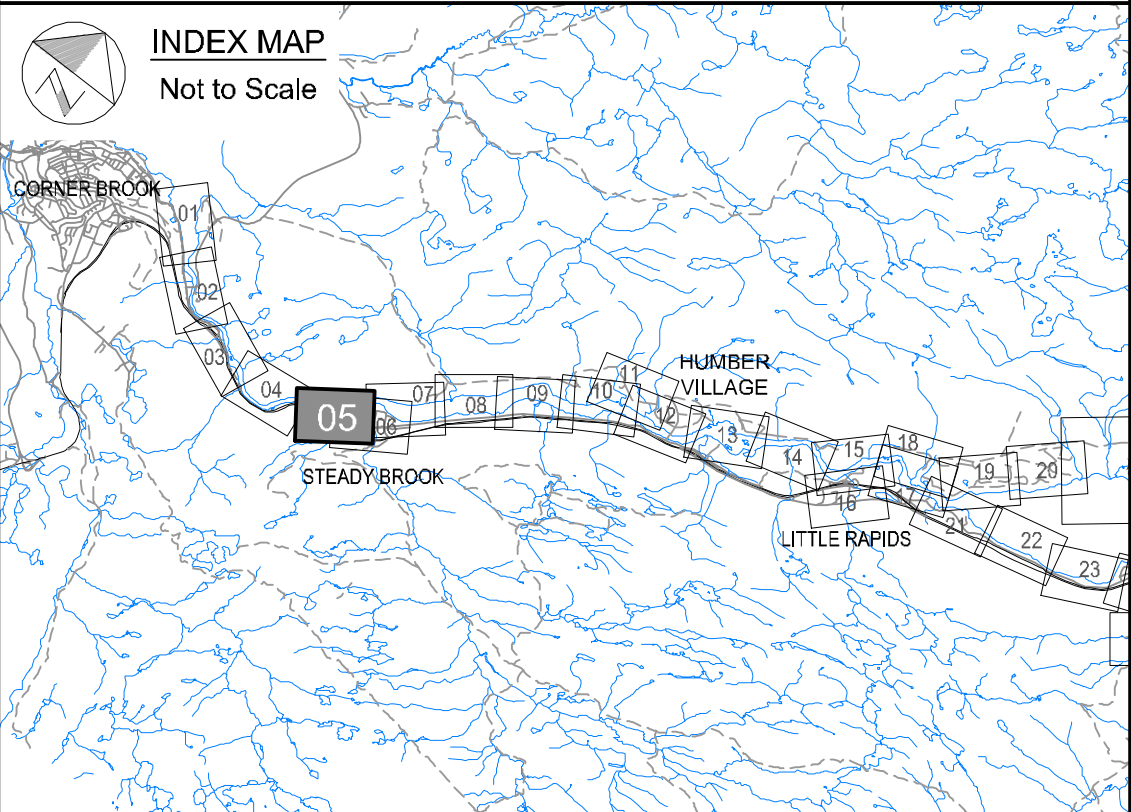


Newfoundland Labrador

Department of Environment,
Climate Change, and Municipalities

Climate Change Flood Risk Map Study Humber River Communities

1:100 AEP Inundation Depth Mapping
Current Climate and
Current Development Condition
Humber River
Steady Brook Watercourses



Cross Section Label

1050.00
Humber River
Reach 4

**River/Reach
Identification**

River
Central Line

**Cross Section
Location**

1:100 AEP Inundation Depth

0.0 m - 0.5 m
0.5 m - 1.0 m
1.0 m - 1.5 m
1.5 m - 2.0 m
Greater than 2.0 m

Hydraulic Crossings

Green square	Bridge Location Identification
Yellow circle	Culvert Location Identification



Please note that the Professional
Engineer's stamp verifies the flood
line and associated data, not the
map unless otherwise noted.

R E V I S I O N S			
No.	Description	BY	DATE

Sheet 05 of 90

MTMNAD83
ZONE 3

SCALE VALID FOR FULL
SIZE 22"x34" PLOT ONLY

