

I:\TPB188156 - Humber\06_DES-ENG\01_CAD\02_DWGS\05_WFR\01_PROJ\FloodMaps\BaseCase\FDM-CCCD\TPB188156-FDM-CCCD-100AEP-CN5.dwg





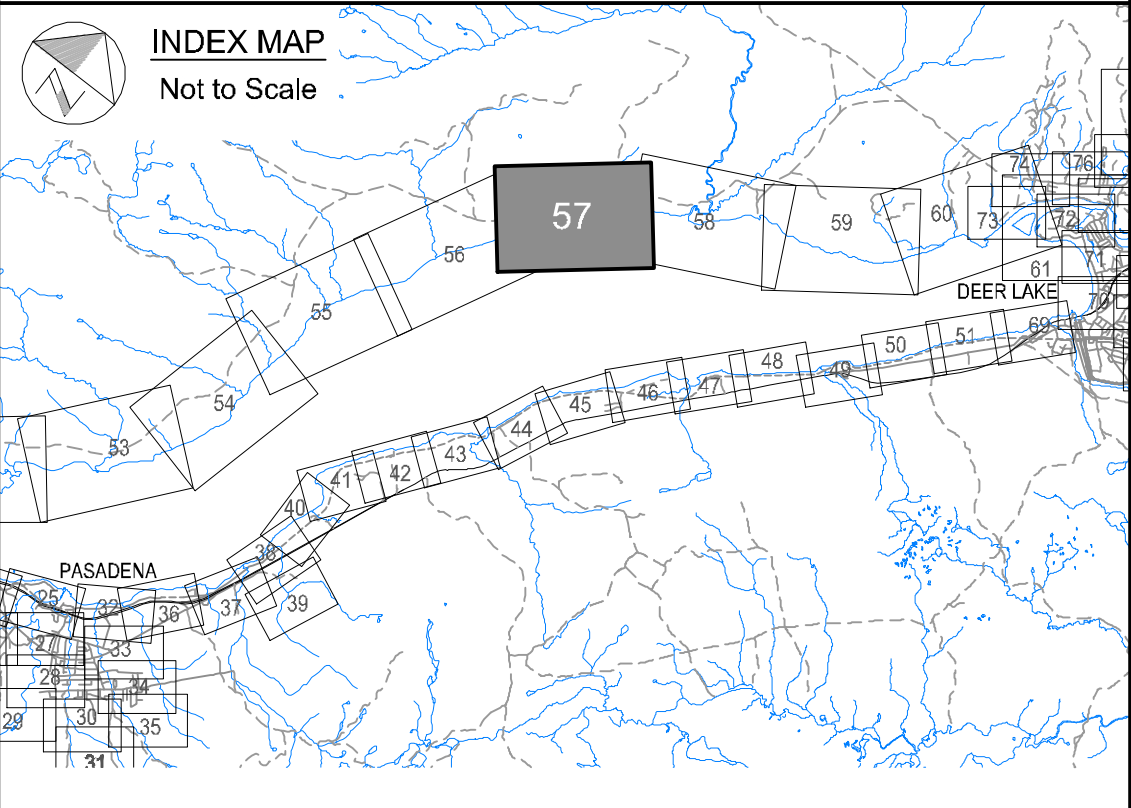
Newfoundland Labrador

Department of Environment,
Climate Change, and Municipalities

Climate Change Flood Risk Map Study Humber River Communities

1:100 AEP Inundation Depth Mapping
Current Climate and
Current Development Condition

Deer Lake



Cross Section Label

1050.00
Humber River
Reach 4
River/Reach
Identification

Cross Section
Number

River
Central Line

Cross Section
Location

1:100 AEP Inundation Depth

- 0.0 m - 0.5 m
- 0.5 m - 1.0 m
- 1.0 m - 1.5 m
- 1.5 m - 2.0 m
- Greater than 2.0 m

Hydraulic Crossings

- Bridge Location Identification
- Culvert Location Identification



Please note that the Professional
Engineer's stamp verifies the flood
line and associated data, not the
map unless otherwise noted.

R E V I S I O N S			
No.	Description	BY	DATE

Sheet 57 of 90

MTMNAD83
ZONE 3

Scale 1:5000

Metres 300 0 300 Metres
Feet 600 0 600 1200 1800 Feet

AERIAL PHOTOGRAPHY BY MOSAIC3D, JUNE 2019
CONTOUR INTERVAL: 5.0 METRES (DATUM CGVD-2013)

