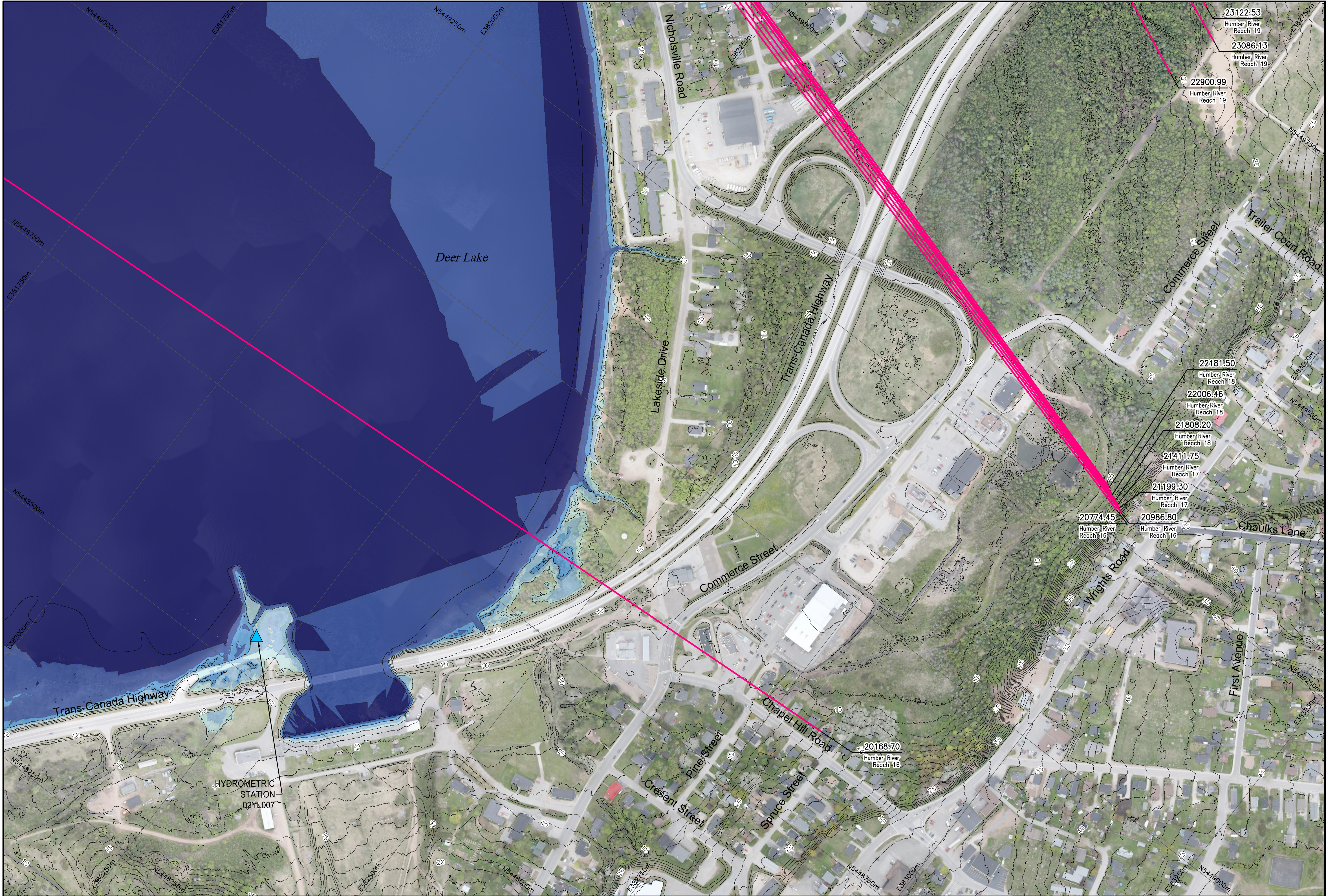


I:\TPB188156 - Humber\06_DES-ENG\01_CAD\02_DWGS\05_WRI\01_PROJ\FloodMaps\Bases\Case\FDM-CCCD\TPB188156-FDM-CCCD-100AEP-CM7.dwg





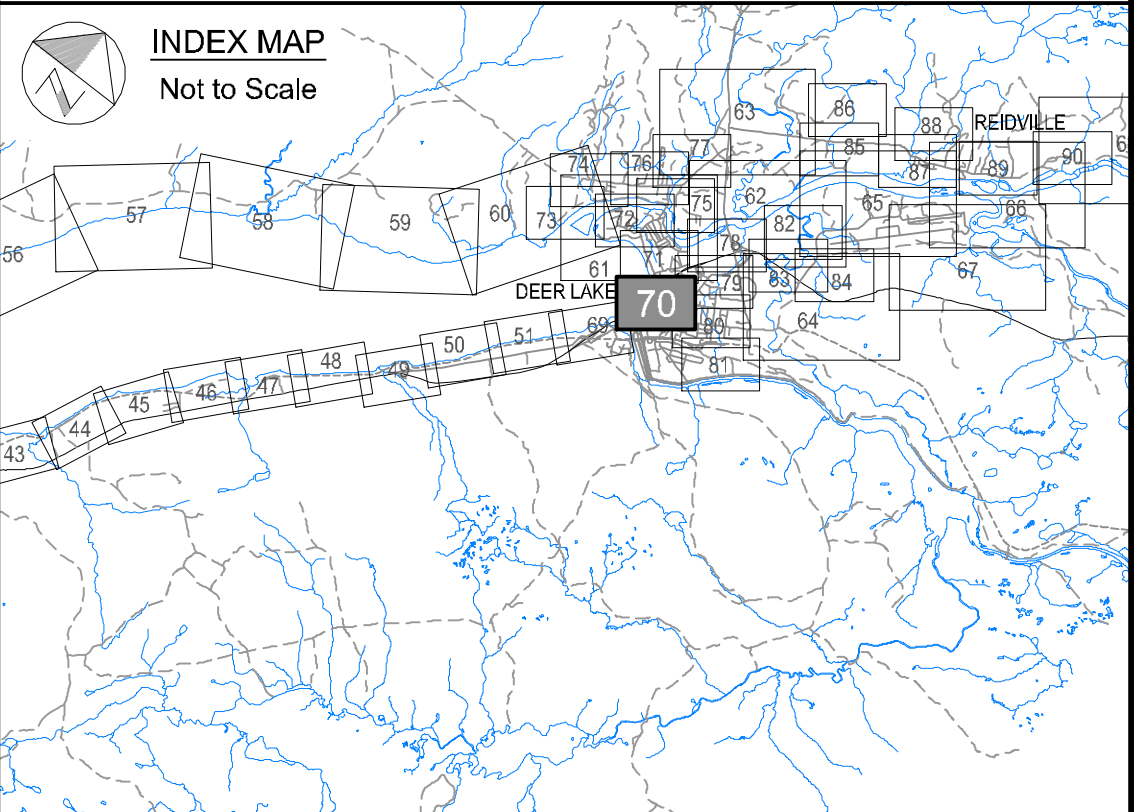
Newfoundland Labrador

Department of Environment,
Climate Change, and Municipalities

Climate Change Flood Risk Map Study Humber River Communities

1:100 AEP Inundation Depth Mapping
Current Climate and
Current Development Condition

Deer Lake



Cross Section Label

1050.00
Humber River
Reach 4

**River/Reach
Identification**

**Cross Section
Number**

**River
Central Line**


**Cross Section
Location**

1:100 AEP Inundation Depth

- 0.0 m - 0.5 m
- 0.5 m - 1.0 m
- 1.0 m - 1.5 m
- 1.5 m - 2.0 m
- Greater than 2.0 m

Hydraulic Crossings

- Bridge Location Identification
- Culvert Location Identification



Please note that the Professional Engineer's stamp verifies the flood line and associated data, not the map unless otherwise noted.

R E V I S I O N S			
No.	Description	BY	DATE

Sheet 70 of 90

MTMNAD83
ZONE 3

Scale 1:2500

Metres 150 0 150
Feet 300 0 300 600 900

AERIAL PHOTOGRAPHY BY MOSAIC3D, JUNE 9th-14th 2019
CONTOUR INTERVAL: 1.0 METRE (DATUM CGVD-2013)

