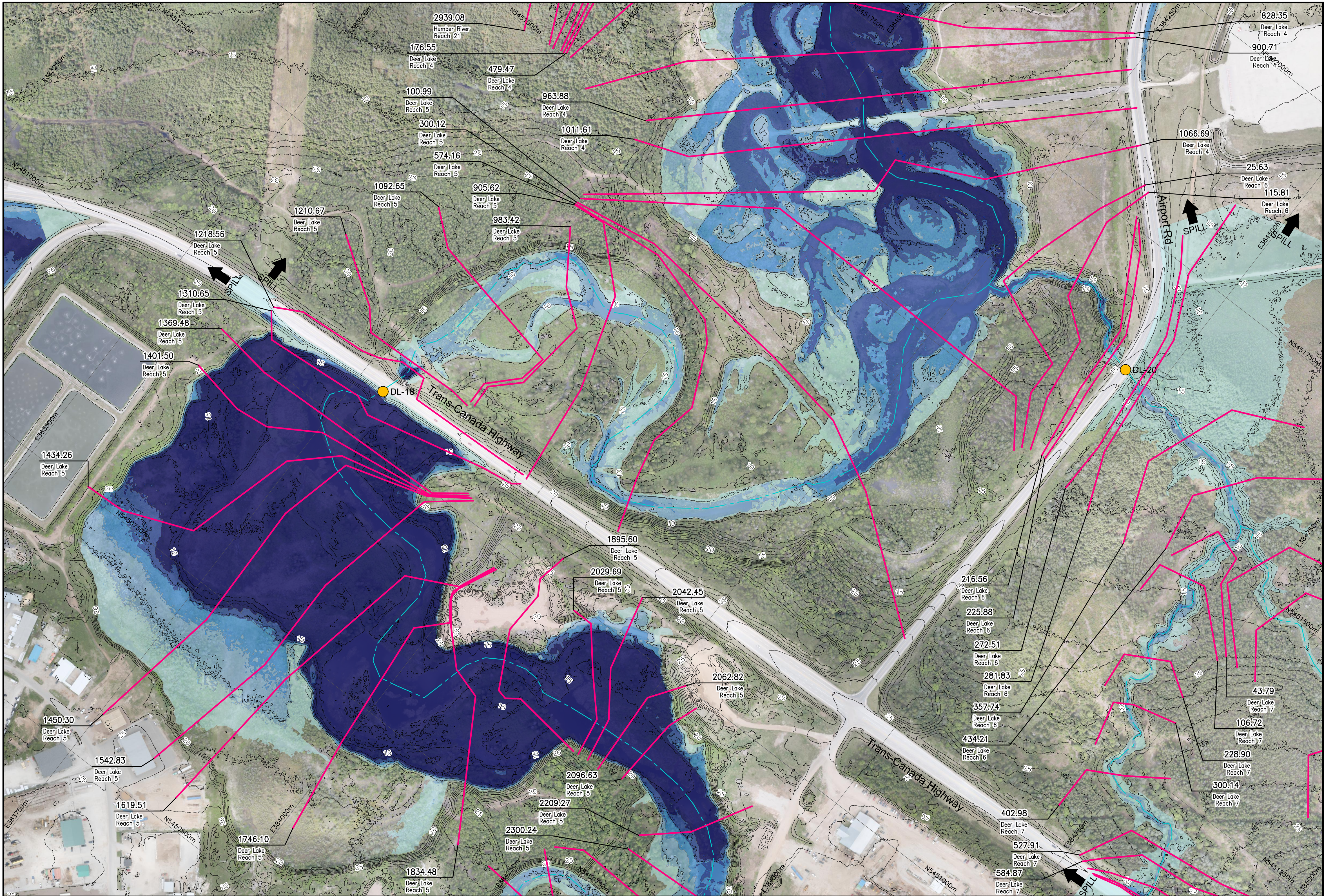



I:\TP188156 - Humber\06_DES-ENG\01_CAD\02_DWGS\05_WF\01_PROJ\FloodMaps\BaseCase\FDM-CCCD\TP188156-FDM-CCCD-100AEP-CMS.dwg



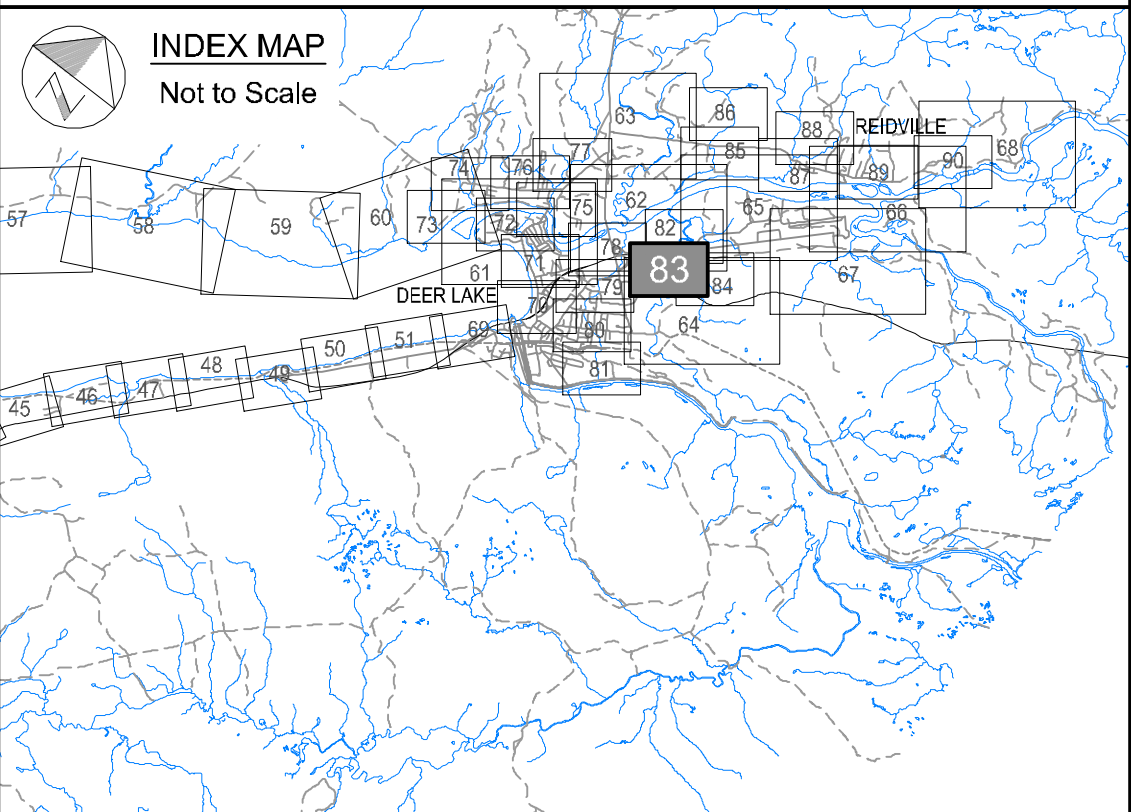


Newfoundland Labrador

Department of Environment,
Climate Change, and Municipalities

Climate Change Flood Risk Map Study Humber River Communities

1:100 AEP Inundation Depth Mapping
Current Climate and
Current Development Condition
Deer Lake Watercourses



Cross Section Label

1050.00
Humber River
Reach 4

River/Reach
Identification

Cross Section
Number

River
Central Line


Cross Section
Location

1:100 AEP Inundation Depth

- 0.0 m - 0.5 m
- 0.5 m - 1.0 m
- 1.0 m - 1.5 m
- 1.5 m - 2.0 m
- Greater than 2.0 m

Hydraulic Crossings

- Bridge Location Identification
- Culvert Location Identification



Please note that the Professional
Engineer's stamp verifies the flood
line and associated data, not the
map unless otherwise noted.

R E V I S I O N S			
No.	Description	BY	DATE

Sheet 83 of 90

MTMNAD83
ZONE 3

SCALE VALID FOR FULL
SIZE 22"x34" PLOT ONLY

Scale 1:2500

Metres 150 0 150
Feet 300 0 300 600 900

AERIAL PHOTOGRAPHY BY MOSAIC3D, JUNE 9th-14th 2019
CONTOUR INTERVAL: 1.0 METRE (DATUM CGVD-2013)

