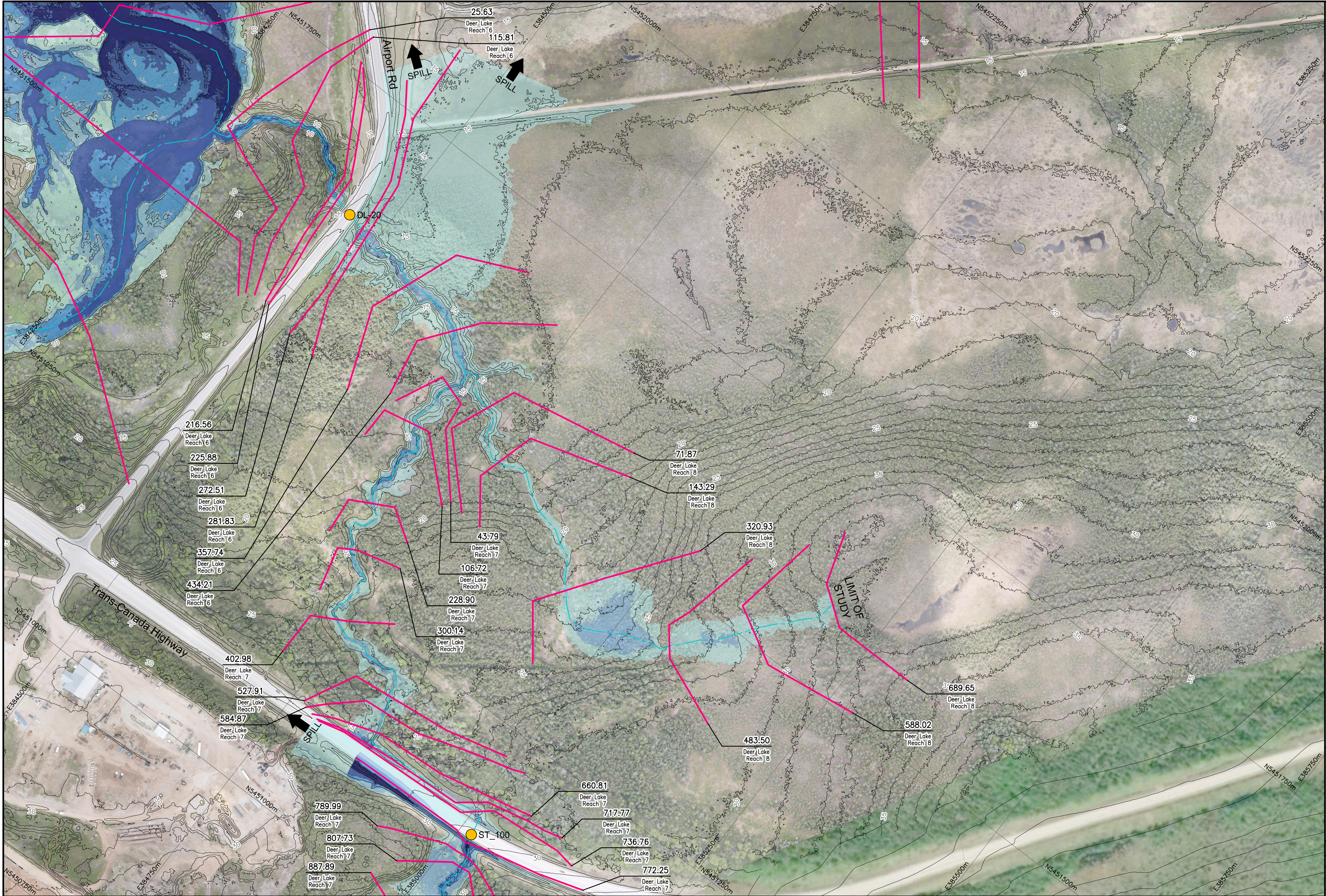



I:\TPB188156 - Humber\06_DES-ENG\01_CAD\02_DWG\05_WFR\01_PROJ\FloodMaps\Bases\FDM-CCCD\TPB188156-FDM-CCCD-100AEP-CMS.dwg



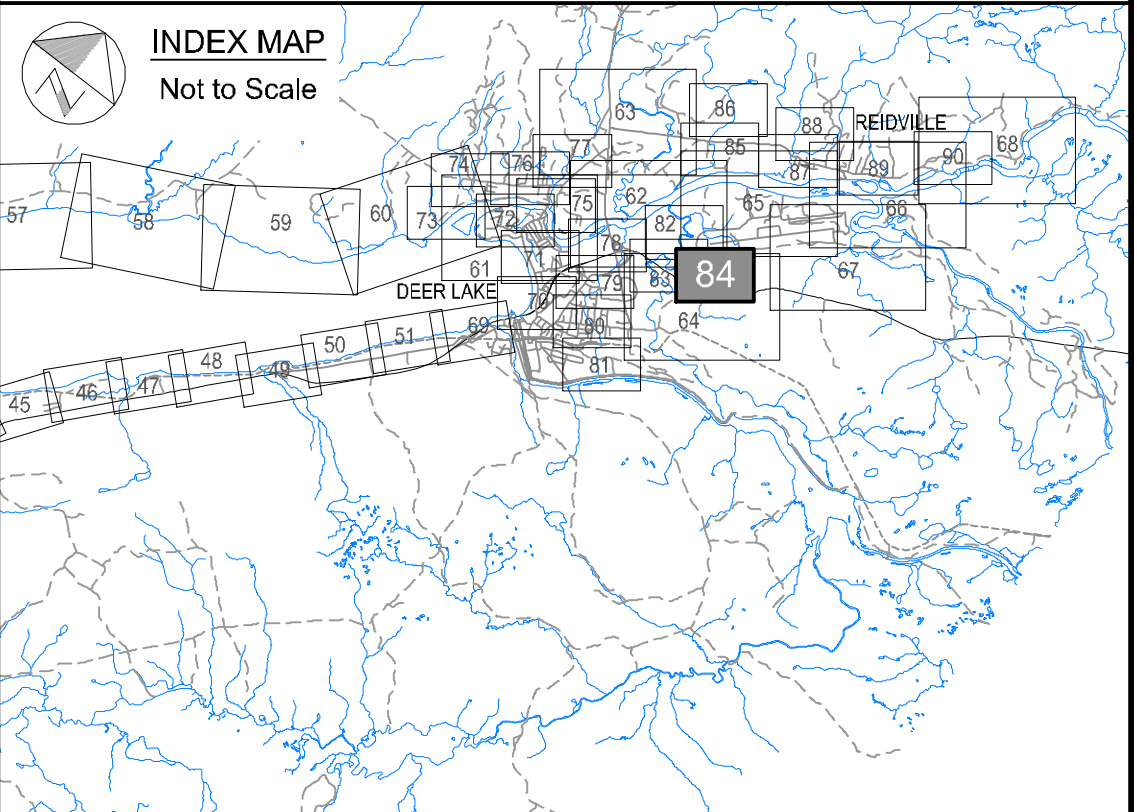


Newfoundland Labrador

Department of Environment,
Climate Change, and Municipalities

Climate Change Flood Risk Map Study Humber River Communities

1:100 AEP Inundation Depth Mapping
Current Climate and
Current Development Condition
Deer Lake Watercourses



Cross Section Label

1050.00
Humber River
Reach 4

River/Reach
Identification

Cross Section
Number

River
Central Line

Cross Section
Location

1:100 AEP Inundation Depth

- 0.0 m - 0.5 m
- 0.5 m - 1.0 m
- 1.0 m - 1.5 m
- 1.5 m - 2.0 m
- Greater than 2.0 m

Hydraulic Crossings

- Bridge Location Identification
- Culvert Location Identification



Please note that the Professional
Engineer's stamp verifies the flood
line and associated data, not the
map unless otherwise noted.

REVISIONS			
No.	Description	BY	DATE

Sheet 84 of 90

MTMNAD83
ZONE 3

SCALE VALID FOR FULL
SIZE 22"x34" PLOT ONLY

Scale 1:2500

Metres 150 0 150
Feet 300 0 300 600 900

AERIAL PHOTOGRAPHY BY MOSAIC3D, JUNE 9th-14th 2019
CONTOUR INTERVAL: 1.0 METRE (DATUM CGVD-2013)

