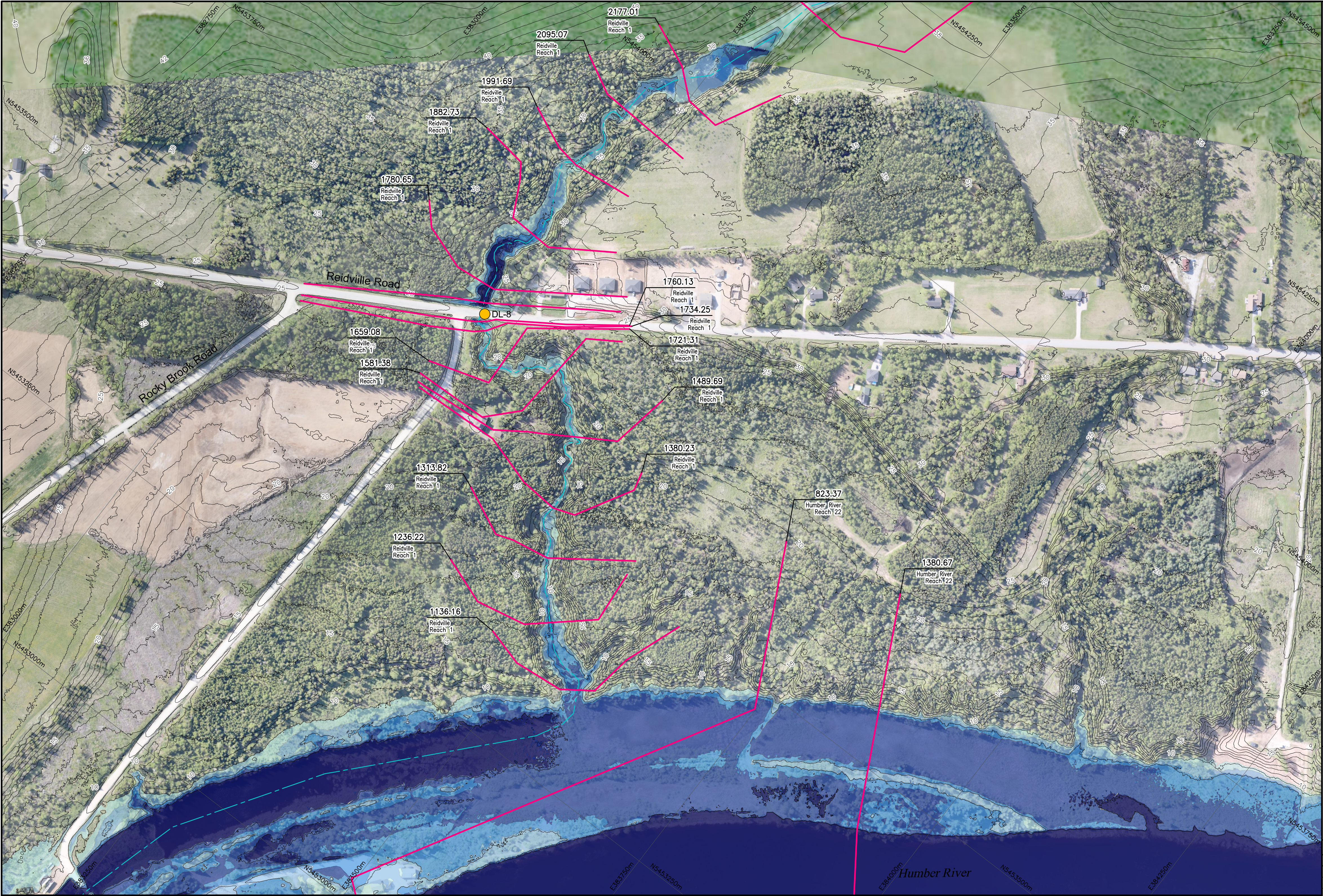


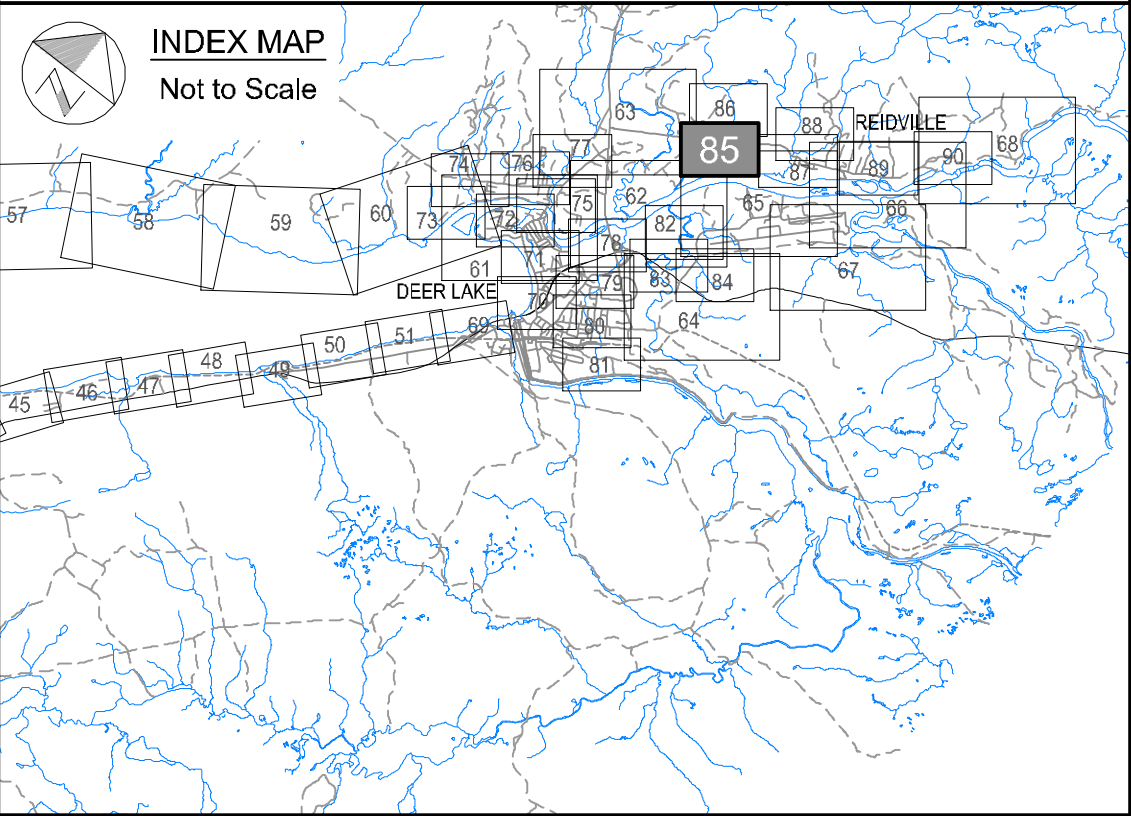
I:\TP188156 - Humber\06_DES-ENG\01_CAD\02_DWG\05_WFR\01_PROJ\FloodMaps\BoseCase\FDM-CCCD\TP188156-FDM-CCCD-100AEP-QM8.dwg




**Newfoundland
Labrador**
Department of Environment,
Climate Change, and Municipalities

**Climate Change
Flood Risk Map Study
Humber River Communities**

1:100 AEP Inundation Depth Mapping
Current Climate and
Current Development Condition
Humber River
Reidville Watercourses



Cross Section Label
1050.00
Humber River
Reich 4
River/Reich
Identification
Cross Section
Number
River
Central Line
Cross Section
Location

1:100 AEP Inundation Depth
0.0 m - 0.5 m
0.5 m - 1.0 m
1.0 m - 1.5 m
1.5 m - 2.0 m
Greater than 2.0 m

Hydraulic Crossings
Bridge Location Identification
Culvert Location Identification

wood.

Please note that the Professional Engineer's stamp verifies the flood line and associated data, not the map unless otherwise noted.

R E V I S I O N S			
No.	Description	BY	DATE

Sheet 85 of 90

MTMNAD83
ZONE 3

SCALE VALID FOR FULL
SIZE 22"x34" PLOT ONLY

Scale 1:2500
Metres 150 0 150
Feet 300 0 300 600 900
AERIAL PHOTOGRAPHY BY MOSAIC3D, JUNE 9th-14th 2019
CONTOUR INTERVAL: 1.0 METRE (DATUM CGVD-2013)