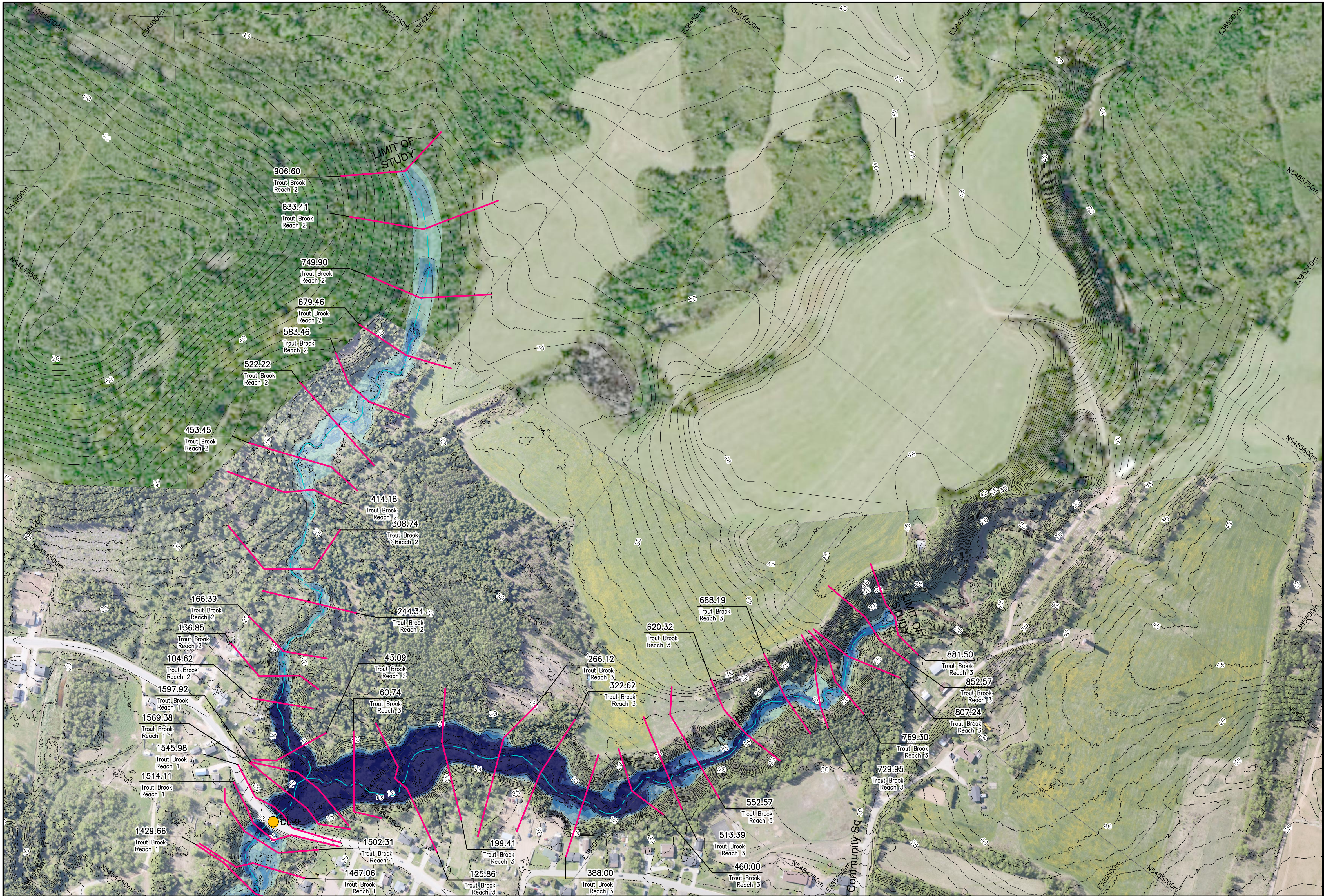


I:\TPB188156 - Humber\06_DES-ENG\01_CAD\02_DWGS\05_WFR\01_PROJ\FloodMaps\BaseCase\FDM-CCCD\TPB188156-FDM-CCCD-100AEP-CM8.dwg

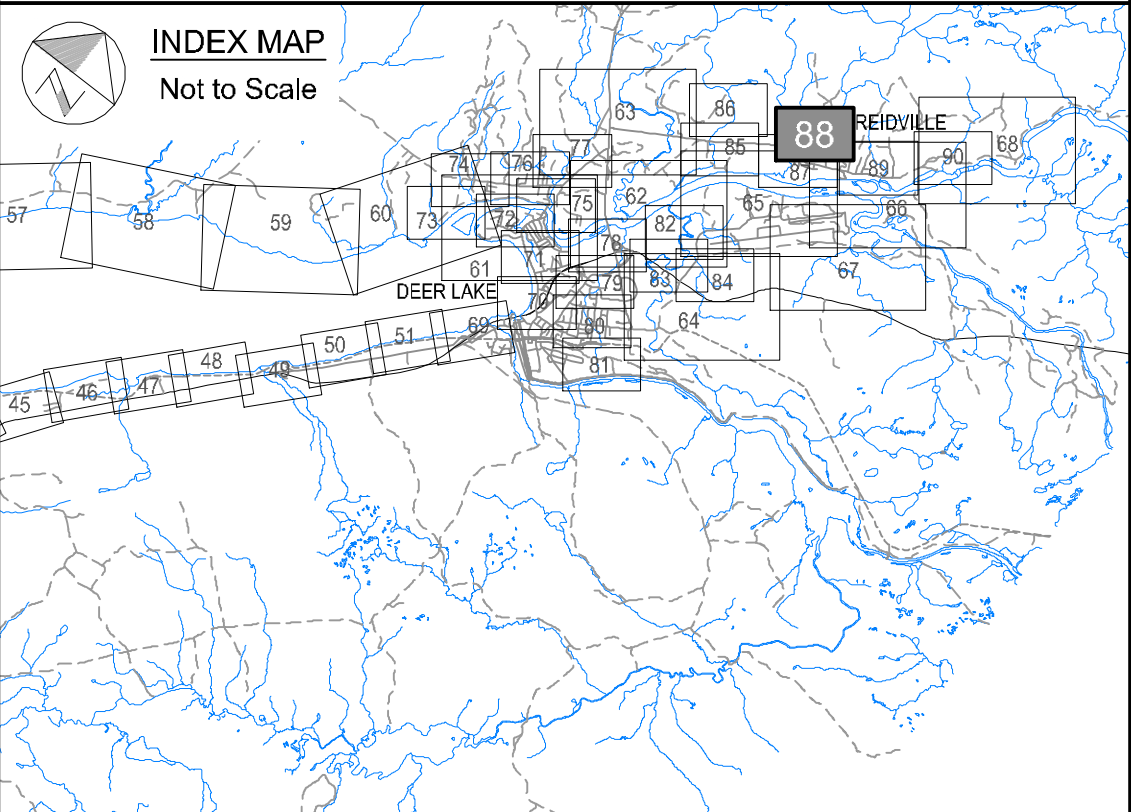


**Newfoundland
Labrador**
Department of Environment,
Climate Change, and Municipalities

**Climate Change
Flood Risk Map Study
Humber River Communities**

1:100 AEP Inundation Depth Mapping
Current Climate and
Current Development Condition

Trout Brook



Cross Section Label

1050.00
Humber River Reach 4
River/Reach Identification

Cross Section Number
Cross Section Location

1:100 AEP Inundation Depth

- 0.0 m - 0.5 m
- 0.5 m - 1.0 m
- 1.0 m - 1.5 m
- 1.5 m - 2.0 m
- Greater than 2.0 m

Hydraulic Crossings

- Bridge Location Identification
- Culvert Location Identification

wood.

Please note that the Professional Engineer's stamp verifies the flood line and associated data, not the map unless otherwise noted.

REVISIONS			
No.	Description	BY	DATE

Sheet 88 of 90

**MTMNAD83
ZONE 3**

SCALE VALID FOR FULL
SIZE 22"x34" PLOT ONLY

Scale 1:2500

AERIAL PHOTOGRAPHY BY MOSAIC3D, JUNE 9th-14th 2019
CONTOUR INTERVAL: 1.0 METRE (DATUM CGVD-2013)

Scale bar: 150 Metres, 0, 150 Metres, 300 Feet, 0, 300, 600, 900 Feet

North arrow