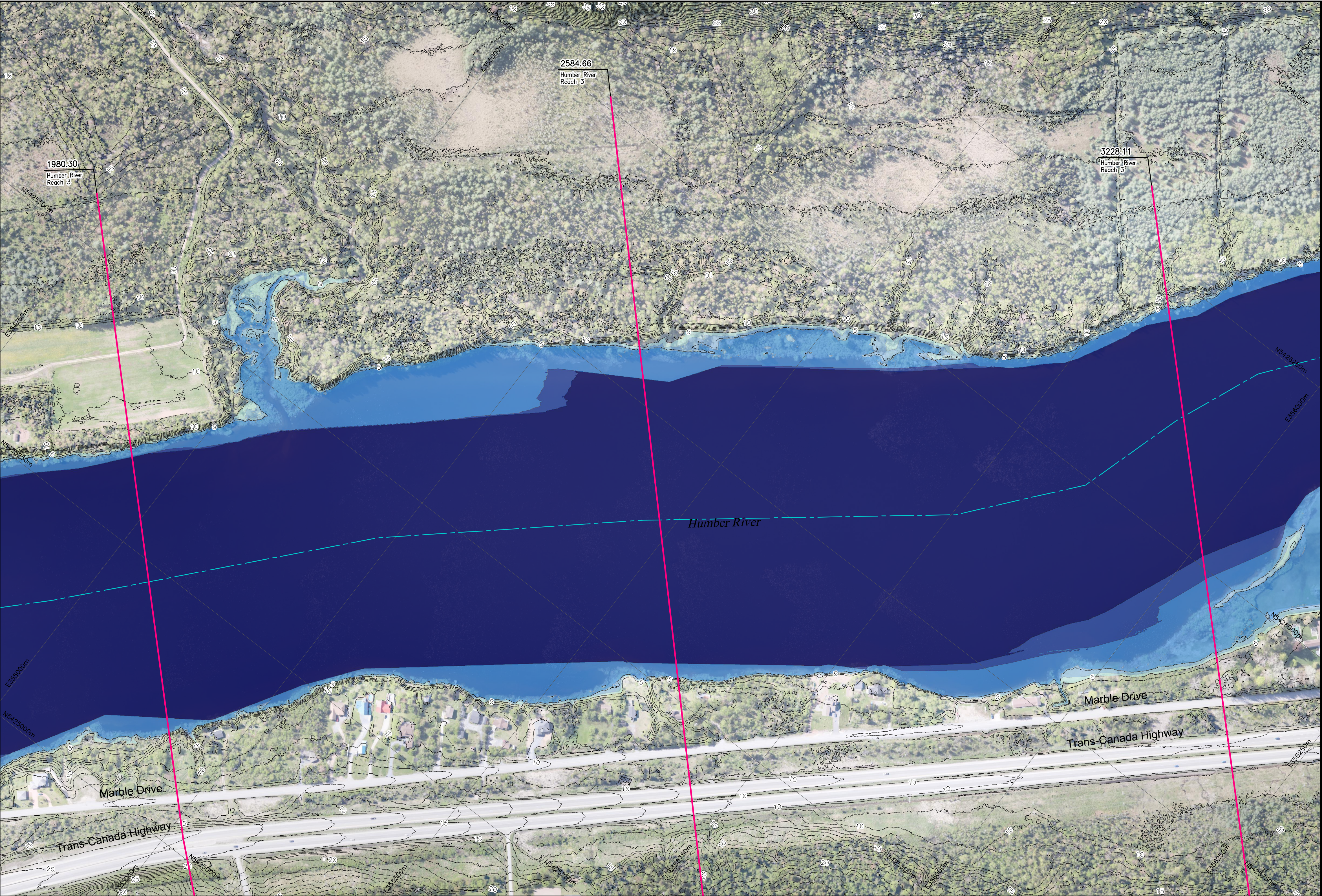


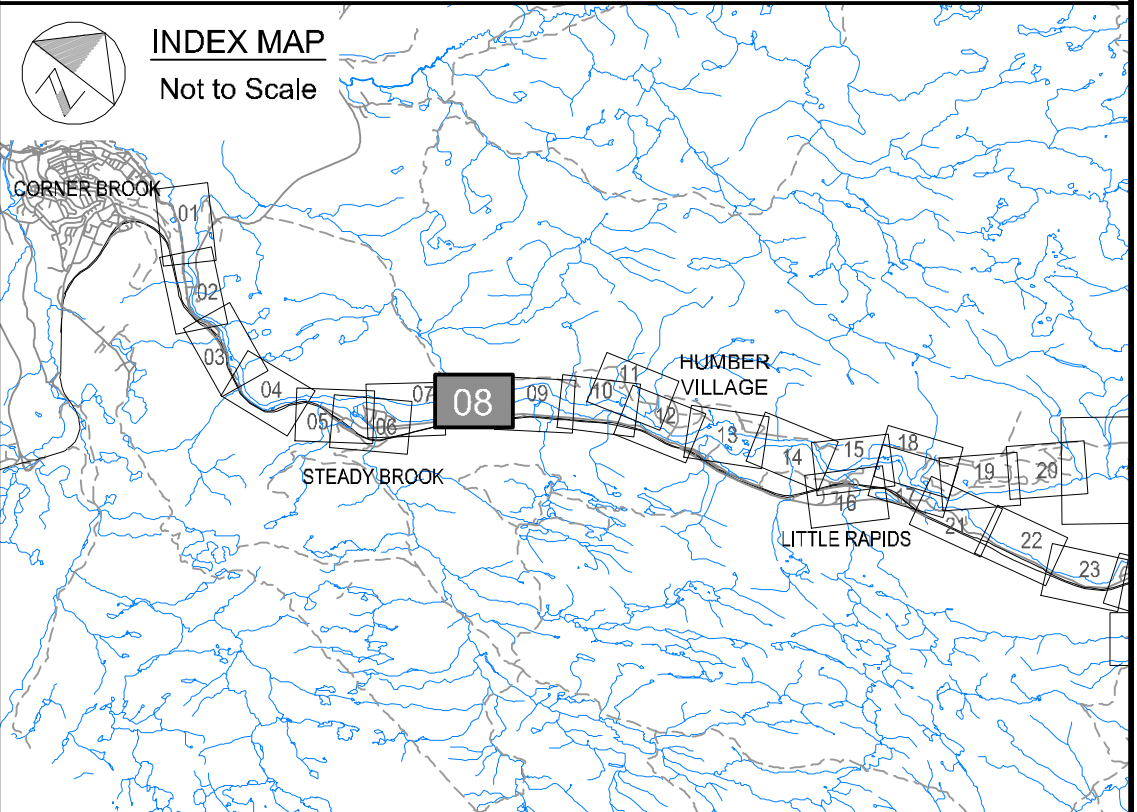
I:\TP188156 - Humber\06\_DES-ENG\01\_CAD\02\_DWG\05\_WF\01\_PROJ\FloodMaps\BaseCase\FDM-CCCD\TP188156-FDM-CCCD-20AEP-CM1.dwg



  
**Newfoundland  
Labrador**  
Department of Environment,  
Climate Change, and Municipalities

**Climate Change  
Flood Risk Map Study  
Humber River Communities**

1:20 AEP Inundation Depth Mapping  
Current Climate and  
Current Development Condition  
  
Humber River



**Cross Section Label**  
1050.00  
Humber River  
Reach 4  
River/Reach  
Identification  
Cross Section  
Number  
River  
Central Line  
Cross Section  
Location

**1:20 AEP Inundation Depth**  
0.0 m - 0.5 m  
0.5 m - 1.0 m  
1.0 m - 1.5 m  
1.5 m - 2.0 m  
Greater than 2.0 m

**Hydraulic Crossings**  
Bridge Location Identification  
Culvert Location Identification

  
Please note that the Professional  
Engineer's stamp verifies the flood  
line and associated data, not the  
map unless otherwise noted.

R E V I S I O N S			
No.	Description	BY	DATE

Sheet 08 of 90

**MTMNAD83  
ZONE 3**

SCALE VALID FOR FULL  
SIZE 22"X34" PLOT ONLY

Scale 1:2500  
Metres 150 0 150  
Feet 300 0 300 600 900  
AERIAL PHOTOGRAPHY BY MOSAIC3D, JUNE 9th-14th 2019  
CONTOUR INTERVAL: 1.0 METRE (DATUM CGVD-2013)

