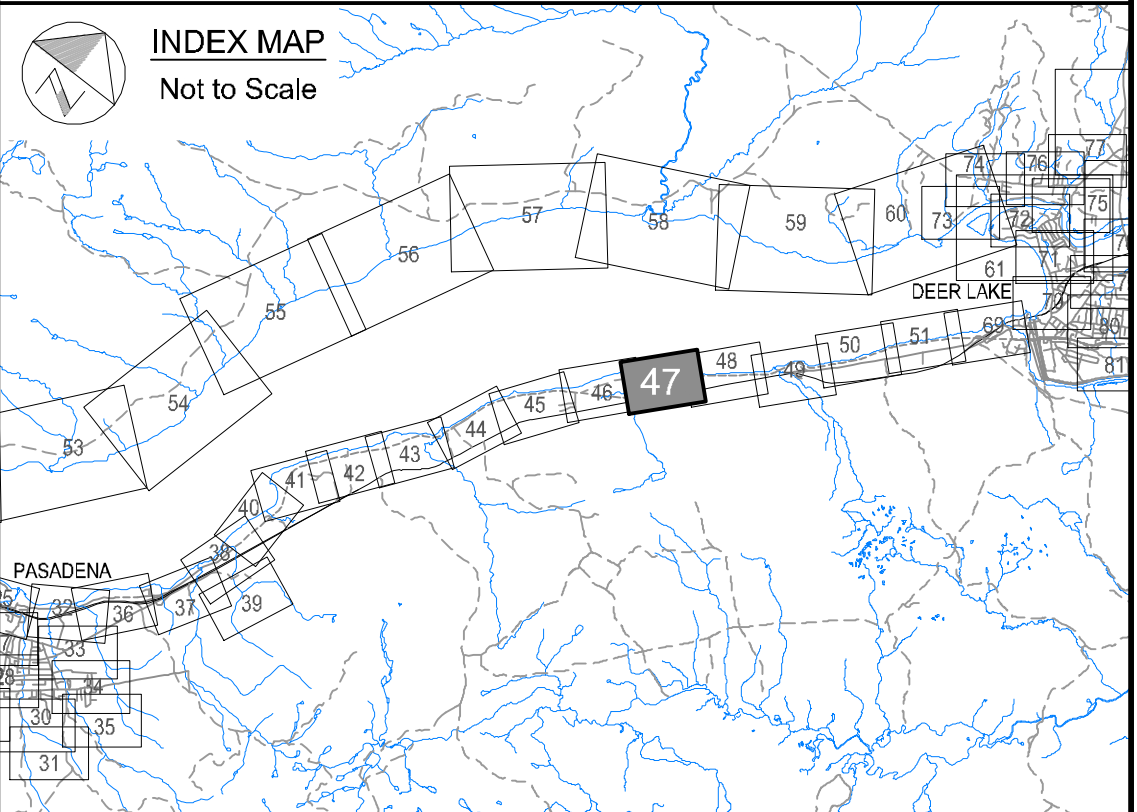
  
**Newfoundland  
Labrador**  
Department of Environment,  
Climate Change, and Municipalities

**Climate Change  
Flood Risk Map Study  
Humber River Communities**

1:20 AEP Inundation Depth Mapping  
Current Climate and  
Current Development Condition

Deer Lake



**Cross Section Label**

1050.00  
Humber River  
Reach 4  
River/Reach  
Identification

Cross Section  
Number

River  
Central Line


Cross Section  
Location

**1:20 AEP Inundation Depth**

- 0.0 m - 0.5 m
- 0.5 m - 1.0 m
- 1.0 m - 1.5 m
- 1.5 m - 2.0 m
- Greater than 2.0 m

**Hydraulic Crossings**

- Bridge Location Identification
- Culvert Location Identification



Please note that the Professional Engineer's stamp verifies the flood line and associated data, not the map unless otherwise noted.

R E V I S I O N S			
No.	Description	BY	DATE

Sheet 47 of 90

I:\TPB188156 - Humber\06\_DES-ENG\01\_CAD\02\_DWG\05\_WF\01\_PROJ\FloodMaps\BaseCase\FDM-CCCD\TPB188156-FDM-CCCD-20AEP-CM4.dwg

MTMNAD83  
ZONE 3

SCALE VALID FOR FULL  
SIZE 22"x34" PLOT ONLY

Scale 1:2500

Metres 150 0 150  
Feet 300 0 300 600 900

AERIAL PHOTOGRAPHY BY MOSAIC3D, JUNE 9th-14th 2019  
CONTOUR INTERVAL: 1.0 METRE (DATUM CGVD-2013)

