

EVREC Green Energy Hub

Wind Project Areas



EVREC

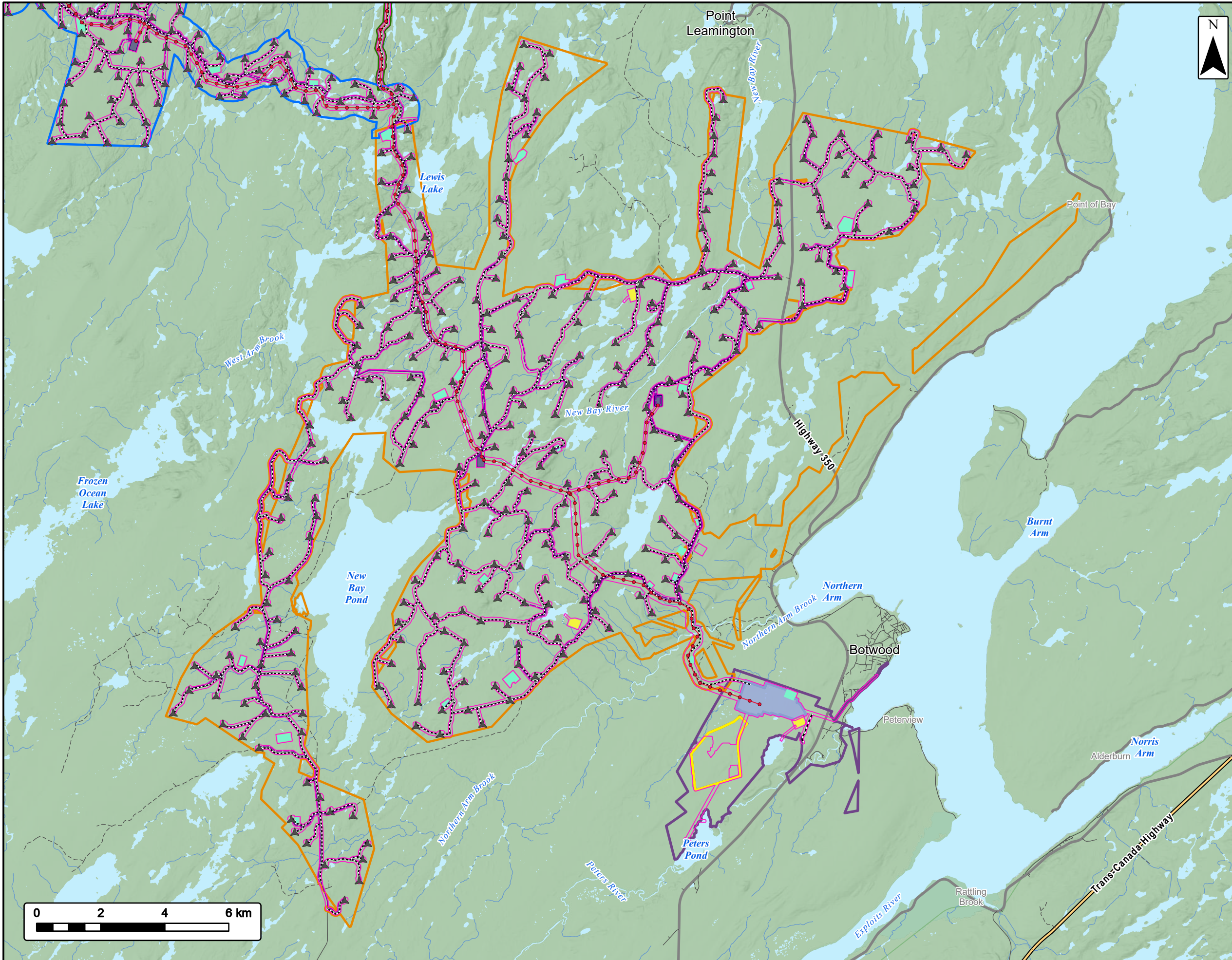
- Wind Project Area
- Project Areas**
- Botwood Wind Project Area
- Leading Tickle Wind Project Area
- Seabrights Lake Wind Project Area
- Twin Lakes Wind Project Area
- Other Project Areas
- Water Features**
- Mapped Waterbodies



Coordinate System: NAD 1983 CSRS UTM Zone 21N
Sources: Esri, NASA, NGA, USGS, GeoNOVA, SNSIS, NSNRR, ACCDC, IBA Canada, CNWI, HERE, Garmin, USGS

Date:	2026-03-30	Project #:	24-10265
Scale:	1:200,000	Drawing #:	6.1-1
Drawn By:	M. Partridge		
Checked By:	L. Eichinger		



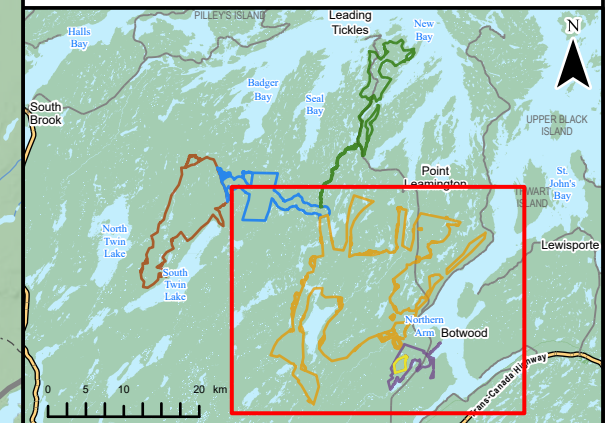


EVREC Green Energy Hub

Project Infrastructure
Botwood Wind Project Area



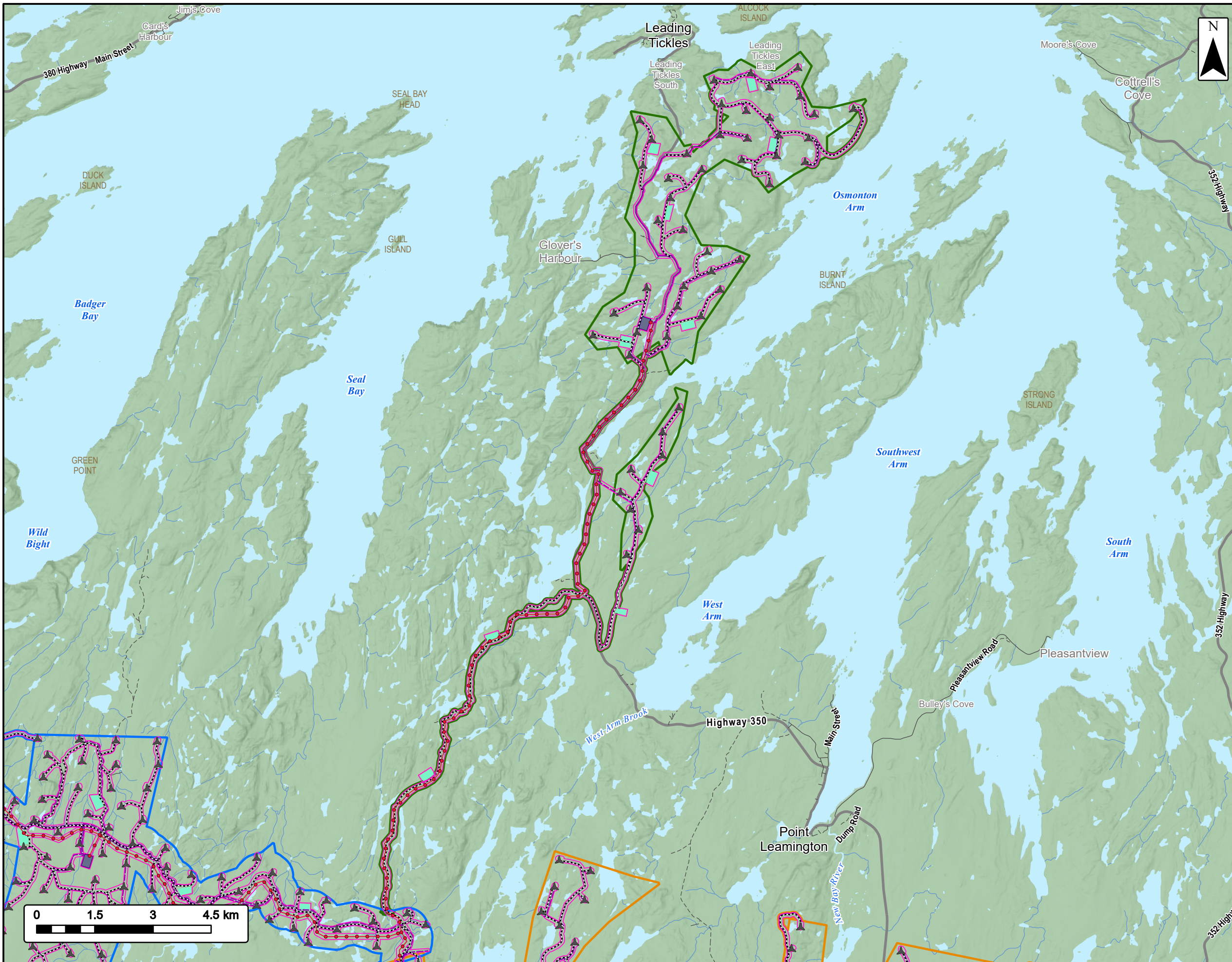
Project Area	Transportation	Water Features
Industrial Project Area	Trans-Canada Highway	Mapped Watercourses
Solar Project Area	Highway	Mapped Waterbodies
Botwood Wind Project Area	Road	
Leading Ticks Wind Project Area	Unpaved Road	
Seabrights Lake Wind Project Area		
Project Footprint		
Industrial Facility Infrastructure Area		
Accommodation		
Quarry		
Substation		
230 kV Transmission Line		
69 kV Collector Line		
Project Road		
Turbine		



Coordinate System: NAD 1983 CSRS UTM Zone 21N
Sources: Esri, NASA, NGA, USGS, GeoNOVA, SNSIS, NSNRR, ACCDC, IBA Canada, CNWI, HERE, Garmin, USGS

Date: 2026-03-30	Project #: 24-10265
Scale: 1:115,000	Drawing #: 6.1-2A
Drawn By: M. Partridge	
Checked By: N. Thomas	



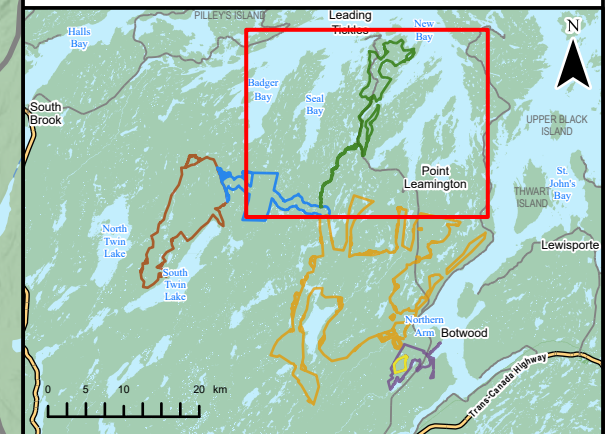


EVREC Green Energy Hub

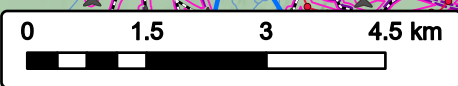
Project Infrastructure
Leading Ticksles Wind Project Area



Project Area		Transportation		Water Features	
Botwood Wind Project Area		Highway		Mapped Watercourses	
Leading Ticksles Wind Project Area		Road		Mapped Waterbodies	
Seabrights Lake Wind Project Area		Unpaved Road			
Project Footprint					
Quarry					
Substation					
230 kV Transmission Line					
69 kV Collector Line					
Project Road					
Turbine					

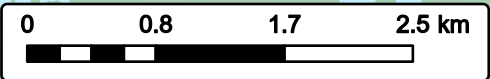
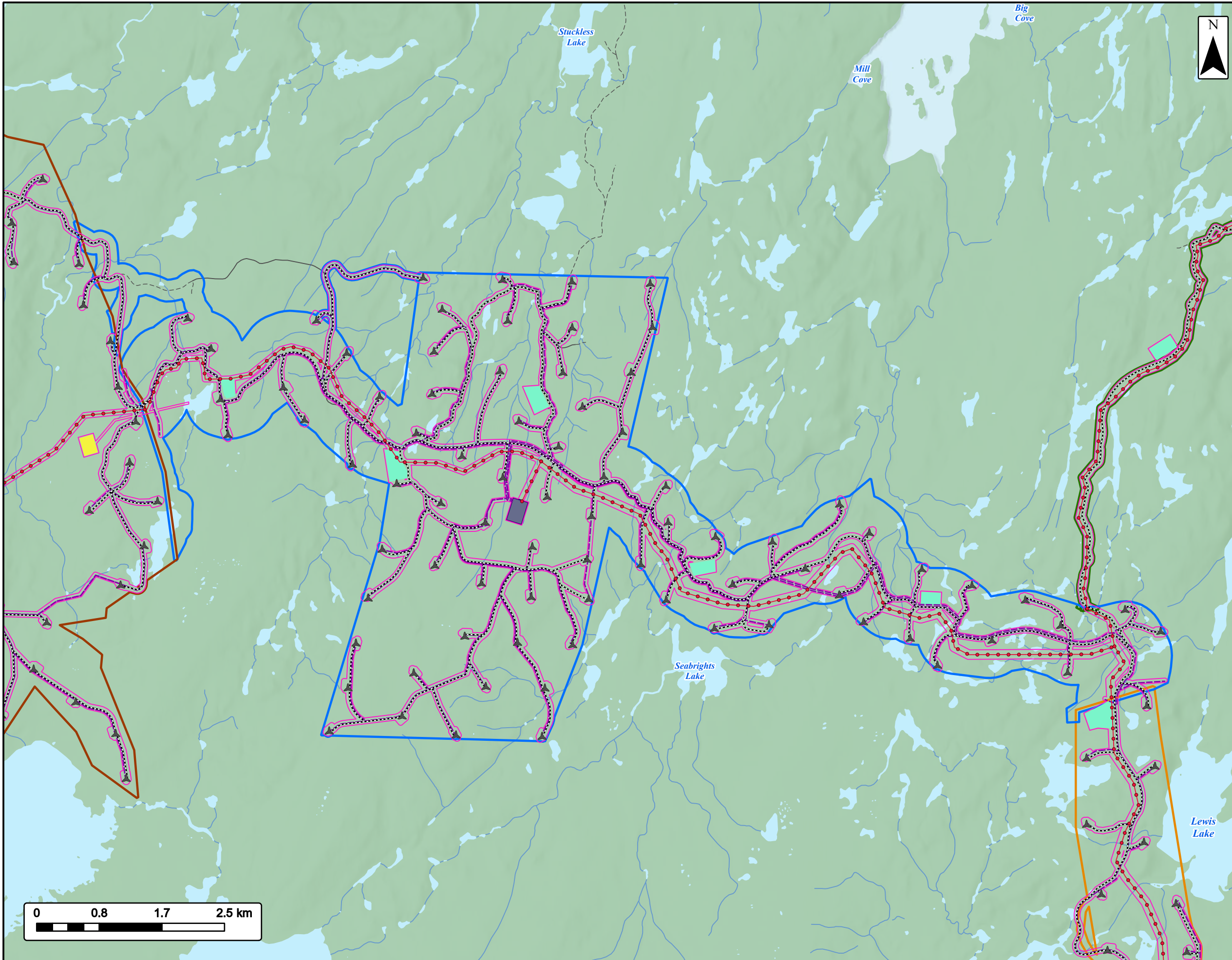


Coordinate System: NAD 1983 CSRS UTM Zone 21N
Sources: Esri, NASA, NGA, USGS, GeoNOVA, SNSIS, NSNRR, ACCDC, IBA Canada, CNWI, HERE, Garmin, USGS



Date:	2026-03-30	Project #:	24-10265
Scale:	1:95,000	Drawing #:	6.1-2B
Drawn By:	M. Partridge		
Checked By:	N. Thomas		



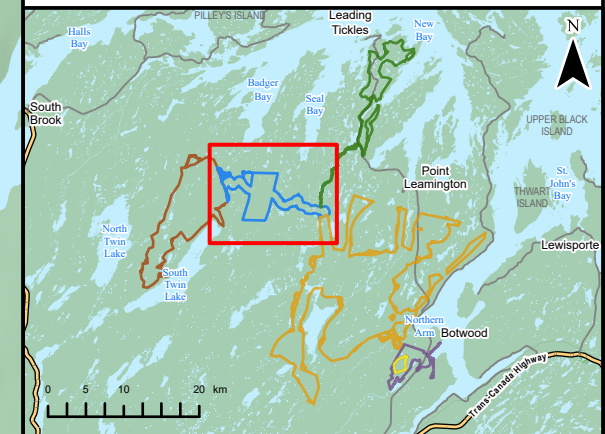


EVREC Green Energy Hub

Project Infrastructure
Seabrights Lake Wind Project Area



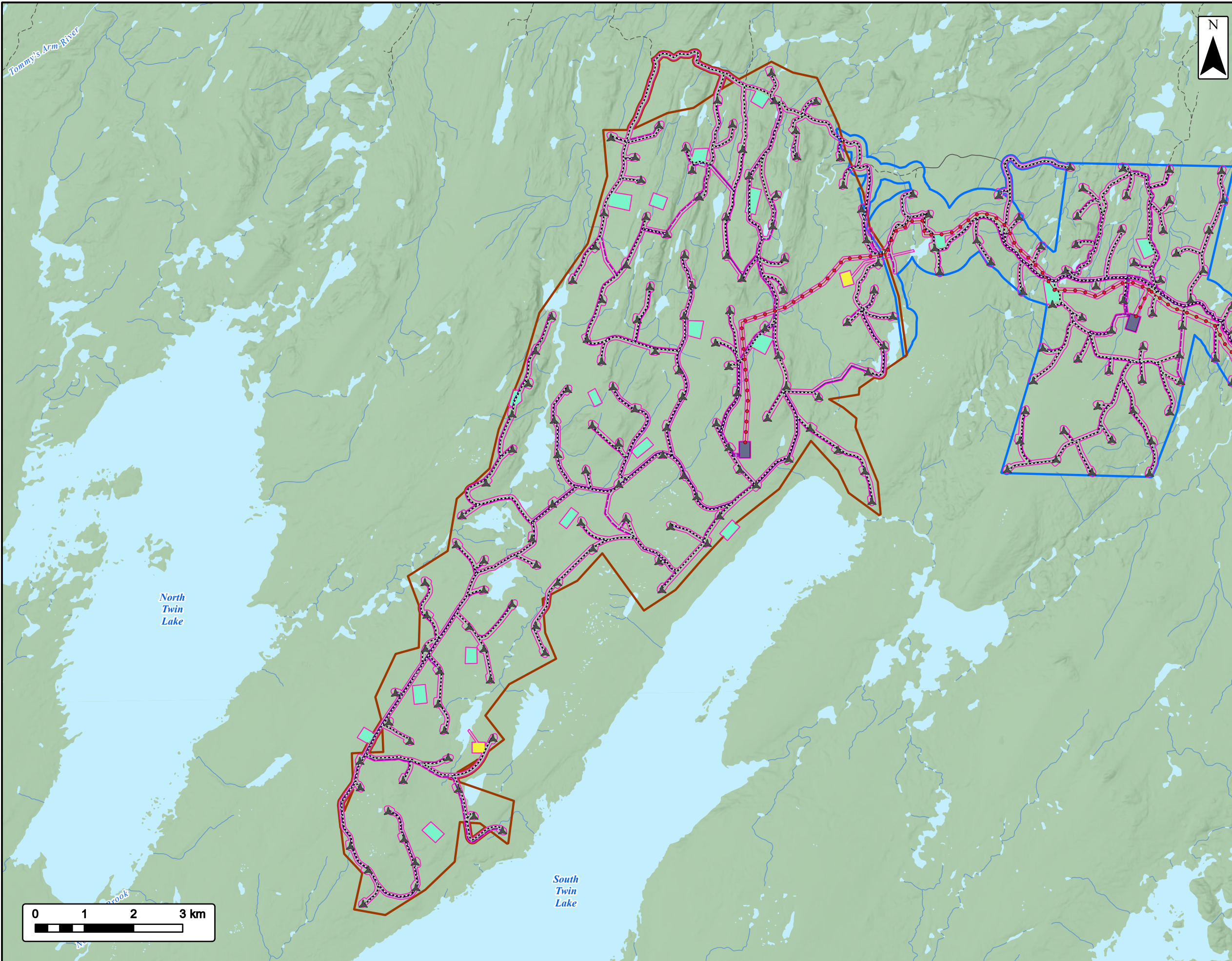
Project Area	Transportation	Water Features
Botwood Wind Project Area	Road	Mapped Watercourses
Leading Ticksles Wind Project Area	Unpaved Road	Mapped Waterbodies
Seabrights Lake Wind Project Area		
Twin Lakes Wind Project Area		
Project Footprint		
Accommodation		
Quarry		
Substation		
230 kV Transmission Line		
69 kV Collector Line		
Project Road		
Turbine		



Coordinate System: NAD 1983 CSRS UTM Zone 21N
Sources: Esri, NASA, NGA, USGS, GeoNOVA, SNSIS, NSNRR, ACCDC, IBA Canada, CNWI, HERE, Garmin, USGS

Date:	2026-03-30	Project #:	24-10265
Scale:	1:50,000	Drawing #:	6.1-2C
Drawn By:	M. Partridge		
Checked By:	N. Thomas		



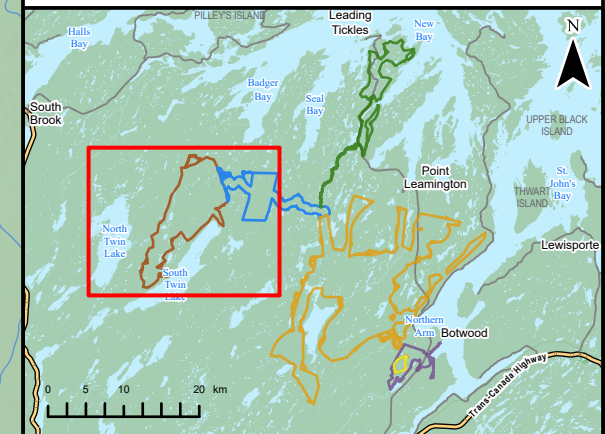


EVREC Green Energy Hub

Project Infrastructure
Twin Lakes Wind Project Area

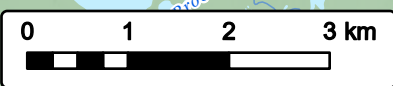


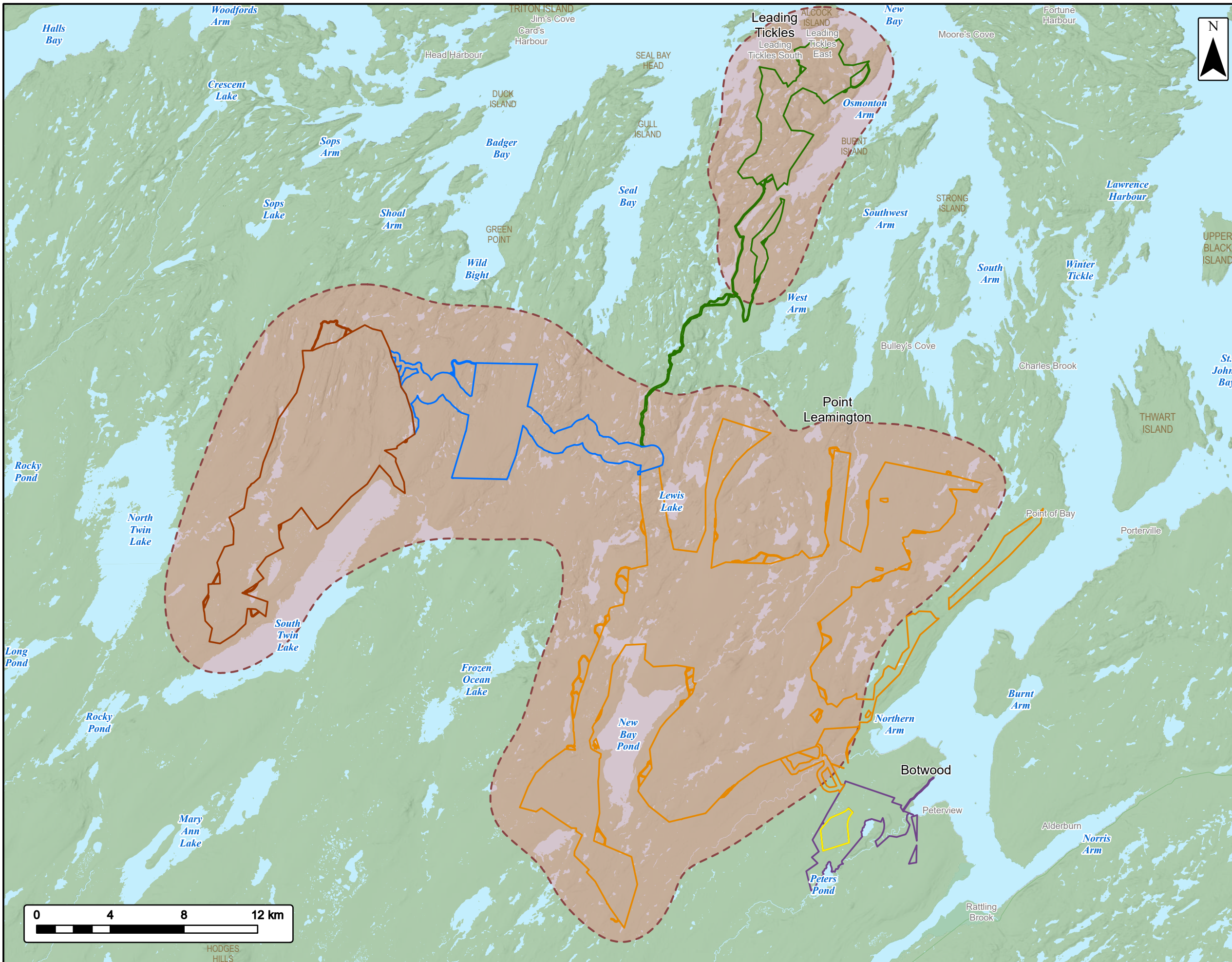
Project Area	Transportation	Water Features
Seabrights Lake Wind Project Area	Road	Mapped Watercourses
Twin Lakes Wind Project Area	Unpaved Road	Mapped Waterbodies
Project Footprint		
Accommodation		
Quarry		
Substation		
230 kV Transmission Line		
69 kV Collector Line		
Project Road		
Turbine		



Coordinate System: NAD 1983 CSRS UTM Zone 21N
Sources: Esri, NASA, NGA, USGS, GeoNOVA, SNSIS, NSNRR, ACCDC, IBA Canada, CNWI, HERE, Garmin, USGS

Date:	2026-03-30	Project #:	24-10265
Scale:	1:75,000	Drawing #:	6.1-2D
Drawn By:	M. Partridge		
Checked By:	N. Thomas		





EVREC Green Energy Hub
Noise Spatial Boundary - Wind Project Area



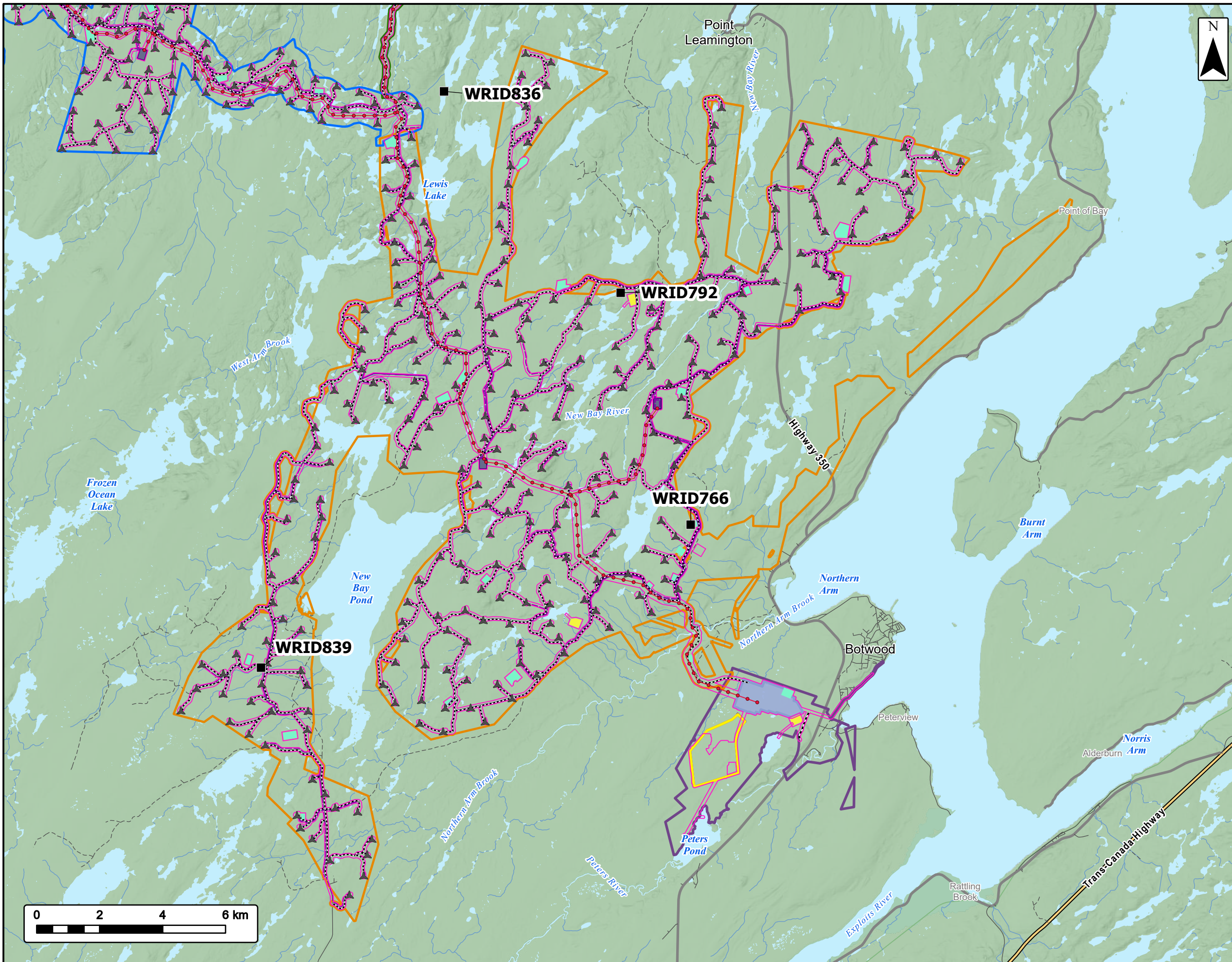
- Project Area**
- Industrial Project Area
 - Solar Project Area
 - Botwood Wind Project Area
 - Leading Ticks Wind Project Area
 - Seabrights Lake Wind Project Area
 - Twin Lakes Wind Project Area
 - Local Study Area
- Water Features**
- Mapped Waterbodies



Coordinate System: NAD 1983 CSRS UTM Zone 21N
Sources: Esri, NASA, NGA, USGS, GeoNOVA, SNSIS, NSNRR, ACCDC, IBA Canada, CNWI, HERE, Garmin, USGS

Date: 2026-03-28	Project #: 24-10265
Scale: 1:200,000	6.4-1
Drawn By: B. Spencer	
Checked By: L. Pominville	



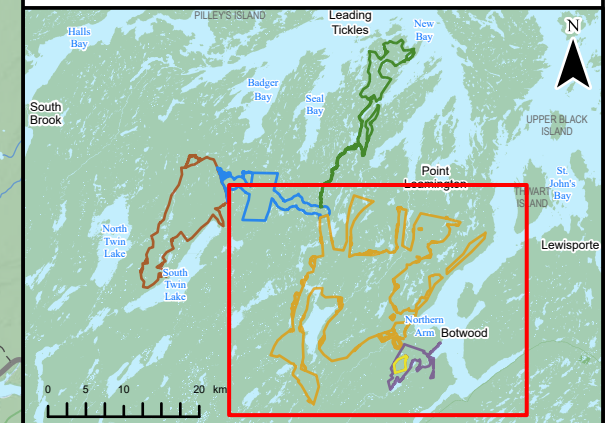


EVREC Green Energy Hub

Construction Noise - Wind Project Area
Botwood Wind Project Area



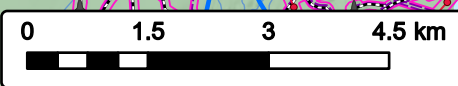
Project Area	Transportation	Water Features
Industrial Project Area	Trans-Canada Highway	Mapped Watercourses
Solar Project Area	Highway	Mapped Waterbodies
Botwood Wind Project Area	Road	
Leading Ticks Wind Project Area	Unpaved Road	
Seabrights Lake Wind Project Area		
Project Footprint		
Receptors - Point		
Remote		
Project Infrastructure		
Industrial Facility Infrastructure Area		
Accommodation		
Quarry		
Substation		
230 kV Transmission Line		
69 kV Collector Line		
Project Road		
Turbine		



Coordinate System: NAD 1983 CSRS UTM Zone 21N
Sources: Esri, NASA, NGA, USGS, GeoNOVA, SNSIS, NSNRR, ACCDC, IBA Canada, CNWI, HERE, Garmin, USGS

Date: 2026-03-30	Project #: 24-10265
Scale: 1:117,000	Drawing #: 6.4-2A
Drawn By: B. Spencer	
Checked By: L. Pominville	



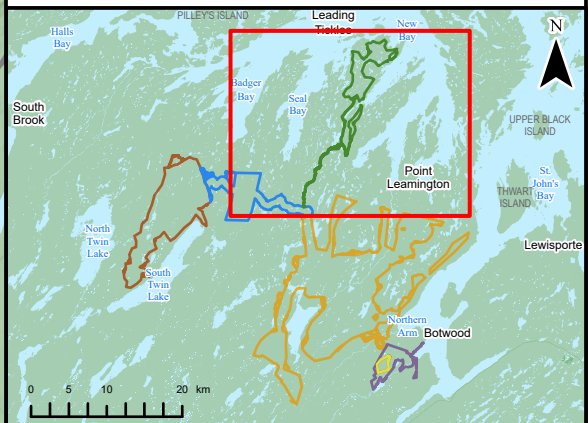


EVREC Green Energy Hub

Construction Noise - Wind Project Area
Leading Tickle Wind Project Area



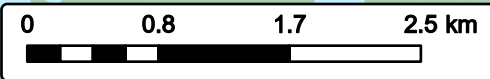
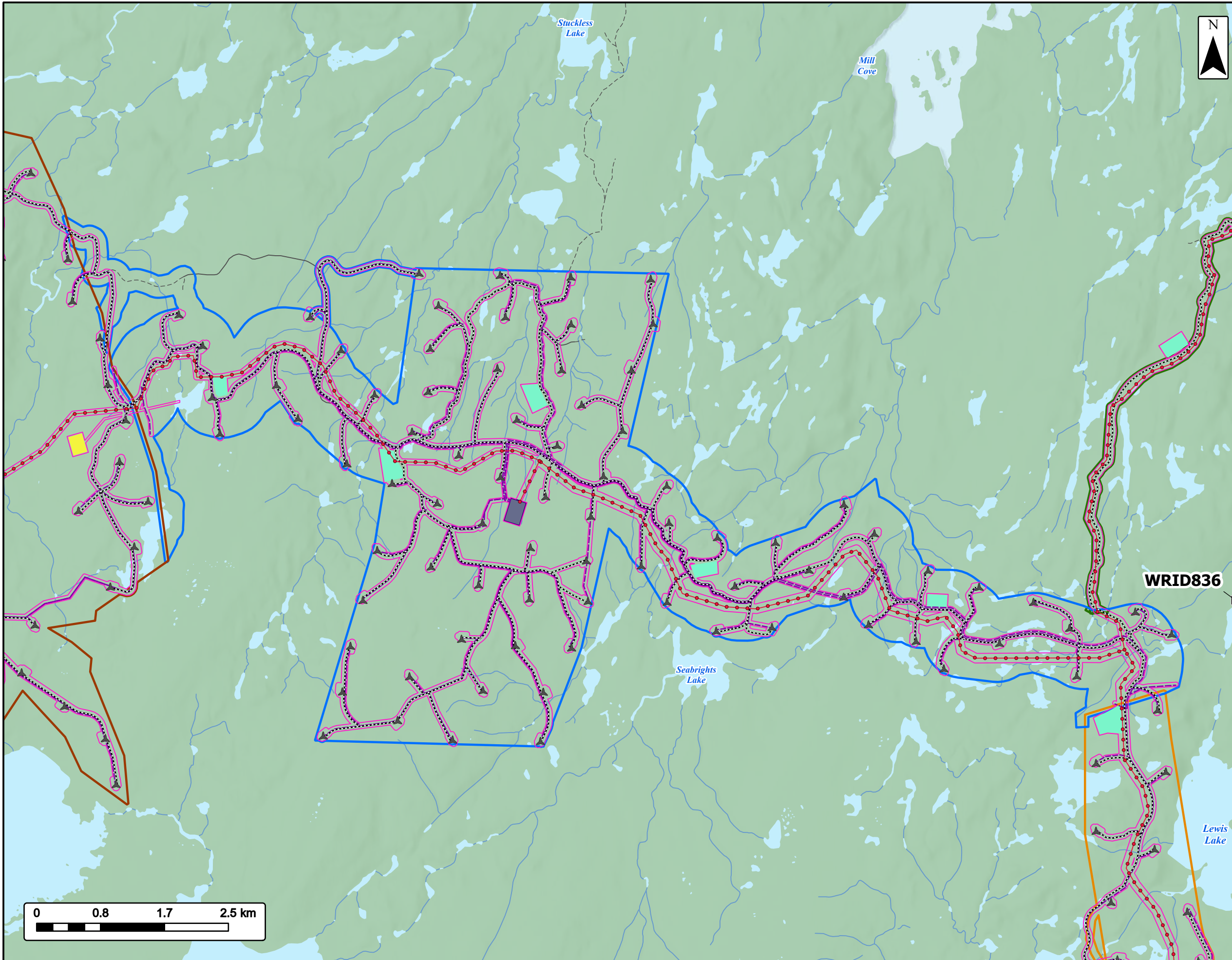
Project Area	Transportation	Water Features
Botwood Wind Project Area	Highway	Mapped Watercourses
Leading Tickle Wind Project Area	Road	Mapped Waterbodies
Seabrights Lake Wind Project Area	Unpaved Road	
Project Footprint		
Remote Receptor		
Quarry		
Substation		
230 kV Transmission Line		
69 kV Collector Line		
Project Road		
Turbine		



Coordinate System: NAD 1983 CSRS UTM Zone 21N
Sources: Esri, NASA, NGA, USGS, GeoNOVA, SNSIS, NSNRR, ACCDC, IBA Canada, CNWI, HERE, Garmin, USGS

Date: 2026-03-30	Project #: 24-10265
Scale: 1:94,000	Drawing #: 6.4-2B
Drawn By: B. Spencer	
Checked By: L. Pomerville	



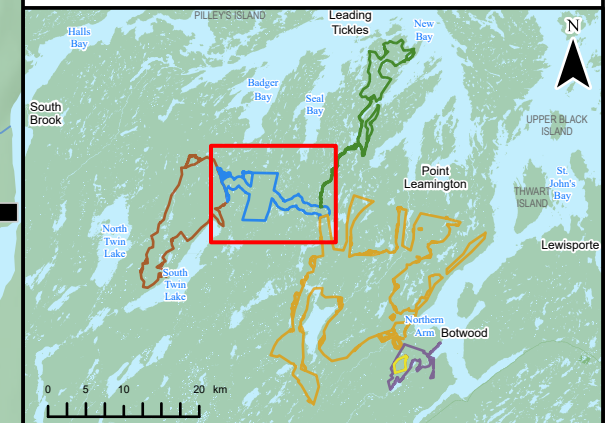


EVREC Green Energy Hub

Construction Noise - Wind Project Area
Seabrights Lake Wind Project Area



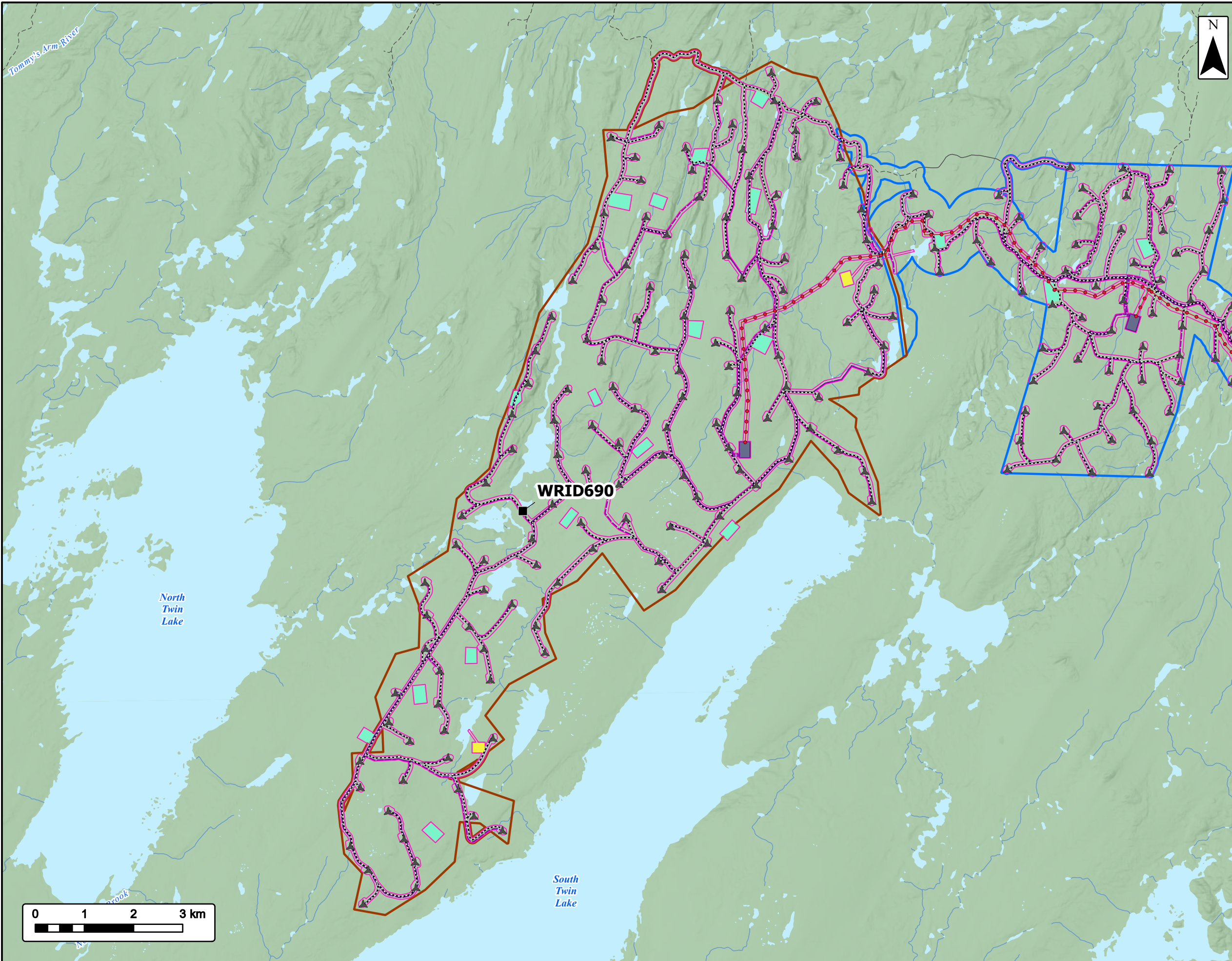
Project Area	Transportation	Water Features
Botwood Wind Project Area	Road	Mapped Watercourses
Leading Ticks Wind Project Area	Unpaved Road	Mapped Waterbodies
Seabrights Lake Wind Project Area		
Twin Lakes Wind Project Area		
Project Footprint		
Receptors - Point		
Remote		
Project Infrastructure		
Accommodation		
Quarry		
Substation		
230 kV Transmission Line		
69 kV Collector Line		
Project Road		
Turbine		



Coordinate System: NAD 1983 CSRS UTM Zone 21N
Sources: Esri, NASA, NGA, USGS, GeoNOVA, SNSIS, NSNRR, ACCDC, IBA Canada, CNWI, HERE, Garmin, USGS

Date:	2026-03-30	Project #:	24-10265
Scale:	1:49,000	Drawing #:	6.4-2C
Drawn By:	B. Spencer		
Checked By:	L. Pominville		



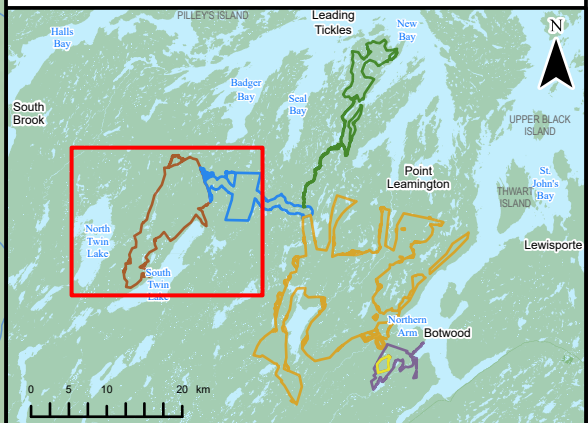


EVREC Green Energy Hub

Construction Noise - Wind Project Area
Twin Lakes Wind Project Area

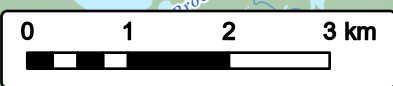


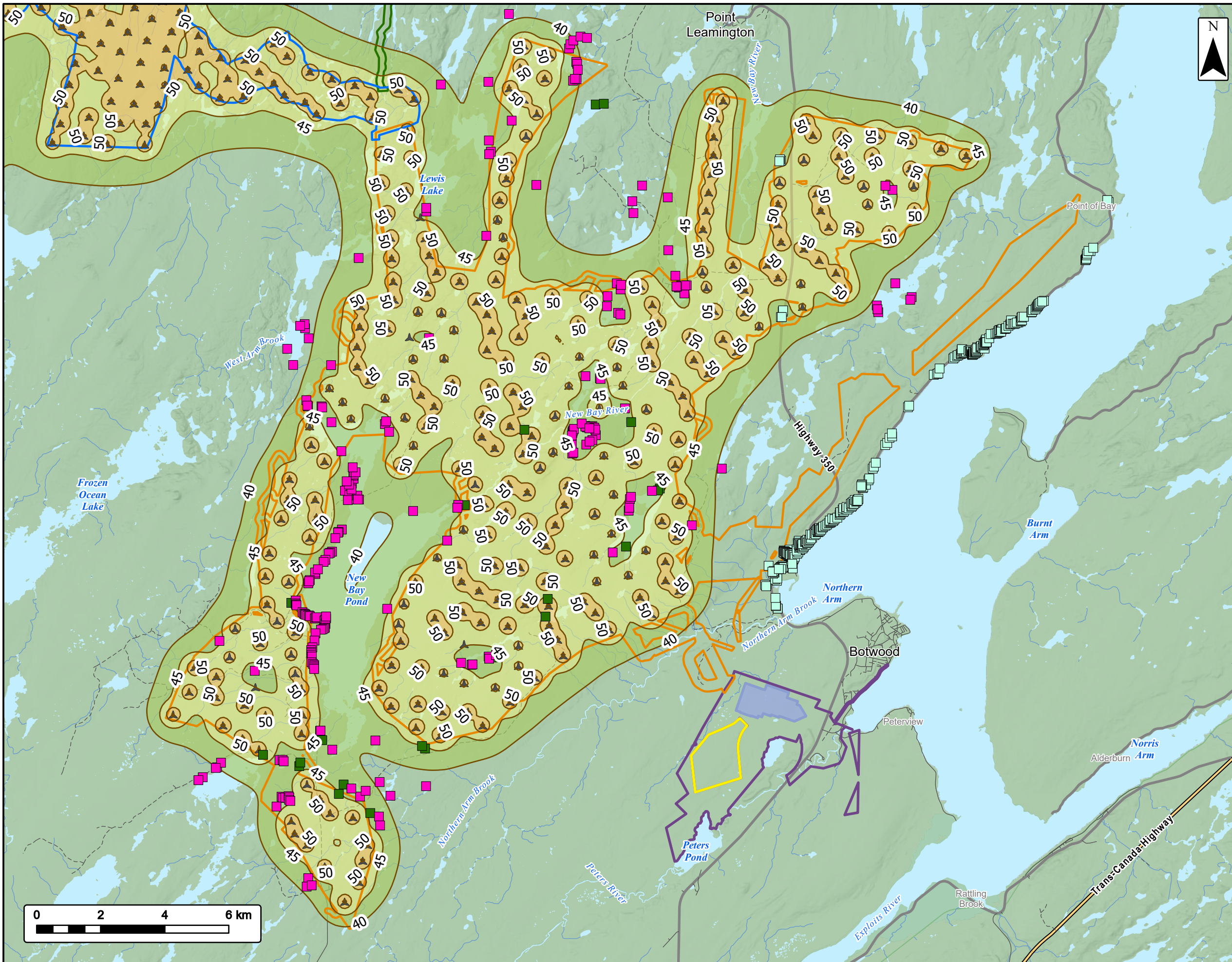
Project Area		Transportation	
Seabrights Lake Wind Project Area		Road	
Twin Lakes Wind Project Area		Unpaved Road	
Project Footprint		Water Features	
		Mapped Watercourses	
		Mapped Waterbodies	
Receptors - Point			
Remote			
Project Infrastructure			
Accommodation			
Quarry			
Substation			
230 kV Transmission Line			
69 kV Collector Line			
Project Road			
Turbine			



Coordinate System: NAD 1983 CSRS UTM Zone 21N
Sources: Esri, NASA, NGA, USGS, GeoNOVA, SNSIS, NSNRR, ACCDC, IBA Canada, CNWI, HERE, Garmin, USGS

Date:	2026-03-30	Project #:	24-10265
Scale:	1:75,000	Drawing #:	6.4-2D
Drawn By:	B. Spencer		
Checked By:	L. Pominville		



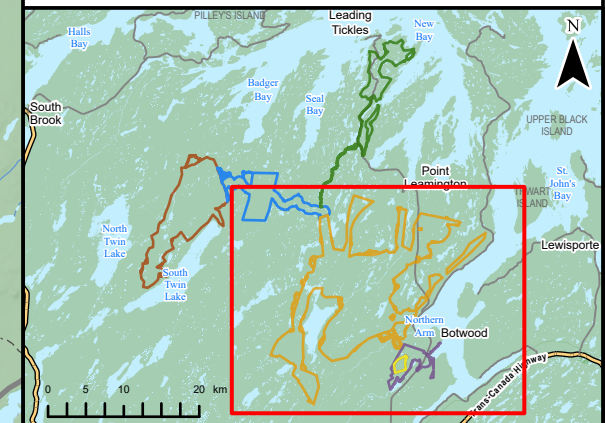


EVREC Green Energy Hub

Operational Noise Monitoring of WTGs (Mitigated)
Botwood Wind Project Area



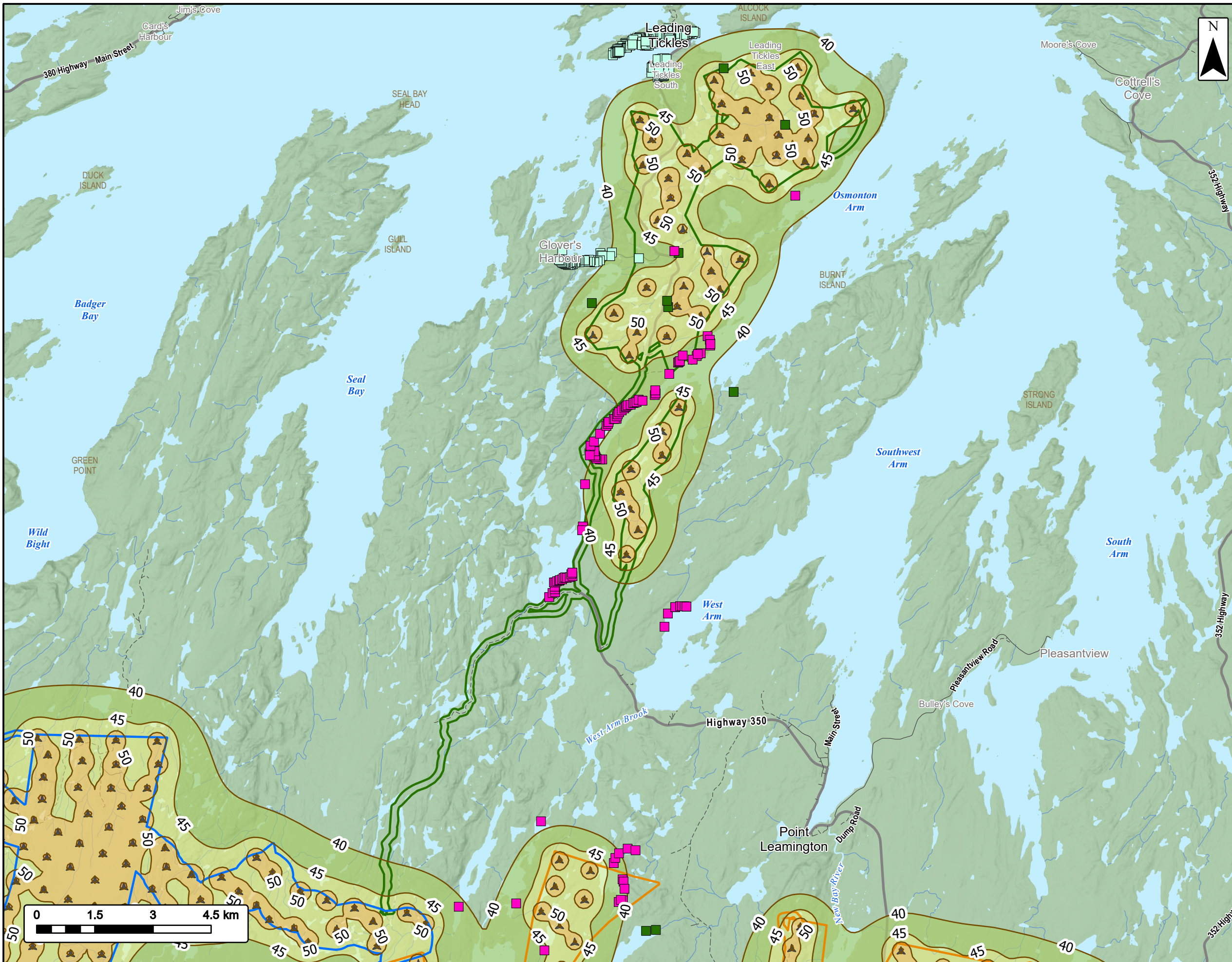
Project Area	Receptor
Industrial Project Area	No Crown Title
Solar Project Area	Remote
Botwood Wind Project Area	Residential
Leading Ticks Wind Project Area	
Seabrights Lake Wind Project Area	
Industrial Facility Infrastructure Area	
Turbine	
Modelled Noise Contours (dBA)	Transportation
40 - 45	Trans-Canada Highway
45 - 50	Highway
50 - 55	Road
55+	Unpaved Road
Noise Isoleth	
	Water Features
	Mapped Watercourses
	Mapped Waterbodies



Coordinate System: NAD 1983 CSRS UTM Zone 21N
Sources: Esri, NASA, NGA, USGS, GeoNOVA, SNSIS, NSNRR, ACCDC, IBA Canada, CNWI, HERE, Garmin, USGS

Date: 2026-03-30	Project #: 24-10265
Scale: 1:115,000	Drawing #: 6.4-3A
Drawn By: B. Spencer	
Checked By: L. Pominville	



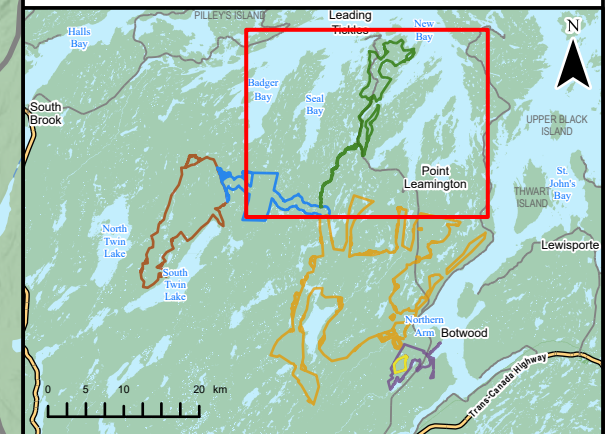


EVREC Green Energy Hub

Operational Noise Monitoring of WTGs (Mitigated)
Leading Ticksles Wind Project Area



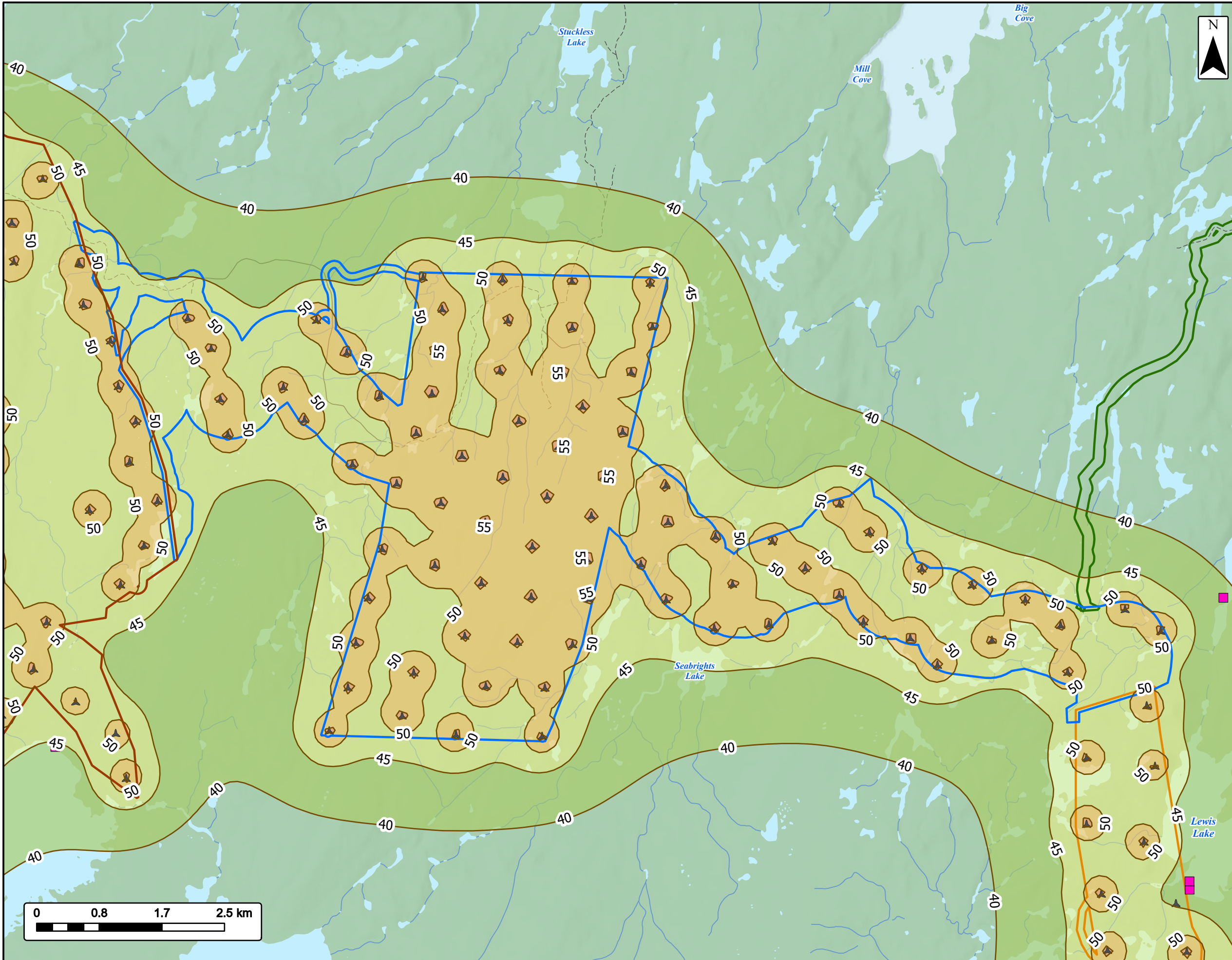
Project Area	Receptor	Transportation	Water Features
Botwood Wind Project Area	No Crown Title	Highway	Mapped Watercourses
Leading Ticksles Wind Project Area	Remote	Road	Mapped Waterbodies
Seabrights Lake Wind Project Area	Residential	Unpaved Road	
Turbine			
Modelled Noise Contours (dBA)			
40 - 45			
45 - 50			
50 - 55			
55+			
Noise Isopleth			



Coordinate System: NAD 1983 CSRS UTM Zone 21N
Sources: Esri, NASA, NGA, USGS, GeoNOVA, SNSIS, NSNRR, ACCDC, IBA Canada, CNWI, HERE, Garmin, USGS

Date: 2026-03-30	Project #: 24-10265
Scale: 1:95,000	Drawing #: 6.4-3B
Drawn By: B. Spencer	
Checked By: L. Pominville	



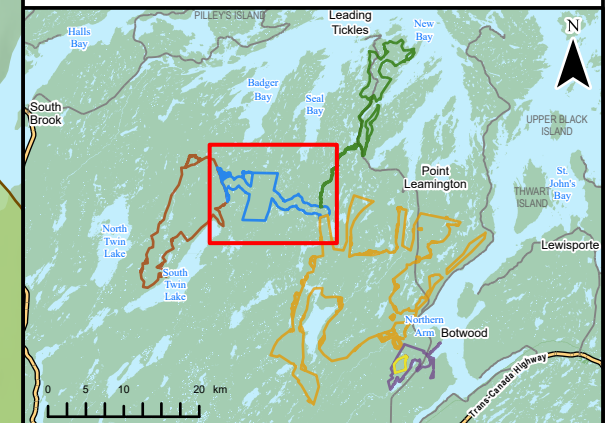


EVREC Green Energy Hub

Operational Noise Monitoring of WTGs (Mitigated)
Seabrights Lake Wind Project Area



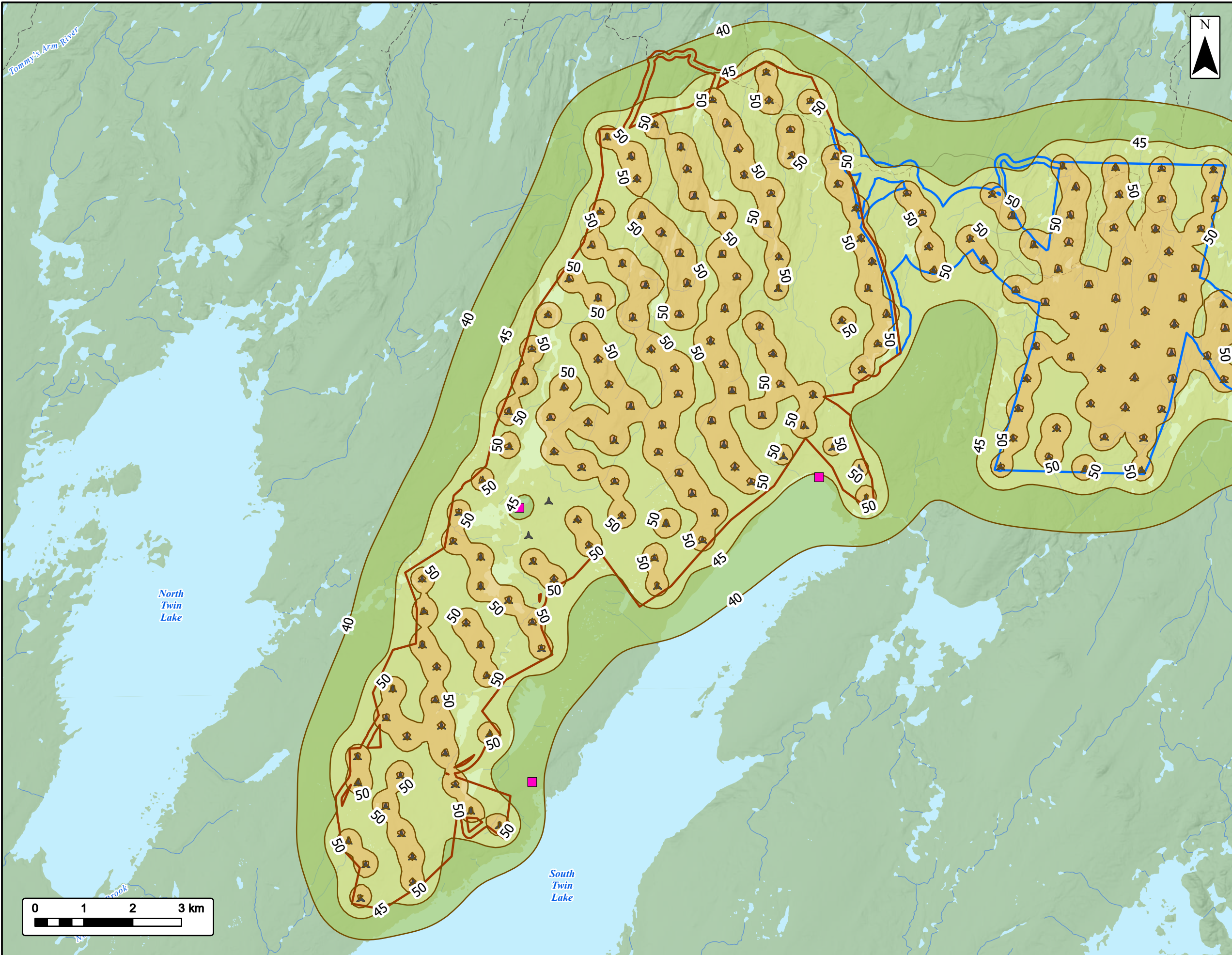
Project Area	Receptor
Botwood Wind Project Area	Remote
Leading Ticks Wind Project Area	Transportation
Seabrights Lake Wind Project Area	Road
Twin Lakes Wind Project Area	Unpaved Road
Turbine	Water Features
	Mapped Watercourses
	Mapped Waterbodies
Modelled Noise Contours (dBA)	
40 - 45	
45 - 50	
50 - 55	
55+	
Noise Isoleth	



Coordinate System: NAD 1983 CSRS UTM Zone 21N
Sources: Esri, NASA, NGA, USGS, GeoNOVA, SNSIS, NSNRR, ACCDC, IBA Canada, CNWI, HERE, Garmin, USGS

Date:	2026-03-30	Project #:	24-10265
Scale:	1:50,000	Drawing #:	6.4-3C
Drawn By:	B. Spencer		
Checked By:	L. Pomerville		



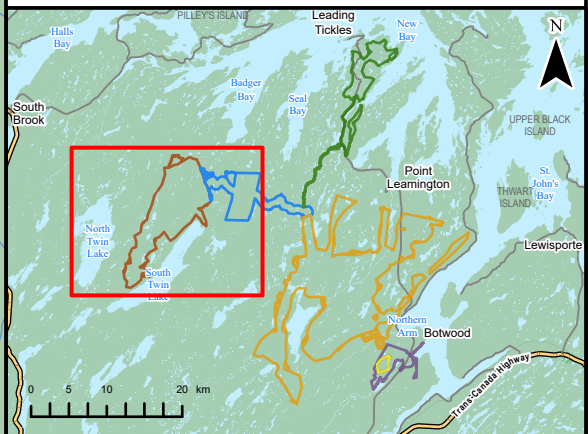


EVREC Green Energy Hub

Operational Noise Monitoring of WTGs (Mitigated)
Twin Lakes Wind Project Area



Project Area	Seabrights Lake Wind Project Area	Receptor	Remote
	Twin Lakes Wind Project Area	Transportation	Road
	Turbine		Unpaved Road
Modelled Noise Contours (dBA)	40 - 45	Water Features	Mapped Watercourses
	45 - 50		Mapped Waterbodies
	50 - 55		
	55+		
Noise Isoleth			



Coordinate System: NAD 1983 CSRS UTM Zone 21N
Sources: Esri, NASA, NGA, USGS, GeoNOVA, SNSIS, NSNRR, ACCDC, IBA Canada, CNWI, HERE, Garmin, USGS

Date:	2026-03-30	Project #:	24-10265
Scale:	1:75,000	Drawing #:	6.4-3D
Drawn By:	B. Spencer		
Checked By:	L. Pominville		

