

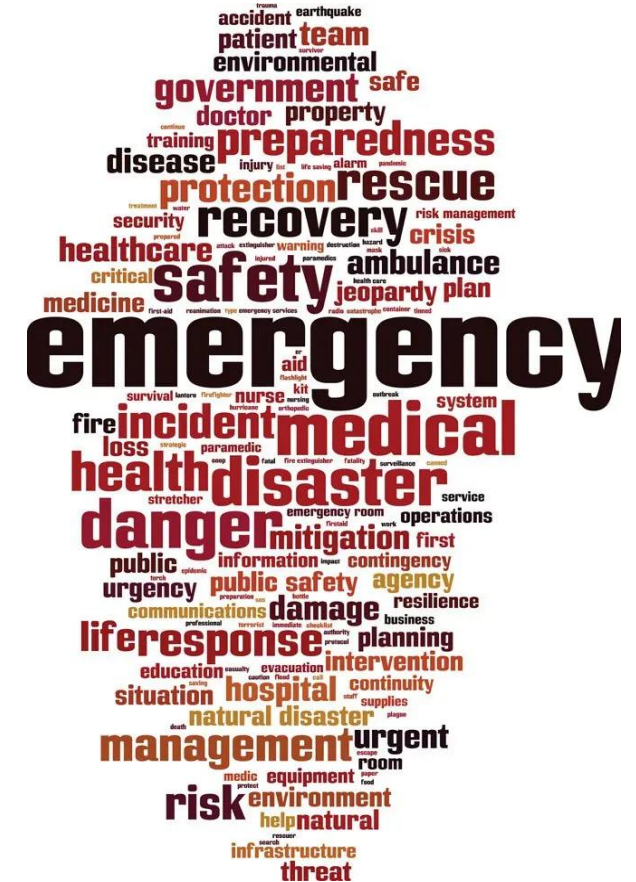
Emergency Management in NL

Rob Pinksen

Manager of Plans and Operations
Emergency Services Division

Emergency Management

- There is no role more fundamental for all levels of governance than preserving the safety and security of their residents
- Save lives, preserve the environment, protect property, infrastructure and the economy
- 4 Pillars:
 - Prevention and Mitigation
 - Preparedness
 - Response
 - Recovery



Emergency Management Framework



SHARED RESPONSIBILITY INCLUDING ALL LEVELS OF GOVERNMENT, EM PARTNERS AND CITIZENS



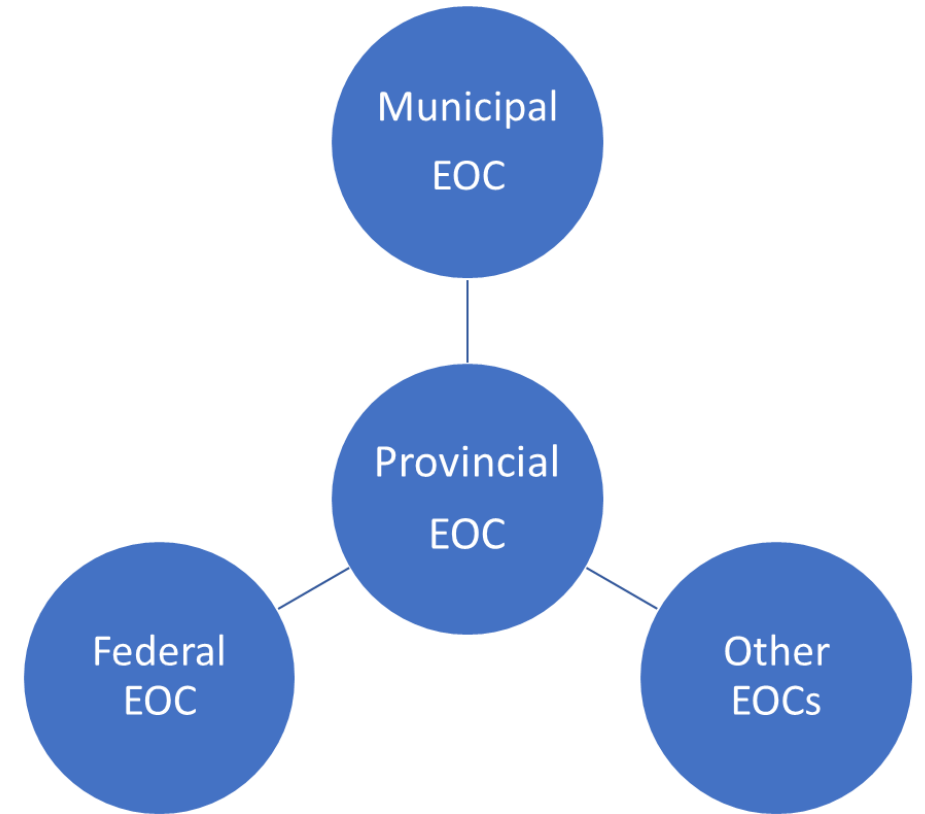
MOST DISASTERS OCCUR AT THE LOCAL LEVEL AND FIRST RESPONSE IS MANAGED BY LOCAL AUTHORITIES



DISASTERS THAT EXCEED THE CAPABILITIES OF LOCAL AUTHORITIES MAY REQUIRE THE ASSISTANCE OF THE PROVINCIAL GOVERNMENT

Emergency Management Framework

- Coordinated approach
 - Industry
 - Municipalities
 - Provincial Government
 - Emergency Management Partners
 - Police
 - Ground Search and Rescue
 - NL Health Services
 - Canadian Red Cross
 - Team Rubicon
 - *Many others*
 - Federal Government



Provincial Emergency Services

The ***Emergency Services Act*** mandates the Emergency Services Division to develop and maintain an emergency management system to mitigate against, prepare for, respond to, and recover from all-hazards emergencies in the province.



Emergency Services Division Responsibilities

- Overall provincial emergency management program
- Coordinate province-wide, multi-agency and multi-jurisdictional responses to emergency events via the Provincial Emergency Operations Centre
- Develop/maintain an emergency management training & exercise program
- Provide on-call emergency services 24/7
- Administer the NL Disaster Financial Assistance Program (NL-DFAP)
- Strategic oversight of Ground Search and Rescue
- Public Alerting

Our Team

- Executive Management
- Director of Emergency Services
- Manager of Plans and Operations
 - **Regional Emergency Planners**
 - Policy Analyst
- Manager of Disaster Financial Assistance Program
 - DFAA Auditor
 - Administration Officer



Our Locations



- St. John's
 - HQ and Provincial Emergency Operations Centre
- Grand Falls-Windsor
- Deer Lake (Alternate PEOC)
- Happy Valley-Goose Bay

Provincial Emergency Operations Centre (PEOC)

- Coordinates response to significant emergency events
- Representatives from all response partners
 - Emergency Services Staff
 - Provincial Government
 - Federal Government
 - NGOs
 - Critical Infrastructure Partners
 - Technical Specialists
- Prioritizes objectives and allocates resources
- Gathers information and shares with stakeholders
- Coordinates communications, operations, financial assistance, etc.
- Activation Levels



Seasonal Risks

Winter:

Time period: December – March

Events: Winter storms, blizzards, freezing rain

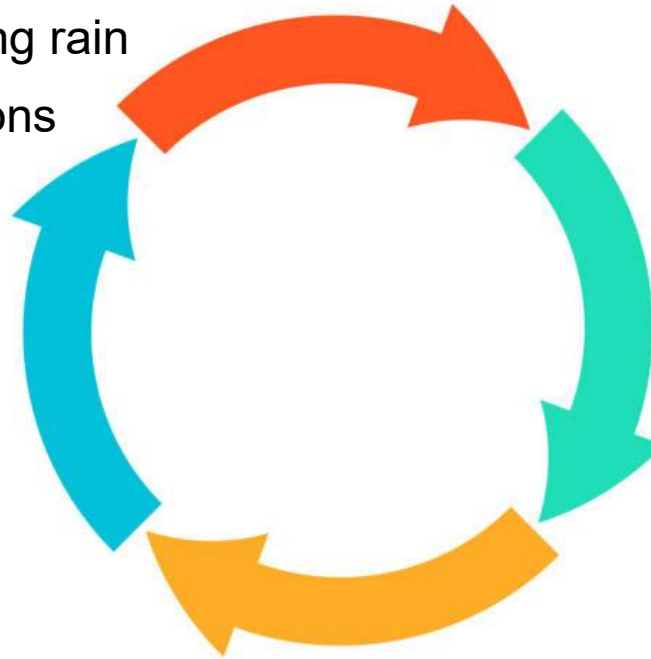
Impacts: Power outages, travel disruptions

Fall:

Time period: September - November

Events: Hurricanes, flooding

Impacts: Evacuations, property damage



Spring:

Time period: April – May

Events: Flooding, Grass fires

Impacts: Property damage

Summer:

Time period: June – August

Events: Wildfires

Impacts: Evacuations, property damage

Impacts on Communities/Public Works

Wildfires

- Wastewater impacts (fire retardant - AFFF foam)
- Water supply – using water supply for fire suppression
- Dead trees/cleanup
- Property damage/municipal infrastructure

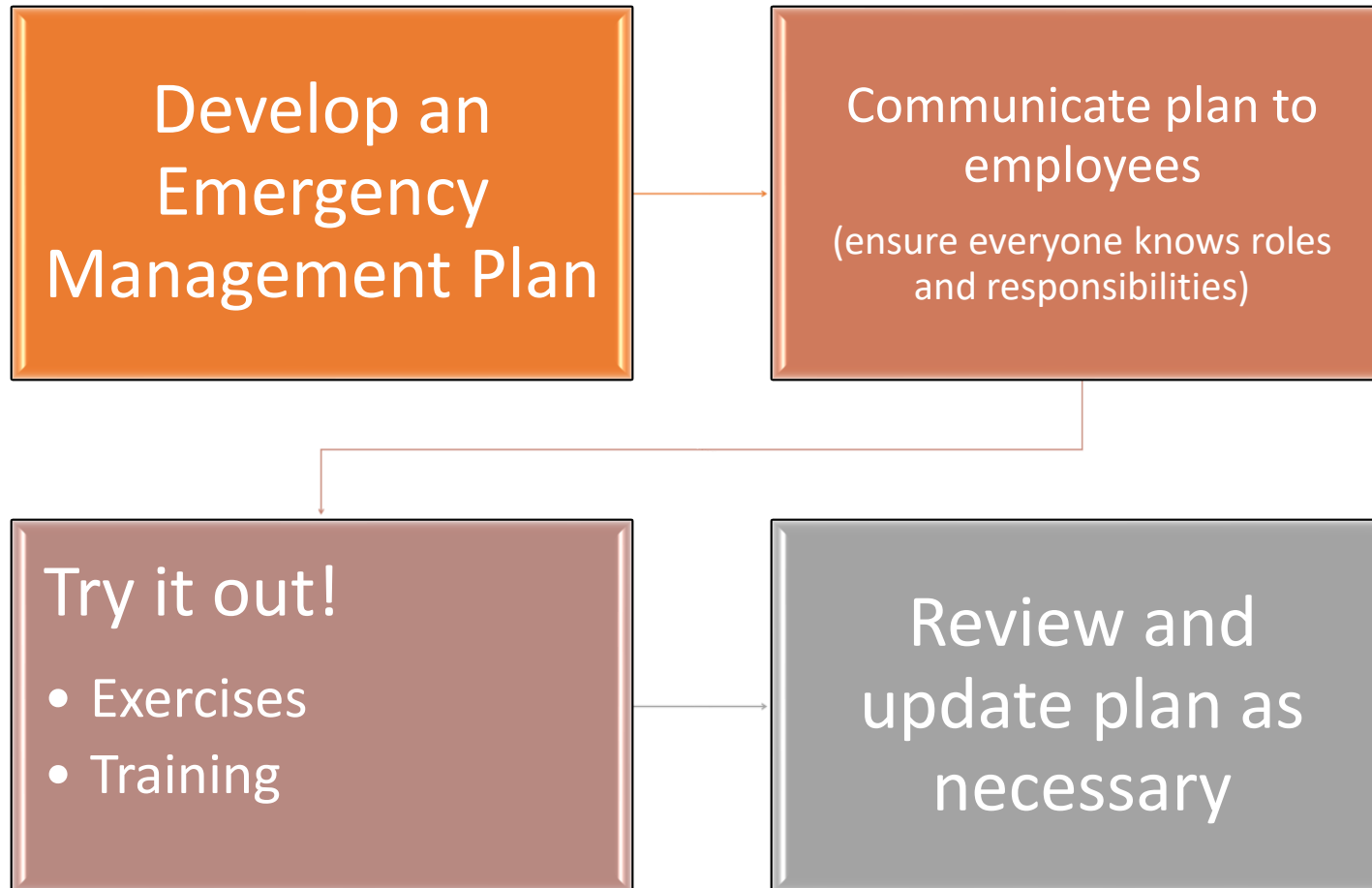
Hurricanes/Flooding

- Municipal water systems (stormwater drainage, well flooding, water treatment systems)
- Roadways and bridges (damage, erosion, structural degradation)
- Isolate sections or entire community
- Property damage (wind or water)
- Sewage/wastewater capacity (public health)
- Power outages

How to Mitigate Impacts

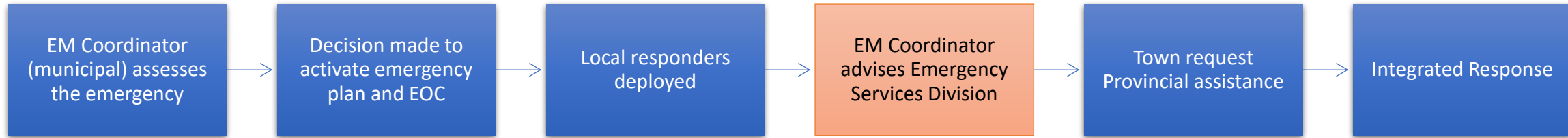
- Planning
 - Hazard/Risk Assessment
 - Emergency Management Plan
 - Flood risk mapping
- Regular inspections and maintenance (stormwater systems, loose objects)
- Building climate-resilient systems
- Backup power and communications (generators, Starlink)
- Bottled water supply
- Monitor local weather events (ECCC, PEOC emails)

Planning Processes for Communities

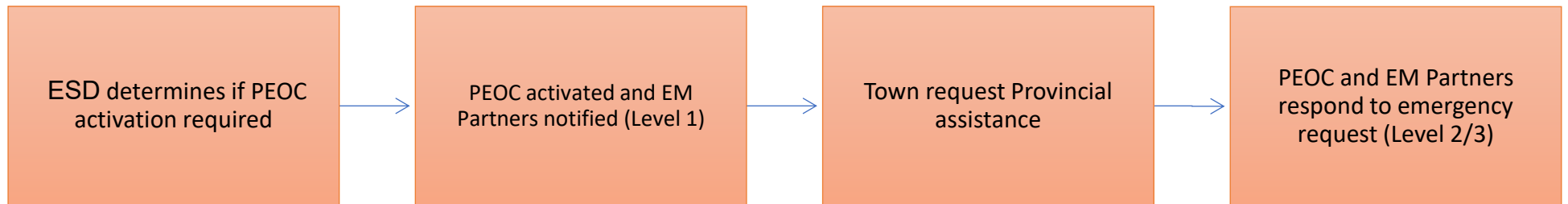


Emergency Response Process

Local



Provincial



Post-Event Recovery

- Damage assessment
- Water testing
 - Boil Water Advisory vs Non-Consumption Advisory
 - Water Resource Management Division – test chemical/physical parameters
 - Government Services
 - Bacteriological testing (2 tests, 2 days)
 - Issue BWA, NCA to town (town must inform residents)
- After-action review
- Review emergency management plan for enhancements

Recent Events (2025)

Avalon Wildfires

- CBN/“Kingston”, Holyrood, Paddy’s Pond
- PEOC activated to Level 3 – Full Activation

Other wildfires

- Small Point-Adam's Cove-Blackhead-Broad Cove, Chance Harbour, Musgrave Harbour, Badger, Martin Lake
- PEOC activated to Level 2 – Partial Activation



Recent Events (2025)

Churchill Falls Wildfire

- PEOC activated to Level 1 – Enhanced Monitoring



Recent Events (2024)

Labrador City Evacuation

- ~ 9,000 people evacuated
- PEOC activated to a Level 3 – Full Activation
- Response phase July 12 – July 26 (2 weeks)

Churchill Falls Evacuation

- ~ 750 people evacuated
- PEOC activated to a Level 2 – Partial Activation
- Response phase June 20 – July 4 (2 weeks)



Recent Events (2022)



Central Fire Complex

- Largest forest fires in Newfoundland in recent history (22,647 total hectares burned)
- Provincial Emergency Operations Center activated to a Level 3 – Full Activation
- Regional State of Emergency declared by the Minister of JPS

Recent Events (2022)

Hurricane Fiona

- Storm surge and record high water level resulted in widespread infrastructure damages and coastal erosion.
- Provincial Emergency Operations Center activated to a Level 2 – Partial Activation.
- State of Emergency declared in Channel-Port aux Basques and Burnt Islands.



Other Notable Events

- Southwest Coast Rainstorm (2021)
- Hurricane Larry (2021)
- Eastern Newfoundland Blizzard (2020)
- West Coast Flood (2018)
- Mud Lake Flood (2017)
- Thanksgiving Rainstorm (2016)
- Hurricane Igor (2010)



Future Priorities

- Municipal Planning



- Training



- Exercising



Q & A

Thank-You for your time and interest!

