

2. Demographic Profile of Respondents

2.1 Gender and Age

As shown in Table 2.1, of respondents from the Statistics Canada and Youth Services and Post-Secondary Education surveys conducted in 2000-2001, 56% were female while 44% were male. When these results are compared to the original 1995 graduates, the ratio of females to males is similar for all sectors. In general, there are more females than males who graduated from private college one-year and two-year programs, and Memorial University undergraduate and master's programs. In contrast, more males than females graduated from public college one-year programs, while the numbers of males and females are from the public college two- and three-year programs are comparable.

**Table 2.1 Percentage of Graduates of 1995 (n=6900)
and Respondents of 2000-2001 (n=2230)**

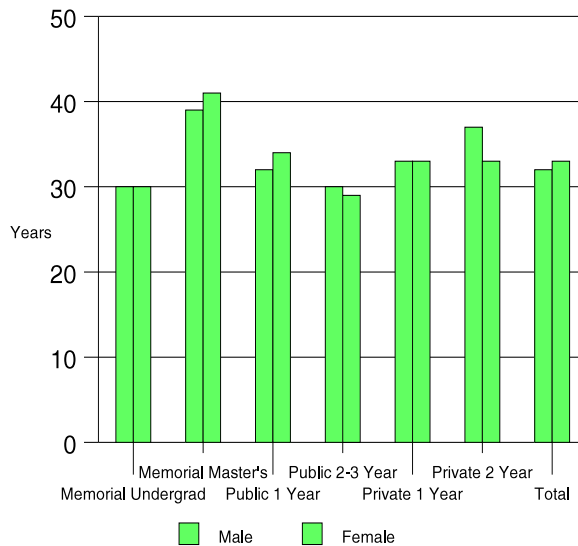
		Graduates 1995	Respondents 2000-2001
		%	
Memorial Undergraduate	Female	58	58
	Male	42	42
Memorial Master's	Female	56	58
	Male	44	42
Public College 1 Year	Female	34	45
	Male	66	55
Public College 2-3 Year	Female	48	50
	Male	52	50
Private College 1 Year	Female	65	66
	Male	35	34
Private College 2 Year	Female	70	77
	Male	30	23
Total		54	56

Fast-Forward: 5-Year Post-Secondary Graduate Follow-Up Study

Male	46	44
------	----	----

As of December 31, 2000, the average age of female respondents was 33 while the average age of male respondents was 32 (Figure 2.1). Graduates from Memorial University master's program reported the highest average ages with 41 years for female respondents and 39 years for male respondents. Public college two- and three-year program respondents and Memorial University undergraduate respondents had similar average ages and were the youngest of the respondents.

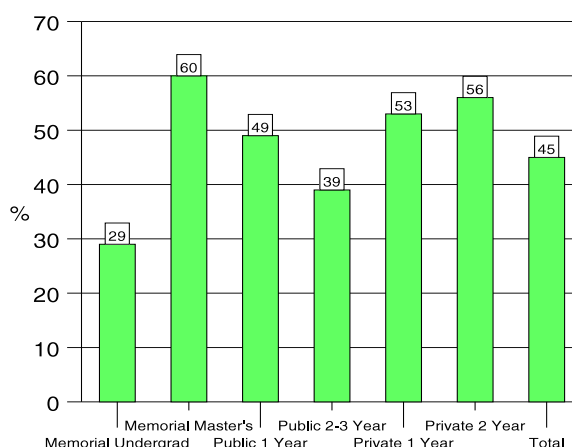
Figure 2.1 Average Age of Respondents by Sector (n=2230)



2.2 Dependent Children

As shown in Figure 2.2, 45% of respondents indicated they had at least one dependent child at the time of survey. Given the greater average age of Memorial University master's graduates, it is not surprising that the highest percentage of respondents (60%) who indicated they had at least one dependent child were from this group. The lowest reported percentage of respondents (29%) with at least one dependent child was for Memorial University undergraduates who, as noted previously, had the lowest average age.

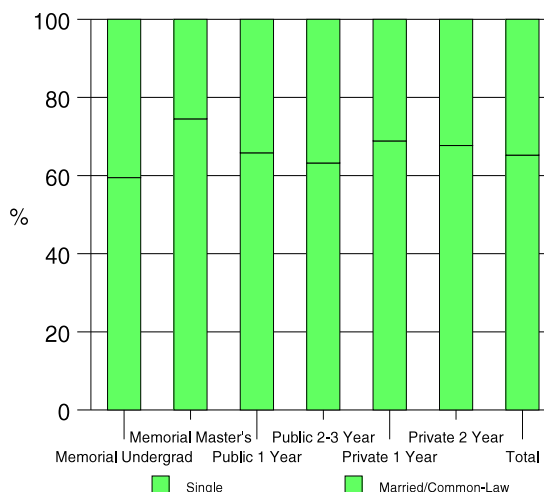
Figure 2.2 Percentage of Respondents With at Least One Dependent Child (n=2227)



2.3 Marital Status

Overall, fifty-five percent (55%) of all respondents reported they were married at the time of survey, 10% reported they were in a common-law relationship and 30% of respondents reported they were single (Figure 2.3). A small percentage reported being divorced (3%), separated (1%), or widowed (1%).

Figure 2.3 Marital Status of Respondents at Time of Survey by Sector (n=2218)



There is little difference in marital status among most institutional sectors, with the exception of Memorial University master's respondents. For this cohort, 75% reported they were married or in a common-law relationship at time of survey. This cohort also had the lowest reported percentage of single respondents (15%) and the highest of those divorced (8%).

2.4 Province of residence

Five to six years after graduation it can be expected that most of the 1995 graduates will have established roots in one place or another. As shown in Table 2.4a and 2.4b, the majority (72%) of all survey respondents resided in Newfoundland and Labrador in 2000-2001, while 28% of respondents lived out of the province. Of those living out of the province, the most popular provinces were: Ontario (10%), Alberta (8%), Nova Scotia (4%) and British Columbia (3%). For Memorial University undergraduate, Memorial University master's, and private college one-year and two-year program respondents, out-migration to Ontario was the most common. Alberta was the most common destination for public college one-year program respondents while public college two- and three-year program graduates found the provinces of Ontario and Alberta almost equally attractive.

Table 2.4a Number of Respondents Residing in Newfoundland and Labrador or Outside the Province at Time of Survey 2000-2001 by Province, United States, or Other (n=2036)

	NL	NS	PE	NB	QC	ON	MB	SK	AB	BC	YT	NT	NU	US	Other
Memorial Undergraduate	276	21	2	7	8	76	2	1	33	12	0	3	3	12	2
Memorial Masters	119	3	0	1	1	12	1	2	1	3	0	0	0	1	0
Public College 1 Year	365	27	1	7	1	40	3	3	62	21	0	1	0	5	0
Public College 2-3 Year	206	16	1	5	0	38	4	1	35	17	0	1	1	6	1
Private College 1 Year	324	6	1	2	0	20	0	0	14	2	0	0	1	1	0
Private College 2 Year	167	2	2	1	0	11	1	0	9	1	1	0	0	0	0
Total	1457	75	7	23	10	197	11	7	154	56	1	5	5	25	3

The highest reported percentages of respondents residing outside the province are Memorial University undergraduates (40%), followed closely by respondents from public college two- and three-year programs (38%) and public college one-year programs (32%) (Table 2.4b). Respondents from private college two-year (14%) and private college one-year (13%) programs report the lowest percentages of graduates residing out of the province.

Fast-Forward: 5-Year Post-Secondary Graduate Follow-Up Study

**Table 2.4b Number and Percentage of Respondents Residing in Newfoundland and Labrador or Outside the Province at Time of Survey 2000-2001
(n=2036)**

	Newfoundland & Labrador		Outside the Province	
	#	%	#	%
Memorial Undergraduate	276	60	182	40
Memorial Masters	119	83	25	17
Public College 1 Year	365	68	171	32
Public College 2-3 Year	206	62	126	38
Private College 1 Year	324	87	47	13
Private College 2 Year	167	86	28	14
Total	1457	72	579	28