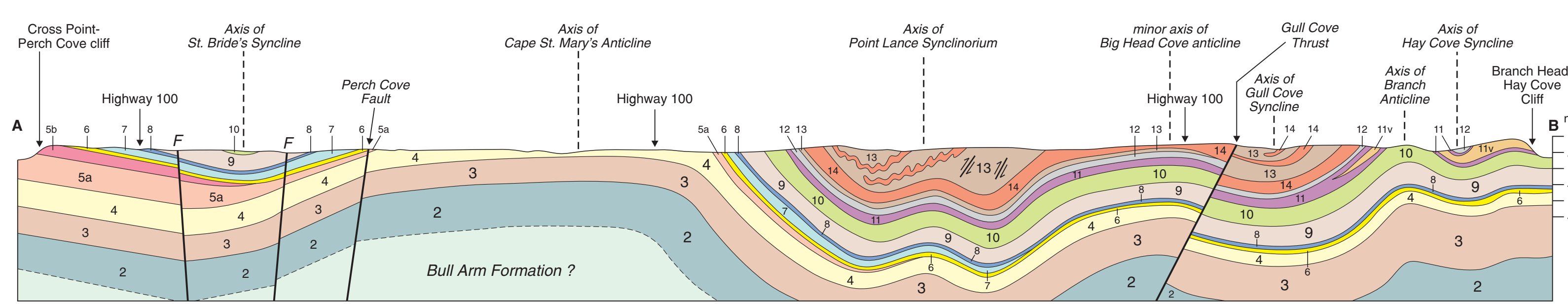


DIAGRAMMATIC CROSS SECTION OF THE BEDROCK GEOLOGY BETWEEN THE CROSS POINT-PERCH COVE CLIFF AND THE BRANCH HEAD-HAY COVE CLIFF



Geological survey by Terence P. Fletcher (University of Cambridge) at 1:50 000 scale in 1968; and minor amendments up to 2004.

Author's Address:
Dr. Terence Patrick Fletcher
Bowmont Cottage
East Links Road
Dunbar,
East Lothian
Scotland
EH42 1LT

MAP 2006-02

**BEDROCK GEOLOGY OF THE CAPE ST. MARY'S PENINSULA,
SOUTHWEST AVALON PENINSULA, NEWFOUNDLAND
(includes parts of NTS map sheets 1M/1, 1N/4, 1L/16 and 1K/13)**

Open File NFLD/2925

Scale 1:50 000

