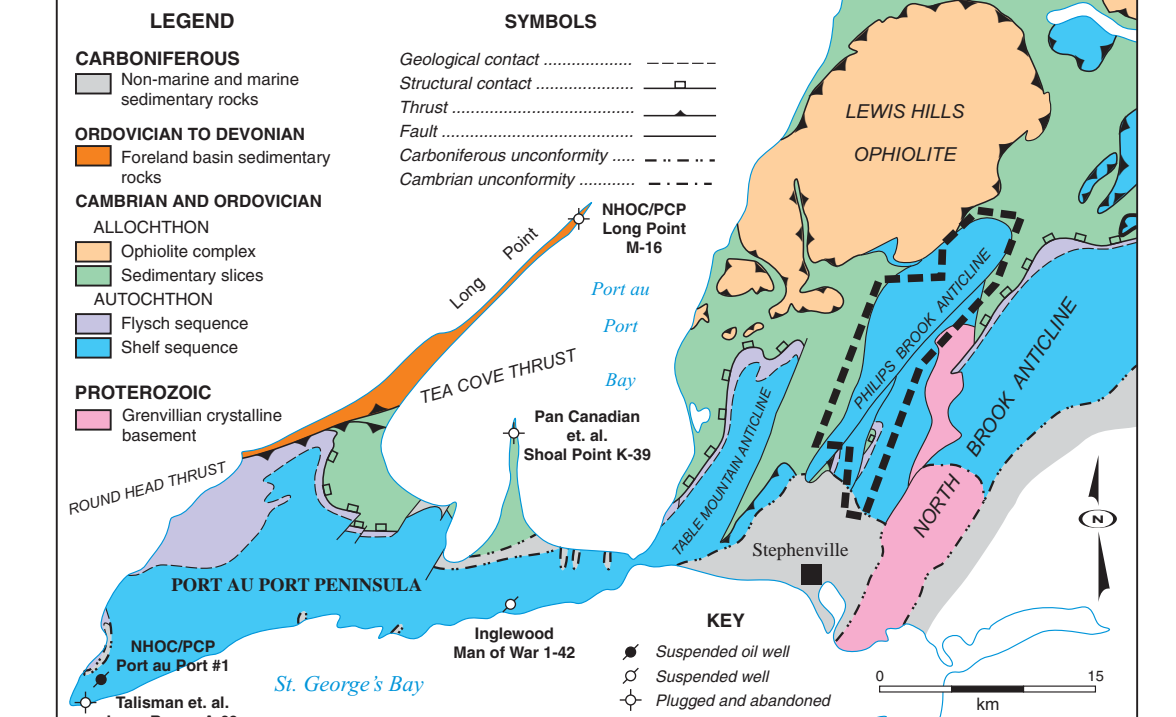


- LEGEND**
- CARBONIFEROUS**  
**CODROY GROUP**  
 20 Undivided grey carbonate-pebble conglomerate; red pebbly sandstone, red siltstone and calciche
- CAMBRIAN AND ORDOVICIAN**  
**HUMBER ARM ALLOCHTHON**  
 15 Lewis Hills ophiolite
- COW HEAD GROUP**  
 18 Green Point Formation: Green, black and grey shales, thin-bedded carbonate, siltstone, commonly broken formation
- AUTOCHTHON**  
**MIDDLE ORDOVICIAN**  
**GOOSE TICKLE GROUP**  
 17 American Tickle Formation: Grey shale, thin-bedded grey sandstone, minor shale-clast conglomerate  
 18 Daniel's Harbour Member: Limestone conglomerate; may include Black Cove Member shale  
 15 Undivided Black Cove Formation (Goose Tickle Group)-Table Cove Formation (Table Head Group): Dark grey graphitic shale overlying interbedded grey shale and thin-bedded and stylo-bedded fossiliferous limestone
- TABLE HEAD GROUP**  
 14 Table Point Formation: Bioturbated, stylo-nodular and thin-bedded, dark-grey, fossiliferous limestone, cross-bedded grainstone, upper part of unit commonly brecciated;  
 13 Spring Inlet Member: Fenestral, laminated, peloidal, light-grey limestone interbedded with grey grainstone and stylo-nodular limestone, minor dolostone
- LOWER TO MIDDLE ORDOVICIAN**  
**ST. GEORGE GROUP**  
 12 Agassiz Formation: Interbedded dolostone and bioturbated, grey and light-grey dolomitic limestone, light-grey stromatolitic limestone, green-grey shale, off-white peloidal limestone at base, chert  
 11 Costa Bay Member (Catoche Formation): Off-white peloidal limestone, minor dolostone  
 10 Catoche Formation: Bioturbated, stylo-nodular/lumpy, fossiliferous, grey, dolomitic limestone, intraclastic grainstone and rudstone, thick units (10a) of thrombolitic boundstone mounds, chert  
 9 Boat Harbour Formation: Intercalated bioturbated, thrombolitic, stromatolitic and laminated, dark-grey, dolomitic limestone and laminated and bioturbated dolostone; a basal member of dominantly massive dolostone and local matrix breccia  
 8 Walls Blight Formation: Dark-grey, bioturbated and thrombolitic, cherty, dolomitic limestone commonly replaced by finely-crystalline, tan-grey, mottled dolostone, dololaminite
- MIDDLE TO UPPER CAMBRIAN**  
**PORT AU PORT GROUP**  
 7 Berry Head Formation: Upper member of intercalated bioturbated, grainy, stromatolitic and laminated limestone with burrowed, massive, stromatolitic and laminated dolostone, middle member of bedded dolostone, basal member of stromatolitic and thrombolitic, cherty, dark-grey dolostone  
 6 Pettit Formation  
 5 Upper member of bedded stromatolitic, massive and laminated, grey and light-grey dolostone  
 5 Undivided March Point/Pettit Formation: Argillaceous and dolomitic blue-grey ribbon limestone, grey ribbon and stylo-nodular limestone, shale and intraformational conglomerate intercalated with stromatolitic grey limestone, oolitic and intraclastic grainstone—rudstone, laminated limestone, dololaminite, sandy dolostone
- LOWER TO MIDDLE CAMBRIAN**  
**LABRADORE GROUP**  
 Hawke Bay Formation  
 4b Upper member of off-white, pink, green and red, fine-grained quartz arenite, bioturbated, phosphatic and glauconitic sandstone—siltstone, minor grey shale  
 4a Lower member of interbedded bioturbated, very fine-grained sandstone—siltstone and grey shale, fossiliferous, calcareous thin beds and nodules  
 3 Forteau Formation: Undivided grey shale and laminated and cross-laminated siltstone, fossiliferous, limestone nodules; basal red to brown, nodular, argillaceous, fossiliferous limestone (Devil's Cove Member)  
 2 Bradore Formation: Cross-bedded, red, small pebble conglomerate and pebbly sandstone, quartz arenite, minor siltstone, some bioturbation
- PROTEOZOIC**  
 1 Grenvillian crystalline basement: Pink granite, granodiorite, foliated granite, granitic gneiss, amphibolite

- SYMBOLS**
- Structural base of allochthon .....  
 Thrust (beath on hangingwall) .....  
 Fault (dip shown) .....  
 Strike and dip, (bedding tops known, unknown, overturned, vertical) .....  
 Cleavage (inclined, vertical) .....  
 Scaly cleavage (bedding parallel shear) .....  
 Anticlinal fold axis .....  
 Synclinal fold axis .....  
 Minor fold, plunge arrow, recumbent fold .....  
 Lineation, plunge arrow .....  
 Fossil locality .....  
 Outcrop, broken outcrop .....  
 Mineral showing, pyrrhite, grs-gilene, bt-pyrrhotite, hem-haematite, x py, gn, bt, hem .....  
 Carboniferous unconformity .....  
 Cambrian and Ordovician unconformity/discontinuity .....  
 Elevations in metres in 12B/16 and in feet in 12B/9 and 10 .....

Note: Where there is more than one symbol at a location, one is placed at the location and the others are offset, based on the hierarchical order: 1) bedding, 2) cleavage, and 3) fold axis (e.g., bedding on outcrop location, cleavage offset, fossil offset, and lineation offset).



Map 2000-12  
 Open File 012B/0434  
**GEOLOGICAL MAP OF PARTS OF  
 HARRYS RIVER (12B/9), STEPHENVILLE (12B/10)  
 AND GEORGES LAKE (12B/16) MAP AREAS**

