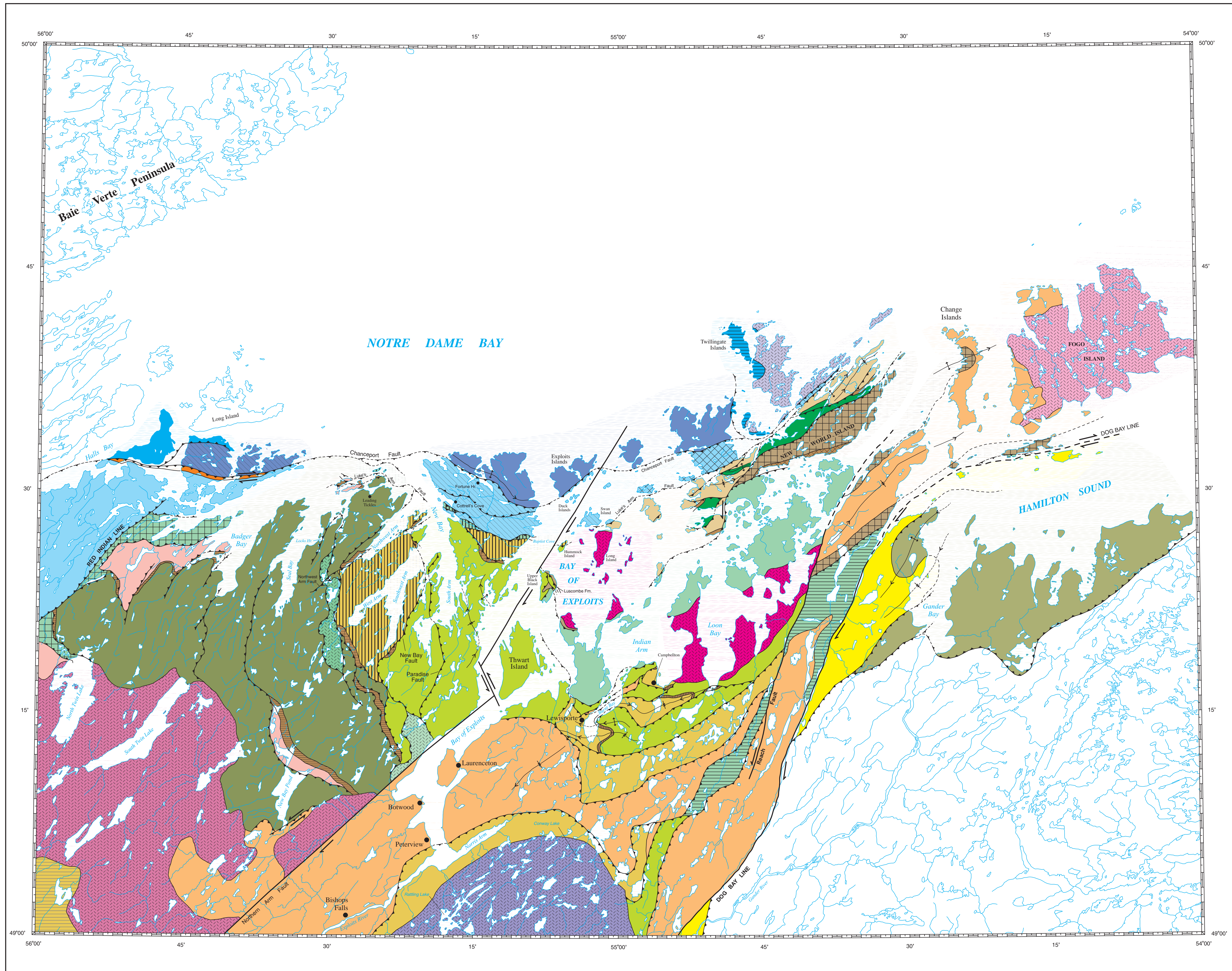
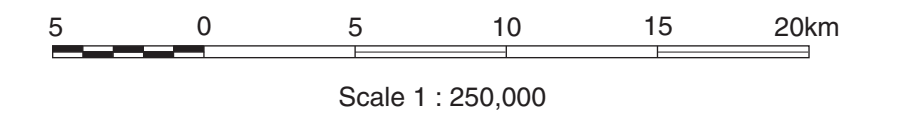




**Simplified Geological Map
of the Northeast Dunnage Zone
between Halls Bay and Hamilton Sound**

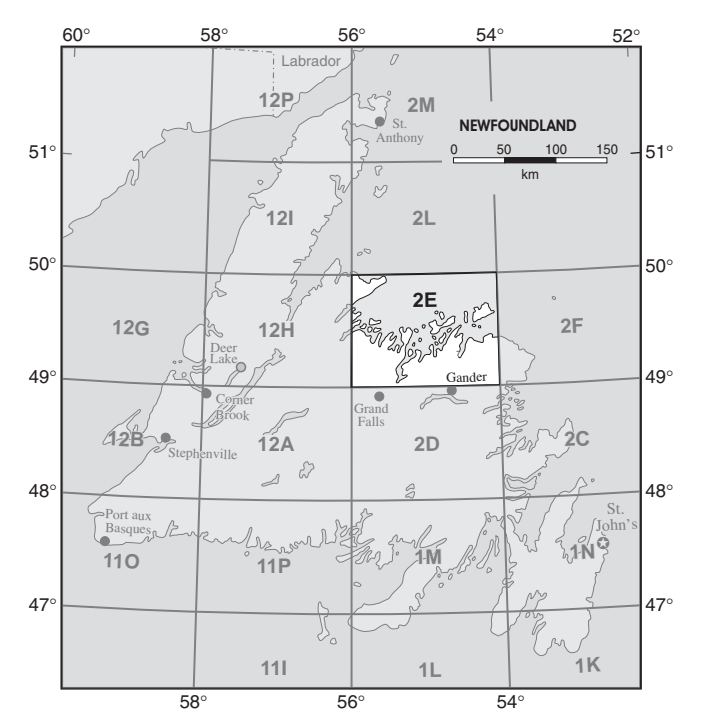
Map 2001 - 41
B.H. O'Brien
compiler



- | | |
|--|--|
| Early Devonian | Middle Ordovician or Younger |
| Loon Bay Batholith | Sops Head Complex |
| Siluro - Devonian | Boones Point Complex |
| Fogo Batholith | Dunnage Melange |
| Early and Late Silurian | Duder Complex |
| Mount Peyton Batholith | Middle Ordovician and Older |
| Silurian and Ordovician | Phillips Head Igneous Complex |
| Hodges Hill Batholith | Hamilton Sound Group |
| EXPLOITS SUBZONE
(South of Red Indian Line) | Exploits Group |
| Early - Late Silurian | Wild Bight Group |
| Botwood Group : west of Dog Bay Line | South Lake Igneous Complex |
| Indian Islands Group : east of Dog Bay Line | Summerford Group |
| Late Ordovician - Early Silurian | NOTRE DAME SUBZONE
(North of Red Indian Line) |
| Point Leamington Greywacke | Early Silurian |
| Point Leamington Formation | Springdale Group |
| Campbellton Greywacke | Early - Middle Ordovician |
| Upper Black Island Greywacke | Chanceport Group |
| Milliners Arm Formation | Roberts Arm Group |
| Gull Island Formation | Cottrells Cove Group |
| Sansom Greywacke | Cutwell Group |
| Middle - Late Ordovician | Cambrian or Ordovician ? |
| Shoal Arm Formation | Moretons Harbour Group |
| Lawrence Harbour Formation | Cambrian |
| Luscombe Formation | Twillingate Trondjemite |
| Rogers Cove Formation | Sleepy Cove Group |
| Dark Hole Formation | Lushs Bight Group |

- Stratigraphical boundary or intrusive contact.....
- Anticline (with plunge direction indicated).....
- Syncline (with plunge direction indicated).....
- Thrust or reverse fault (barbs drawn on hanging wall; relative age unspecified).....
- Strike - slip component of fault movement (dextral, sinistral; relative age unspecified).....

Note: Compiled from sources shown on Figure 2 of this report.



INDEX MAP