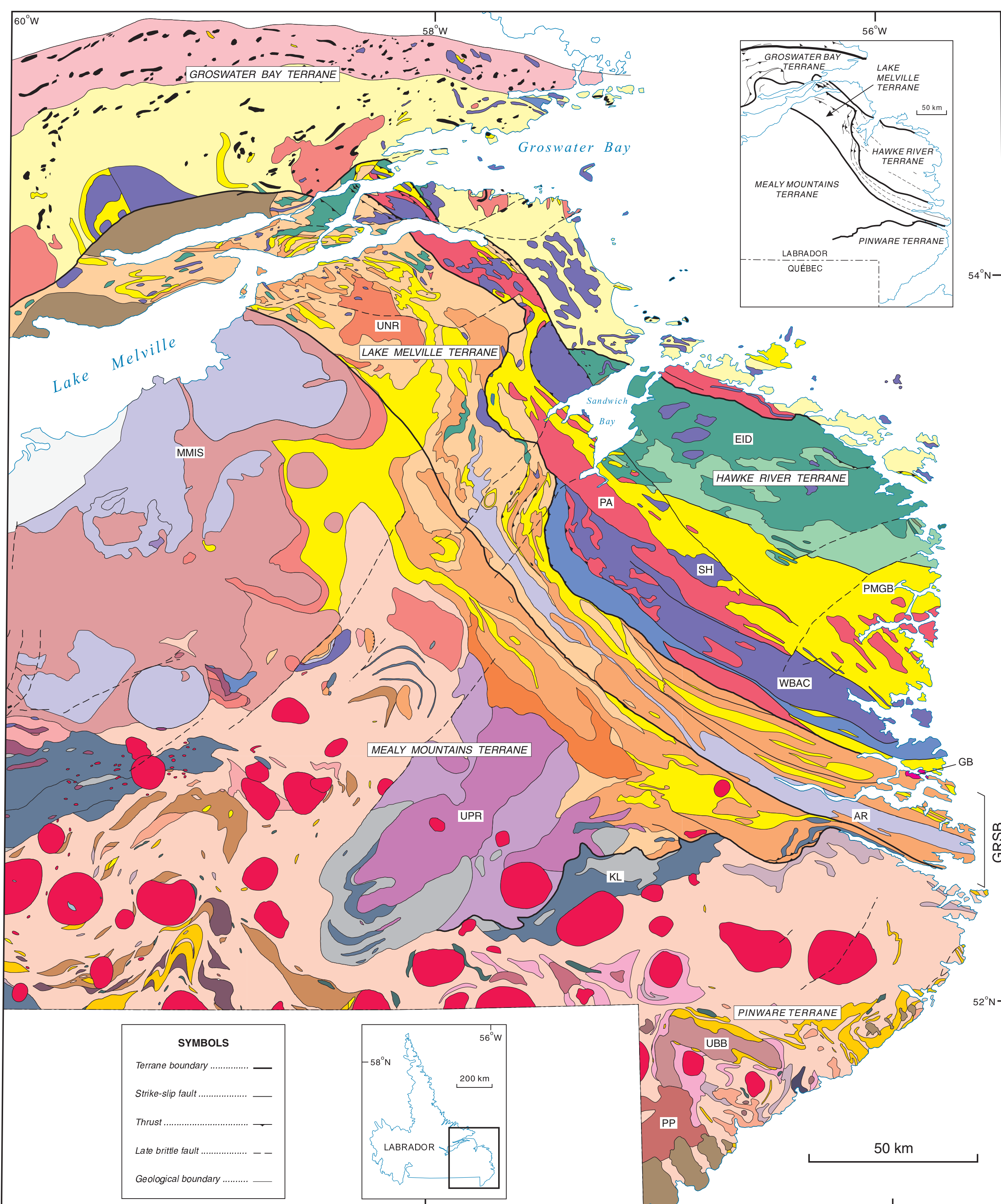


# GEOLOGICAL MAP OF THE GRENVILLE PROVINCE IN EASTERN LABRADOR



## KEY

AR - Alexis River anorthosite; EID - Earl Island domain; GB - Gilbert Bay pluton; GRSB - Gilbert River shear belt; KL - Kyfanan Lake layered mafic intrusion; MMIS - Mealy Mountains Intrusive Suite; PA - Paradise Arm pluton; PMGB - Paradise metasedimentary gneiss belt; PP - Picton Pond pluton; SH - Sand Hill Big Pond gabbro; UBB - Upper Beaver Brook pluton; UNR - Upper North River pluton; UPR - Upper Paradise River pluton; WBAC - White Bear Arm complex.

Compiled by C. F. Gower. Information is based mostly on 1:100,000-scale mapping by C. F. Gower and T. van Niekerk. Other contributors acknowledged on individual 1:100,000-scale published maps or reports. Note: this map is intended as a graphic rather than a formal cartographic product and is not exact. Users are advised to work from previously published material.

Recommended citation: Gower, C. F., 2003. Geological map of the Grenville Province in eastern Labrador, Newfoundland and Labrador. Department of Mines and Energy, Geological Survey, Map 2003-11, Open File LAB/1379.



MAP 2003-11  
Open File LAB/1379  
(This map supercedes Map 95-15, Open File LAB/1109)

## NEOPROTEROZOIC

Bradore, Lighthouse Cove, Forteau and Double Mer formations (ca. 600 Ma and younger)

## MESOPROTEROZOIC

### LATE- TO POST-GRENVILLIAN

Granite, syenite, monzonite (975-955 Ma)  
Gabbro-gabbroite (985-975 Ma)  
Picton Pond monzonite to granite (990-980 Ma)  
Upper Beaver Brook monzonite (990-980 Ma)

### GRENVILLIAN

Aegerine- or nepheline-bearing syenite (1020-985 Ma)  
Kfs megacrystic granitoid rocks (1050-1020 Ma)

### ELSONIAN, ADIRONDIAN

Quartz alkali-feldspar syenite to granite (1130 Ma)  
Quartz syenite to granite (1300 Ma)  
Mafic intrusions (pre- and post-Pinwarian)  
Mafic intrusions (Michael Gabbro - 1426 Ma)

### PINWARIAN

Syenite to granite (1500 Ma?)  
Monzonite (1500 Ma)  
Anorthosite to leucogabbroite (1500 Ma?)  
Gabbroite to ultramafite (1500 Ma?)

### MESO- OR PALEOPROTEROZOIC

#### PINWARIAN OR LABRADORIAN

Granite, alkali-feldspar granite (ca. 1650 and 1500 Ma?)  
Kfs megacrystic granitoid rocks (ca. 1650 and 1500 Ma?)  
Syenite to quartz syenite (1650 and 1500 Ma?)  
Diorite to quartz monzonite (1650 and 1500 Ma?)  
Felsic volcanic and sedimentary rocks (1650-1500 Ma)  
Granodioritic/tonalitic gneiss; metasedimentary, in part (1650-1500 Ma?)

### PALEOPROTEROZOIC

#### LATE- AND POST-LABRADORIAN

Granite (1630-1610 Ma?)  
Granite and Kfs megacrystic granite (1645-1635 Ma)  
Monzonite, Kfs megacrystic monzonite (1645-1635 Ma)  
Gabbroite, anorthosite (1650-1630 Ma)  
Amphibolitized gabbroite (1650-1630 Ma)  
Anorthosite, leuconorite (ca. 1650-1630 Ma?)  
Trans-Labrador batholith (1654-1646 Ma)

#### PRE- AND EARLY LABRADORIAN

Quartz diorite to granodiorite (1675-1665 Ma)  
Diorite to quartz diorite (1675-1665 Ma)  
Kfs megacrystic granitoid rocks (1680-1670 Ma)  
Granodiorite to quartz diorite (1680-1670 Ma?)  
Granite and granitic gneiss (1680-1670 Ma?)  
Granodioritic gneiss (pre-1665 Ma)  
Metasedimentary gneiss (pre-1665 Ma)

#### PRE-LABRADORIAN

Granitic and granodioritic gneiss (including 1780, 1670 and 1500 Ma ages)

## NOTE:

The purchaser agrees not to provide a digital reproduction or copy of this product to a third party. Derivative products must acknowledge the source of the data.

## DISCLAIMER:

The Geological Survey, a division of the Department of Mines and Energy (the "authors and publishers"), retains the sole right to the original data and information used in any product produced. The authors and publishers assume no legal liability or responsibility for any alterations, changes or misrepresentations made by third parties with respect to these products or the original data. Furthermore, the Geological Survey assumes no liability with respect to digital reproductions or copies of original products or for derivative products made by third parties. Please consult with the Geological Survey in order to ensure originality and correctness of data and/or products.